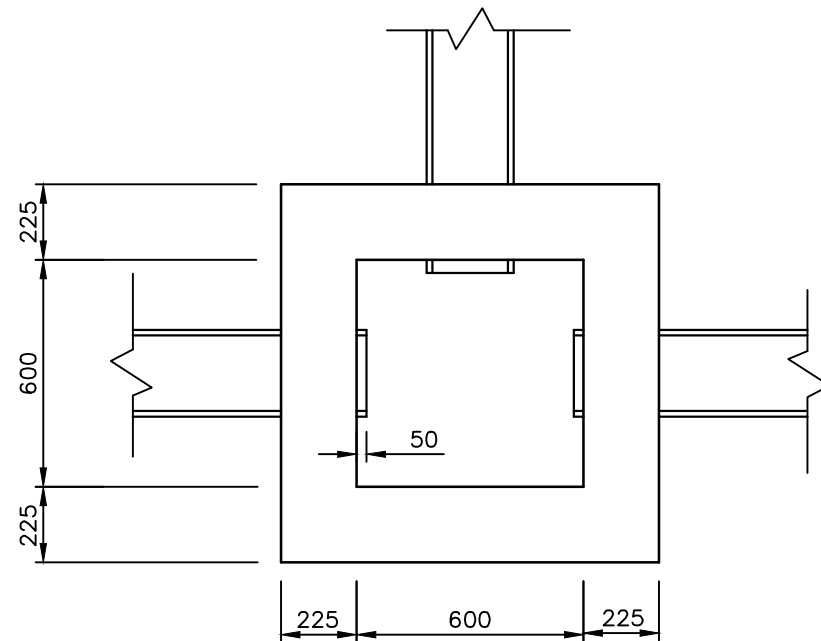


TYPICAL SECTION



TYPICAL PLAN
GRATING AND CONCRETE BACKFILL
OMITTED FOR CLARITY

NOTES:

1. ALL DIMENSIONS ARE IN MILLIMETRES.
2. THE CHAMBER SHALL BE CONSTRUCTED OF HIGH DENSITY TYPE CLASS B SOLID CLAY ENGINEERING BRICKS TO BS EN 771-1 AND CLAUSE 2406 LAID ON CLASS (i) MORTAR TO CLAUSE 2404 IN ENGLISH BOND. IF THE CHAMBER IS TO BE TRAFFICKED WITHIN 48 HOURS OF BRICKWORK CONSTRUCTION, A RAPID HARDENING CEMENTITIOUS MORTAR SHALL BE USED.
3. A STUB PIPE SHALL BE PROVIDED FOR EACH PIPE CONNECTING TO THE CHAMBER OF SUFFICIENT LENGTH TO ENABLE THE NEXT PIPE TO BE JOINTED AND NOT BE RESTRICTED BY CONCRETE BACKFILL.
4. ALL CEMENT USED IN INSITU CONCRETE SHALL BE CII(A OR B)-S OR CIII A OR B TO BS 8500-2, TABLE 1 AND ANNEX A.

REV	AMENDMENTS	DATE	CAD	CHKD	APPD

CONSULTANT

Hampshire County Council **Engineering**

STUART JARVIS BSc DipTP FCIHT MRTPI: DIRECTOR OF ECONOMY, TRANSPORT & ENVIRONMENT

SCHEME

STANDARD DETAILS

DRAWING TITLE

COMBINED CATCHPIT/GULLY
TYPE CCG - BRICK

HCC CADplot: 24.Mar.2020 at 8:46am

DRAWN	RB	CHECKED	JPR	SCALE @ A3	N.T.S
CAD	RB	APPROVED	CDP	DATE	March 2020
DRG No.	HCC11/D/030			REVISION	

Copyright Hampshire County Council. 2019

All rights, including translation, reserved. No part of this publication may be reproduced, stored in a retrieval system, or transmitted in any form or by any means (electronic, mechanical, photocopied, recorded or otherwise) without the prior written permission of Hampshire County Council. Requests should be directed to the Economy, Transport & Environment Department.

Use only in conjunction with the Standard Details (Scheme) as indicated. Dec 2011\HCC11 2020 STANDARD DETAILS.Dwg Serial D 030.dwg