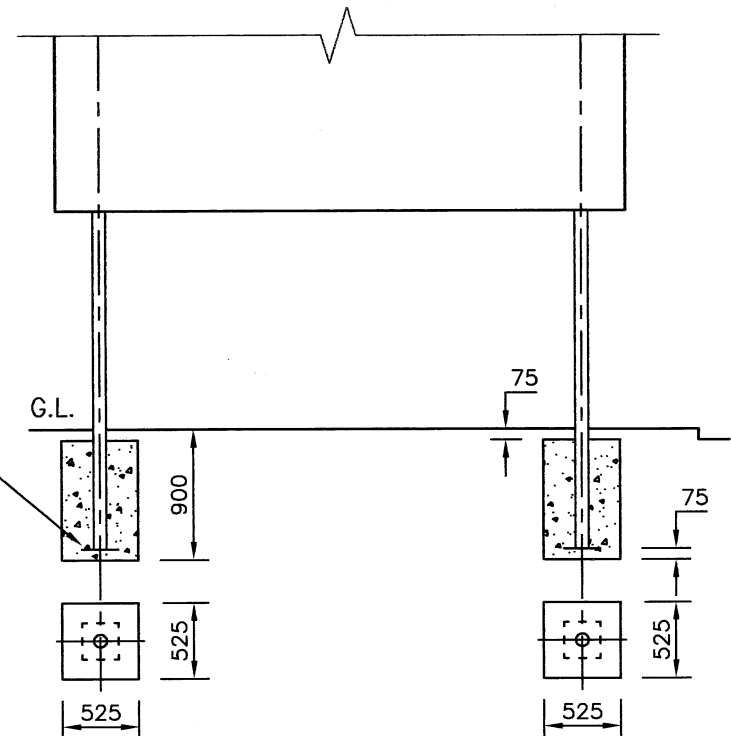


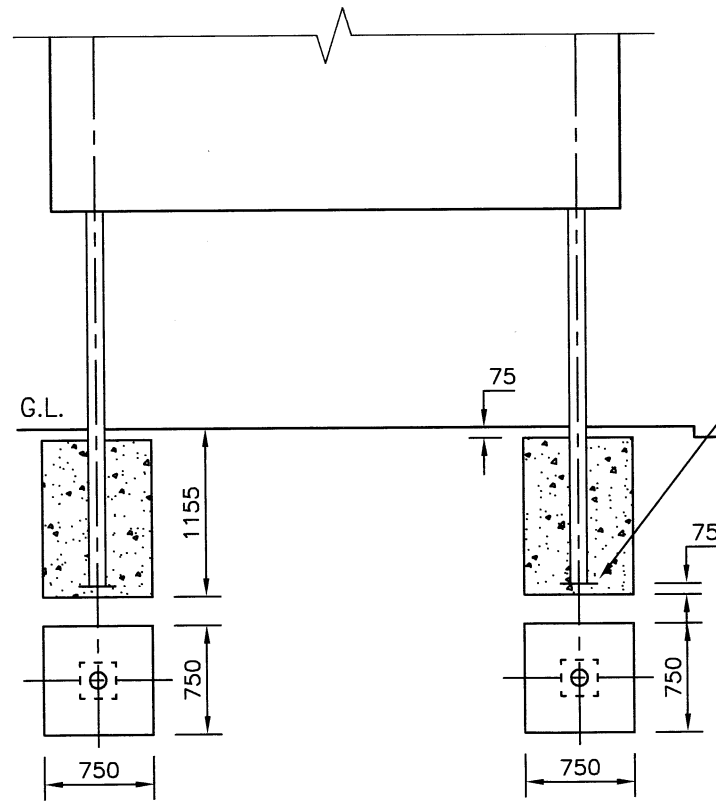
FOUNDATION TYPE A

POST SIZE 76.1 O.D. x 3.2 C.H.S.



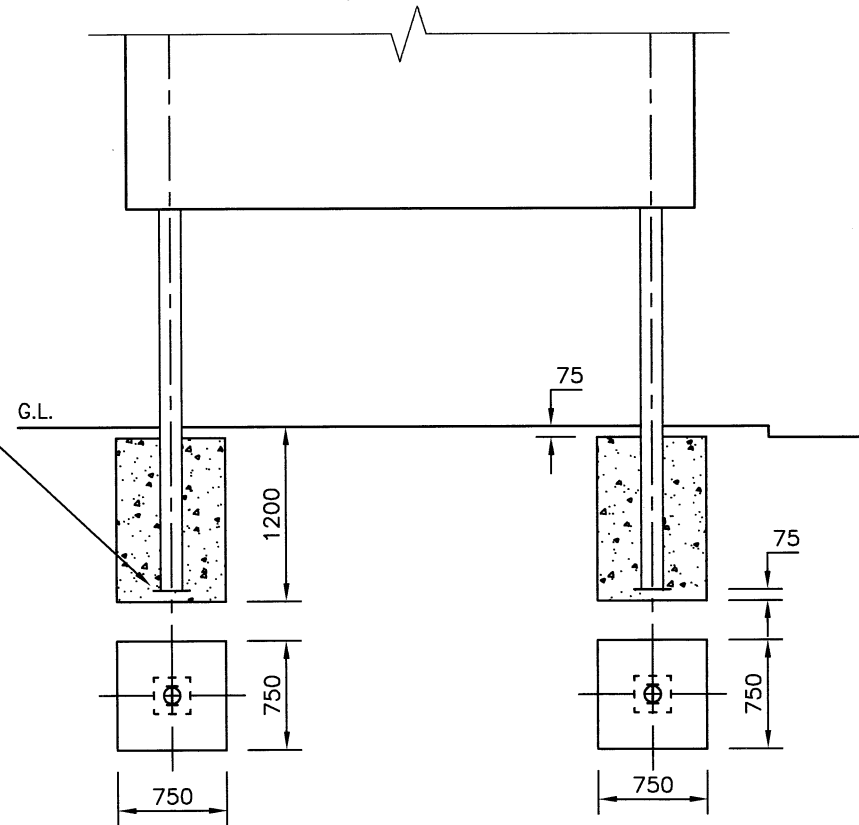
FOUNDATION TYPE B

POST SIZE 88.9 O.D. x 3.2 C.H.S.
(SEE NOTE 8)



FOUNDATION TYPE C

POST SIZE 114.3 O.D. x 5.0 C.H.S.
(SEE NOTE 8)



FOUNDATION TYPE D

POST SIZE 139.7 O.D. x 5.0 C.H.S.
(SEE NOTE 8)

BASE PLATES
(SEE NOTE 5)

BASE PLATES
(SEE NOTE 5)

NOTES:

1. ALL DIMENSIONS ARE IN MILLIMETRES.
2. FOUNDATIONS SHALL BE IN ACCORDANCE WITH CLAUSE 1203.
3. CONCRETE FOR SIGN FOUNDATIONS SHALL BE MIX ST2.
4. SEE APPENDIX 12/1 AND SIGN SCHEDULES FOR INFORMATION AND DIMENSIONS RELATING TO SIGN FACES, POSTS, CLEARANCES, LIGHTING UNITS, ETC.
5. ALL POSTS SHALL BE FITTED WITH BOLTED-ON BASE PLATES AS BS EN 12899.
6. ALL POSTS SHALL BE PROVIDED WITH PLASTIC CAPS TO BS EN 12899.
7. SINGLE POST SIGNS SHALL BE MADE RESISTANT TO TWISTING AS DESCRIBED IN BS EN 12899.
8. FOR ROADS WITH A SPEED LIMIT OF 50mph OR GREATER, AND FOR SIGN POSTS WITH A DIAMETER OF OR EXCEEDING 88.9 O.D. WITH A WALL THICKNESS GREATER THAN 3.2mm, THE POSTS SHALL BE DESIGNED TO COMPLY WITH TD 89/08 (USE OF PASSIVELY SAFE SIGNPOSTS, LIGHTING COLUMNS AND TRAFFIC SIGNAL POLES TO BS EN 12767).
9. IN ORDER TO HIGHLIGHT THEIR PRESENCE TO VISUAL IMPAIRED PEDESTRIANS (SEE DfT 'INCLUSIVE MOBILITY' PARA 3.9), TRAFFIC SIGN POSTS TO BE ERRECTED IN FOOTWAY AREAS OR WITHIN 0.5m OF A FOOTWAY OR CYCLEWAY SHALL HAVE A 150 DEEP SELF ADHESIVE WHITE BAND APPLIED AT BETWEEN 1.5m AND 1.6m TO THE BOTTOM EDGE ABOVE GROUND LEVEL. THE BAND SHALL BE IN RETROREFLECTIVE MATERIAL TO BS EN 12899, CLASS 1 OR 2. THE ENDS OF THE TAPE SHALL BE SECURED TO RESIST REMOVAL.

REV	AMENDMENTS	DATE	CAD	CHKD	APPD
-	-	-	-	-	-

CONSULTANT

STUART JARVIS BSc DipTP FCIHT MRTPI DIRECTOR OF ECONOMY, TRANSPORT & ENVIRONMENT

SCHEME

STANDARD DETAILS

DRAWING TITLE

**TRAFFIC SIGN
POST FOUNDATIONS**

HCC CADplot: 16.Sep.2015 at 2:05pm		
DRAWN	CHECKED	SCALE @ A3
RB	WW <i>WW</i>	N.T.S
CAD	APPROVED	DATE
RB	CP <i>CP</i>	July 2015
DRG No.	REVISION	
HCC10/C/140	-	

Copyright Hampshire County Council. 2015

All rights, including translation, reserved. No part of this publication may be reproduced, stored in a retrieval system, or transmitted in any form or by any means (electronic, mechanical, photocopied, recorded or otherwise) without the prior written permission of Hampshire County Council. Requests should be directed to the Economy, Transport & Environment Department.

HCC CADfile: K:\Eng\Standard\AutoCAD\Standard Details (Secure) As Updated Dec 2011\2015 STANDARD DETAILS-NOT YET RELEASED\C-Series\C-140.dwg