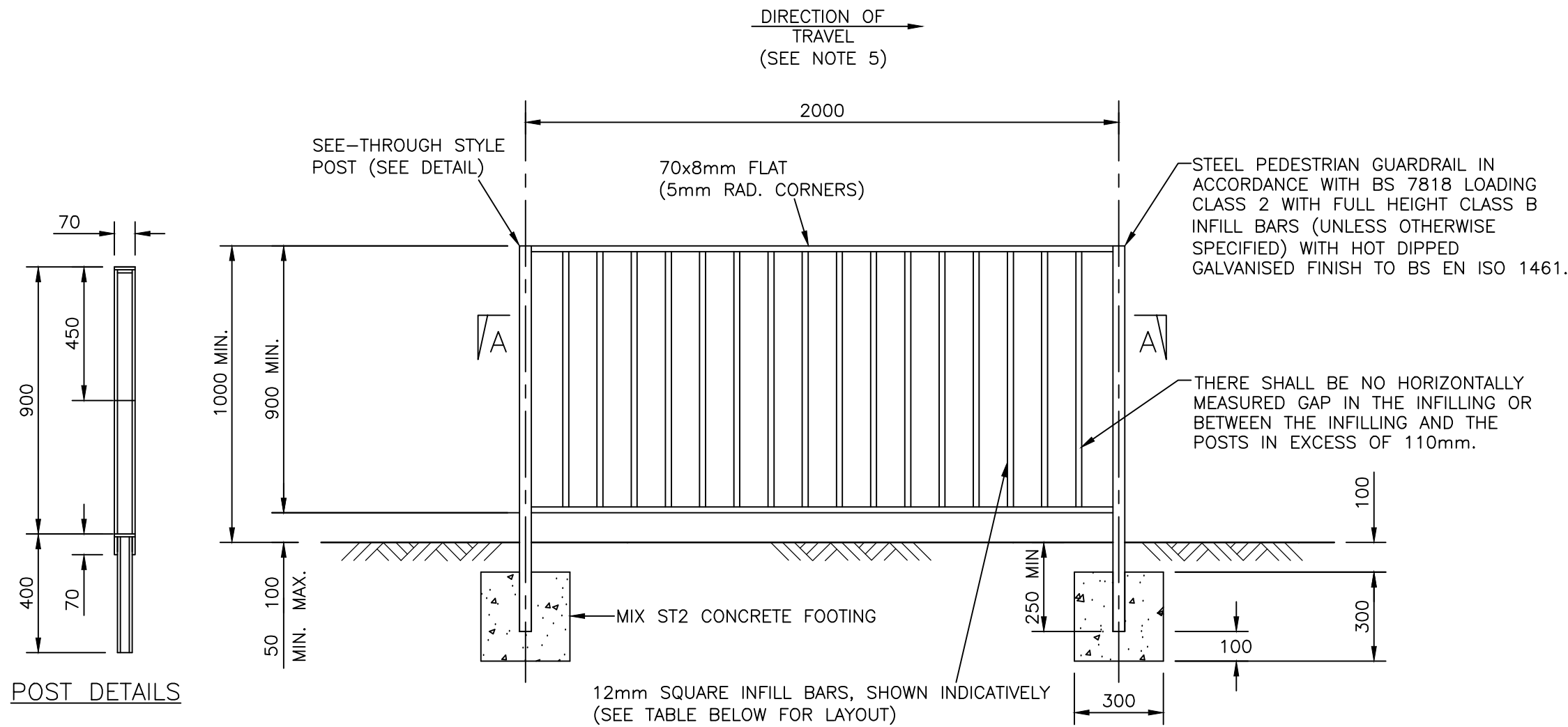


NOTES:

1. ALL DIMENSIONS ARE IN MILLIMETRES.
2. CLEARANCE BETWEEN GUARD RAIL AND EDGE OF CARRIAGEWAY SHALL BE A MINIMUM OF 450.
3. THE LOCATIONS OF PEDESTRIAN GUARDRAILS AND PANEL TYPES SHALL BE AS SHOWN ON THE LAYOUT DRAWINGS.
4. THE TYPE OF GUARDRAILING TO BE INSTALLED AT EACH LOCATION IS GIVEN IN APPENDIX 4/2.
5. THE DIRECTION OF TRAVEL REFERS TO THE DIRECTION OF VEHICULAR TRAVEL.
6. PANELS ARE TO BE SECURED TO POSTS USING M10 DOME HEAD CARRIAGE BOLT USING NYLOC NUT AND WASHER VANDAL RESISTANT CONNECTION OR EQUIVALENT.
7. FOR DETAILS OF STANDARD PEDESTRIAN GUARDRAILING SEE DRAWING HCC11/C/140.



POST DETAILS

INFILL BAR TABLE

PANEL TYPE	PANEL LAYOUT (SECTION A-A)	OPTIMUM SIGHT ANGLE	TYPICAL USES
HV1		LESS THAN 2.5°	OFFSIDE GUARD RAILS AND HIGH SPEED ROADS
HV2		2.5° TO 5°	STRAIGHT ROADS, MODERATE TO HIGH SPEEDS
HV4		5° TO 14°	STRAIGHT ROADS, LOW TO MODERATE SPEEDS. CURVES
HV8		MORE THAN 14°	CURVES LESS THAN 15m, RADIUS e.g BELLMOUTHS

Copyright Hampshire County Council. 2019

All rights, including translation, reserved. No part of this publication may be reproduced, stored in a retrieval system, or transmitted in any form or by any means (electronic, mechanical, photocopied, recorded or otherwise) without the prior written permission of Hampshire County Council. Requests should be directed to the Economy, Transport & Environment Department.

REV	AMENDMENTS	DATE	CAD	CHKD	APPD

CONSULTANT

STUART JARVIS BSc DipTP FCIHT MRTPI: DIRECTOR OF ECONOMY, TRANSPORT & ENVIRONMENT

SCHEME

STANDARD DETAILS

DRAWING TITLE

HIGH VISIBILITY PEDESTRIAN GUARD RAIL

HCC CADplot: 24.Mar.2020 at 9:41am

DRAWN	CHECKED	SCALE @ A3
RB	JPR	N.T.S
CAD	APPROVED	DATE
RB	CDP	March 2020
DRG No.	REVISION	
HCC11/C/145		

Use only for: HCC Standard AutoCAD Standard Details (Scheme) As Issued on: Dec 2011 \HCC11 2020 STANDARD DETAILS\Series\C 145.dwg