

HAMPSHIRE 2050

VISION FOR THE FUTURE

Cross cutting theme - Deprivation



Hampshire
County Council

Contents

Part I: Deprivation in Hampshire

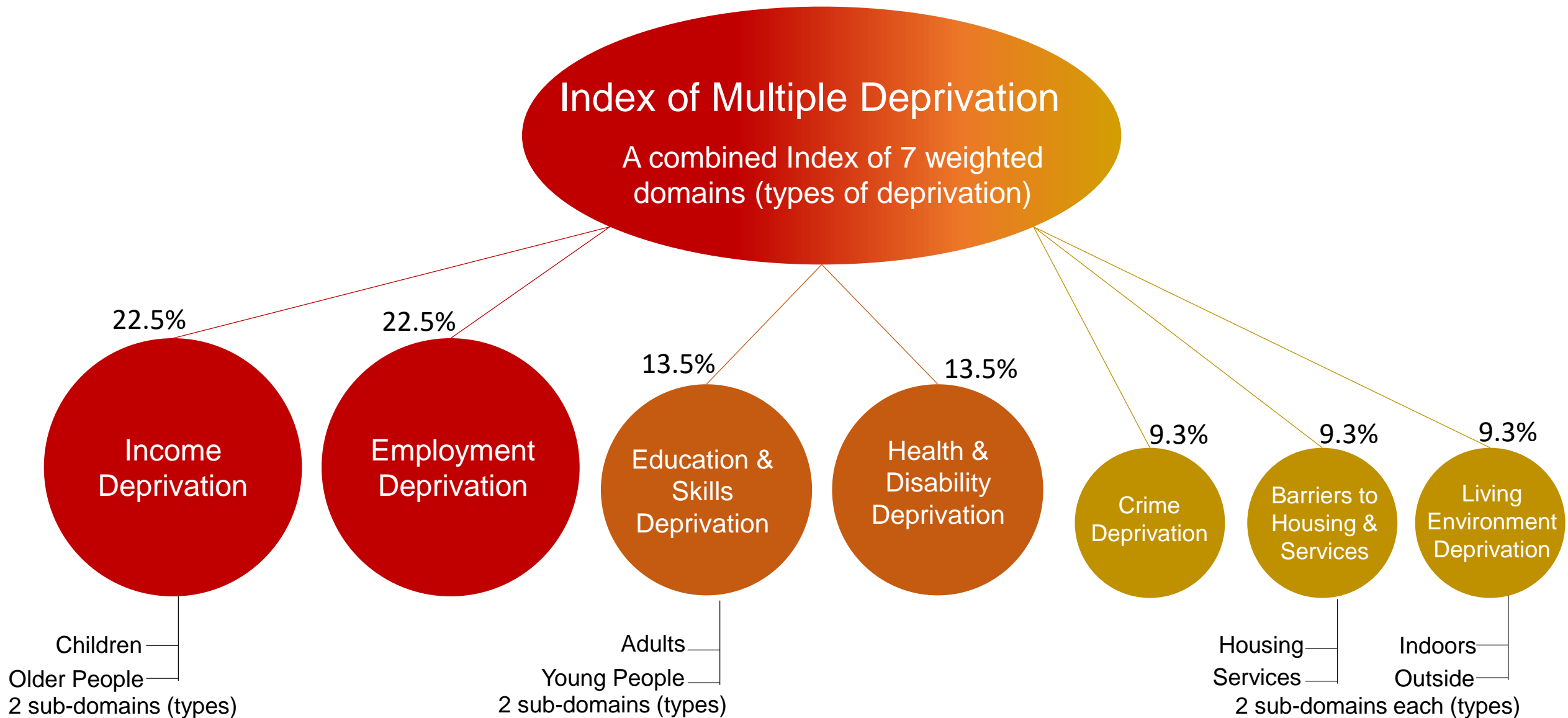
Part II: Policy challenges in addressing deprivation at local level

Part III: Case Studies

Summary

Part I: Deprivation in Hampshire

The Indices of Deprivation & the Index of Multiple Deprivation



The Index of Multiple Deprivation and How it Can be Used

IMD Can be used for:

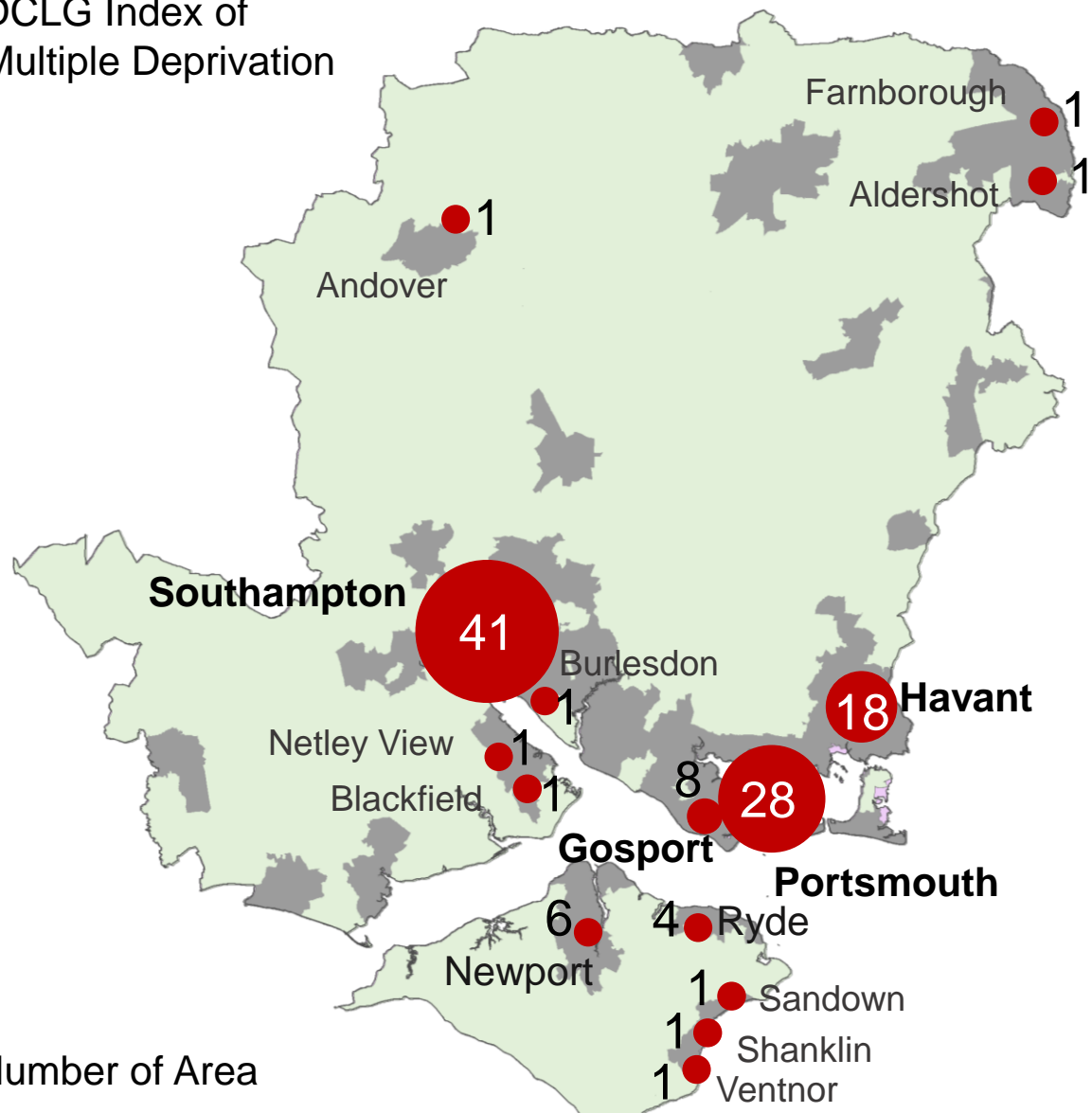
-
- ✓ Comparing small areas across England
 - ✓ Identifying the most deprived small areas
 - ✓ Exploring types of deprivation
 - ✓ Comparing larger areas e.g. local authorities
 - ✓ Looking at changes in relative deprivation

Cannot be used for:

- ✗ Quantifying how deprived a small area is
 - ✗ Identifying deprived people
 - ✗ Saying how affluent a place is
 - ✗ Comparing with small areas in other UK countries
 - ✗ Measuring real change in deprivation over time
-

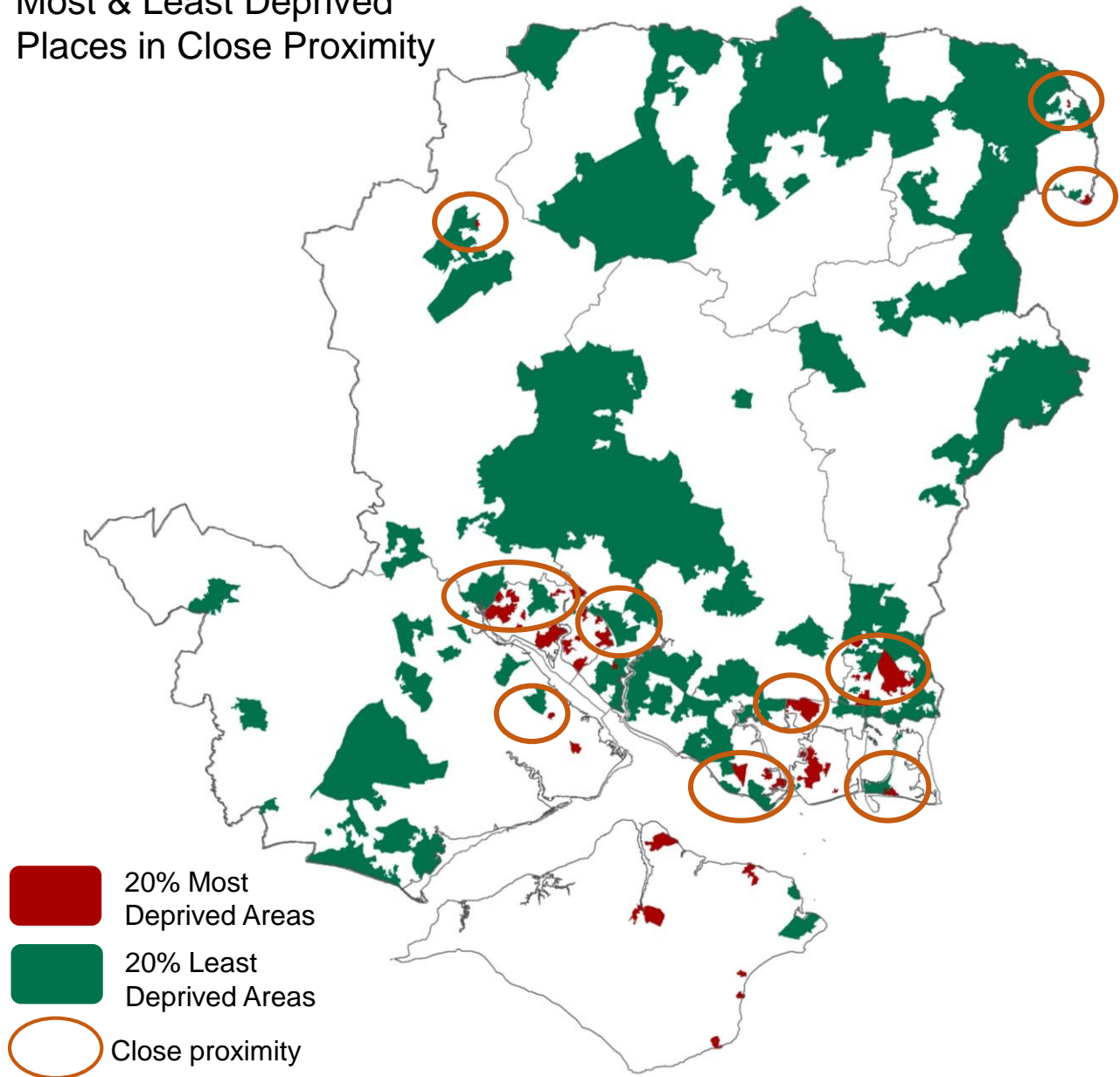
A Story of Urban Concentrations – Hidden Pockets

DCLG Index of Multiple Deprivation



Number of Area
 ● 20% most deprived Places

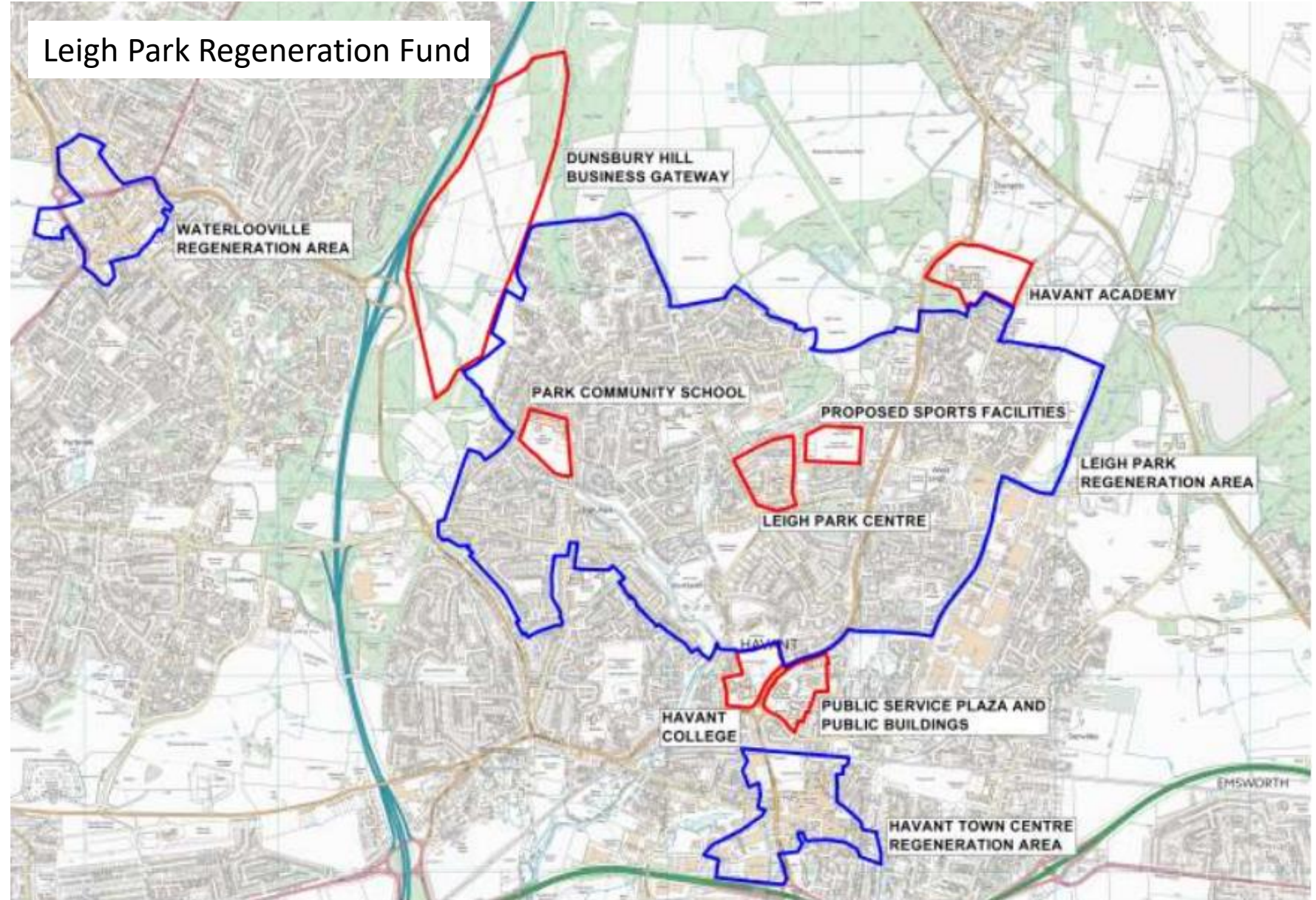
Most & Least Deprived Places in Close Proximity



■ 20% Most Deprived Areas
 ■ 20% Least Deprived Areas
 ○ Close proximity

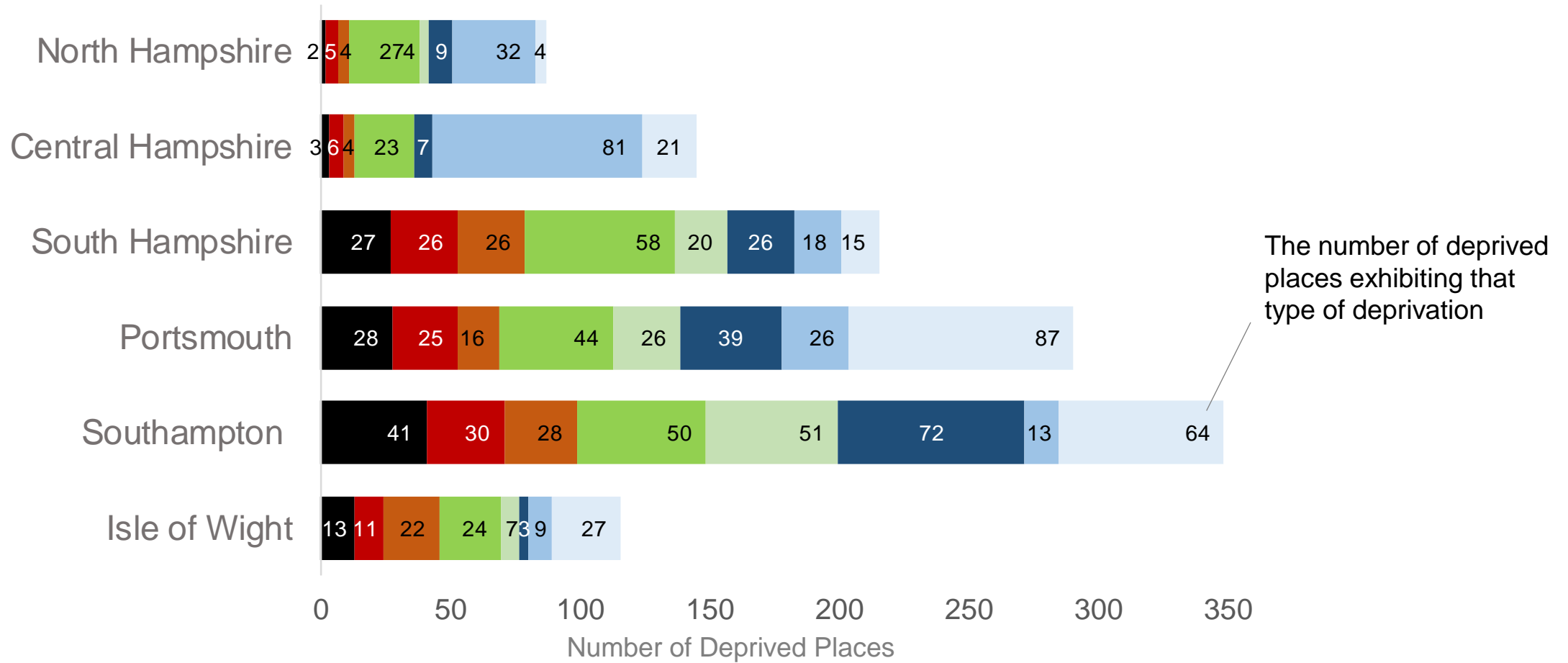
IMD in Havant and Leigh Park Estate

- Havant accounts 50% of all deprived places in Hampshire*.
- Almost 1 in 4 of all LSOAs in Havant fall within the bottom 20% in England.
- Leigh Park accounts for two thirds of place deprivation in Havant and one third of place deprivation in Hampshire.



*Hampshire County Council Area

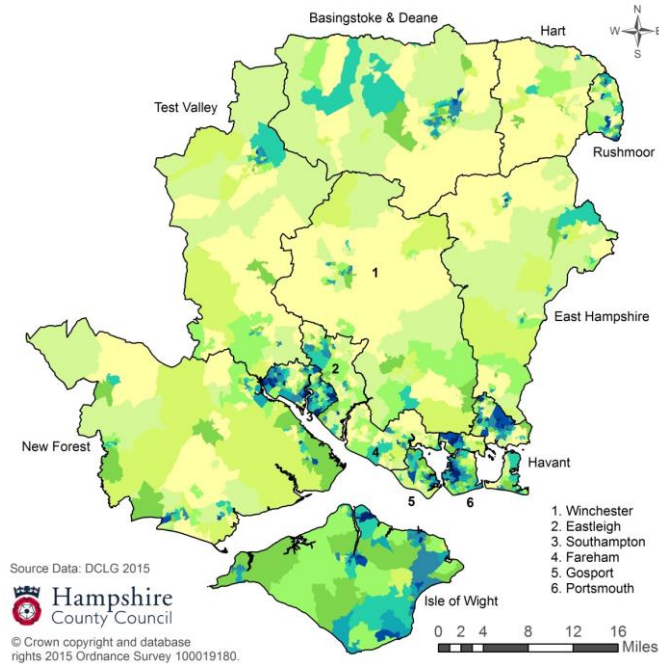
Different Deprivations → Different Distributions → Different Policy Challenges



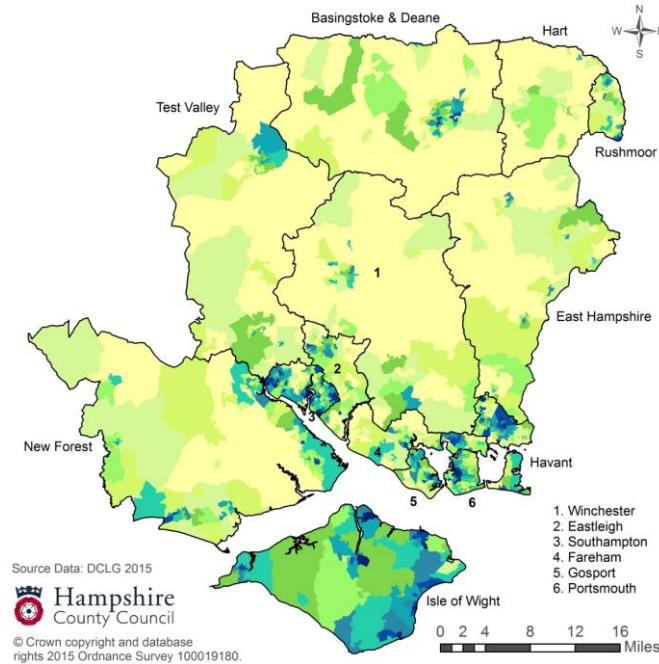
- Overall IMD
- Income (22.5%)
- Employment (22.5%)
- Education & Skills (13.5%)
- Health & Disability (13.5%)
- Crime (9.3%)
- Barriers to Housing & Services (9.3%)
- Living Environment (9.3%)

Types of Deprivation where LAs Better Placed to Intervene

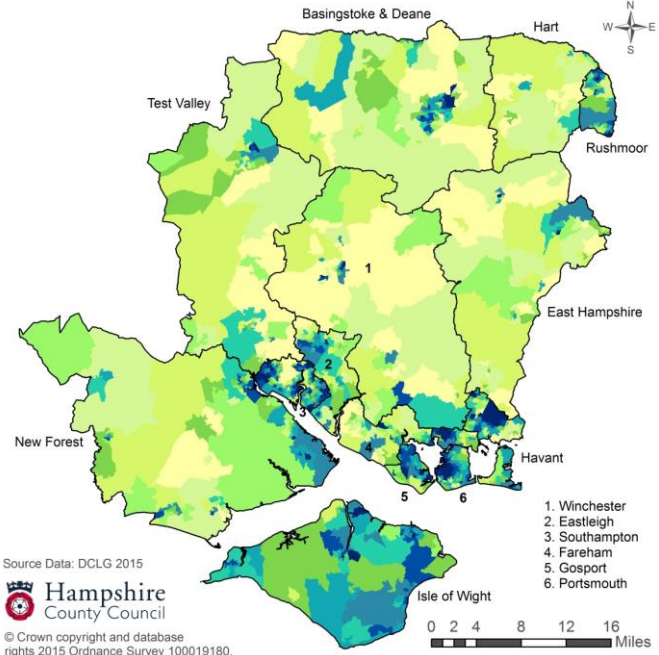
Income Deprivation



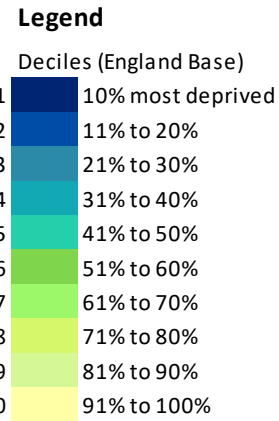
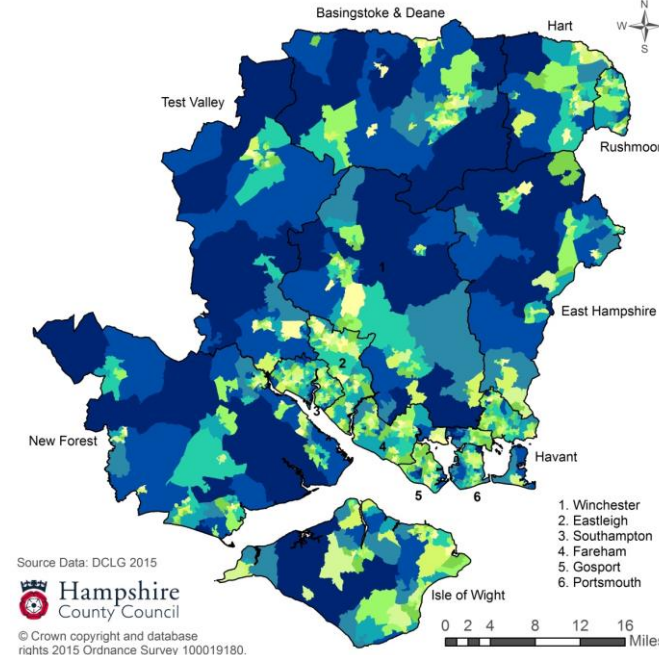
Employment Deprivation



Education & Skills Deprivation



Barriers to Housing & Services



Source Data: DCLG 2015
 Hampshire County Council
 © Crown copyright and database rights 2015 Ordnance Survey 100019180.

Source Data: DCLG 2015
 Hampshire County Council
 © Crown copyright and database rights 2015 Ordnance Survey 100019180.

Source Data: DCLG 2015
 Hampshire County Council
 © Crown copyright and database rights 2015 Ordnance Survey 100019180.

Source Data: DCLG 2015
 Hampshire County Council
 © Crown copyright and database rights 2015 Ordnance Survey 100019180.

Part II: Challenges of Tackling Deprivation at the Local Level

Policy Challenges

Often easier to Tackle Deprived Individuals over Place Deprivation



Getting engagement buy-in v stigmatising



Deprivation Policies often directed by Central Government



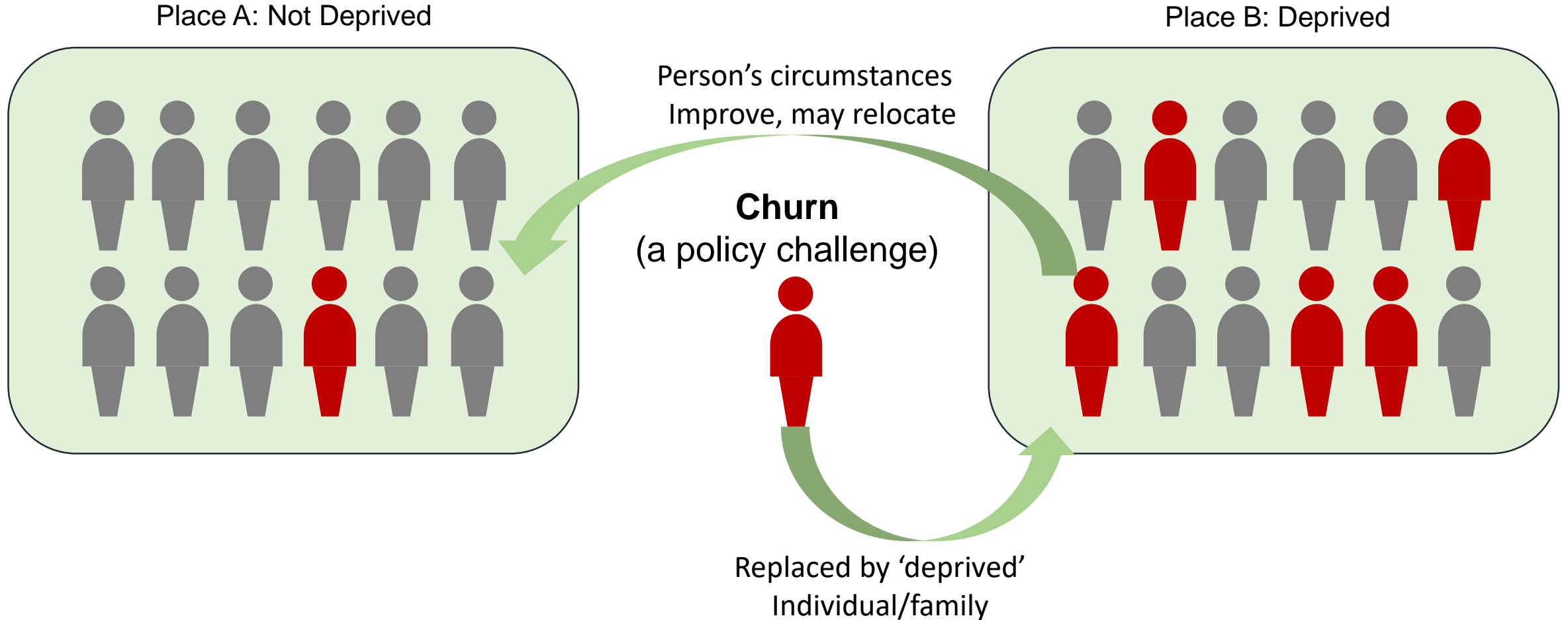
Constraints on Funding & Resources



Limited Access to National Databases, GDPR & Disclosure



Deprived Places & People: Where you Live Matters, as Well as Who you Are

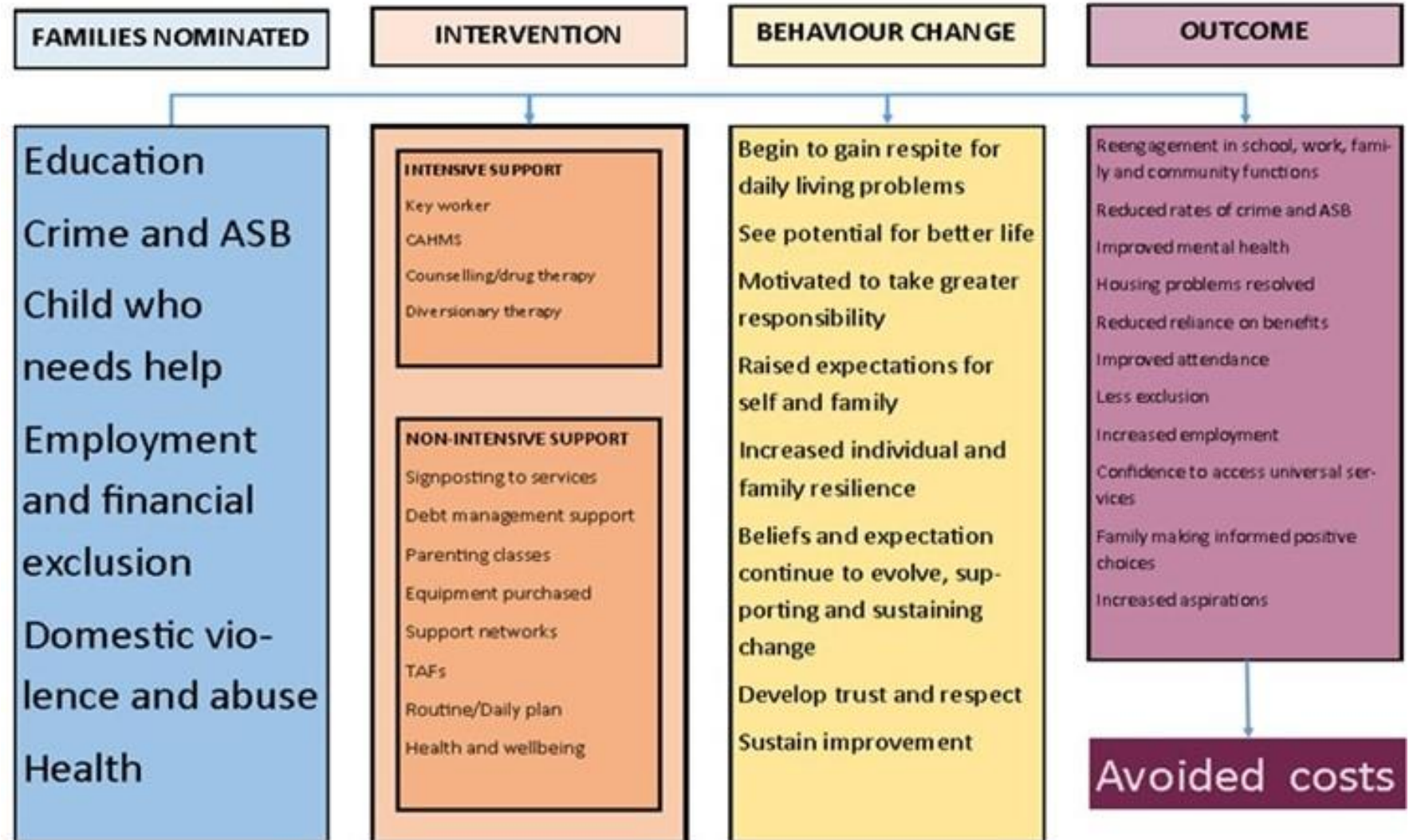


Part III: Case Studies


Supporting Families

Two Phases (STEP 1 & II):

- STEP 1 2012 and 2014/15 targeted approx 600 per annum.
- STEP 2 to 2020 targeting over a 1,000 families in 2015/16 and 2016/17.



Skills & Employment Driven Case Studies

- Construction Skills Fund (CFS)
 - Solent LEP – Centre of Excellence in Engineering & Manufacturing Advanced Skills Training (CEMAST)
 - Hampshire Careers Partnership and NCOP Funding
 - ESF Solent Traineeship Engagement and Participation (STEP) Programme
 - ESF Solent LEP & Enterprise M3 NEET Projects
 - European Social Fund (ESF) Projects - skills support for the unemployed
 - Economic Development
- 
- Sector specific

Summary

- Hampshire as a whole has low levels of deprivation, BUT has concentrated pockets across the County, but focused in a few large neighbourhoods
- Deprivation based on the IMD is good at locating relative place deprivation, but cannot identify deprived individuals – often hidden deprivation
- Although the IMD is about deprived places, most policies target individuals/families
- Hampshire County Council departments make a major contribution to easing deprivation and preventing people from falling into deprivation through its skills & education programmes which increase employability and mobility.
- Economic development work with local businesses in creating employment opportunities that can be tapped into by all residents including those from deprived areas.