

Call for projects in Hampshire seeking capital funding from the LEP legacy reserves

Annex 4 – Overview slides provided by shortlisted applicants

Hampshire Prosperity Partnership Board

9 March 2026

Agenda item 8

CONTENTS

No.	Project name	Lead applicant	Pages
2	Hampshire Fare Digital Futures Programme	Hampshire Fare	3 to 7
6	Aerospace, Defence and Security Curricula Development	ADS	8 to 12
12	Test Valley Community Construction Academy	Sparsholt College	13 to 16
13	IncuHive Farnborough	Rushmoor Borough Council	17 to 21
23	Leigh Park Skills Centre	Havant Borough Council	22 to 26
26	Bacteriophage and Biologics Manufacturing and R&D Facility	University Hospital Southampton NHS Foundation Trust	27 to 31
28	BRIDGE - Workforce and Innovation Centre	University of Winchester	32 to 36
31	Hampshire Creative Business Escalator	Hampshire Chamber of Commerce	37 to 40
37	Havant Maths and English Hub	HSDC	41 to 44
38	Faraday Connect	Fareham Borough Council	45 to 49
39	Seascape Restoration and Innovation Centre	University of Portsmouth	50 to 54
42	South of Romsey Town Centre	Test Valley Borough Council	55 to 59
44	Microbial Innovation Centre	University of Southampton	60 to 64
45	Securing the Future of the New Forest Tour	New Forest National Park Authority	65 to 69
47	Alton Adult Learning Hub	HSDC	70 to 74
48	Tech+Tour Hampshire Rollout	South Hampshire College Group	75 to 79





Hampshire Fare CIC

Strengthening Hampshire & the IOW's Food, Drink and Craft Economy

Our Mission:

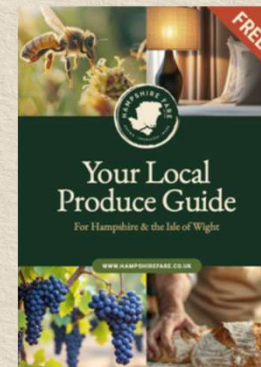
To champion, support and promote local food, drink and craft producers in Hampshire and the Isle of Wight.

Purpose:

To transform the digital infrastructure to support productivity, digital capability, and consumer engagement across our county.

End Result:

To make Hampshire & the Isle of Wight the **No.1 Food & Drink Destination** in the UK.





The Need & Strategic Alignment

Challenges Faced by Members:

- Limited digital marketing capability, especially rural SMEs
- Heavy manual admin for producers + HF staff
- Systems not fully integrated or scalable

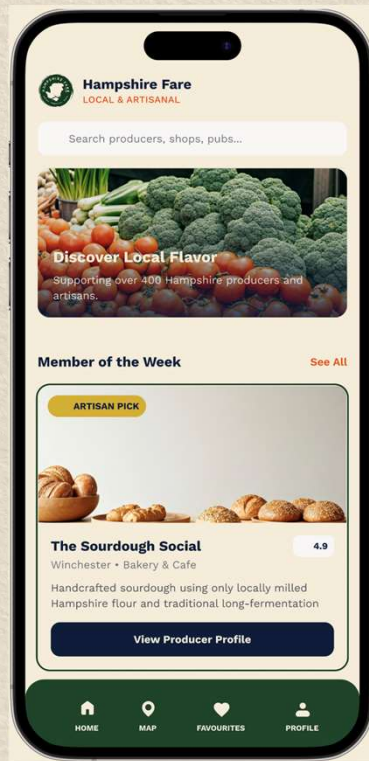
Why It Matters:

- Supports **350+ SMEs**
- Aligns directly with:
 - **Hampshire Economic Strategy 2025 - 2027**
 - **Economy & Growth Plan**
 - **UK Industrial Strategy (IS-8 Digital & Technology)**





What the Project Delivers



IT
Equipment
Upgrade

Online
Member
Community
Platform



Local
Produce
Guide Digital
Portal

Our 5 Pillars

Consumer
App

Cloud-Based
Digital
Infrastructure





Economic, Social & Environmental Impact

Economic Impact

- Expected **10 to 20% turnover growth** across most members
- **New roles** created within Hampshire Fare
- Stronger member engagement and retention
- Increased local spend + wider consumer reach (20k+ Guide users, 25k newsletter subscribers).

Social & Rural Benefits

- Equal access for rural SMEs
- More networking opportunities
- Sector-wide digital capability uplift

Environmental Contribution

- Reduced print/post = **CO₂ reductions**
(approx. 2-3 t CO₂e)
- Less travel required for admin & meetings



Why LEP Funding is Essential

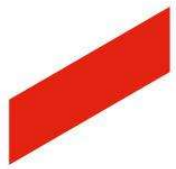
Without LEP Support

Only limited progress achievable; transformation postponed by **4 to 5 years**

- Rural producers face greater challenges
- Reduced productivity and slower economic expansion
- Lost chance to enhance and grow Travel and Tourism across the county

With LEP Funding

- Rapid delivery of an integrated digital ecosystem
- Lasting benefits for Hampshire and the IOW's food, drink and craft industry
- Food and Drink solidly established on the Travel and Tourism map
- Reinforces Hampshire & the IOW's status as the UK's leading food and drink destination

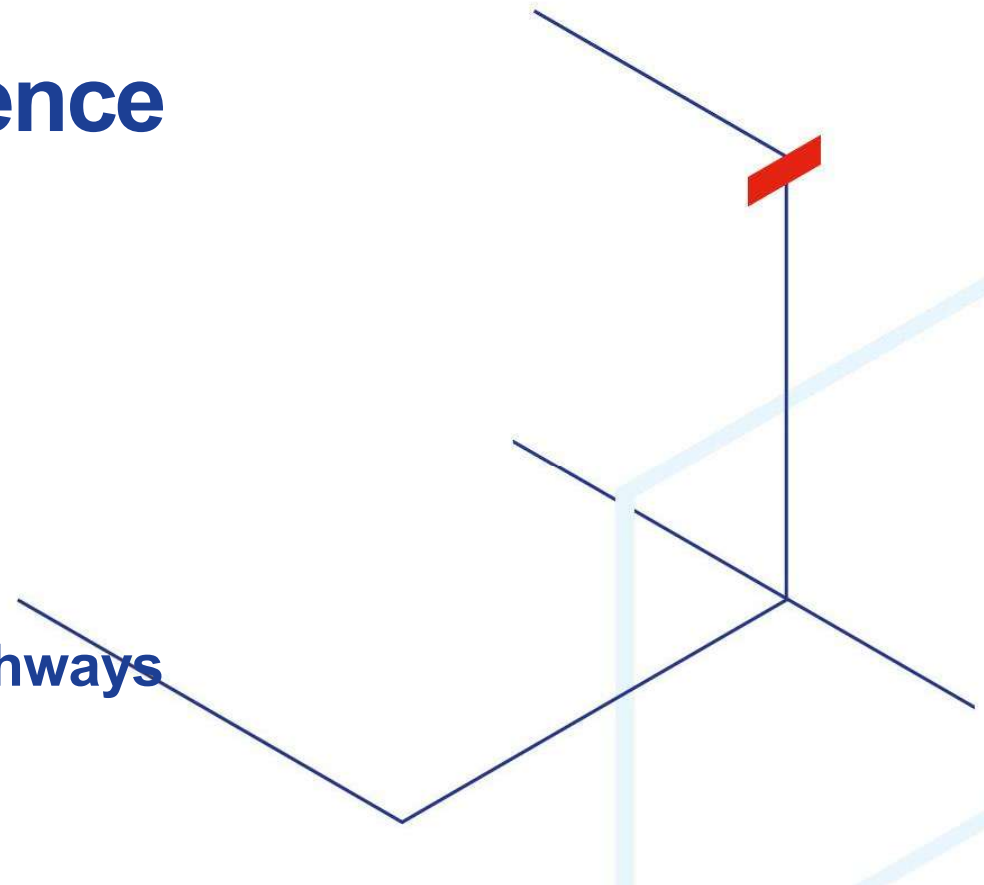


ADS Aerospace and Defence Curriculum

February 2026

Paul Oxley – ADS Skills

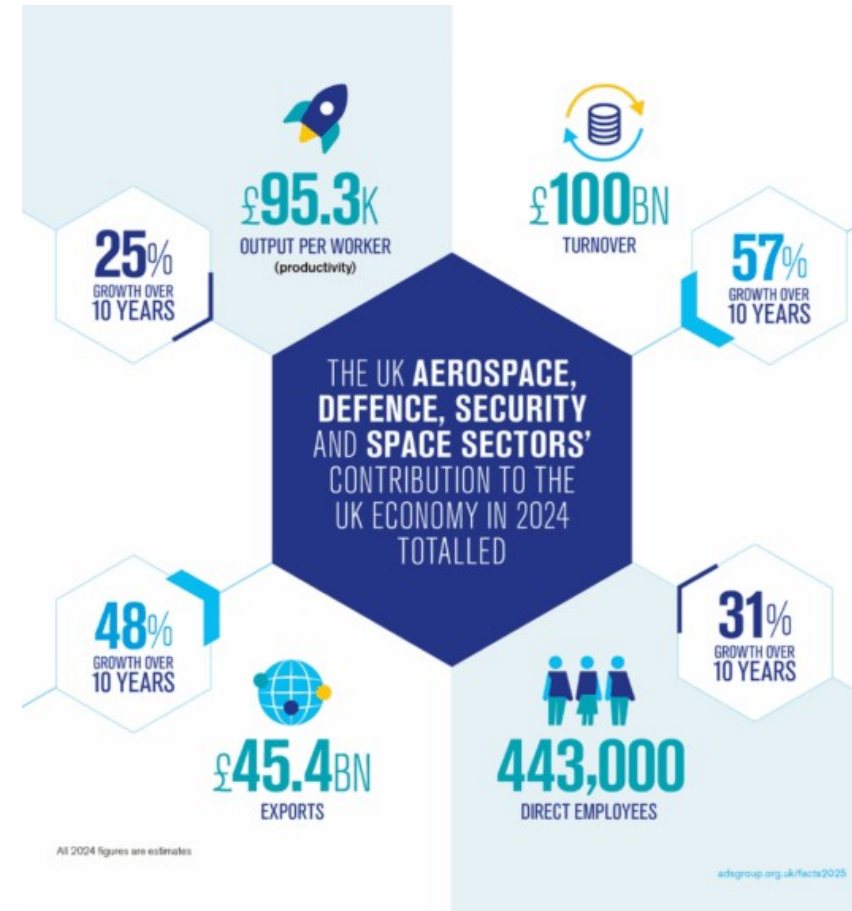
Matt Siggins – Technical Aviation Pathways



Why Aerospace and Defence Skills Matter

UK Government Focus

- Defence Industrial Strategy with £180m skills initiatives, including 5 new Defence Technical Excellence Colleges.
- UK Industrial Strategy targeting advanced manufacturing.
- Skills England priorities for technical education.
- Apprenticeship levy reform initiatives.
- Post-16 Education & Skills White Paper: Two-thirds of young people in higher-level learning by age 25 and Lifelong Learning Entitlement.



Hampshire is strongly positioned for employers, learners and commuters in high value, high growth industry

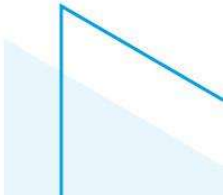
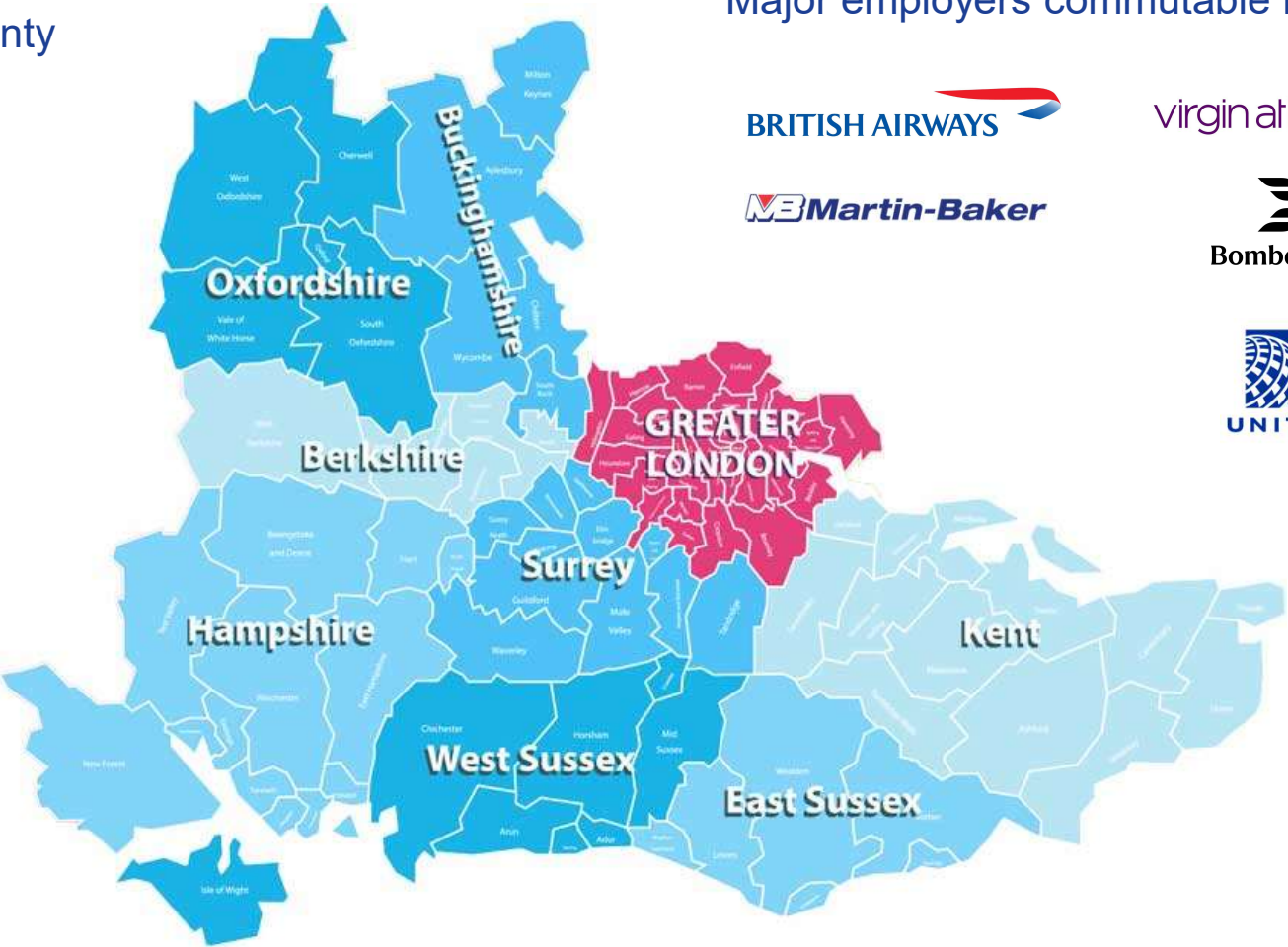


Major employers in the county

- BAE SYSTEMS**
- AIRBUS**
- QINETIQ**
-  **SAAB**
- LOCKHEED MARTIN**
- Gulfstream**
- VISTA JET**
- EXCEL**
-  **TECHNICAIR**
Aircraft Maintenance
- Gama Aviation**
- DRAKEN**
-  **Britten-Norman**

Major employers commutable from Hampshire

- BRITISH AIRWAYS**
- virgin atlantic**
- Martin-Baker**
- Bombardier**
- UNITED**



ADS Apprenticeship Curriculum

Comprehensive Approach

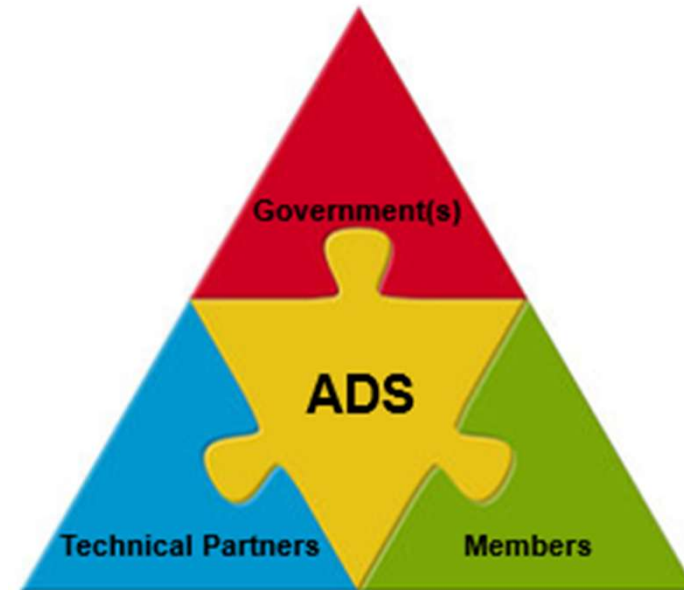
- Skills-led curriculum development
- Distributed training delivery through licensing
- Comprehensive mentoring support
- Co-ordinated outreach strategy

Mentoring Network Benefits

For young people: Career guidance, technical mentoring, professional development

For Employers: Programme design guidance, training pathway support

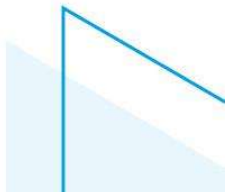
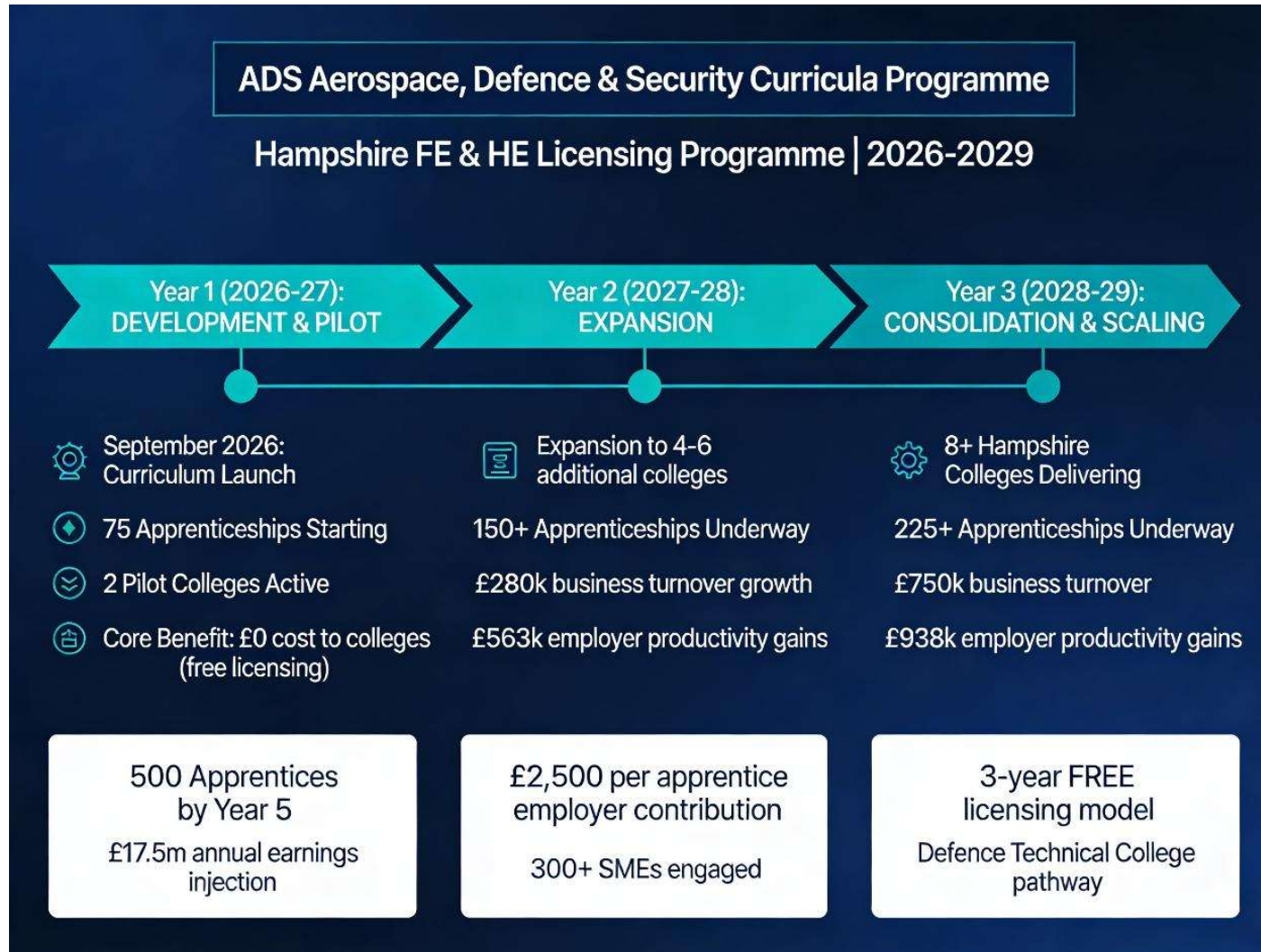
For Academia: consolidated demand signals, strategic industry insights and trade body leverage & support



Key Features

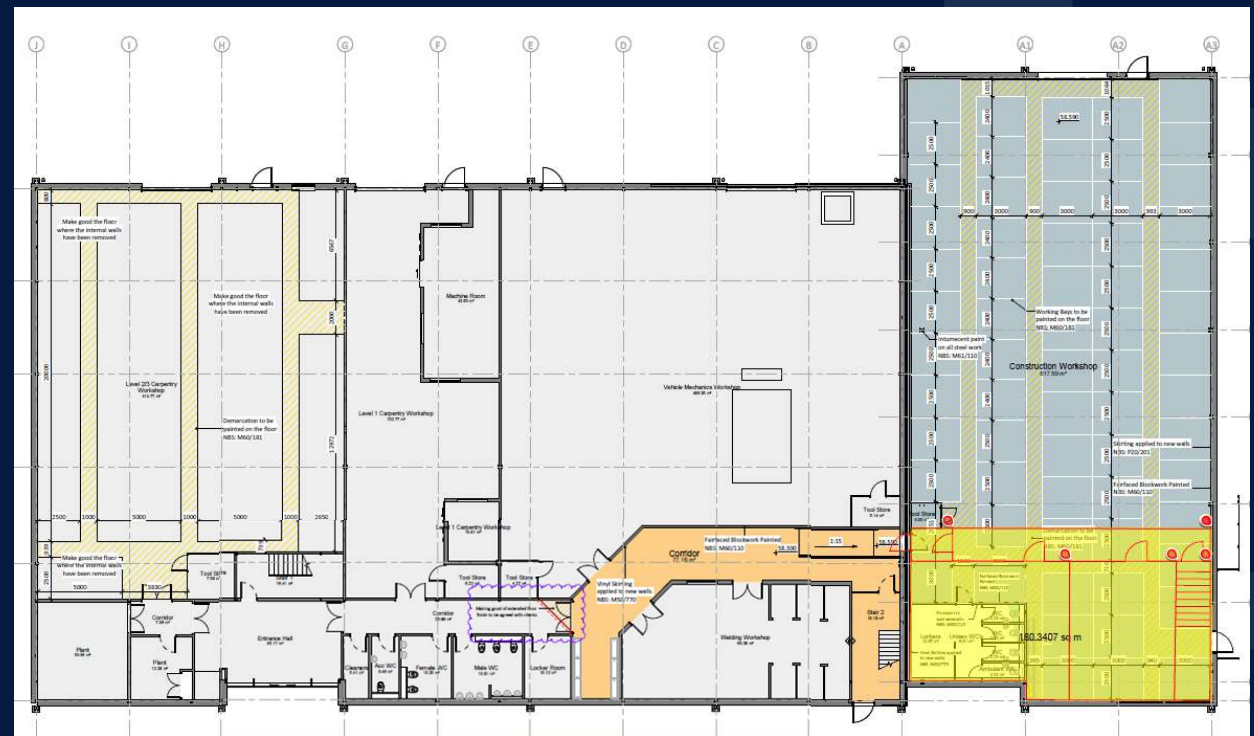
- Transition support into employment
- Best practice sharing through peer networks
- Workforce development strategy

Delivery Timetable



TITLE: Test Valley Community Construction Academy (Andover campus)

- Addition of a mezzanine extension to the current Future Skills Construction Centre
- Creation of multi trade bays, retrofit and green skills bays
- Addresses all four priority areas
- £1.32million project (80% funding requested from LEP legacy reserves)



ANDOVER
CAMPUS

SPARSHOLT
COLLEGE GROUP

Key Objectives of the Project

- Modernising and future proofing construction delivery
- Additional construction skills places- introducing more skilled entrants into the industry annually
- Supporting regional housebuilding targets
- Helping young adults to gain skills and get back on track/ into paid employment
- Extension of pathways for learners to progress into work or higher-level study
- Optimising the use of existing space to maximise the number of places

Strategic Alignment of the Project

- Hampshire's Economic Strategy:
 - Provision of skilled workforce; provision of quality environmentally sustainable housing; reducing emissions/ increasing renewable energy; making work accessible to all; social mobility
- Hampshire's Economy & Growth Plan:
 - Net zero transition; workforce that meets employer needs; Skills Bootcamps; support LSIP implementation (construction & low carbon); support Get Hampshire Working (tackling inactivity) and Connect to Work (sustained work opportunities); career opportunities for young people
- Modern Industrial Strategy:
 - Policy support for foundational industries- modernising the construction sector, embedding MMC; training/ upskilling workers
 - Advanced manufacturing and clean energy industries- IS8

Core Benefits of the Project

- Creation of 340m² of new construction training facilities
- Reorganisation of existing facilities to extend delivery in current offer
- Provision of high-quality training to provide a sustainable workforce to address regional skills gaps and labour shortages
 - Introduction of green skills and retrofit offer to Test Valley
 - Increase in number of learners aged 16+ achieving qualifications
- Increase in the number of learners moving into employment on completion of their qualification: support county wide



RUSHMOOR
BOROUGH COUNCIL

IncuHive

10th February 2026

Revitalising The Meads: Unlocking Farnborough's Economic Potential

Tim Mills

Executive Head of Property and Growth
Rushmoor Borough Council

George Scott-Welsh

CEO
The IncuHive Group



RUSHMOOR
BOROUGH COUNCIL



Overview

This bid delivers:

- Business and jobs growth
- Town centre regeneration
- 19,000 sqft of public sector owned commercial space brought back into use

Context:

- Farnborough is a major commercial hub, with strong connectivity and a growing professional and digital business base beyond its aerospace heritage.
- The Meads, owned by Rushmoor Borough Council, is the town's primary mixed-use shopping centre, offering an environment for SMEs seeking accessible, amenity-rich workspace.
- The Meads Business Centre includes five office floors, but two floors require major refurbishment, including heating upgrades and significant roof repairs to make the fifth floor usable.
- A partnership with IncuHive seeks £1.445m LEP funding plus £200k Council investment to refurbish 19,000 sqft of floorspace, with IncuHive taking a 5-year lease and revenue-sharing arrangement.
- The refurbished space will provide flexible, affordable offices, with private suites (150–1000 sqft), dedicated desks and hot desks, virtual offices and free business support, all with 24/7 access and parking.
- Local demand is strong, with 80% of businesses classified as micro-businesses and high concentrations in digital, information and professional services; sectors that typically drive demand for flexible workspace.



Context

- Private investment momentum is already building, with Loungers set to open a new all-day café-bar - bringing jobs, footfall and vibrancy and demonstrating growing investor confidence in the town.
- A new leisure centre is planned by Rushmoor Borough Council, featuring a 25m pool, learner pool, gym, studios and family facilities - providing a modern wellbeing hub for the community opposite the entrance to The Meads.
- Development of the adjacent plot to The Meads for over 100 older persons' shared ownership homes.
- The Civic Quarter regeneration is set to transform the heart of Farnborough, with plans for up to 960 new homes, alongside modern commercial, leisure and public spaces.
- Princes Mead Shopping Centre regeneration, led by Sovereign Housing Association, will introduce around 350 new homes as part of a residential-led, mixed-use redevelopment.
- Combined, these schemes signal significant short, medium and long-term investment into Farnborough, creating a more vibrant, liveable and economically resilient town centre that strengthens demand for flexible workspace such as The Meads Business Centre.
- This bid fills a hole in the heart of regeneration, enabling small business growth and employment, particularly needed in creative and aerospace sectors which are part of the Council's wider economic strategy.

**Founded in Winchester
10+ years
Over 200k sq ft managed**



About IncuHive

A family owned business born out of Winchester University's Business School, IncuHive has established a strong reputation for creating and managing flexible workspaces tailored to the needs of entrepreneurs, startups and small businesses.

With expertise in designing, operating and managing flexible workspaces, IncuHive consistently delivers fully-occupied, high-quality environments while taking care of all operational responsibilities. Our approach ensures the space is efficiently managed, generating reliable income and fostering a vibrant, collaborative community without requiring landlord involvement in day-to-day operations.

IncuHive operates a diverse portfolio of workspaces, ranging from a five-acre business park in the Test Valley to 8,000 square feet of office space in Weybridge. Our clients include private landlords, pension funds, local councils and corporate organisations, reflecting our ability to deliver tailored workspace solutions across a variety of sectors.

**“ IncuHive have exceeded my expectations;
managing my office has been seamless and
the returns have been excellent ”**

Richard Corcoran - Owner of IncuHive Brockenhurst - 10,000 sqft

Project Management

- Five-person regeneration team with a project and construction management background and established project management process.
- Qualifications include: membership of Association of Project Management, Prince2 and membership of the Chartered Institute of Arbitrators, NEBOSH, Urban Regeneration qualifications.
- Previous successfully delivered projects at differing scales include:
 - Union Yard - £40m town centre mixed use scheme in Aldershot
 - Aldershot Crematorium - £4.5m crematorium redevelopment
 - The Landing - £500k public realm project
- All Capital Projects are overseen at Senior Leadership Team level through programme arrangements led by the Executive Director.
- IncuHive will lead delivery of the fit-out works, reporting into the Council's project governance. IncuHive have managed over 100,000 sqft of office fit-outs and are currently delivering an 8,000 sqft refurbishment in Basingstoke. We operate with an in-house design and project management team, supported by appointed specialist contractors to deliver construction works.

RUSHMOOR
BOROUGH COUNCIL



**Hampshire
Prosperity
Partnership**



**Hampshire
County Council**



IncuHive

LEIGH PARK SKILLS CENTRE



Havant
BOROUGH COUNCIL

 **City of
Portsmouth
College**

 **ark**
Community School

OPPORTUNITY



“To ensure all agencies are working together to provide the skills and opportunities needed to drive economic growth.” **Hampshire Skills Partnership**

Using Havant Borough Council owned land to develop the Leigh Park Skills Centre, 1,860m² new build that will co-locate the following services:

- New provision for construction skills for 16+ and adult learners – **City of Portsmouth College**
- 14–16-year-old construction skills provision – **Park Community School**
- Youth Hub – Employment, training and job matching – **Havant Borough Council**
- With input from other key partners – **DWP, Bloor, Comserv, Southern Water, Portsmouth Water, Hampshire County Council**

WHY IT IS IMPORTANT

Create clear pathways into well-paid employment

Support a sector with critical skills shortage

Create measurable economic benefits

Address deep rooted deprivation in Leigh Park

Tackle high NEET rates and youth disengagement

Enable co-location of services for maximum impact

Remove barriers to accessing education and training

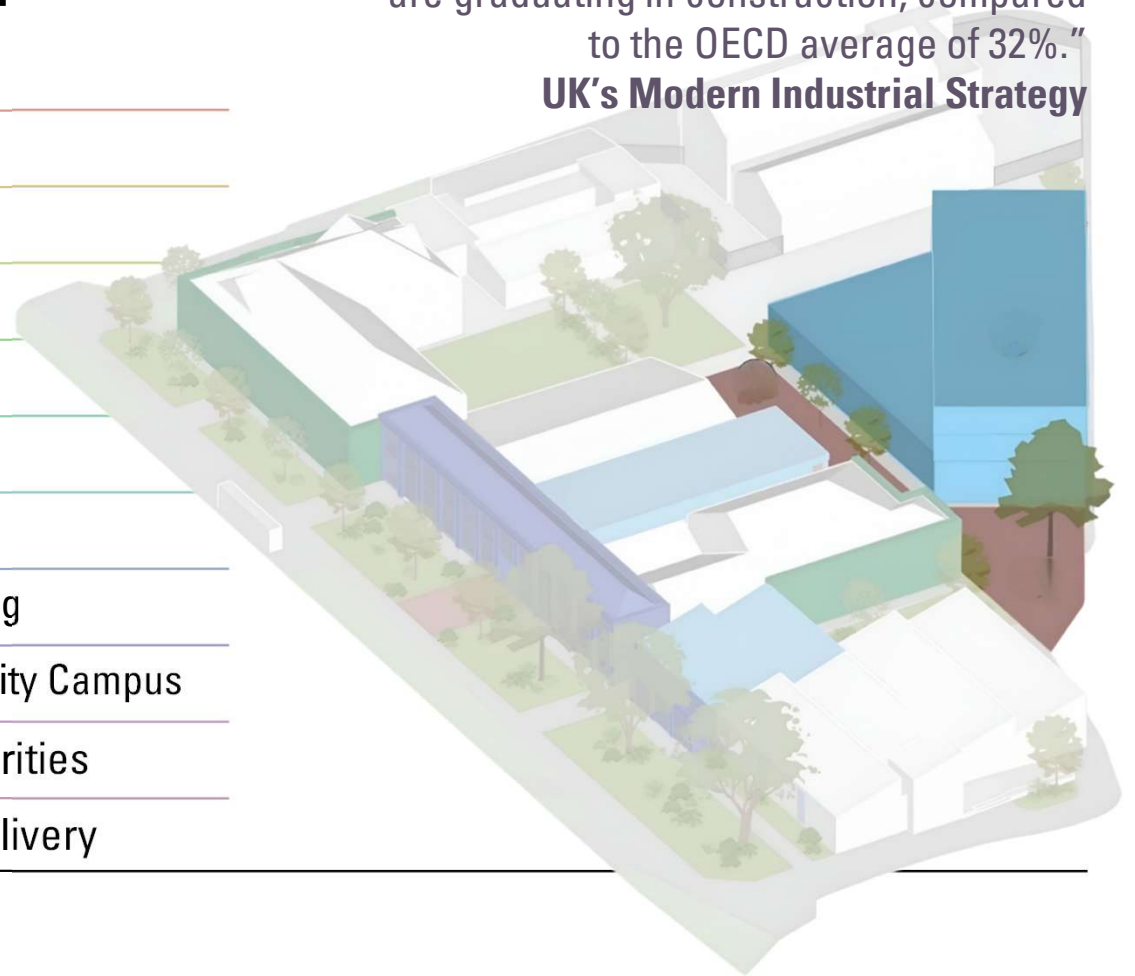
Advance wider regeneration of Leigh Park Community Campus

Strengthen Hampshire's economic and skills priorities

Strong multi-agency collaboration to enhance delivery

"Only 9% of secondary vocational learners are graduating in construction, compared to the OECD average of 32%."

UK's Modern Industrial Strategy



WHAT WE CAN ACHIEVE

- Support over 180 - 14–16-year-old PCS pupils per year with construction skills training through COPC
- Train 150 - 16+ students per year with 80% receiving construction skills qualifications
- Provide modern suitable training facilities
- Job match 70 - 16-24-year-olds entering construction industry per year – 35 from Youth Hub
- Secure Youth Hub future location to support 400 + 16-24yr olds across all sectors (280 into training & skills)





UNLOCKING FURTHER OPPORTUNITIES

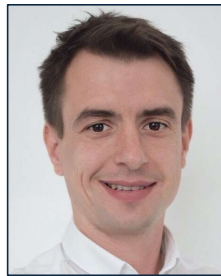
- Centre point for wider regeneration of Leigh Park Regeneration.
 - Creating opportunity for residential / community or further learning spaces
 - Opportunities with Pride in Place Programme and other funded programmes
 - Increased civic pride in Leigh Park Centre
 - Wider co-location benefits with other organisations on the community campus site
-

Bacteriophage Facility

Manufacturing Medicines in Hampshire for the UK and the World



Peter Baker
Commercial and
Enterprise Director
University Hospital
Southampton



Frank Smerkar
Chief Executive
Officer
Jafral



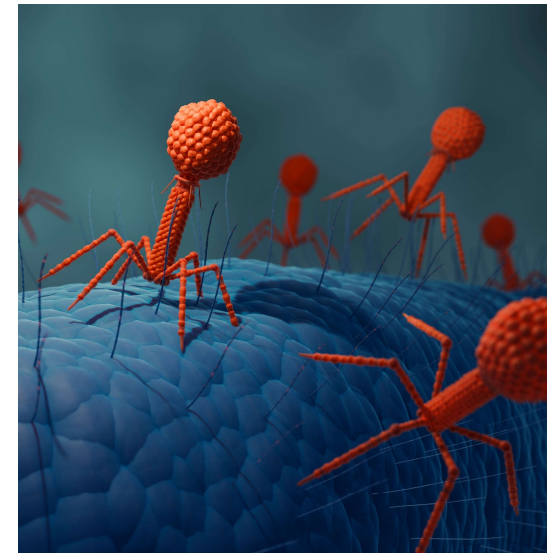
Professor Mark Sutton
UKHSA Scientific
Leader



Professor Diana Eccles,
Dean, Faculty of Medicine University
of Southampton
Non-executive Director, University
Hospital Southampton

Phage - demand and opportunity

- In the UK - around 400 new **drug-resistant infections** per week **costing the NHS over £180 million per year** (cost to global economy est. \$100 trillion by 2050)
- **Phage are novel therapies** that **target drug-resistant infections** to treat untreatable infections
- **UK Parliament Inquiry** (report 2024) made recommendations for the **UK to manufacture, test and use phage to treat these infections.**
- **UKHSA National Phage Service** will enable accessing phage easier for doctors and patients, potentially treating 100's cases per year.
- **No existing UK GMP manufacturing capability**
- **First UK Phage (Biologics) Manufacturing facility @ADANAC, will generate regulator-quality materials:**
 - *Current clinical use*, through the UKHSA Phage Service
 - *Future clinical trials*, delivered in the UK and internationally
 - *Material for R&D and experimental medicine* studies.
- **Phage has other applications:** for example defence, veterinary, food supplements, agriculture, and dermatology



Why Hampshire?

- A Jewel in the Crown for the Hampshire Life Sciences Cluster
- The opportunity with UHS/UoS is now
- Global Phage academic expertise at UoS
- NIHR Biomedical Research Centre (UHS/UoS)
- National Biofilms Innovation Centre (UoS) (>300 industry partners)
- Strategic partnerships with UK Health Security Agency and Defence Science and Technology Laboratory (Porton Down)
- Multiplier with the Microbial Innovation Centre



Hampshire - delivering through partnerships

- Our partnership brings **inward investment** to Hampshire
- Jafral – the world's largest Phage manufacturer
- Delivers **state-of-the-art facilities** building on Jafral's experience
- Co-located with the new UHS **regional aseptic pharmacy** unit building on **existing distribution function** for economy of scale
- Our **business growth** plan is built on predicted UK demand and supply market modelling (UKHSA) and international growth experience (Jafral)
- **Within 6 months** – complete fit out space to create the production capability
- **Within 2 years** – fully established, GMP-compliant manufacture supplying phage to the NHS
- **Within 4 years** Hampshire-manufactured phage will be used throughout the UK and internationally



JAFRAL Receives Silver National Award GAZELA 2025 for Fast-Growing Companies



JAFRAL – Founding Member of PhageEU Coalition



Impact in Hampshire: economic growth and new skills

- The capital investment requirement is £10m+
- Jafral will bring £7m foreign direct investment to Hampshire
- A new company will be setup to create:
 - **Employment** Opportunities in highly skilled roles
 - **Training** opportunities for scientific and lab-based skillsets
 - Co-ordination with local Higher Education to bring forward a new generation of **technicians**
 - Further **economic growth** benefits as Hampshire becomes centre of a new **UK Lifesciences sector**
- **For every job created in NewCo, we expect 3 or more to be generated in local innovation ecosystem (SMEs, academia and health sector)**

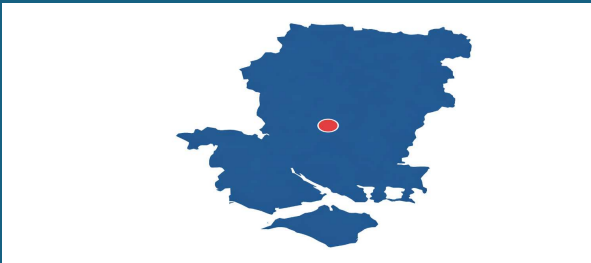


Benefit	Financial year							
	26/27	27/28	28/29	29/30	30/31	31/32	32/33	33/34
Jobs created	4	6	8	10	20	30	35	40
Growth in business turnover	£0 M	£0.6 M	£3 M	£6 M	£9 M	£12 M	£14 M	£16 M
Learners aged 16+ achieving qualifications	0	1	3	5	7	10	11	12



 Hampshire
County Council

 UNIVERSITY OF
WINCHESTER



Matt Webster
Justin Ridgment
Justine Clements

Bid: £3,519,000 (50.4%)
Match: £3,463,379 (49.6%)
Total: £6,982,379



The Evidence: Why Hampshire Needs BRIDGE

Data drawn from Hampshire's own Economic Strategy & Skills Strategy 2025

39,000

working-age residents economically inactive due to long-term sickness/disability

214,000

total economically inactive residents (16–64) across Hampshire

75%

Rural & Coastal Geography
300,000 Hampshire Residents with related barriers to access

Skills Crisis

33% of vacancies are hard to fill
due to skills shortages

Caring & service occupations: 18%
skills shortage vacancy rate

39% of employers are not able to provide any training

Health, Education & Construction
identified as sectors with shortages in two LSIP reports

Demographic Pressure

Working-age population projected to **decline by 2043**

Notable growth in retirement-age **population → rising demand for care**

35.9% reduction in Public Health funding per person
Vs England Average (HCC Area)

SMEs lack safe test/iteration space

SIMULATED HOME

HYFLEX + STUDIO

Future Skills for Hampshire's Workforce

How BRIDGE Drives SME Growth

Every BRIDGE facility serves the SME innovation pipeline — nothing sits idle

The 8-Week SME Support Cycle

Up to 3 cycles per year • Each facility plays a role



The Gap BRIDGE Fills

Hampshire has 150+ Life Science businesses and 25+ Digital Tech specialists—but they lack safe, realistic space to test and iterate products.

Workforce adoption and feedback: common barrier

Provides early adoption opportunity and advocacy

Spirit Health (Global MedTech): testing, validation & training are the barriers that hinder product launch.

BRIDGE in the Hampshire Ecosystem

Southampton/Portsmouth Science/Innovation Parks
Initial R&D, Catalyst start-up, links to venture capital

BRIDGE
Refine, validate, train, adopt

Market
Hiring, revenue

No comparable adoption-stage facility exists in Hampshire, Southampton, Portsmouth or IoW

Projected SME Impact: Turnover to **£2.03M p.a.** by 33/34 • 50% of SMEs hire 1–2 FTE • 3 cycles/yr at capacity

Strategic Fit: Local Priorities, Our Solution

BRIDGE addresses all 4 LEP priority areas and all 6 Hampshire Skills Strategy priorities

4 LEP Legacy fund Priority Areas



High-Potential Sectors

Life Sciences, Digital, Advanced Manufacturing, Health & Care — direct IS-8 alignment



Business Support

Digital Foundry for SME prototyping, testing & validation with real users



Infrastructure

£7m capital investment in HyFlex suites, simulation, foundry & studio



Skills & Careers

50–75 qualified learners/yr + 20 specialist NEET practitioners/yr

6 Skills Strategy Priorities

1

Collaborative Development Curriculum

Co-design with HCC, NHS, IS-8 sector representatives

2

Opportunities to Learn

HyFlex remote delivery overcomes rural access barriers and community-based practitioners

3

Careers Navigation

Visible pathways in digital health, MedTech & community care

4

Future-Ready Skills

Digital health, MedTech innovation, instructional media- Made in Hampshire

5

Education Partnerships

University + NHS + HCC + SME collaboration

6

Upskilling

Co-location of skills + cluster engagement

BRIDGE is Hampshire's strategy, made real.

Project Delivery and Governance

- The BRIDGE is located in our award-winning sector leading building
- High profile street level location

- Proven project delivery and governance process
- Experience of delivering large scale projects on time on budget

- Project procurement undertaken through appropriate framework such as Hampshire Construction Framework

Design
November
2026

Virtual
BRIDGE
Dec 2026

Procurement
April 2027

Fit-out
start
June 2027

Fit-out end
November
2027

Operations
to 2033/4
and beyond

**SOUTHERN
CREATIVE
CATALYST**

THE HAMPSHIRE CREATIVE BUSINESS ESCALATOR



The Opportunity for Growth



UK IS CREATIVE INDUSTRY POWERHOUSE

£123bn GVA (2024, 5.37%, DCMS)

+1.7% Y-o-Y (vs 0.82%, DCMS)

IT/digital, marketing/advertising, film/TV,
architecture, design, publishing



HAMPSHIRE & IOW CREATIVE ECONOMY

£5.25bn GVA (2023, +8% CAGR 2020-23)

11,420 businesses

39,800 employees, 80,500 workforce



'ATOMISED' ECONOMY

SME/Micro Business/Freelancers

Average business ~4 employees

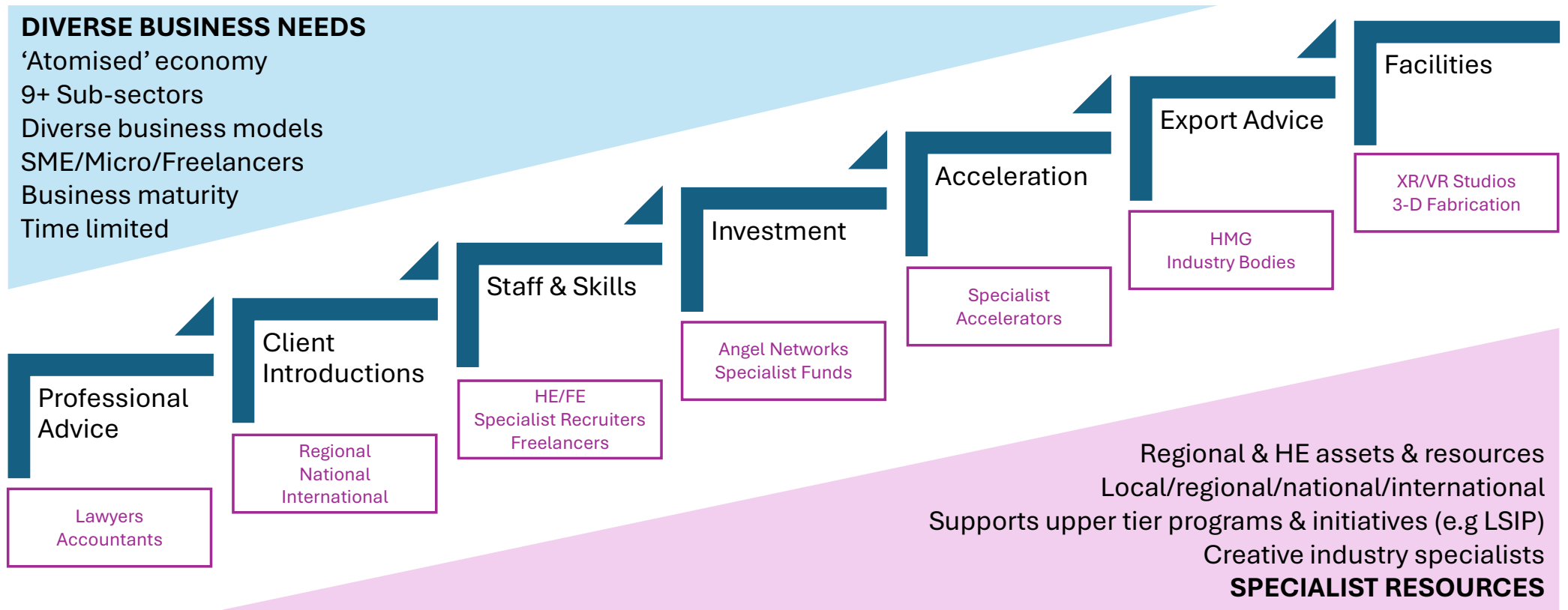
Geographically dispersed (M27/M3)

Limited 'primes'

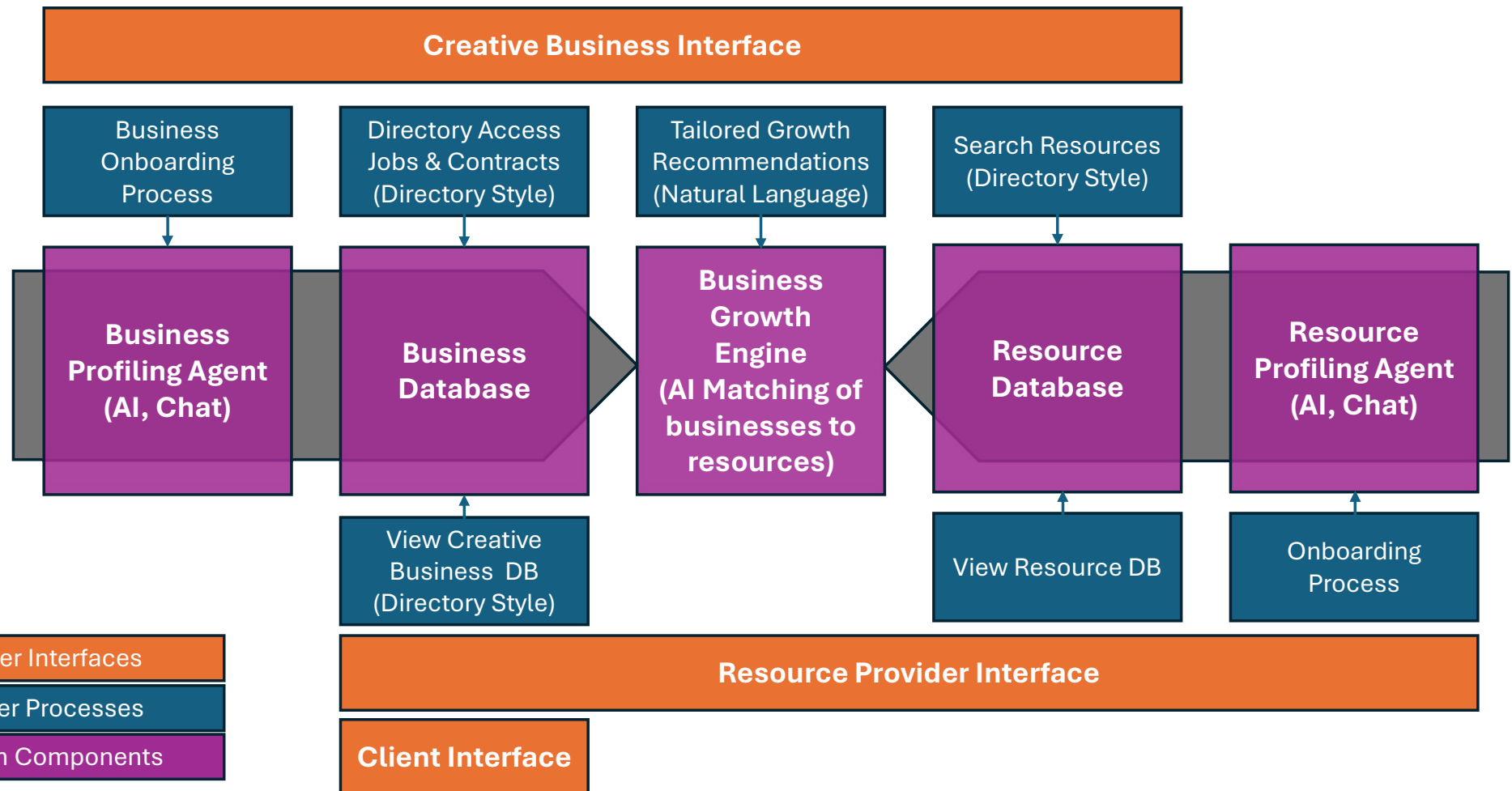


Hampshire Creative Business Accelerator

Right Business. Right Resource. Right Time. At Scale



The Digital Platform



MATHS & ENGLISH (ME) HUB – HAVANT

A FLEXIBLE, MODULAR MATHS &
ENGLISH SKILLS HUB FOR NEETS
PREVENTION (AGES 16-24)



Presented by:
SUKI DHESI, Deputy Principal
DAVE GALLOWAY, Director of Teaching &
Learning



THE CHALLENGE & OPPORTUNITY



THE PROBLEM

- Havant / Leigh Park has some of Hampshire's highest levels of deprivation and NEET prevalence.
- Existing provision is too rigid (year-long GCSE model), creating barriers for disengaged young people.
- Lack of accessible environments designed for those with low confidence, low prior attainment, or complex personal barriers.



THE OPPORTUNITY

- Provide a high-impact, flexible route back into education / employment.
- Unlock human capital in an area where foundational skills gaps directly restrict economic mobility and productivity.
- Directly support Hampshire's priorities on Inclusive Growth, Tackling Deprivation and Connect to Work.



THE PROJECT: WHAT WE ARE BUILDING

A new multifunctional learning hub at HSDC

Havant, including:

- **Modern IT-enabled learning suite**
- **Booths for intensive 1:1 support and assessment**
- **A 'chill-out' social integration zone**
- **Group collaboration spaces**

Delivery Model:

- **Roll-on/ roll-off modular GCSE & Functional Skills English / Maths**
- **Short, 'chunked' assessment milestones giving rapid early success**
- **Personalised mentors supporting attendance, confidence, wellbeing, and progression**
- **Integrated careers guidance aligned with the Hampshire Careers Hub**



TARGET

100 NEET or at-risk learners per year (16–24).

STRATEGIC ALIGNMENT



HAMPSHIRE ECONOMIC STRATEGY (25–27)

- Tackling deprivation and widening participation
- Strengthening Human Capital
- Supporting inclusive, place-based growth in Leigh Park / Havant

ECONOMY & GROWTH PLAN FOR HAMPSHIRE

- Action E5: Connect to Work
- Action E7: Hampshire Careers Hub
- Creates a more inclusive labour market

GOVERNMENT INDUSTRIAL STRATEGY (MODERN INDUSTRIAL STRATEGY)

- Skills Bootcamp-style flexibility for re-engagement
- Strengthening the national skills pipeline
- Providing foundational skills needed across IS-8 sectors

PORTSMOUTH NET ZERO PARTNERSHIP

- Directly complements regional cross-authority pathways
- Provides immediate delivery capacity for referrals





Faraday Connect

Connecting Business
Powering Growth

assetmanagement@fareham.gov.uk

www.fareham.gov.uk

February 2026

FAREHAM
BOROUGH COUNCIL



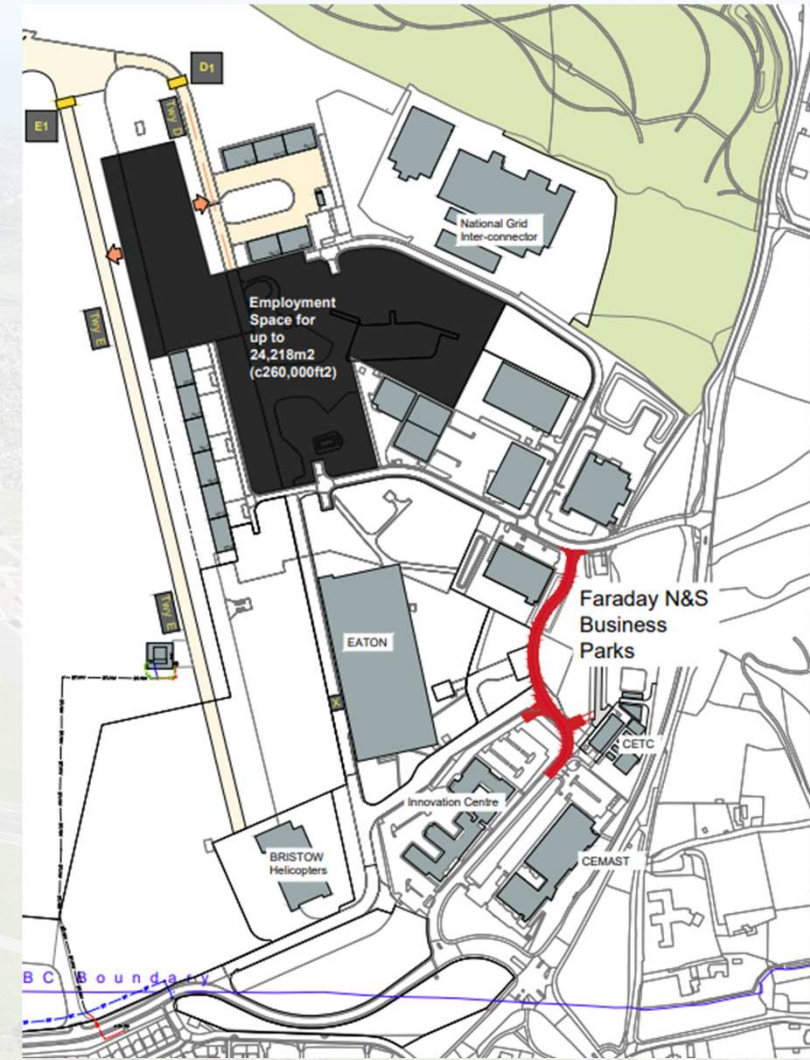
Project Overview

Improvement to road layout and power supply to Faraday North Business Park

- Link Road
- Spitfire/Broom Way junction improvement
- Accelerated 1,500 KVA power upgrade

Key Objectives

- 1) Unlock 24,218 sqm of otherwise fully serviced land with outline planning consent for high value development for aerospace and engineering
- 2) Job Creation - Delivering circa 450 jobs



Attracting inward investment
£41m annual turnover
Advanced engineering
Regional economic growth
Gearing effect
Aerospace cluster
Regional supply chain growth
Solent Enterprise Zone at Daedalus
Reducing congestion
Non-commercial infrastructure
Energy, transport & business space infrastructure
High value industrial development
450 high-value jobs
Strong investor interest
Link road
Pedestrian & cycle links
Advanced manufacturing
1,500 KVA power upgrade
1,055% ROI
Enabling 24,218m² employment space
50% match funding
Experienced team
Unleashing potential
Tested delivery model

Strategy Alignments

UK's Modern
Industrial
Strategy

Economic
Strategy for
Hampshire

Economy &
Growth Plan
for
Hampshire

Fareham's
Local Plan

Fareham
Borough
Council
Corporate
Strategy

Daedalus
Vision &
Outline
Strategy

Capability to Deliver

New Road Access to Bristows
Retained Business Rates



Business Hangars 3,600 sqm
Borrowings



Industrial Development 5,600 sqm
Borrowings/FBC Capital



GA Hangars 2,900 sqm
Borrowings/Grant Funding





LEP Legacy Reserves

Seascape Restoration and Innovation Centre

Restoring nature to restore livelihoods

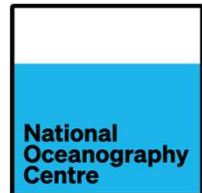
Professor Joanne Preston, Dr Michelle Hale, Kate Ansell & Martyin De Retuerto



BLUE MARINE FOUNDATION

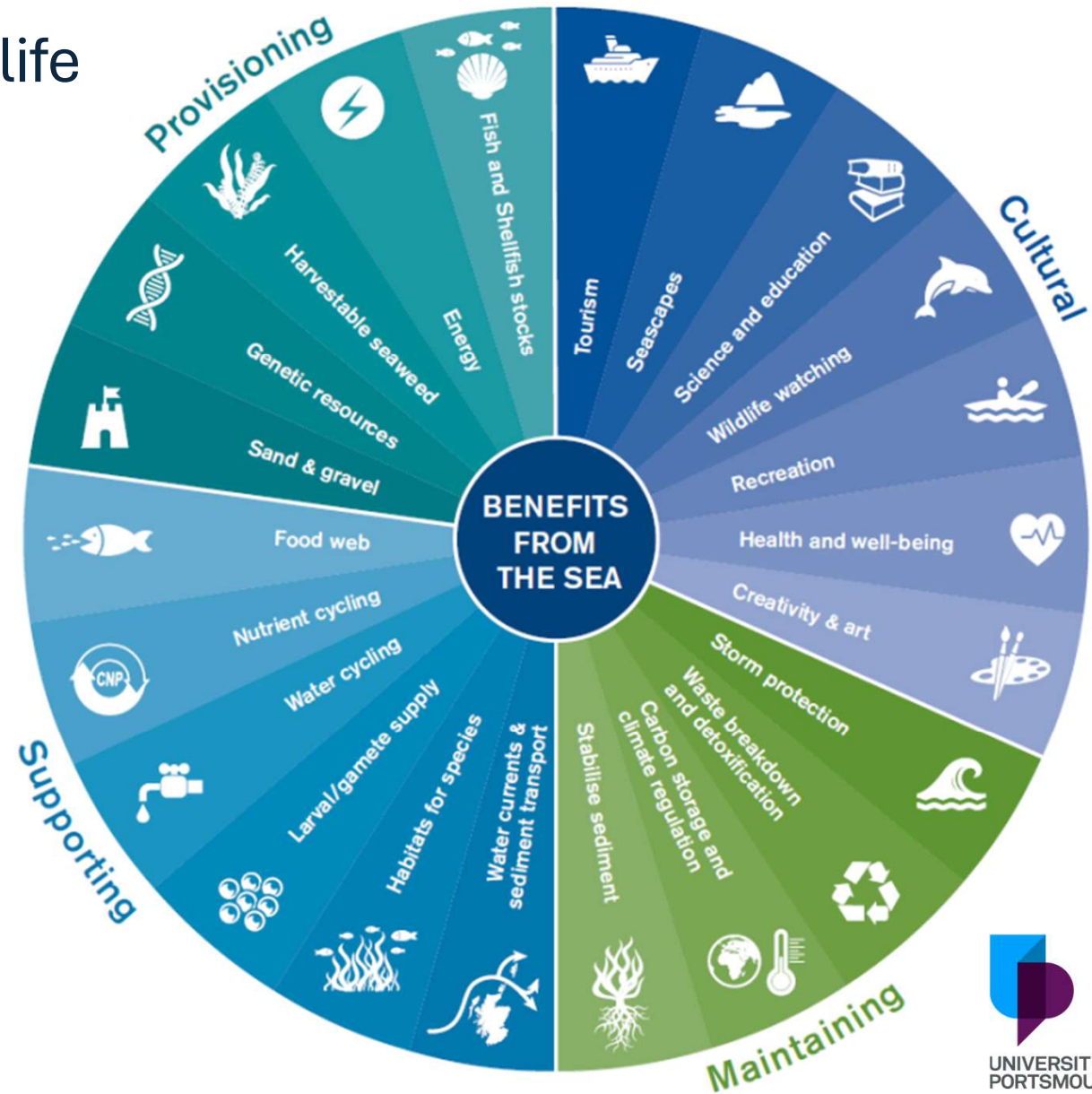


Photo: Shaun Roster



Nature is essential to human life

- **Ecosystem Services** are the direct and indirect contributions ecosystems provide for human wellbeing and quality of life. (NatureScot)
- Biodiversity underpins delivery of ecosystem services
- Nature-based Solutions (NbS) depend on these ecosystem services to deliver:
 - Climate mitigation
 - Pollution remediation
 - Reverse biodiversity loss
 - Maintain food production
- If humans are to thrive, nature must thrive.





90% UK saltmarsh lost



Nearly all SE Kelp lost in last 50yrs



92% UK Seagrass meadows gone



>95% UK Oyster Reefs collapsed

UK OFFICIAL



HM Government

Global biodiversity loss, ecosystem collapse and national security

A national security assessment



Key judgements

HIGH

1. **Global ecosystem degradation and collapse threaten UK national security and prosperity.** The world is already experiencing impacts including crop failures, intensified natural disasters and infectious disease outbreaks. Threats will increase with degradation and intensify with collapse. Without major intervention to reverse the current trend, this is highly likely to continue to 2050 and beyond.
3. **Critical ecosystems that support major global food production areas and impact global climate, water and weather cycles are the most important for UK national security.** Severe degradation or collapse of these would highly likely result in water insecurity, severely reduced crop yields, a global reduction in arable land, fisheries collapse, changes to global weather patterns, release of trapped carbon exacerbating climate change, novel zoonotic diseases and loss of pharmaceutical resources. The Amazon rainforest, Congo rainforest, boreal forests, the Himalayas and South East Asia's coral reefs and mangroves are particularly significant for the UK.
4. **Ecosystem degradation is occurring across all regions. Every critical ecosystem is on a pathway to collapse (irreversible loss of function beyond repair).**

ECONOMIC IMPACT of MARINE HABITAT RESTORATION



Natural Capital Markets

Evidence to support growth of high-quality nature markets



Skilled Job Creation

Supports demand for marine scientists, restoration specialists, and more



Private Investment

Attracts funding for high-quality NbS projects



Coastal Resilience

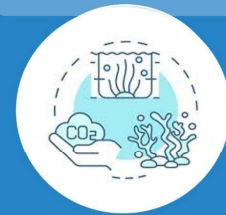
Strengthens fisheries productivity and protects coastal communities



Global Leadership

Positions country as a pioneer in marine restoration

Seascape Restoration & Innovation Centre



Blue NbS

- Seascape Restoration
- Restorative Aquaculture
- Blue carbon nursery

↓ CO2 Emissions

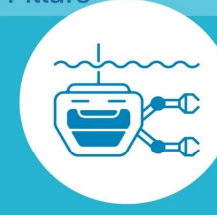


Blue Skills

- Bivalve production
- Seed propagation
- Algal culturing

↑ 16+ Qualifications

Delivery Pillars



Blue Innovation

- UAV robotics
- eDNA
- Acoustics
- AI identification

↑ Business turnover



Blue Growth

- Business space
- Employment
- Sector growth

↑ Job Creation

Technology

- Advanced, effective, scalable monitoring of coastal ecosystems
- Test, develop, de-risk & scale NbS

Knowledge

- Contextual drivers & quantification of Ecosystem Services
- Interdisciplinary research for effective NbS

Finance

- Evidence for ROI to reduce risk & increase investor confidence
- High quality nature finance & accreditation



Natural



Physical



Human



Knowledge

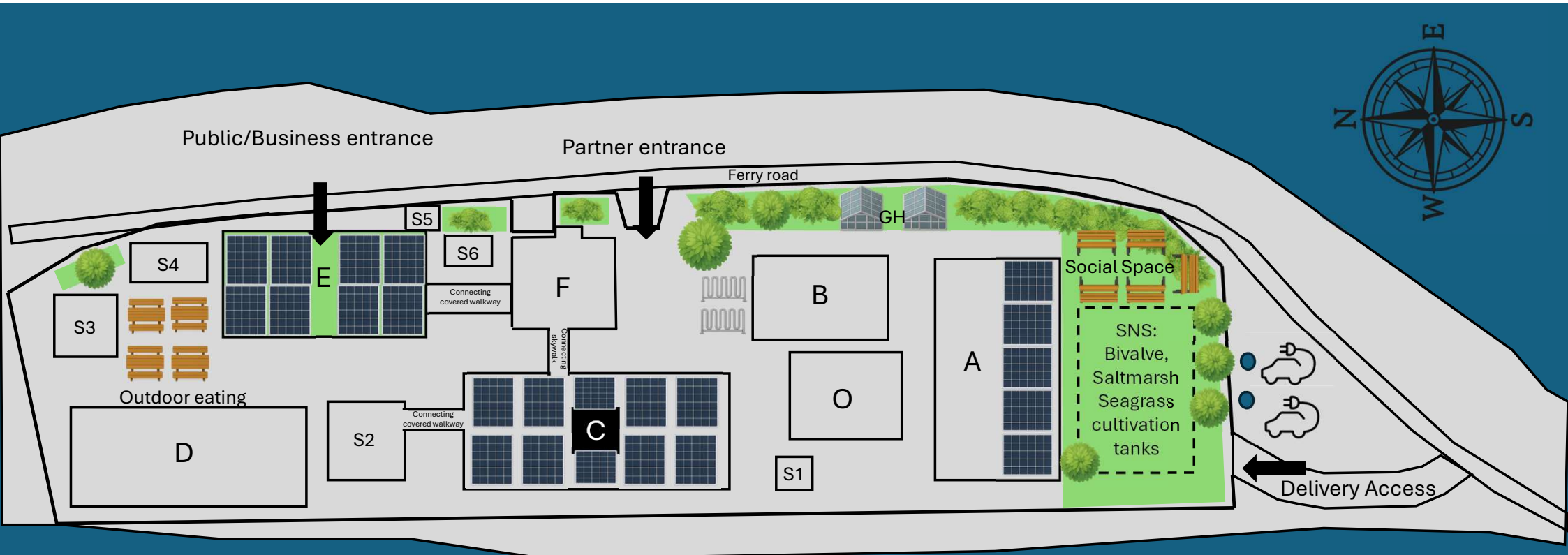


Social



Institutional

Advancing Nature-based Solutions
for biodiversity, climate resilience & inclusive blue-economic growth

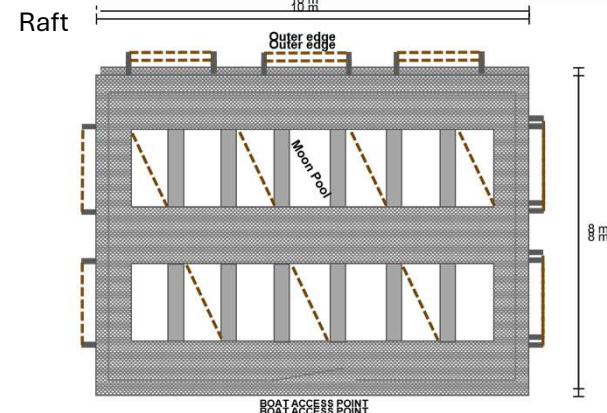


Main buildings

- A: Teaching lab, and lecture theatre
- B: Offices
- C: Aquatic centre, research laboratory, and outdoor class space (roof)
- D: Offices, research laboratories, and staff room
- E: Seascape Restoration Hub (café, business space, education suite)**
- F: Seascape Innovation Lab (mesocosms & culturing)**
- SNS: Seascape Nursery Systems (Raceways & settlement tanks)**
- O: Replaced and modernised Outdoor tanks

Support buildings and areas

- S1: Seawater pumps and compressors
- S2: Growth rooms
- S3: Field store, kit washing, and shower
- S4: Specimen and workshop
- S5: Gas/recycling store
- S6: Switch gear
- GH: Green houses**
- Raft: Raft moored in Langstone Harbour



: Solar Panels.
 : Ebike/bike racks.
 : E vehicle charging



LEP Legacy Bid

South of Romsey Town Centre Masterplan

Romsey Bus Station

Thursday 12th February 2026

Test Valley 
Borough Council

Scope

- Ambition to deliver an improved entrance to the southern gateway to Romsey.
- Complement town centre. Economic support for high street. Reinforcing mixed uses in central location.
- Since adoption of the masterplan the scope of the intention has narrowed to TVBC controlled land.



Proposals

- Community Hall, public realm, food and beverage
- New and improved bus station
- 285 space decked car park
- Improvements to public realm and pedestrian crossings to improve connectivity between sites



Engagement

- Extensive community and stakeholder engagement since 2016.
- Partnership working with Romsey Future.
- Vision has been endorsed by HCC.
- 2 Citizens' Assemblies in 2019 and 2024. Nationally significant approach to participative democracy.
- Cross party support and endorsed by community organisations through RF.



Consultation on the draft Masterplan options for the South of Romsey Town Centre area will run from Friday 7 February to Friday 20 March 2020.

Look out for the Masterplan Pop Up at the Country Market at Romsey Town Hall:

- Friday 14 February: 10am - 11.30am
- Friday 28 February: 10am - 11.30am

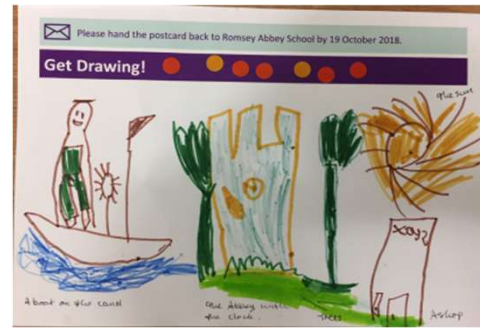
Meet the Masterplanners:

- Romsey Town Hall, Market Place, SO51 8YZ: Saturday 15 February: 12pm - 6pm
- British Legion, Shean House, Love Lane, SO51 8DE:
 - Thursday 20 February: 4pm - 8pm
 - Wednesday 11 March: 10am - 4pm

Complete the online questionnaire:
www.surveymonkey.co.uk/r/southofromsey_draftmasterplan

For more information visit:
<https://www.romseyfuture.org.uk/romsey-sotc>

NEXUS PLANNING Romsey Future Perkins&Will Alan Baxter



Current Position

- Extensive Community Engagement leading to consensus on preferred option
- Council Approval
- Mandate and budget approval for appointment of design team
- Engagement with passenger transport and bus operators
- Procurement process. Community panel.



EXISTING SITE USES

1. 84 car parking spaces including 10 disabled spaces. (DDA spaces to be relocated on site)
2. Bus Loop with 5 bus shelters (to be reprovided on site)
3. 1no Coach Parking Space (to be reprovided on site)
4. Public Toilets (to be reprovided on site)
5. Service Lane for shops (to be retained)
6. 2no Taxi Pickup/drop off spaces (to be reprovided on site)
7. Recycling Point (to be reprovided on site)
8. Taxi Office, small TVBC office (to be relocated on site)

GEA of existing WC and offices: 160sqm
GIA of recycling point: 20sqm



The Ask

- Delivery of improved bus station and sustainable transport hub to promote active travel.
- Recognise the importance of public transport. Hence central location in scheme.
- Improving bus station offer and capacity, future proofing it for future growth in demand from new residential development





The Hampshire Microbial Innovation Centre

An open access facility supporting business R&D to scale and grow in Hampshire



Jeremy Webb



Jo Slater-Jefferies



Joe Parker



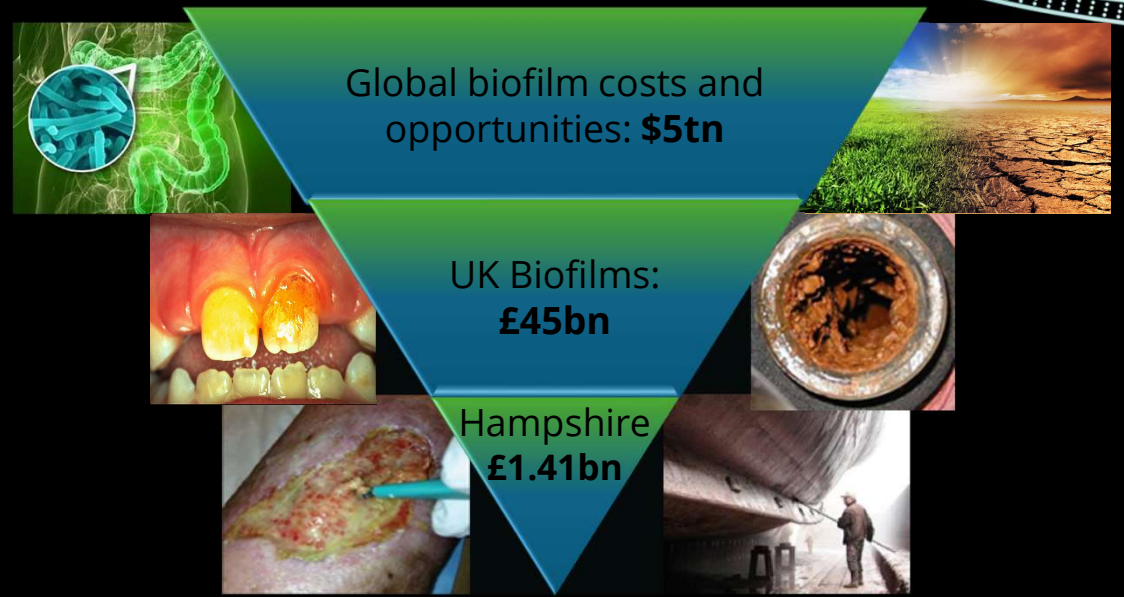
Lucinda Lamont

Life Science Innovation Cluster



Economic Challenge and Opportunity

- ✘ Biofilms - Complex bacterial communities - cost Hampshire and the IOW ~**£1.41bn annually** (£45bn UK, \$5tn globally).
- ✘ Hampshire businesses **need specialist facilities**, testbeds and regulatory support to develop and scale microbial and biofilm technologies.
- ✘ This creates high technical and financial risk.
- ✘ Without enterprise-ready infrastructure, Hampshire cannot fully unlock opportunities for **jobs, skills, inward investment and innovation-led growth**.



NEWS

South Western Railway disruption after biofuel clogs engines

NEWS

More hospital superbug cases detected at Portsmouth Hospitals Trust

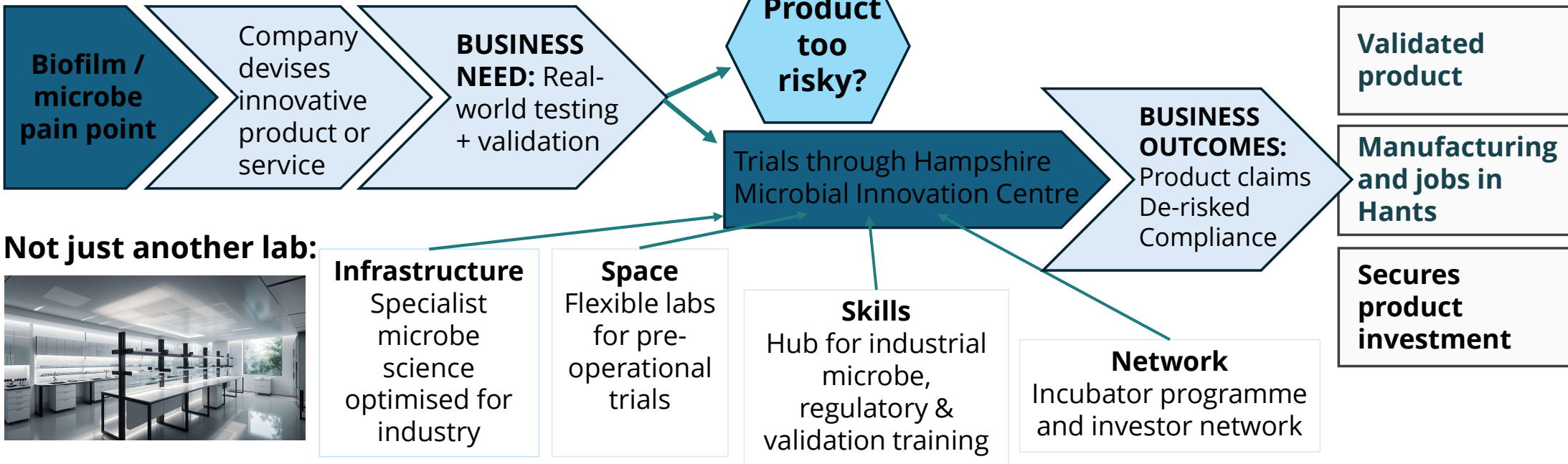
HEALTH HAZARD 'Do not swim' warning for over 40 seaside hotspots in UK this weekend - check map of where to avoid near you

NEWS

Health board admits fatal infections probably caused by water system

From Start-up to Scale-up

Helping companies in Hampshire cross the 'Valley of Death'



Individual strengths: nationally **unique**



National Biofilms
Innovation Centre

Created to nucleate new industries >£1 Bn
Only international centre of its kind
£204m impact (13:1 ROI)
5 spin-outs, >100 new jobs



UK Health
Security
Agency

Expertise in microbial safety
High-containment microbiology labs
Therapeutic evaluation
National-Level Health Security Science

Nationally
unique facility



UNIVERSITY OF
SOUTHAMPTON
SCIENCE PARK

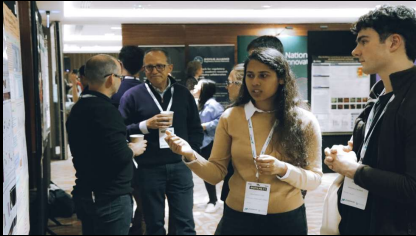
SETsquared: Global #1 university incubator
Catalyst Centre & Incubation Centre
100+ companies on site (15% UoS spin-outs)
Investor networks



University of
Southampton

Global top 100
2nd in the UK for enterprise creation
Leading Research-intensive university
9th in the UK for sustainability

HMIC – Economic and Regional Impact



Co-location accelerates
Innovation and collaboration



Access to talent and skills



Credibility and visibility for
funders



Facilities that enable real-
world impact

Economic and regional impact

- supporting local innovation economy (**25-40 validated innovations**)
- creating high-value jobs (**~300 jobs**)
- attracting companies and investment (**+250 companies/£5-10m private investment**)
- strengthening the region's reputation as a science and tech leader



GoSouthCoast
Part of **GoAhead**

Securing the future of the New Forest Tour

Presentation to LEP Legacy Funds Panel

06/02/2026



Strategic picture

The New Forest National Park

- One of the UK's most visited National Parks: **16m day visits/year**
- Highly protected and valuable landscape- Hampshire / nationally / internationally
- Peak season traffic impacts- proven solution: high-quality, car-free visitor transport



Strategic picture

Go South Coast

- Existing fleet now end of life after 20 years' intensive use
- Developing workforce and transition of depot to electric operation
- Long-term commitment to Lymington and New Forest routes with connections to Southampton



The Tour and the visitor economy

- 40,000+ passengers per season, strong repeat use
- Drives footfall, dwell time and spend for local businesses (£500k+ per annum)
- Clear support from Businesses (including sponsorship), Go New Forest, NFDC and HCC Passenger Transport Group



What the funds will deliver

- 3 electric open-top buses and charging infrastructure
- Year-round operation funded through operator revenue: New Forest Tour and off season Bluestar 6 service
- Reliable, accessible fleet for 10+ years – the batteries are guaranteed for 14 years



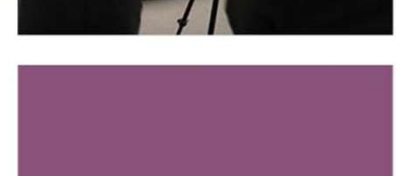
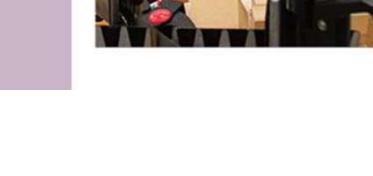
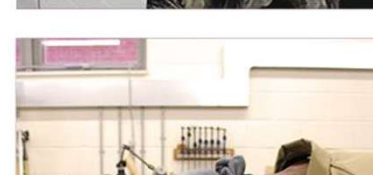
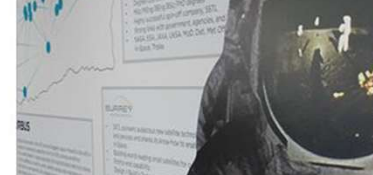
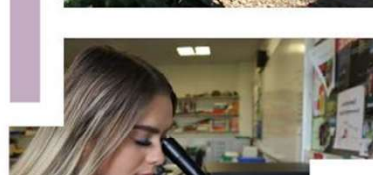
ALTON ADULT LEARNING HUB: BRIDGING THE SKILLS GAP FOR THE OVER-50S

CAPITAL FUNDING PROPOSAL – LEP LEGACY RESERVES

Presented by:

SUKI DHESI, Deputy Principal

ASHLEY GRUTE, Assistant Principal



THE CHALLENGE & OPPORTUNITY



THE PROBLEM:

Alton has high out-commuting (10,000+ daily) and low job density (0.67). This drains local talent and leaves SMEs struggling.



THE OPPORTUNITY:

85% of local benefit claimants are over 50. This is an experienced but "digitally distanced" workforce.



THE VISION:

Establish an Adult Education Hub at Alton College in IS-8 Sectors: Digital Manufacturing and Social Care to repurpose this talent.



ALIGNMENT:

Directly supports the East Hampshire Regeneration & Economy Strategy 2024–29.



THE 'PROFESSIONAL EXCHANGE' & INFRASTRUCTURE



CAPITAL INVESTMENT (£180K)

Refurbishment of underutilised college space into industry-standard environments.



TECHNICAL SUITE:

Procurement of Industry 4.0 tech—CNC machinery, 3D printing/CAD stations, and replicate a care setting.



OUTCOME:

A high-spec hub learning skills on the equipment actually used by local manufacturers like Amery Engineering and PelGar International, and care providers.

CURRICULUM & DELIVERY MODEL

MICRO-CREDENTIALS (4–6 WEEKS) RAPID, INTENSIVE UPSKILLING IN:

- Digital Manufacturing: CAD/CAM and automated production.
- Modern Logistics: Inventory tech and supply chain management.
- Social Care: Digital records and modern care standards.

THE 'HUB' CONCEPT:

Beyond training, it offers a 'Professional Exchange' for networking, mentoring, and direct interviews with 20+ partner employers



IMPACT & ECONOMIC ROI



TARGET

150+ residents engaged; 120+ credentials awarded; 90+ direct job outcomes annually.

ESTIMATING CORE BENEFITS

- **Increased Local Spending:** Retaining workers in Alton boosts the local high street.
- **Business Resilience:** Solving the 'hard-to-fill' vacancy crisis for local SMEs.
- **Social Value:** Reducing long-term economic inactivity and improving wellbeing for the over-50 demographic.

TECH+TOUR

GET ON BOARD WITH YOUR FUTURE

HAMPSHIRE ROLLOUT

POWERED BY



www.get-on-board.co.uk

The Project - Tech+Tour Hampshire Rollout

- Countywide scaling of an existing, highly successful model – not testing a concept.
- Expand Delivery Partners and wider collaborators to ensure long-term sustainability and greatest impact.
- Purchase of a second vehicle to mitigate current project capacity concerns (c.90%) and provide opportunities with measurable impact across Hampshire and beyond the Solent.
- Secure ultramodern industry-lead innovative technology to showcase direct to the county's future workforce.
- Promote career pathways in LSIP identified priority sectors and IS-8 industries through guided practical learning programmes and showcasing industry innovation.
- Raise aspirations and awareness of priority sector-relevant skills and address persistent workforce shortages across Hampshire.
- Hyperlocal focus agility and engagement with NEETs, women in engineering and EDI.



The Need – why intervention is required

- **5.1% urban growth & aging population** (+11% 65-74s by 2029) and a shrinking work-age cohort
- **£72bn GVA annually**, driving UK competitiveness.
- **Persistent skills shortages** in priority and growth sectors (perceptual aspiration challenges as well as awareness).
- **Uneven access** to careers and technical education – rural areas, smaller towns and pockets of deprivation face reduced access to employer engagement, technical facilities and career inspiration. Tech+Tour offers **place-based interventions** (Mainstream, home-Ed and NEETs)
- **High-deprivation and rural communities underserved** – existing project cannot facilitate equitable usage beyond the Solent, a second vehicle is needed for the Hampshire Rollout.
- **Strategic requirement for scalable, collaborative solutions** – Tech+Tour Rollout will be a shared infrastructure that reduces duplication and increases reach.



What We Will Deliver – Outputs & Impact

- A **centrally managed, two-vehicle, fully operational Tech+Tour fleet** with ultramodern immersive, industry-led practical workshops featuring technology such as Augmented & Virtual Reality, simulators, 3D printing and robotics.
- This **simultaneous multi district delivery** will focus on hyperlocal needs within LSIP and IS-8 priority sectors and will target **schools, NEET groups, community groups** to promote career pathways within those industries whilst also targeting **employers** to provide opportunities for **collaboration, business support** and **upskilling** opportunities.
- High-value **innovative technical experiences** directly to future workforces in their communities – **removing travel, cost and confidence barriers**.
- **Progression in to priority pathways** – sustained employment and participation - Number and proportion of participants progressing into FE, HE, apprenticeships or employment aligned to LSIP priority sectors
- **Engagement of NEETs and Economically Inactive residence** - Number of NEET and economically inactive residents engaged, with tracked re-engagement into learning, training or work
- **Employer engagement & skills pipeline strengthening** - Number of employers actively engaged in delivery, co-design or workforce development activity through Tech+Tour
- **Access and coverage across Hampshire** - Geographic coverage and number of high-deprivation or underserved communities reached

In 2025, **95% of Tech+Tour visitors found our workshops educational** and helpful with **70% now considering a career path within one of our focused industries**. Workshop impact also shows that the number of visitors who had confident knowledge in our focused sectors **grew from 21% pre workshop to 46% after visiting Tech+Tour**.



Strategic Outcomes – What success looks like

- Delivery partner & wider collaborators growth
- Increased access to and continued development of www.MyCareers.uk
- Countywide, equitable access to skills and careers engagement
- Stronger alignment between employers, education and growth priorities
- Clear progression pathways into priority sectors
- Reduced duplication through shared, collaborative infrastructure
- A sustainable, evidence-led skills asset for Hampshire
- An inspired future workforce

"success is not just higher engagement, but a more coherent, accessible, efficient and agile skills system that supports Hampshire's growth priorities over time"



www.get-on-board.co.uk

TECH+TOUR

GET ON BOARD WITH YOUR FUTURE