

## 2021 Census headlines

- Hampshire had a census population of 1,400,900, an increase of 83,000 persons (6.3%) since 2011.
- Test Valley saw the greatest population growth over the decade (12.1%) while Gosport (-0.8%), and New Forest (-0.4%) saw population decreases.
- Hampshire's population continues to age with 21.7% of the population aged 65+.
- There were 587,700 households in Hampshire, an increase of 42,400 (7.8%) since 2011.
- All Districts had response rates of 98% or higher.

The Census was carried out on 21 March 2021. This summary profile was created using the first release of statistics from the 2011 Census for England and Wales published on 28th June 2022.

## Population Growth 2011 to 2021

Hampshire's population has grown by 6.3% to 1,400,900 since the 2011 Census, this is the same rate at which the population of England and Wales grew. Population in nine of the eleven Districts within Hampshire increased over the ten-year period, with two increasing by more than 10% - Test Valley (12.1%) and Basingstoke and Deane (10.4%). Gosport and New Forest were two of the few places in the country to see a decrease in population since 2011. Gosport population fell by 0.8% and New Forest by 0.4%.

Figure 1: Percentage population change 2011 to 2021

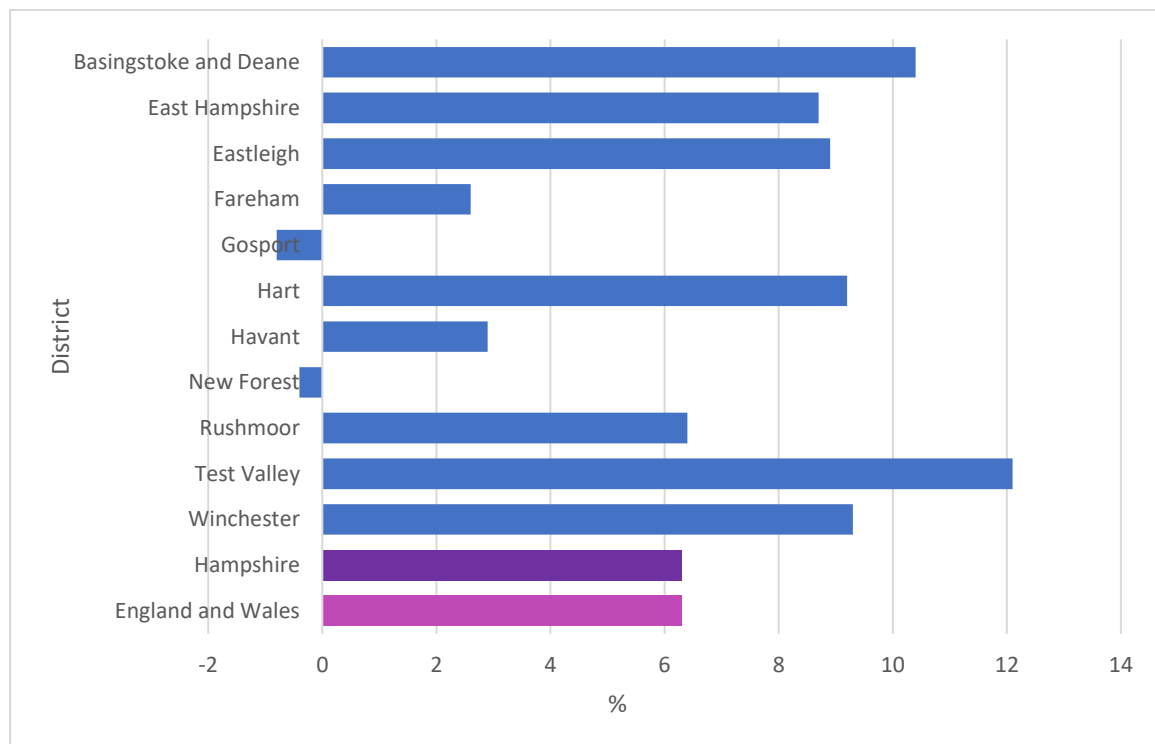
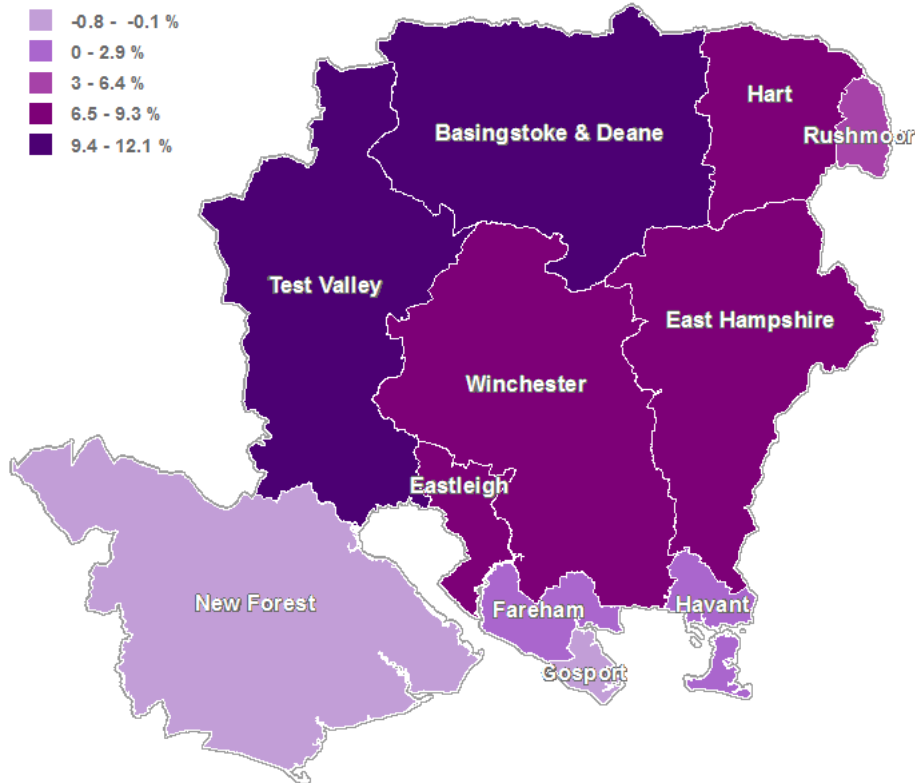


Figure 2: Map showing percentage population change in Hampshire Districts 2011 to 2021



### Age structure

Over the decade from 2011 population growth has been concentrated in the older ages, confirming that Hampshire has an ageing population. Figure 3 illustrates there were fewer 0-to-4-year-olds, 15- to 24-year-olds and 40- to 49-year-olds in 2021 than in 2011, but all other age groups saw an increase in numbers. In Hampshire, the highest number of people were found in the 50 to 59 age range which will include those born towards the end of the 1960's baby boom.

Figure 3: Population change 2011 to 2021 (numbers)

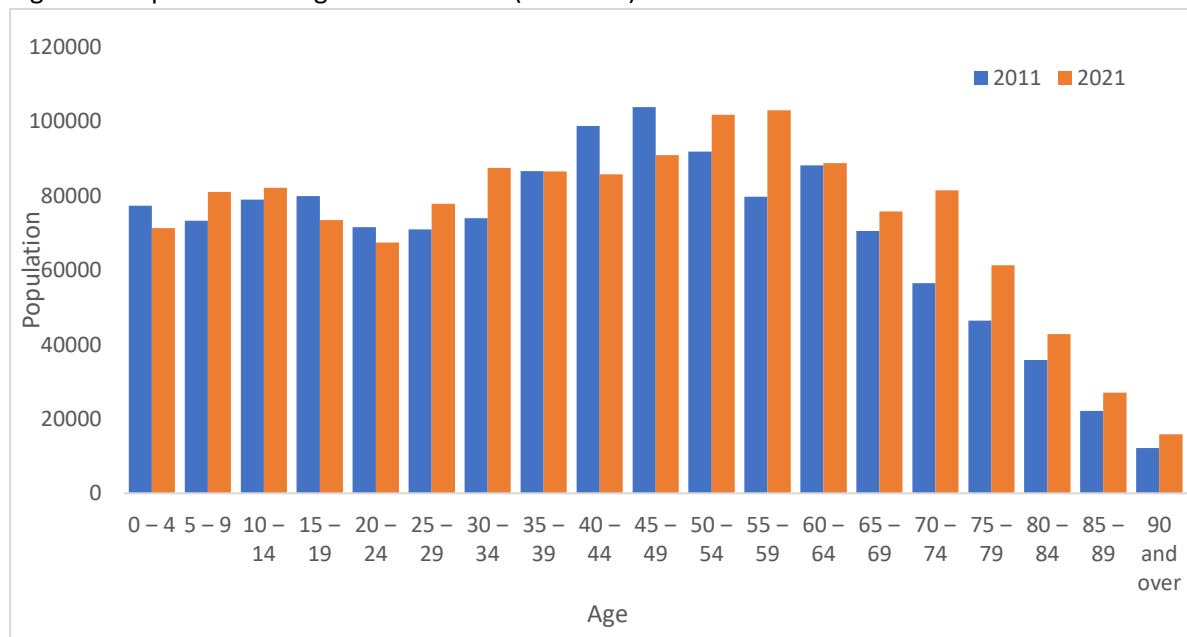
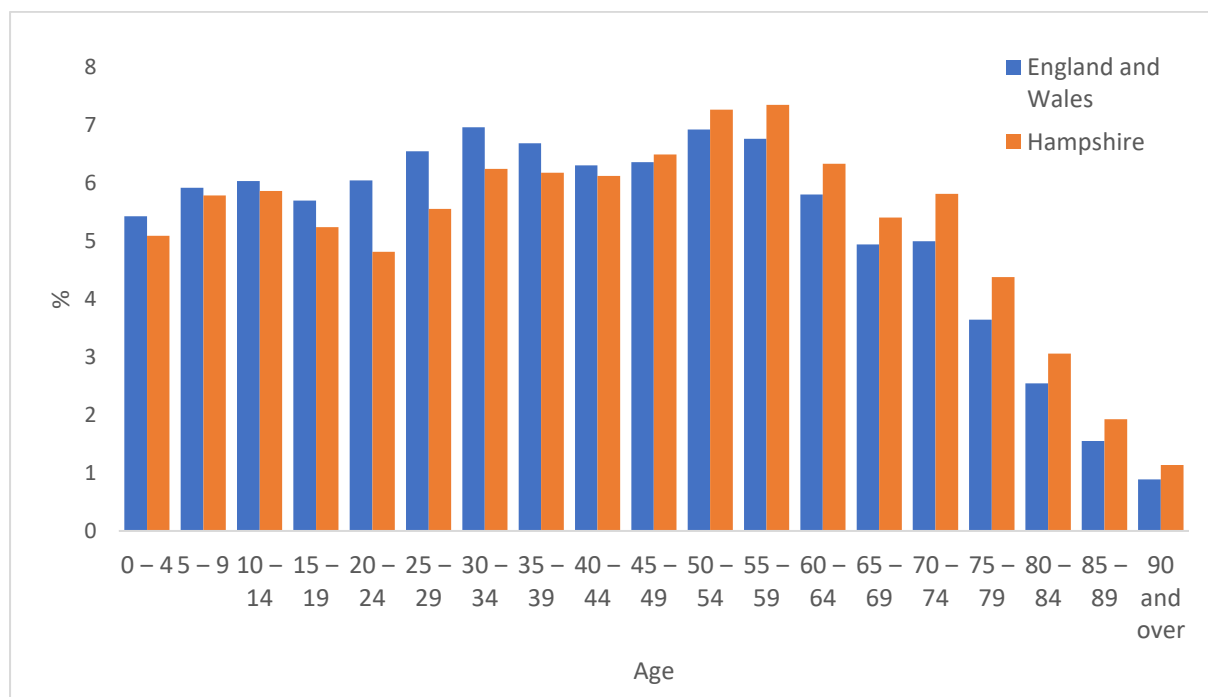


Figure 4 shows the population by age in both Hampshire and in England and Wales. This illustrates the ageing population in Hampshire and the lower proportions of young people within the county when compared to the rest of the country.

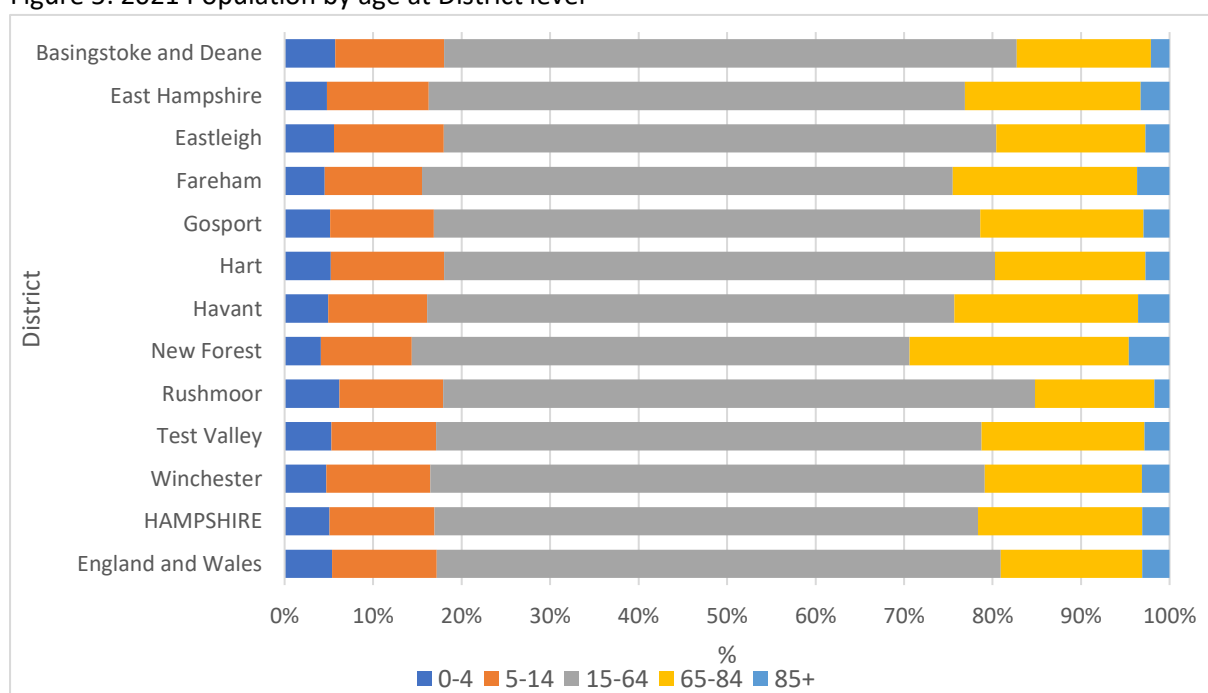
Figure 4: 2021 Population by age and location



### Age structure in the Districts

Figure 5 shows the age breakdown of the Districts within Hampshire. Rushmoor has the highest proportion of 0- to 4-year-olds, (6.2% compared to 5.1% in Hampshire), as well as the highest percentage of people in the 15 to 64 age group (67.0%). New Forest has the highest proportion of the population aged 85+ (4.6%), as well as the smallest working age population (56.2%).

Figure 5: 2021 Population by age at District level



## Dependency Ratios

Changes in the age distribution of Hampshire are represented by the dependency ratios in the table below. A dependency ratio represents the ratio of the non-working age population to those who are of working age. It identifies the number of non-working age individuals per 100 of working age.

Table 1 shows the total dependency ratio increased between 2011 and 2021 showing a higher level of overall dependence on working age individuals in the population. The child dependency ratio has decreased across the period, whereas the old age dependency ratio has increased, indicating once again the issue of ageing in the county and the increasing number of individuals of pensionable age per working age population.

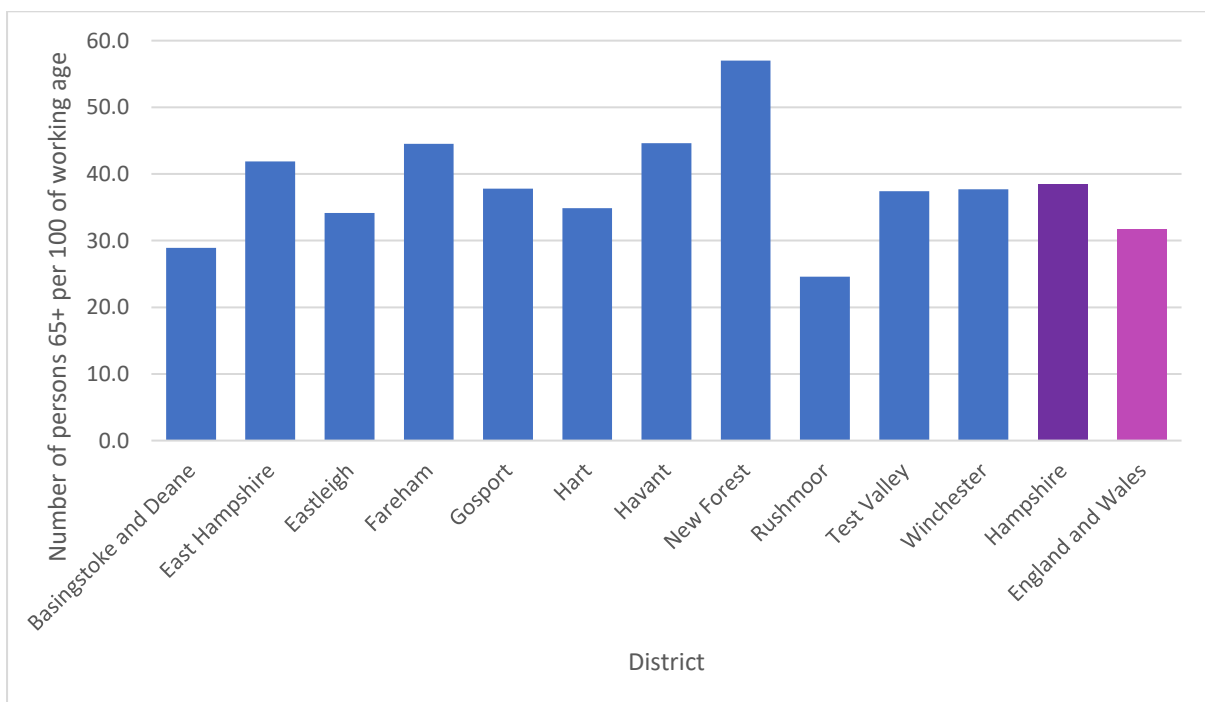
Table 1: Dependency ratios 2011 and 2021

	Total Dependency Ratio	Child Dependency Ratio	Old Age Dependency Ratio
<b>2011</b>	72.3	40.4	31.8
<b>2021</b>	77.6	39.0	38.5

The Total Dependency Ratio is the ratio of children (0-19) and those of state pensionable age (65+) to the working age population (20-64 years). The Child Dependency Ratio is the ratio of the population aged (0-19) years to the working aged population (20-64). The Old Age Dependency Ratio is the population aged (65+) against the working age population (20-64).

Figure 6 shows the Old Age Dependency ratio across the Districts. As expected, New Forest has the highest Old Age Dependency ratio with 57 people aged 65+ for every 100 people of working age. However, East Hampshire, Fareham and Havant also have fairly high rates with over 40 people aged 65+ per 100 working age people. Rushmoor has the lowest ratio at 25 people per 100 people of working age.

Figure 6: Old Age Dependency, 2021 by District



## Population density

Hampshire's population density of 381 persons per square kilometre is similar to England Wales where there were 395 persons per square kilometre. The map and graph below show the spread of population across the county.

Figure 7: Map of population density 2021, persons per square kilometre

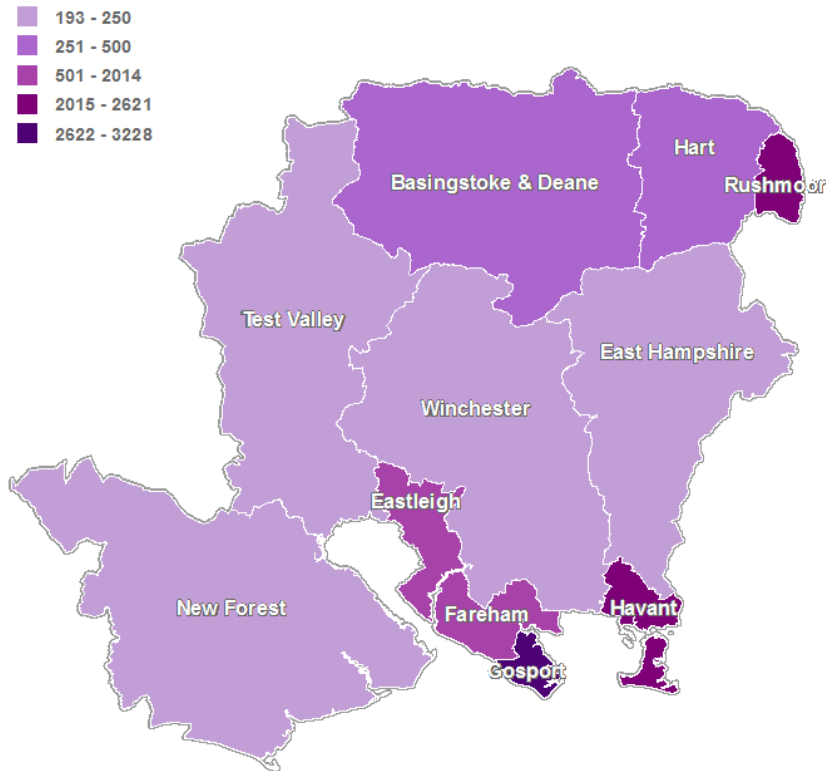
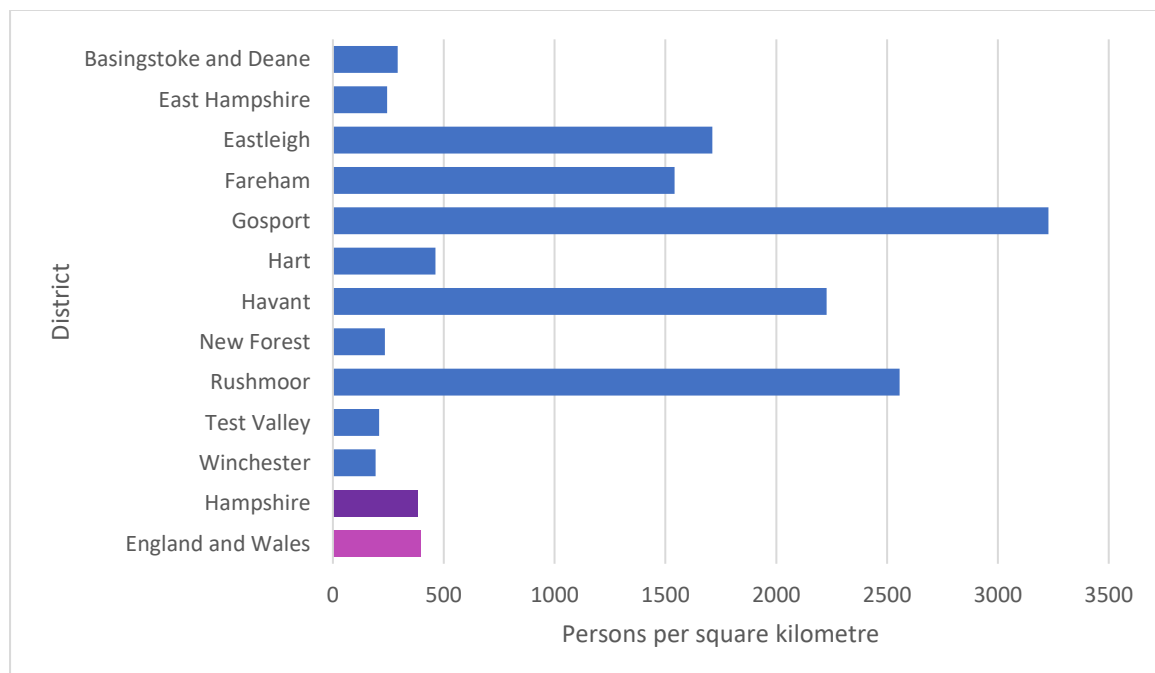


Figure 8: Population density 2021, persons per square kilometre by District



Gosport was the most densely population District with 3,228 people per square kilometre, whereas Winchester was the least densely populated with just 193 people per square kilometre.

### Households

The number of households in Hampshire grew over the decade from 2011 by 7.8%, whereas growth in the number of households in England and Wales was lower at 6.1%. All Hampshire districts had growth in the number of households ranging from 1% in New Forest to 14.9% in Test Valley.

Figure 9: Percentage change in households 2011 to 2021

