

Proposed catchment changes for Fleet Infant School and Velmead Junior School.

Hampshire County Council is proposing changes to the catchment areas of Fleet Infant School and Velmead Junior School to take account of the planned new housing development at Hartland Village, Fleet, alongside the new primary school at Hartland Village which is due to open in September 2027.

The current position:

The housing development and some existing houses located in the vicinity of the development, are both currently served by Fleet Infant School and Velmead Junior School.

The proposal:

That this new development, plus some existing houses located in the vicinity of the development, will form the catchment area for the new primary school, which will be opening on the Hartland Village development in September 2027.

This means a part of the existing catchment areas for Fleet Infant School and Velmead Junior School, as shown on the map below will be removed as it will become the new catchment area for the new school and children living in the housing detailed on the plan will not have catchment priority at these schools.

As the new primary school will be an academy, the proposed catchment, will ultimately need to be determined by the trust board of the academy sponsor.

Admission arrangements:

To mitigate the impact of the proposed catchment changes on any families living in the affected area with children already in the schools, Hampshire County Council is also proposing the following transitional arrangements for inclusion (as a School Specific Criterion) in the admission policies of the schools:

Transitional arrangement for admission to Fleet Infant School

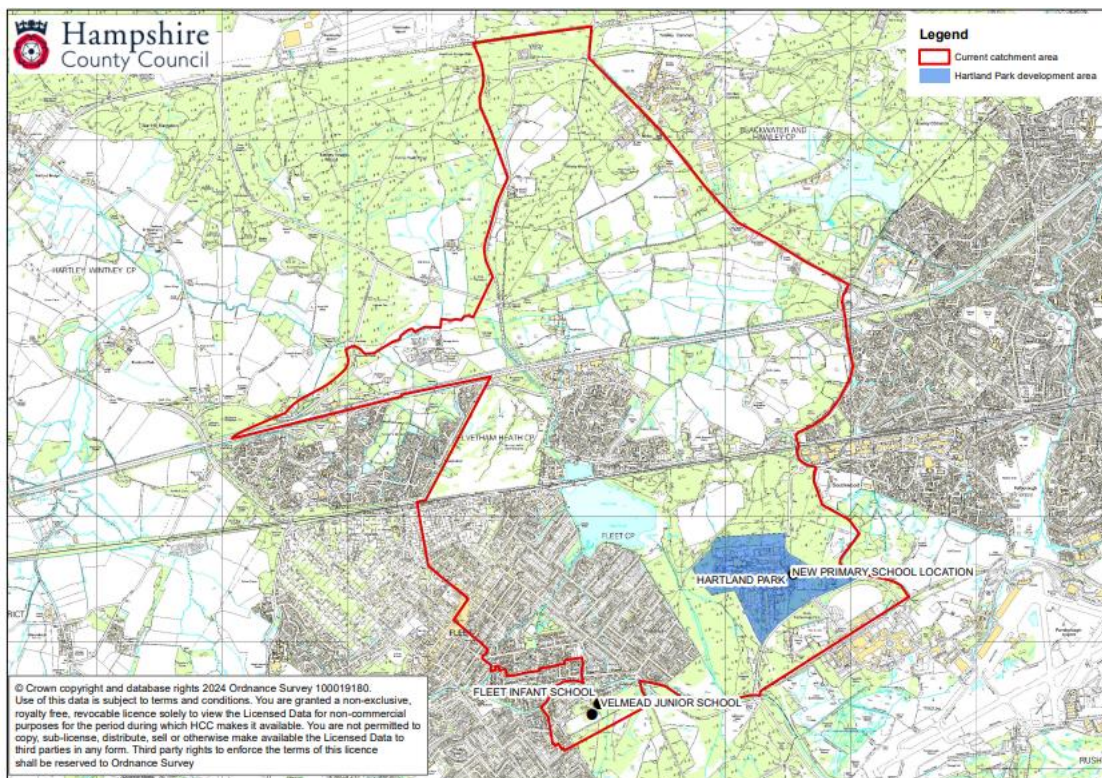
Out-catchment children starting school for the first time, living in the portion of land which was previously in the catchment area for Fleet Infant School before it changed in September 2027, and have a sibling on roll at Fleet Infant School or Velmead Junior School (who was on roll and living at the same address prior to the catchment change and will still be on roll at the time of the other child's admission), will be given catchment, sibling priority for Fleet Infant School, for up to and including admission in September 2030.

Transitional arrangement for Velmead Junior School

Out-catchment children starting junior school for the first time, living in the portion of land which was previously in the catchment area for Velmead Junior School before it changed in September 2027, and have a sibling on roll at Fleet Infant School or Velmead Junior School (who was on roll and living at the same address prior to the catchment change and will still be on roll at the time of the other child's admission), will be given catchment, sibling priority for Velmead Junior School, for up to and including admission in September 2030.

It is therefore proposed that the catchment boundary be redrawn for school admissions from September 2027 onwards (this includes those children making applications as part of the main round for year R and Year 3 for September 2027).

CURRENT CATCHMENT AREA



PROPOSED CATCHMENT AREA

