

## **Catchment changes for The Henry Cort Community College, Brookfield Community School, Sarisbury Infant School, Sarisbury CE Junior School and Whiteley Primary School.**

Hampshire County Council has agreed changes to the catchment areas of The Henry Cort Community College, Brookfield Community School, Sarisbury Infant School, Sarisbury CE Junior School and Whiteley Primary School, following the decision to relocate The Henry Cort Community College to the new site at North Whiteley from September 2027, and taking into account the construction of a housing development to be sited opposite Cornerstone CE Primary School.

### **Current position**

The Henry Cort Community College catchment area currently includes parts of Fareham, as well as the whole of Whiteley.

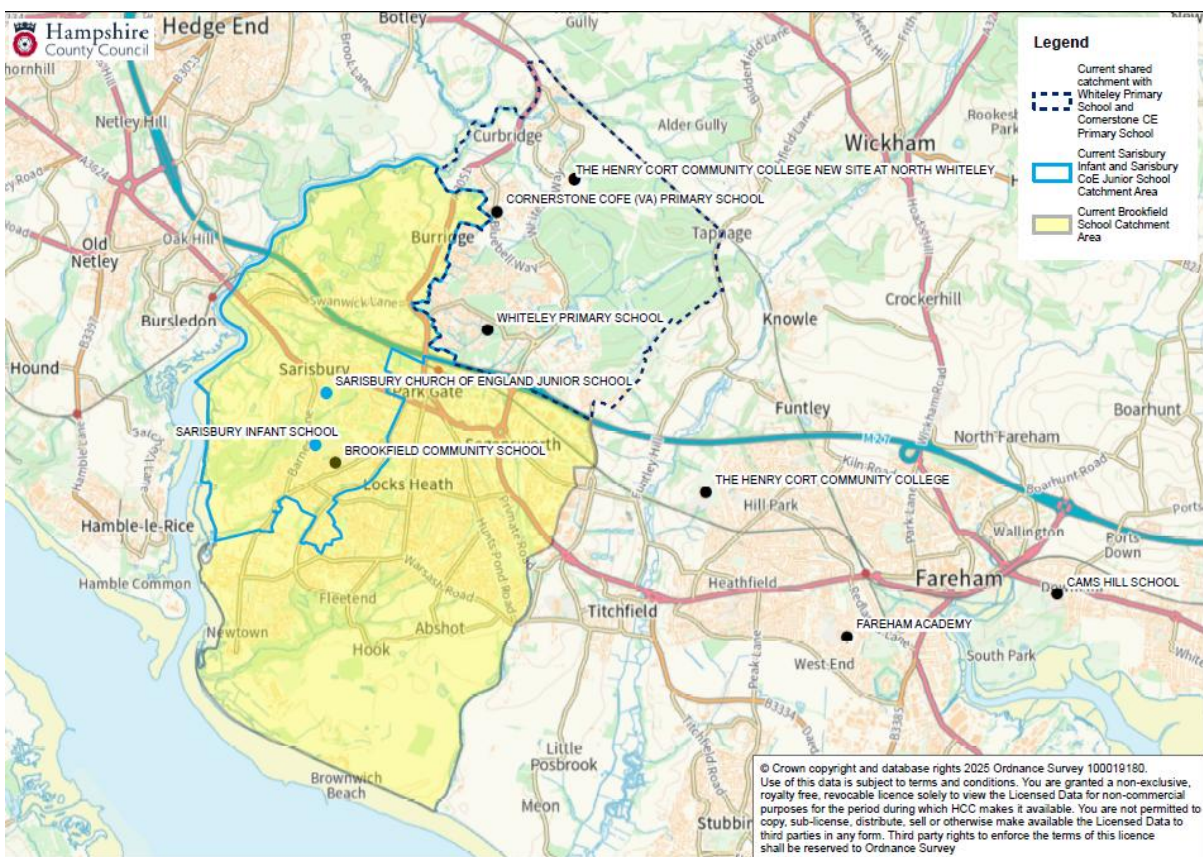
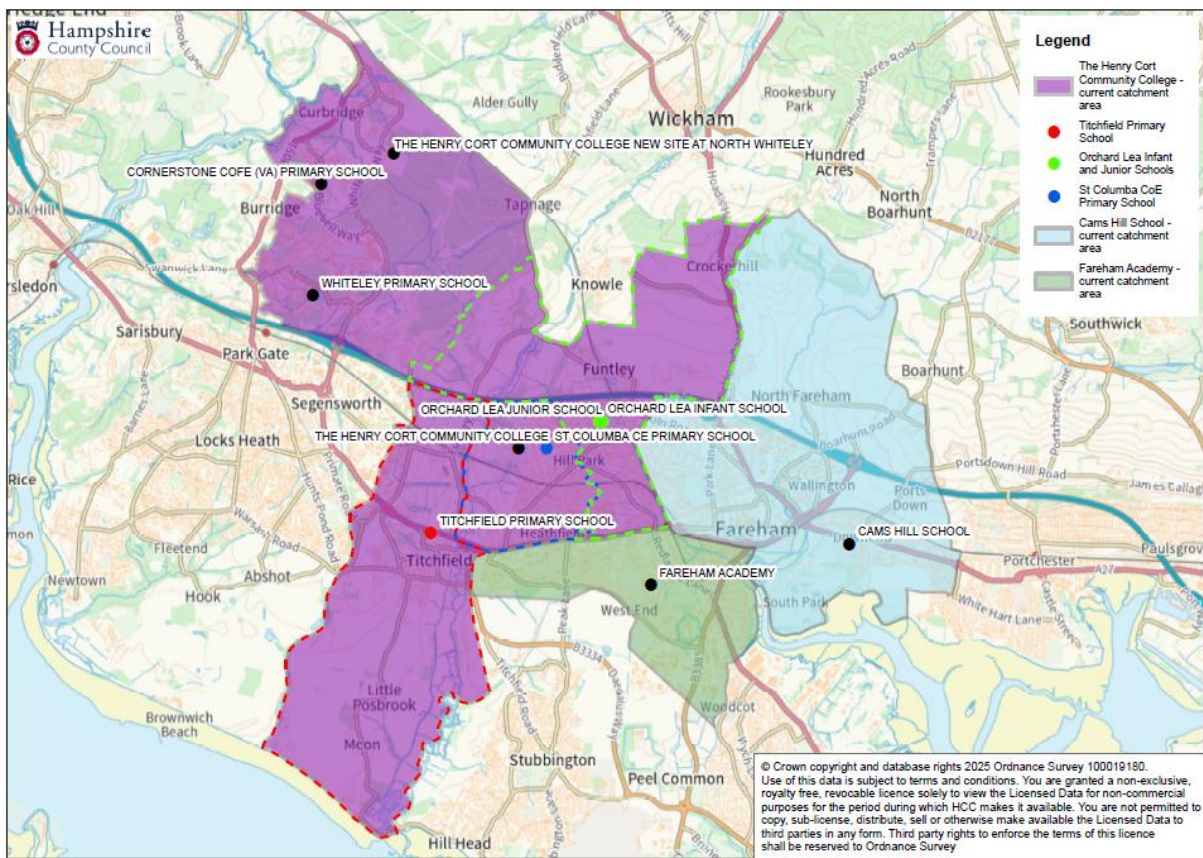
The housing development to be sited opposite Cornerstone CE Primary School, together with some existing homes, are currently served by Sarisbury Infant School, Sarisbury CE Junior School and Brookfield Community School.

### **Determined changes**

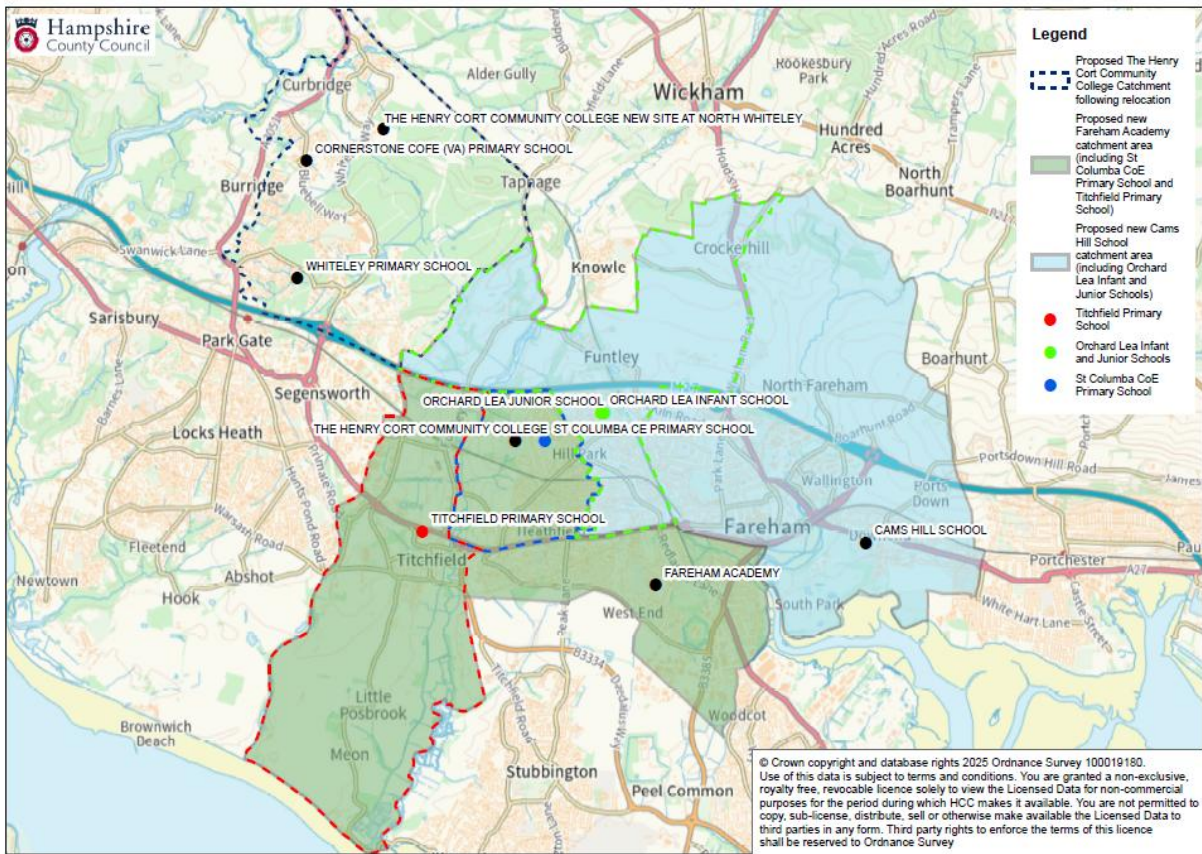
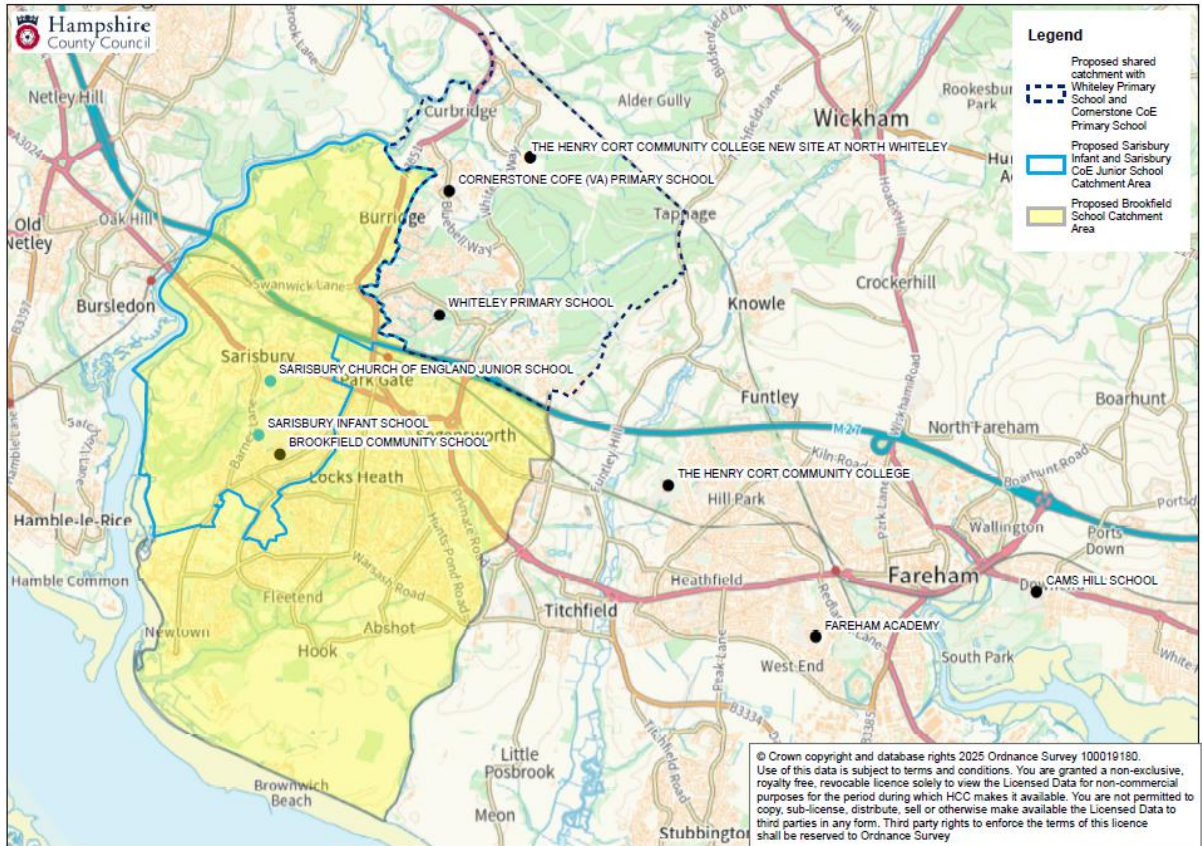
A consistent catchment will be created for the Whiteley area so that primary aged children are in a shared catchment area for Cornerstone CE Primary School and Whiteley Primary School, and that secondary aged children are in a single Whiteley catchment area for The Henry Cort Community College.

As such, the housing and land shown on the map will be removed from the catchment areas of The Henry Cort Community College, Brookfield Community School, Sarisbury Infant School and Sarisbury CE Junior School from September 2027. Additionally, the small portion of land opposite Cornerstone CE Primary School will be included within the catchment areas of Whiteley Primary School and The Henry Cort Community College.

# CURRENT CATCHMENT AREAS



# CATCHMENT AREAS FROM SEPTEMBER 2027



To mitigate the impact of these changes on families living in the affected areas who have children already attending the schools, the following transitional arrangements are included as school specific criteria in their 2027 admission policies:

### ***Transitional arrangement for admission to The Henry Cort Community College***

*Out-catchment children starting secondary school for the first time, living in the parts of Fareham which were previously in the catchment area for The Henry Cort Community College before it changed in September 2027, and have a sibling on roll at The Henry Cort Community College (who was on roll and living at the same address prior to the catchment change and will still be on roll at the time of the other child's admission), will be given catchment, sibling priority at The Henry Cort Community College, for up to and including admission in September 2030.*

### ***Transitional arrangement for Brookfield Community School***

*Out-catchment children starting secondary school for the first time, living in the portion of land opposite Cornerstone CE Primary School which was previously in the catchment area for Brookfield School before it changed in September 2027, and have a sibling on roll at Brookfield Community School (who was on roll and living at the same address prior to the catchment change and will still be on roll at the time of the other child's admission), will be given catchment, sibling priority at Brookfield Community School, for up to and including admission in September 2030.*

### ***Transitional arrangement for Sarisbury Infant School***

*Out-catchment children starting school for the first time, living in the portion of land opposite Cornerstone CE Primary School which was previously in the catchment area for Sarisbury Infant School before it changed in September 2027, and have a sibling on roll at Sarisbury Infant School or Sarisbury CE Junior School (who was on roll and living at the same address prior to the catchment change and will still be on roll at the time of the other child's admission), will be given catchment, sibling priority for Sarisbury Infant School, for up to and including admission in September 2030.*

### ***Transitional arrangement for Sarisbury CE Junior School***

*Out-catchment children starting junior school for the first time, living in the portion of land opposite Cornerstone CE Primary School which was previously in the catchment area for Sarisbury CE Junior School before it changed in September 2027, and have a sibling on roll at Sarisbury Infant School or Sarisbury CE Junior School (who was on roll and living at the same address prior to the catchment change and will still be on roll at the time of the other child's admission), will be given catchment, sibling priority for Sarisbury CE Junior School, for up to and including admission in September 2030.*