

Catchment changes for Fleet Infant School and Velmead Junior School

Hampshire County Council has approved changes to the catchment areas of Fleet Infant School and Velmead Junior School to take account of a new housing development at Hartland Village, Fleet (approximately 1500 new dwellings) and the new primary school being built there which opens in September 2027

Current position

The new housing development and some existing properties located in the vicinity of the development, are currently served by Fleet Infant School and Velmead Junior School.

The new primary school will open in September 2027. It will admit up to 30 pupils into Year R (age 4+) in its first year and will grow over time to accommodate up to 60 pupils per year group, with a total capacity of 420 pupils, in line with expected local demand.

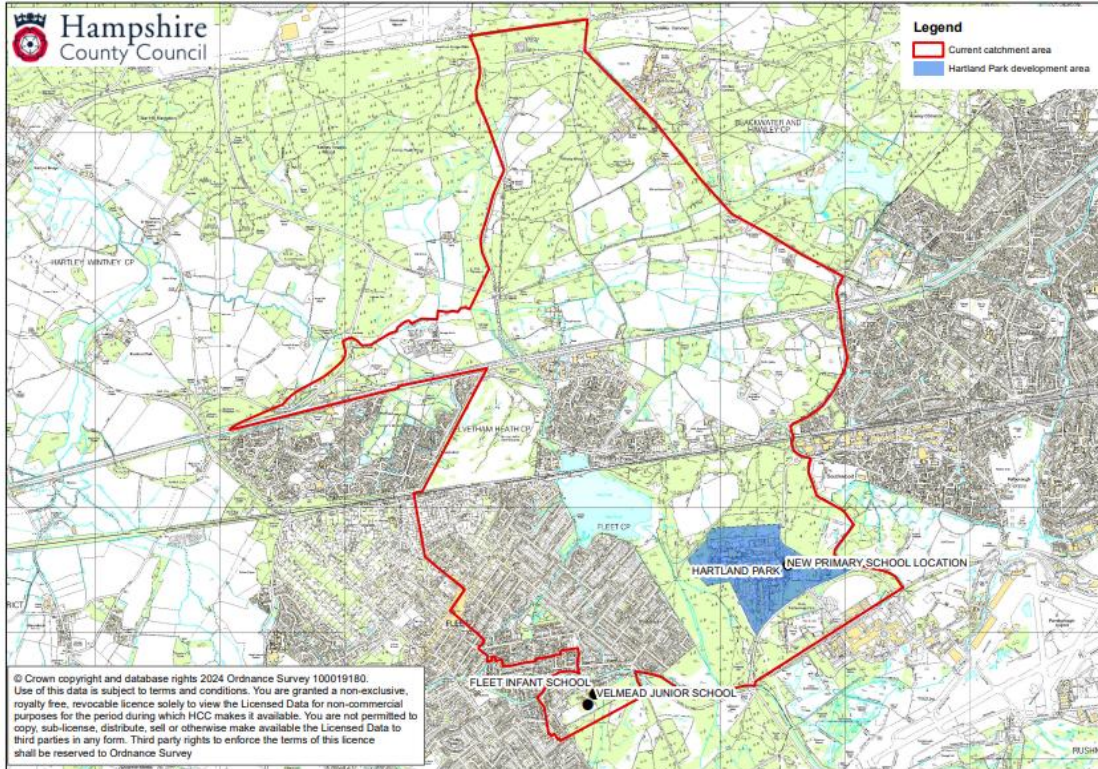
Determined changes

From September 2027, the Hartland Village development, together with identified nearby existing properties, will form the catchment area of the new primary school. The new school is an Academy, and its catchment area has been agreed between The Circle Trust, the Academy Sponsor and Hampshire County Council but will need to formally be determined by the trust board of Trust as the admission authority for the school.

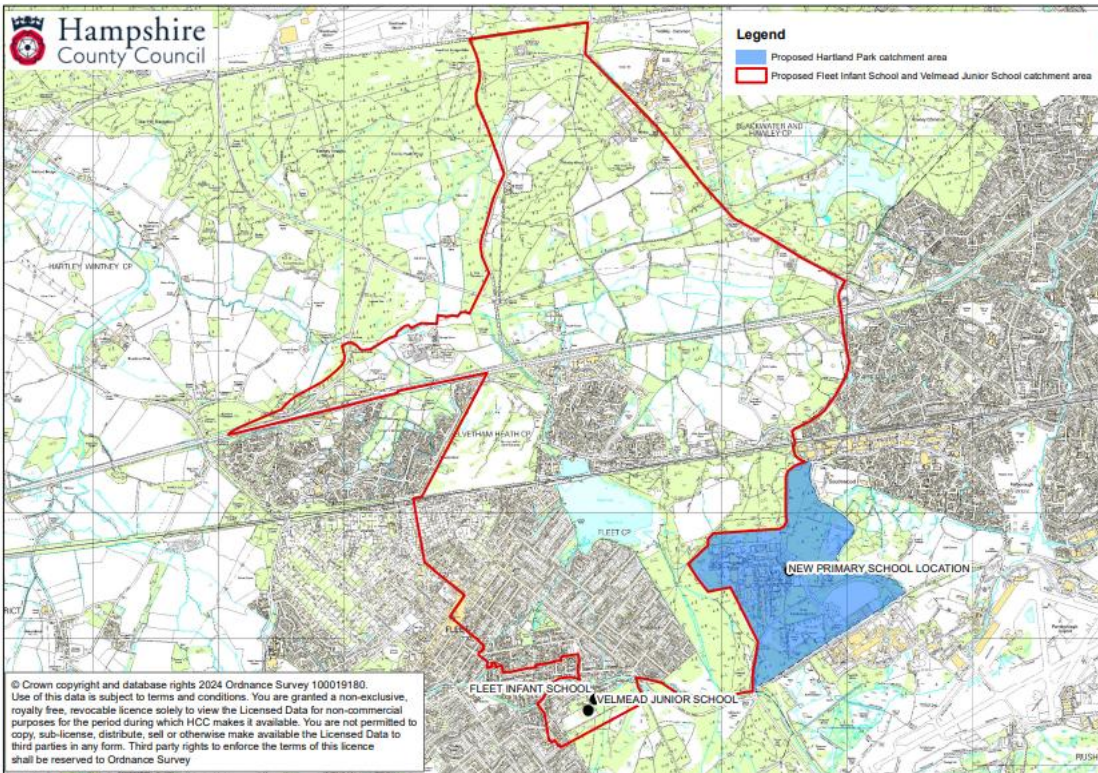
Accordingly, the catchment boundary for Fleet Infant School and Velmead Junior School has been redrawn to remove the area now served by the new Hartland Village Primary school, as shown in the maps below.

Children living within this revised area will no longer have catchment priority for Fleet Infant School or Velmead Junior School.

CURRENT CATCHMENT AREA



CATCHMENT AREA FROM SEPTEMBER 2027



To mitigate the impact of these changes on families living in the affected area who already have children attending the schools, the following transitional arrangements are included as school specific criteria in their 2027 admission policies:

Transitional arrangement for admission to Fleet Infant School

Out-catchment children starting school for the first time, living in the portion of land which was previously in the catchment area for Fleet Infant School before it changed in September 2027, and have a sibling on roll at Fleet Infant School or Velmead Junior School (who was on roll and living at the same address prior to the catchment change and will still be on roll at the time of the other child's admission), will be given catchment, sibling priority for Fleet Infant School, for up to and including admission in September 2030.

Transitional arrangement for Velmead Junior School

Out-catchment children starting junior school for the first time, living in the portion of land which was previously in the catchment area for Velmead Junior School before it changed in September 2027, and have a sibling on roll at Fleet Infant School or Velmead Junior School (who was on roll and living at the same address prior to the catchment change and will still be on roll at the time of the other child's admission), will be given catchment, sibling priority for Velmead Junior School, for up to and including admission in September 2030.