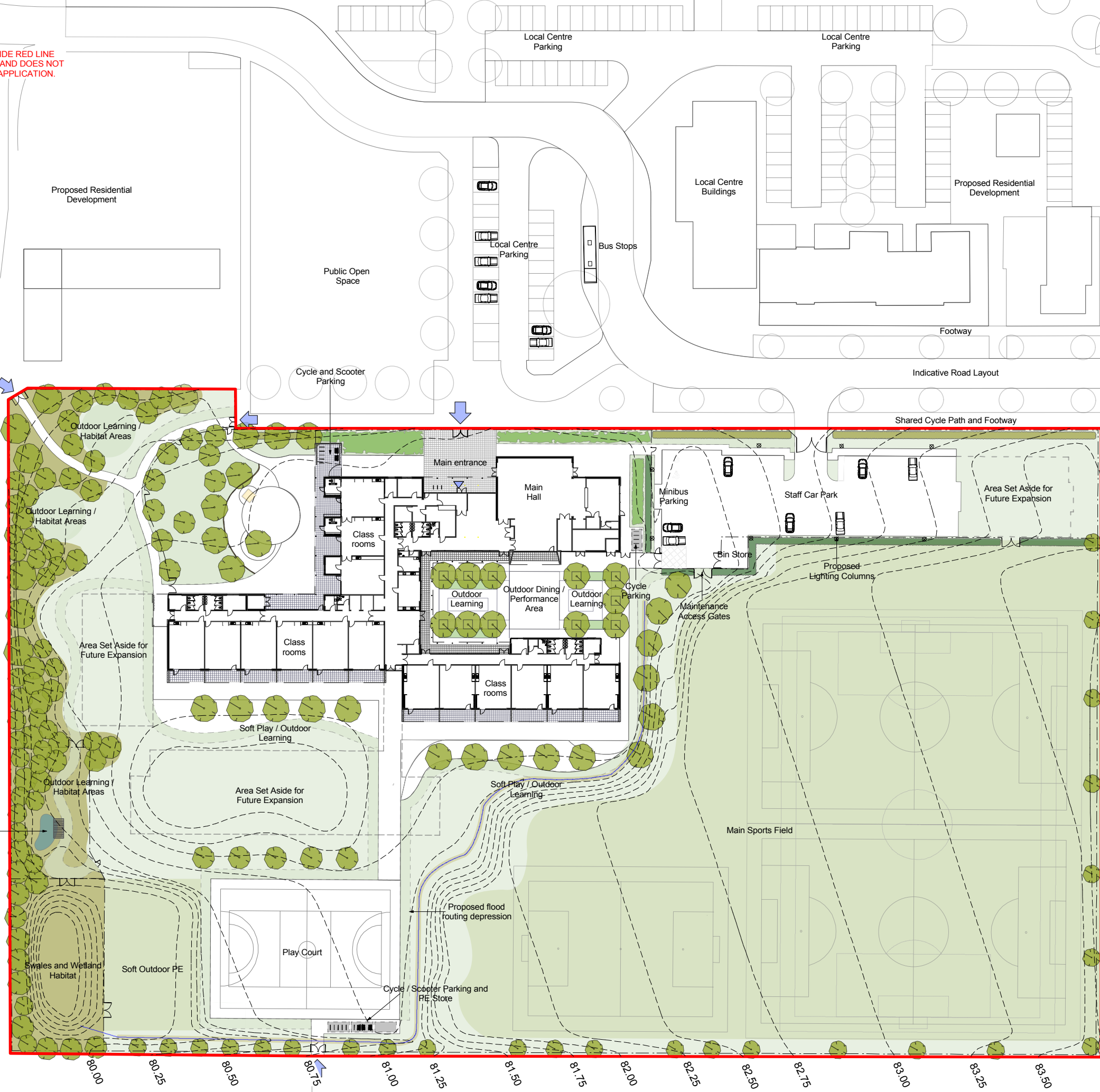


East Anton South Primary School

NOTE: ALL DEVELOPMENT OUTSIDE RED LINE BOUNDARY IS INDICATIVE ONLY AND DOES NOT FORM PART OF THIS PLANNING APPLICATION.



- Site Boundary
- Seeded Grass (PE / Formal) sports field areas
- Seeded Grass (Soft / Informal) areas
- Turfed Grass (Soft / Informal) areas
- Wildflower / meadow grass habitat
- Extra Heavy Standard - 14-16cm, rootballed and double staked.
- Heavy Standard - 12-14cm, rootballed and double staked.
- Select Standard - 10-12cm, rootballed and double staked.
- Carpinus sp. hedgerow planting - 800-1000mm instant hedge. 5 plants per linear metre.
- Mixed native species hedgerow planting - 800-1000mm instant hedge. 5 plants per linear metre.
- Mixed ornamental / sensory planting - 5 plants per sqm.

Note:

For hard landscape details refer to drawing P10294-L-72 Hard Landscape External Works Plan.

For fencing details refer to drawing P10294-L-74 Fencing Specification and Setting Out for details.

Trees to be native / ornamental species mix including, but not limited to, *Acer campestre*, *Corylus avellana*, *Crataegus monogyna*, *Quercus robur* and *Prunus avium*. Ref. HCC Ecology Appraisal (15.0324) October 2015.

Wildflower / Meadow grass habitat to include arable specialist plants where possible as mitigation for loss of habitat. Ref. HCC Ecology Appraisal (15.0324) October 2015.

Contours shown are indicative only and represent the Stage D cut and fill strategy FOR DEVELOPMENT.



PLANNING

Soft Landscape External Works Plan

1 : 800@ A3 1 : 400@ A1



P10294 L 73 A

November 2015
A Updated Contour Layout 22.01.15 GL