



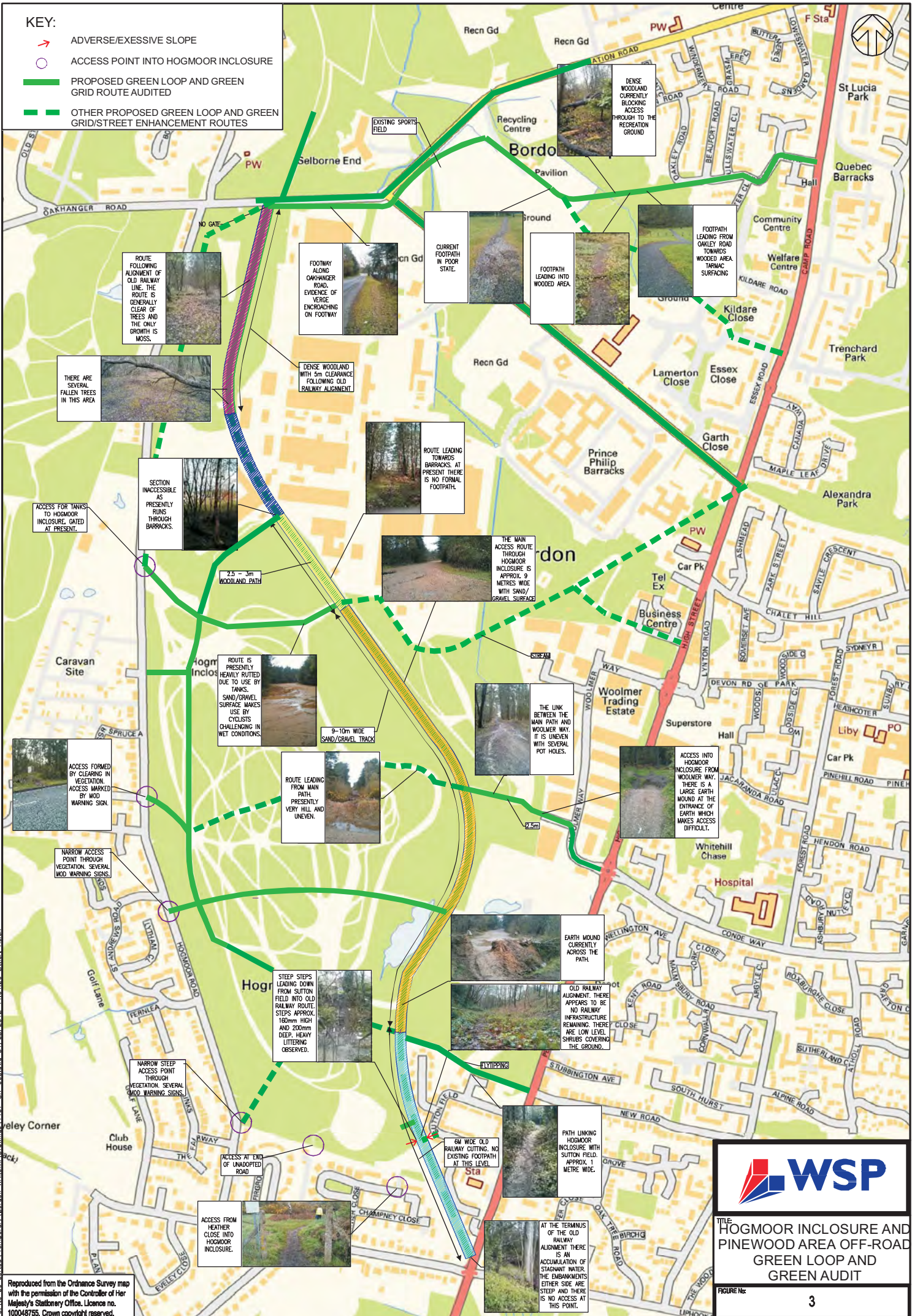



- KEY:**
-  ADVERSE/EXCESSIVE SLOPE
 -  ACCESS POINT INTO HOGMOOR INCLOSURE
 -  PROPOSED GREEN LOOP AND GREEN GRID ROUTE AUDITED
 -  OTHER PROPOSED GREEN LOOP AND GREEN GRID/STREET ENHANCEMENT ROUTES

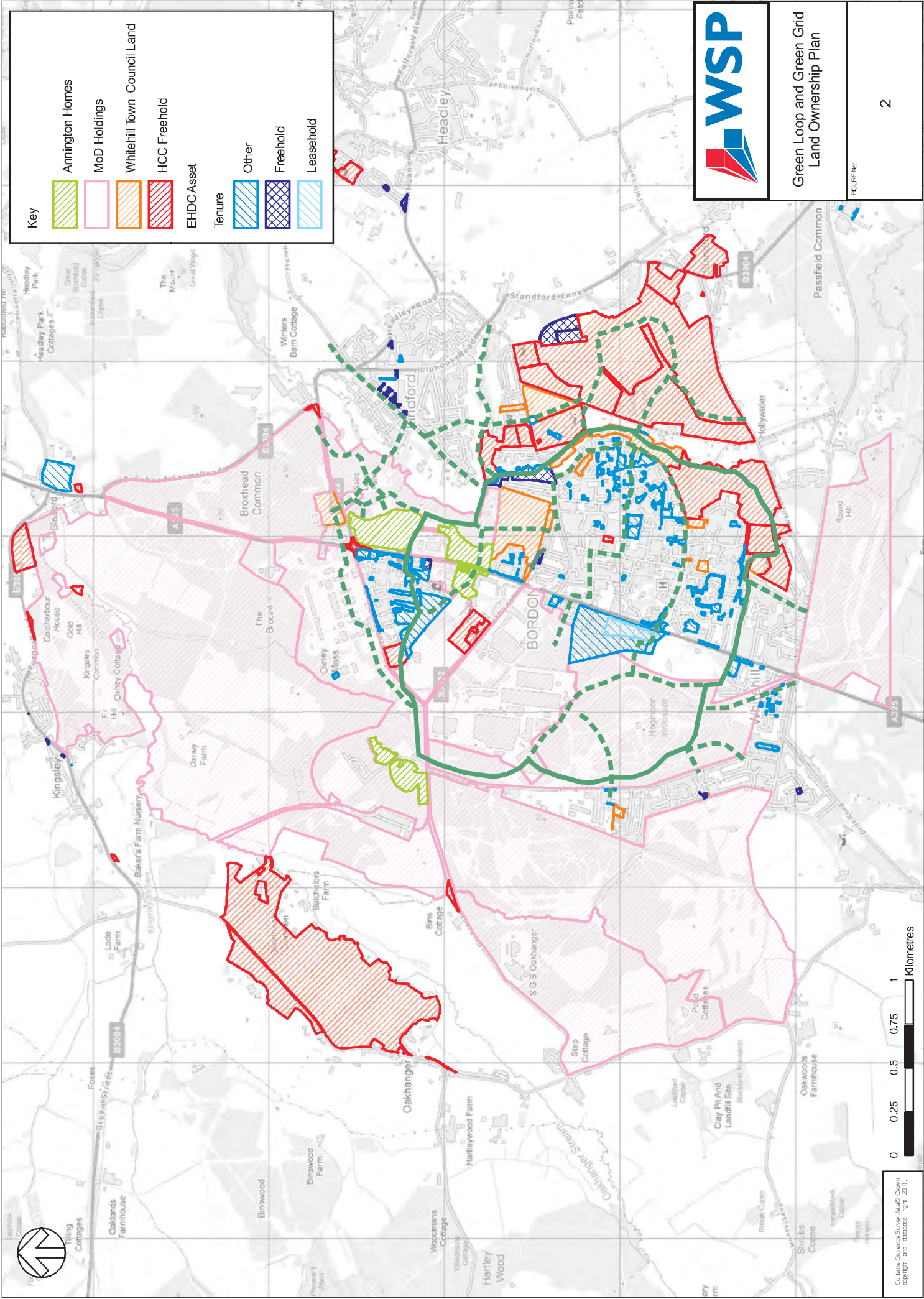
WSP

TITLE: HOGMOOR INCLOSURE AND PINEWOOD AREA OFF-ROAD GREEN LOOP AND GREEN AUDIT

FIGURE No: 3

C:\no...sopred\Tiamesara\Bordocan\Whitehill\Drawings\1407-SK-003.dwg 31/08/2012 14:04:28 Litter - Helen

Reproduced from the Ordnance Survey map with the permission of the Controller of Her Majesty's Stationary Office. Licence no. 100048755. Crown copyright reserved.



Key

	Amrington Homes
	MoD Holdings
	Whitehill Town Council Land
	HCC Freehold
	EHDC Asset
Tenure	
	Other
	Freehold
	Leasehold



Green Loop and Green Grid
Land Ownership Plan

Copyright Ordnance Survey. Map data copyright and database right 2011.

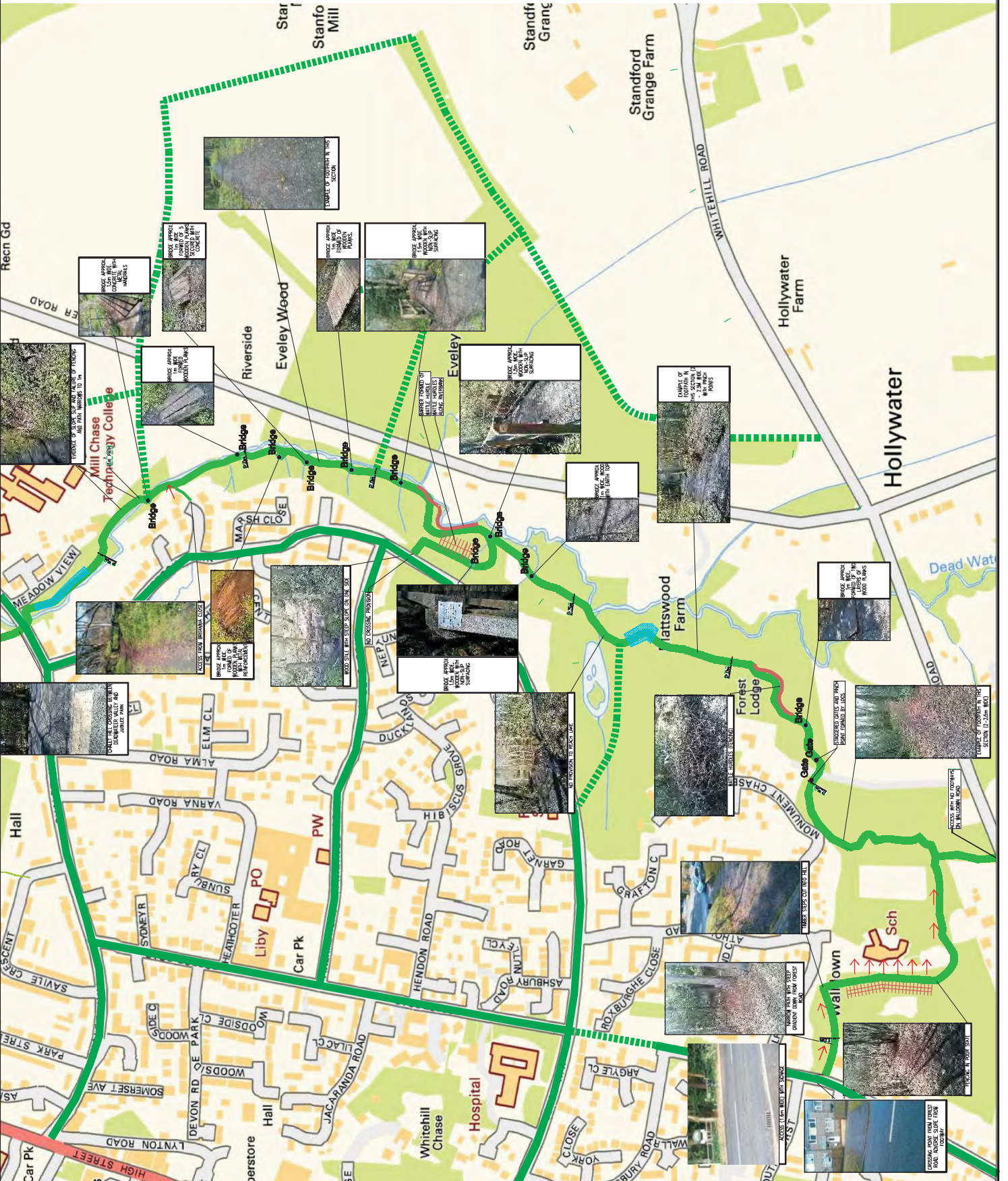
KEY:

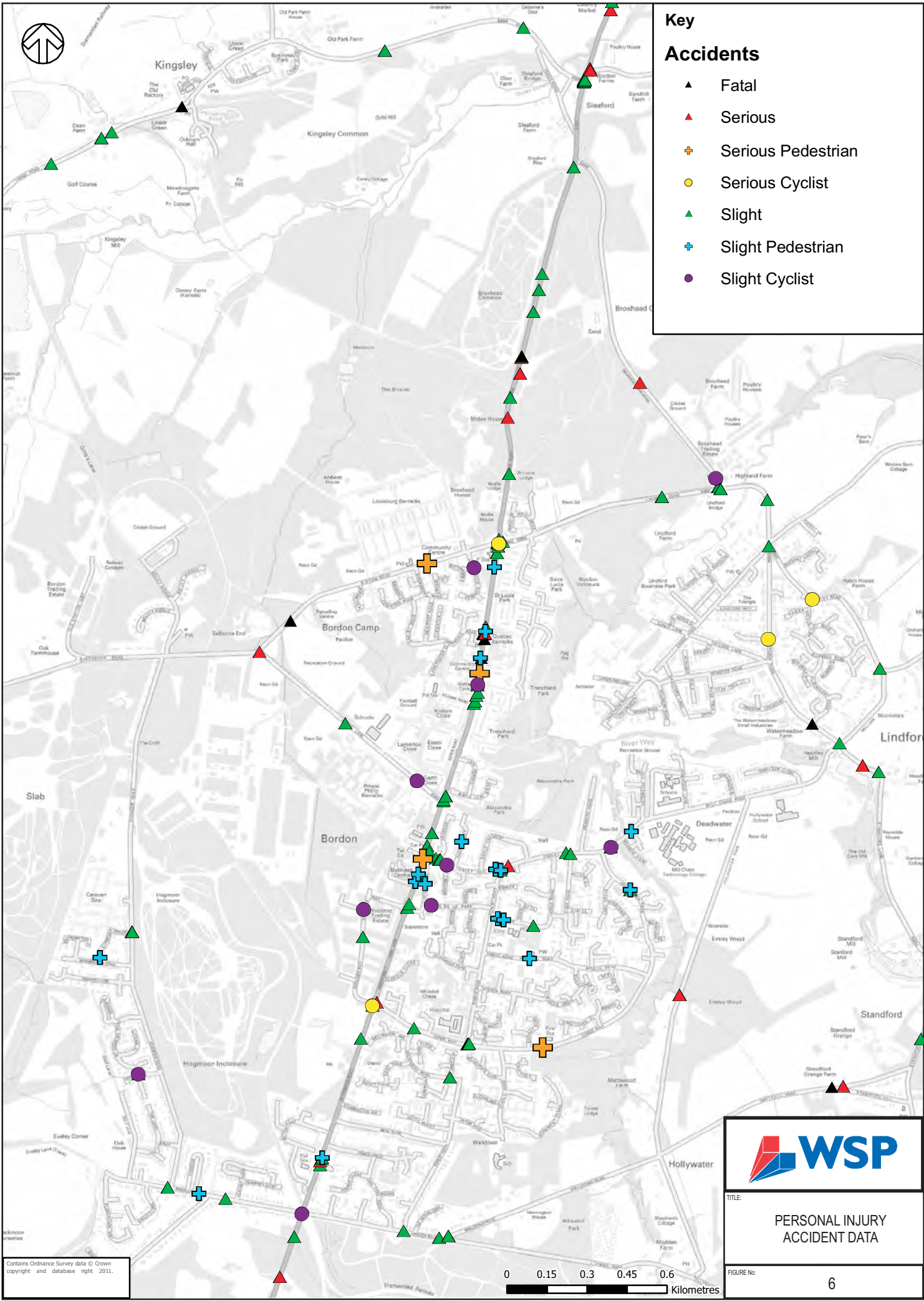
- FENCING
- EXCESSIVE/ADVERSE SLOPE
- WET AREAS
- PROPOSED GREEN LOOP AND GREEN GRID ROUTES/AUDITED
- OTHER PROPOSED GREEN LOOP AND GREEN GRID STREET ENHANCEMENTS

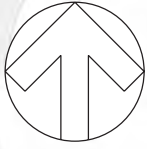


TITLE: DEADWATER VALLEY LOCAL NATURE RESERVE GREEN GRID AUDIT

FIGURE NO: 5

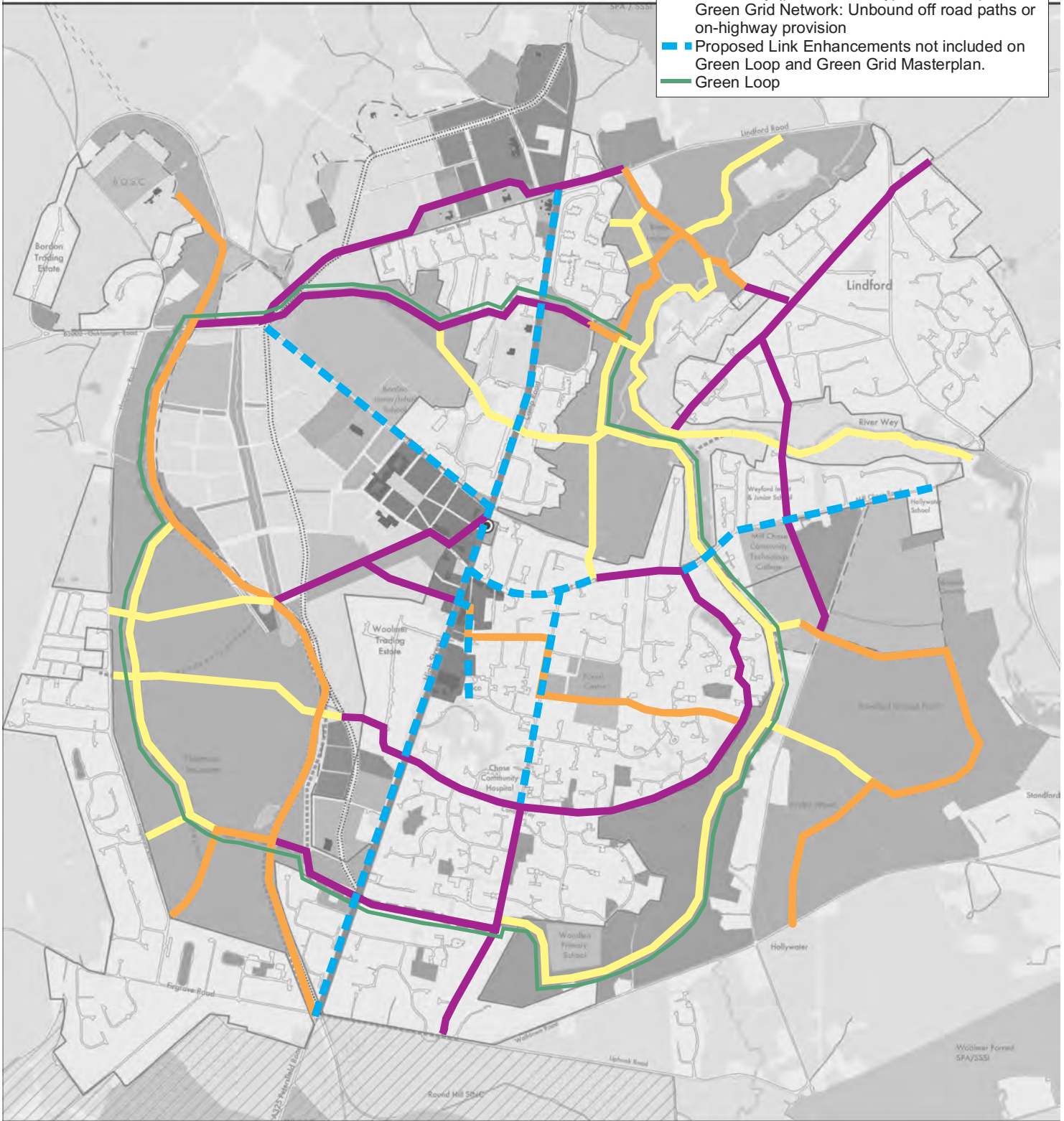






Key:

- Primary Green Loop and Green Grid Network: Hardstanding and lit off road routes or on highway provision
- Primary (pedestrian and cycle) Green Loop and Green Grid Network: Off road routes with bound surfaces and no lighting
- Secondary (pedestrian only) Green Loop and Green Grid Network: Unbound off road paths or on-highway provision
- Proposed Link Enhancements not included on Green Loop and Green Grid Masterplan.
- Green Loop

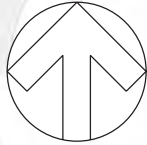


REPRODUCED FROM THE
ORDNANCE SURVEY MAP WITH
THE PERMISSION OF THE
CONTROLLER OF HER MAJESTY'S
STATIONERY OFFICE. LICENCE
NO. 100048755. CROWN
COPYRIGHT RESERVED.



TITLE:
**WHITEHILL & BORDON
PRIMARY AND SECONDARY GREEN LOOP AND GREEN GRID NETWORK**

FIGURE No:
7



Key:

- Short Term Strategy Recommendations (1-3 Years)
- Medium Term Strategy Recommendations (>3Years)
- Long Term Strategy Recommendations (>5Years)
- Green Loop



REPRODUCED FROM THE
ORDNANCE SURVEY MAP WITH
THE PERMISSION OF THE
CONTROLLER OF HER MAJESTY'S
STATIONERY OFFICE. LICENCE
NO. 100048755. CROWN
COPYRIGHT RESERVED.

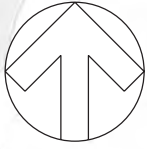
TITLE:

WHITEHILL & BORDON
SHORT-TERM, MEDIUM TERM AND LONG TERM
STRATEGY RECOMMENDATIONS

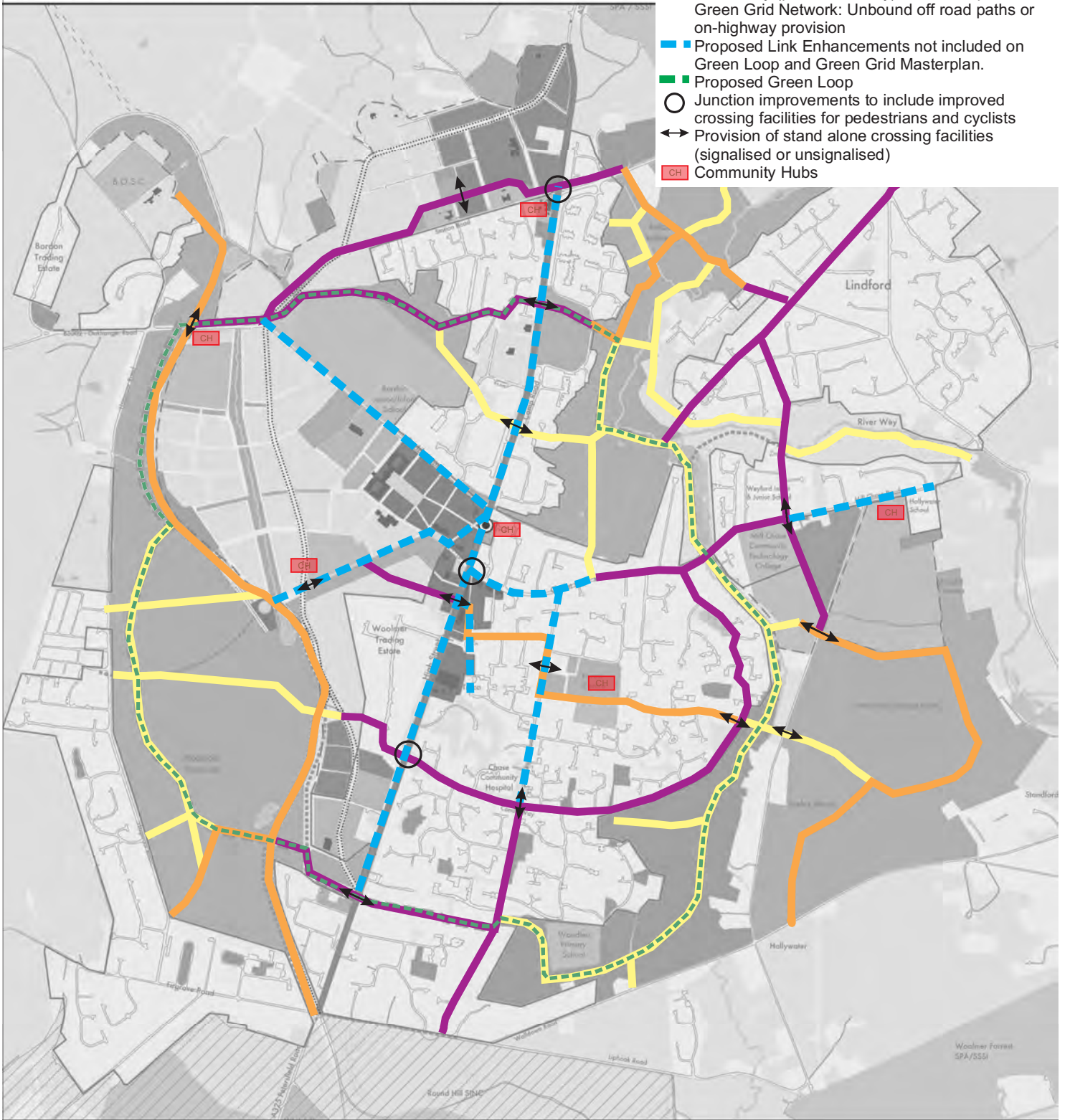
FIGURE No:

8





- Key:**
- Primary Green Loop and Green Grid Network: Hardstanding and lit off road routes or on highway provision
 - Primary (pedestrian and cycle) Green Loop and Green Grid Network: Off road routes with bound surfaces and no lighting
 - Secondary (pedestrian only) Green Loop and Green Grid Network: Unbound off road paths or on-highway provision
 - - - Proposed Link Enhancements not included on Green Loop and Green Grid Masterplan.
 - - - Proposed Green Loop
 - Junction improvements to include improved crossing facilities for pedestrians and cyclists
 - ↔ Provision of stand alone crossing facilities (signalised or unsignalised)
 - CH Community Hubs



REPRODUCED FROM THE ORDNANCE SURVEY MAP WITH THE PERMISSION OF THE CONTROLLER OF HER MAJESTY'S STATIONERY OFFICE. LICENCE NO. 100048755. CROWN COPYRIGHT RESERVED.

TITLE:

WHITEHILL & BORDON
GREEN LOOP AND GREEN GRID STRATEGY RECOMMENDATIONS

FIGURE No:

9

