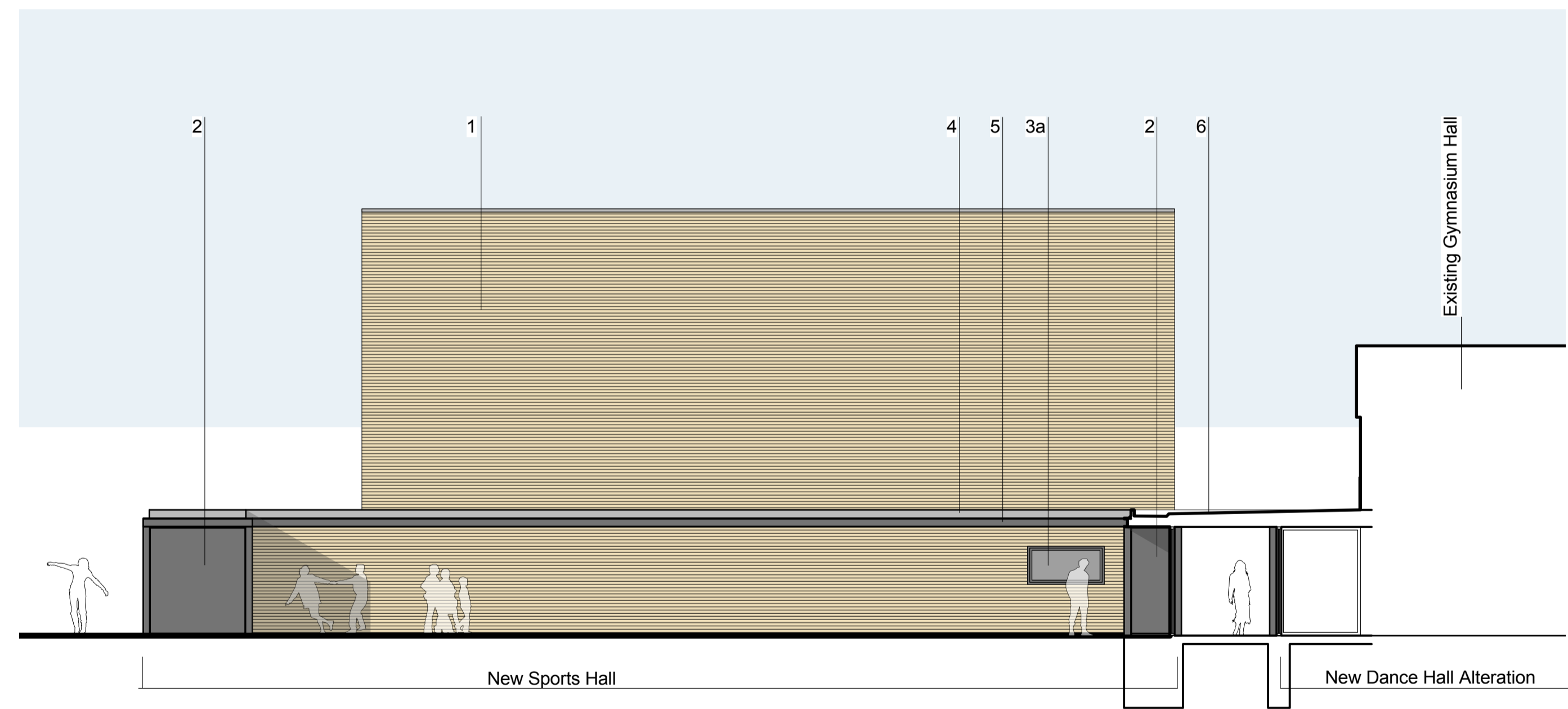


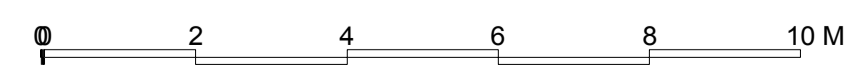
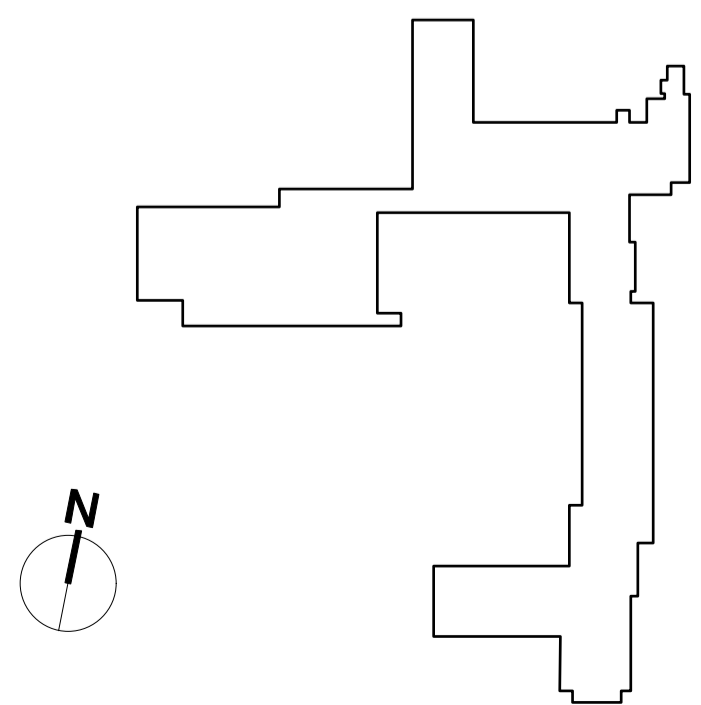
3. North Elevation



4. West Elevation



5. East Elevation



Notes

- This drawing is © copyright Hampshire County Council 2013. No unauthorised reproduction of any kind is permitted.
- No Dimensions to be scaled from this drawing.
- This map is reproduced from Ordnance Survey material with the permission of Ordnance Survey on behalf of the controller of Her Majesty's Stationery Office © Crown copyright. Unauthorised reproduction infringes Crown Copyright and may lead to prosecution or civil proceedings. (100019180), (2013)

rev	description	date	by
A	parapet height to hall amended	9.8.13	MJC

<p>Hampshire County Council</p>		<p>HCC Property Services, Three Minsters House, 76 High Street, Winchester SO23 8UL. tel: (01962) 847801</p>	
<p>PROJECT Warblington school Sports Hall</p>		<p>SHEET CONTENTS Proposed Elevations sheet 2</p>	
SCALE	DATE	DRAWN	CHKD.
1:100 @A1 1:200 @A3	27.6.13	BK	
DRAWING No. P09949-PL-302		REVISION	
FILE REF. P09949-901		A	

