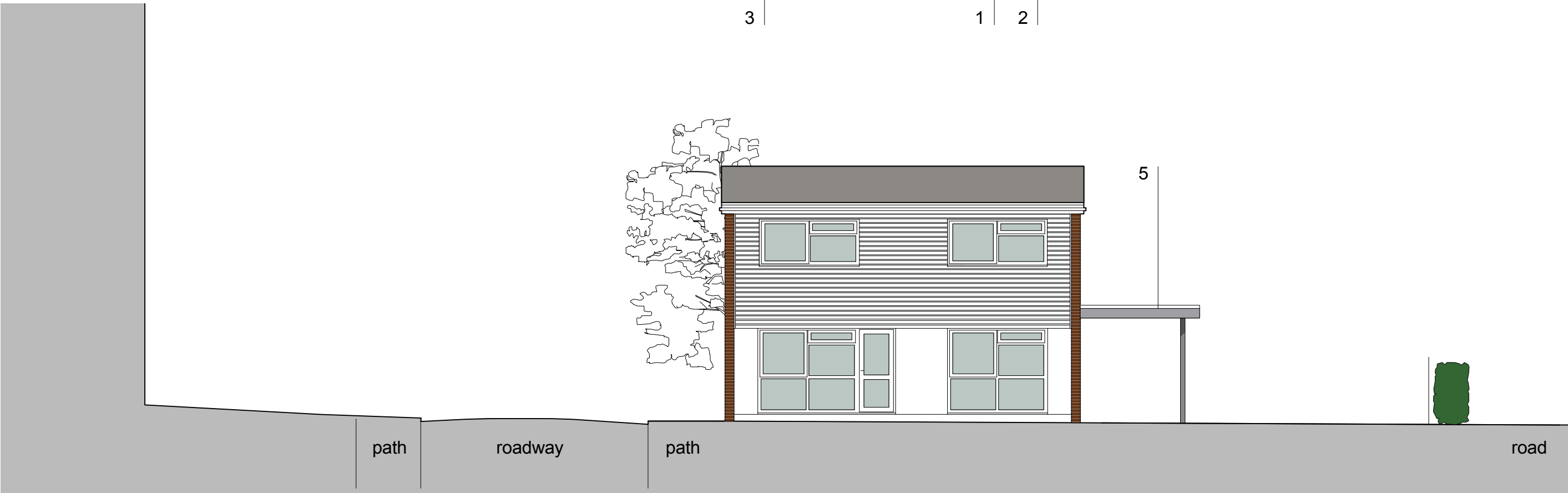
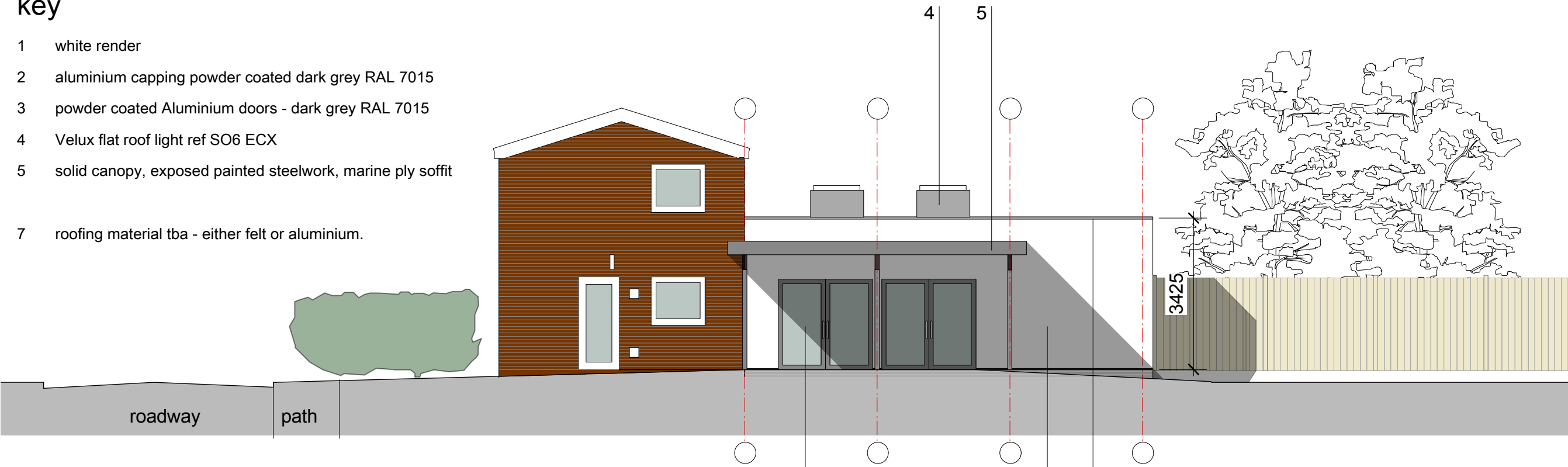


# key

- 1 white render
- 2 aluminium capping powder coated dark grey RAL 7015
- 3 powder coated Aluminium doors - dark grey RAL 7015
- 4 Velux flat roof light ref SO6 ECX
- 5 solid canopy, exposed painted steelwork, marine ply soffit
- 7 roofing material tba - either felt or aluminium.



## Planning



HCC Property Services,  
Three Minsters House,  
76 High Street, Winchester SO23 8UL.  
tel: (01962) 847801

Notes	
1 This drawing is © copyright Hampshire County Council 2013. No unauthorised reproduction permitted. All rights reserved.	3 This map is reproduced from Ordnance Survey material with the permission of Ordnance Survey on behalf of the controller of Her Majesty's Stationery Office © Crown Copyright. Unauthorised reproduction infringes Crown Copyright and may lead to prosecution or civil proceedings. (100019180), (2013)
2 No dimensions are to be scaled from this drawing	

rev	description	date	by

PROJECT <b>Warblington School Sports Development</b>			
SCALE @ A1 100	DATE 12.4.13	DRAWN. MJC	CHKD. ---

SHEET CONTENTS <b>Proposed Elevations Sheet 2</b>		
DRAWING No. <b>PO9949 - PL- 305</b>		
FILE REF. <i>PO9949 Pre School Planning Set</i>	REVISION	