

South West Elevation

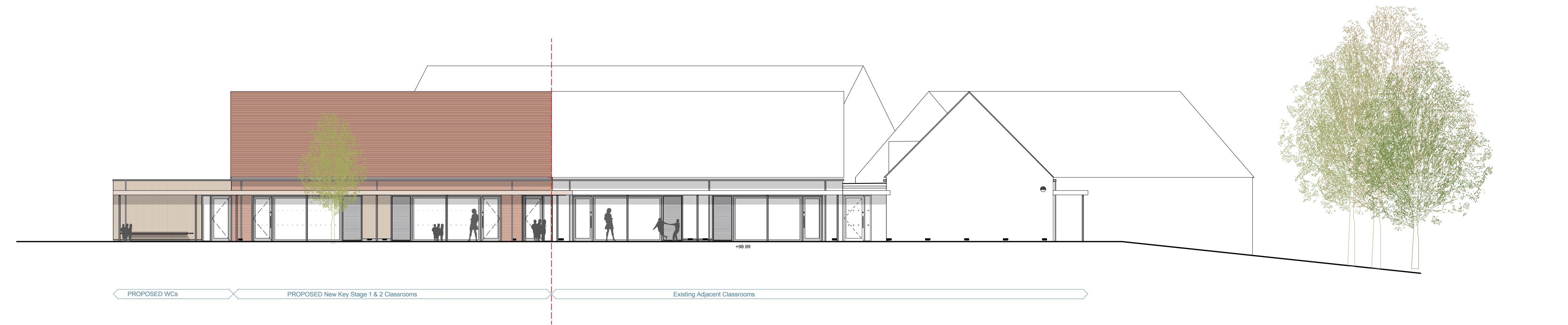
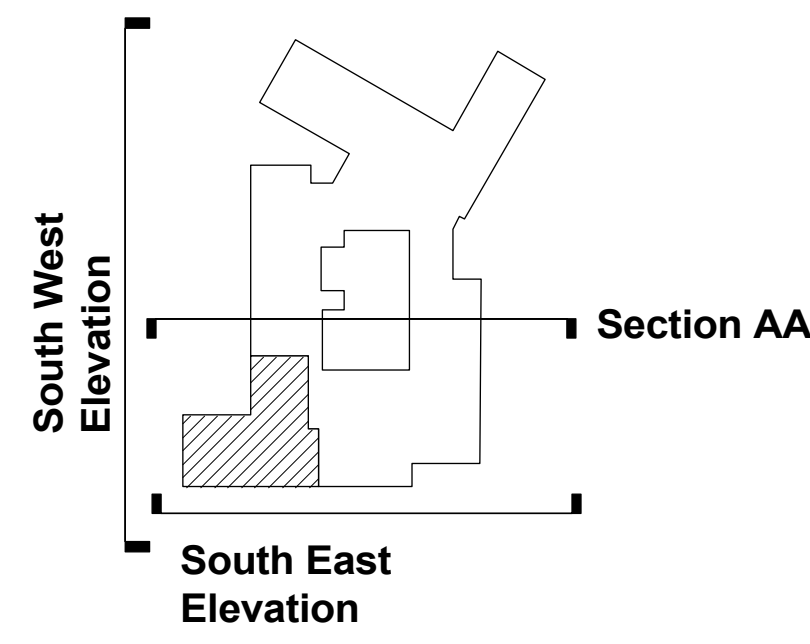


Section AA

Materials Key:

- Brickwork
- Clay Roof Tiles
- Timber Boarding
- Grey Cladding Panel

Windows and Doors:-
Grey Powder Coated
Aluminium to match existing



South East Elevation

P10985 - Tweseldown Infant School

Expansion from 3FE to 4FE Infants (360 place)

Proposed Elevations

1:125 @A1
1:250 @ A3

P10985-HCC-DR-A-035

Feb 2016