

HAMPSHIRE COUNTY COUNCIL

Decision Report

Decision Maker:	Executive Member for Economy, Transport and Environment
Date:	11 July 2014
Title:	Street Lighting – Part Night Lighting Trials
Reference:	5510
Report From:	Director of Economy, Transport and Environment

Contact name: Jim Pendrey

Tel: 01489 771770

Email: jim.pendrey@hants.gov.uk

1. Executive Summary

1.1. The purpose of this paper is to seek approval to trial a process and criteria to determine the County Council's response to requests for part night lighting within parishes or other determined areas, where requested by a parish or district council.

1.2. This paper seeks to

- set out the background to the recommendation;
- consider the financial implications;
- assess the key issues and risks; and
- briefly consider the future direction of the project.

2. Contextual information

2.1. As part of the replacement and upgrading of street lighting across Hampshire a variable lighting system, "Mayflower", is being installed allowing lights to be remotely dimmed at levels determined by the Authority. The current dimming regime is 25% from dusk (35lux) to midnight, 50% midnight to 05:00 and 25% 05:00 to dawn (18lux).

2.2. During consultation with various local parish councils, prior to the PFI Core Investment works, requests were received for the introduction of a part-night lighting option (i.e. for lights within the parish to be switched off between midnight and 05:00). The requests were received from Crondall, Eversley, Upper Clatford, and Hursley Parish Councils. Plans of the lighting locations and road accidents within these parishes are included in Appendix 2.

2.3. Options for a variety of variable lighting strategies were explored as part of a public survey carried out in 2008 on behalf of the PFI project. This showed that 52% of residents were not in favour of part-night lighting so the idea was

not pursued further. However public opinion may have changed with the recognition of increasing energy costs and the desire to reduce carbon consumption.

- 2.4. The PFI contract does permit flexibility in lighting regimes anticipating requests by local communities, particularly the rural villages, to determine their lighting levels. However, there are also contractual constraints on the number of changes that can occur within a year recognising the impact on the contractual payment mechanisms.

3. The Proposed Process and Criteria

- 3.1. The proposed process and criteria to be trialled as the County Council's response to requests for part-night lighting, and to be applied to the requests received to-date, are set out below.
- 3.2. Upon receipt of a request for part-night lighting, officers will carry out enquiries to establish that the area in question meets the following criteria:
 - The proposals do not affect any notable traffic routes;
 - The police, emergency services, and health service providers have no objection to the part-night lighting proposal.
- 3.3. Should these criteria be met, a full public consultation of affected residents will follow. A qualitative assessment of the responses will be carried out on a case by case basis to gauge whether there is any strong opposition, and whether there is sufficient support. This will also give residents an opportunity to explain the nature of any concerns or state what conditions they would like to see imposed upon the part-night lighting scheme for it to earn their support. If the public consultation proves favourable, a specific equalities impact assessment will follow for the area in question, particularly to assess the potential impacts upon elderly/disabled people, carers, and emergency services staff (see section 6 below). However, if the outcome of the public consultation is unfavourable, the County Council will either proceed no further or else consider the option of enhanced dimming of lights as a compromise.
- 3.4. Where implemented, trials need to be reviewed by the parish or district council for at least a 12 month period after introduction, so as to enable the decision to be reversed if residents are not happy. It is suggested this is done on a 3 monthly basis as this would enable all seasons to be covered.

4. Finance

- 4.1 The financial impact of trials is minimal. Costs relate to the consultation, which will be funded and carried out by the parish or requesting authority. Savings are expected to be made due to the reduced cost of energy for the

lights. The annual saving is approximately £1,000 for the requesting parishes in total, at current energy prices.

5 Performance

- 5.1 After a 12 month period of regular assessment by the parish or district council, County Council officers will decide whether the scheme may continue. This decision will be based upon public satisfaction and evidence that the scheme has had no adverse effects on crime and safety.
- 5.2 For the purposes of this trial, the County Council will also assess whether the criteria and process used have been adequate to ensure successful part-night lighting schemes. Based on this assessment, a paper will be brought to the Executive Member for Economy, Transport, and Environment making a recommendation as to whether to formalise the process and criteria as the County Council's standard response to requests for part-night lighting.

6 Other key issues

- 6.1 The generic Equality Impact Assessment (Appendix 1) indicates that there may be an impact on elderly and disabled people, and particularly carers or emergency service staff if they attend the area between midnight and 5am. There could be an increased risk to personal safety with the lack of light after midnight, and certainly the perception of personal safety would be greatly impacted, but this would be a matter on which the local residents would need to make a judgement through the consultation process. It is therefore appropriate to ensure these issues are considered as part of the public consultation to mitigate possible impacts.
- 6.2 In terms of crime and accidents, a general impact assessment attached in Appendix B, combined with the findings of the Equality Impact Assessment (Appendix 1), would suggest that, depending on the particular area in question, part night lighting could have little impact. Moreover, it could have positive benefits for the rural nature of the areas in question.
- 6.3 Enquiries of both West Sussex County Council and Dorset County Council, who have already implemented part night time lighting, indicate that there have been no adverse effects with respect to the level of crime or number of accidents in their areas. However, in light of the concerns outlined above, particularly in terms of emergency service staff, carers, and elderly and disabled people, the process recommended in this paper will include a specific equalities impact assessment for each area in question as outlined above in paragraph 3.3.

7 Future direction

- 7.1 After the process and criteria have been trialled for 12 months, a decision will be taken in consultation with the Executive Member for Economy, Transport, and Environment as to whether the approach should be formalised as the County Council's standard response to requests for part-night lighting.

8 Recommendation

- 8.1 That the Executive Member for Economy, Transport, and Environment approves a trial of the criteria and process outlined in section 3 of this report as a standard response to requests for part night lighting from parish and district councils in order to determine whether exceptions will be made to the County Council's policy not to pursue part night lighting in Hampshire.

Equality Impact Assessment –

Name of the project or proposal:

**Introduction of Part Night Lighting Provision
in Rural Parishes**

Equality statement – summary of findings:

What are you proposing to do?

Introduce part night lighting provision where requested by local parish councils. This would see street lights switched off between midnight and 05:00am

Why are you doing it?

At the request of local Parish Councils.

Who is intended to benefit from this proposal?

Local residents, the Highway Lighting Authority and local Lighting Authority (where present)

What evidence is available about the needs of the relevant equality groups?

None at present. This would have to be gathered as part of a consultation exercise within the specific communities in question.

What equalities issues or impacts have you identified?

The introduction of part-night lighting in rural parishes may have a high impact on elderly or disabled residents within those areas especially those requiring access to night time residential care or emergency medical treatment.

Carers and emergency services staff may feel more vulnerable if required to attend resident's homes late at night or early in the morning in areas where lighting was previously provided. Residents may also feel their ability to travel at night is curtailed especially if they have to travel any distance between their vehicle and front door.

Impact on the environment is also high but, this impact is felt to be positive, returning the areas effected to a more rural character and allowing unimpeded views of the night sky. Light intrusion into nearby properties will also be negated.

What do you propose to do to manage the impacts?

Local Parish Councils will be required to consult with residents, emergency services and other identified Key Stakeholders. A qualitative assessment of responses will be required to identify and mitigate, where possible, the impact or decide not to proceed. In

addition, a specific equalities impact assessment will be carried out for each specific area where part night lighting is being considered.

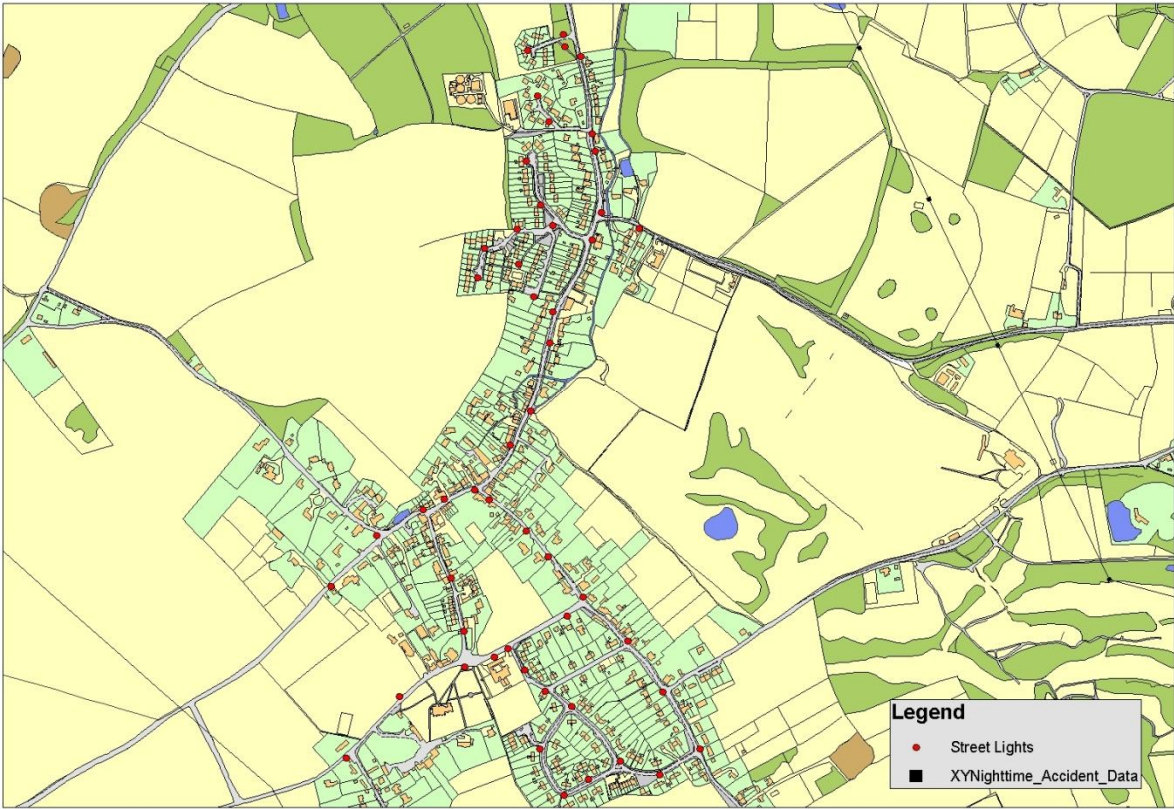
Potential mitigating actions – summary of actions

What could be done to mitigate the impact on the identified groups?

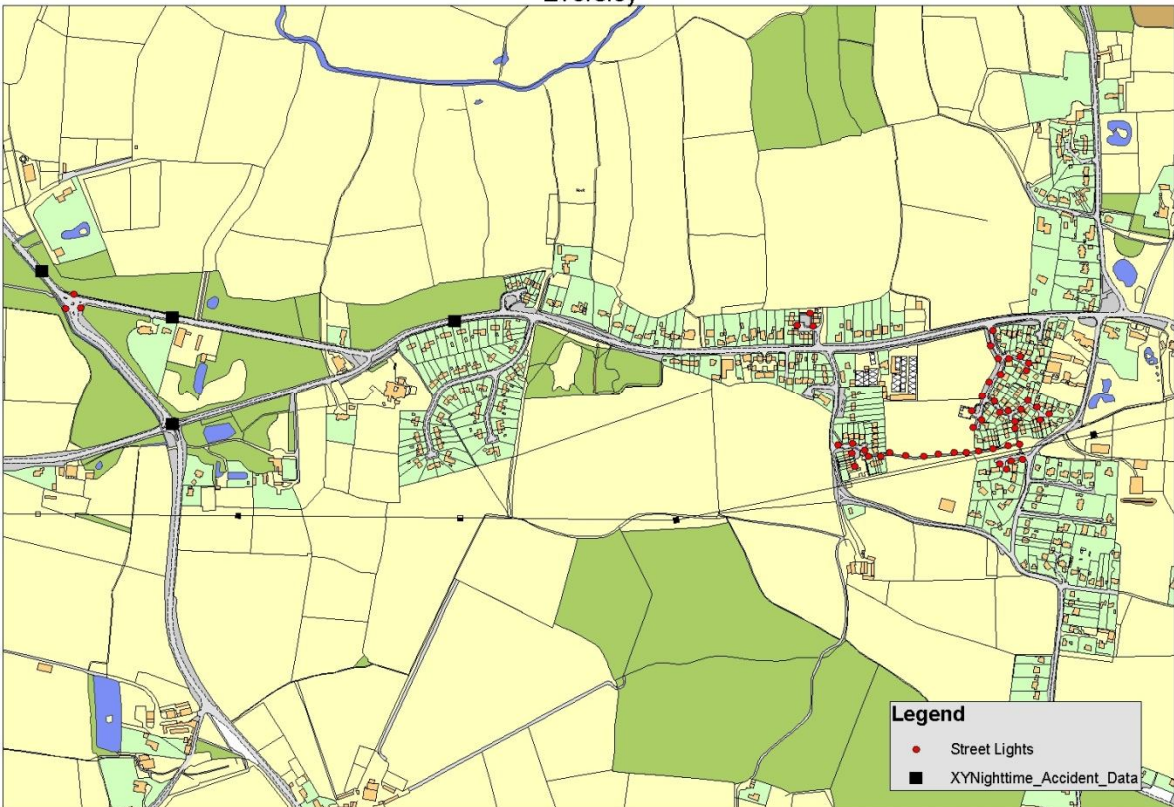
A greater understanding of the needs of such residents is required. Street lighting being switched off may reveal significant issues from the consultation exercise and the idea may have to be abandoned or amended.

Appendix 2

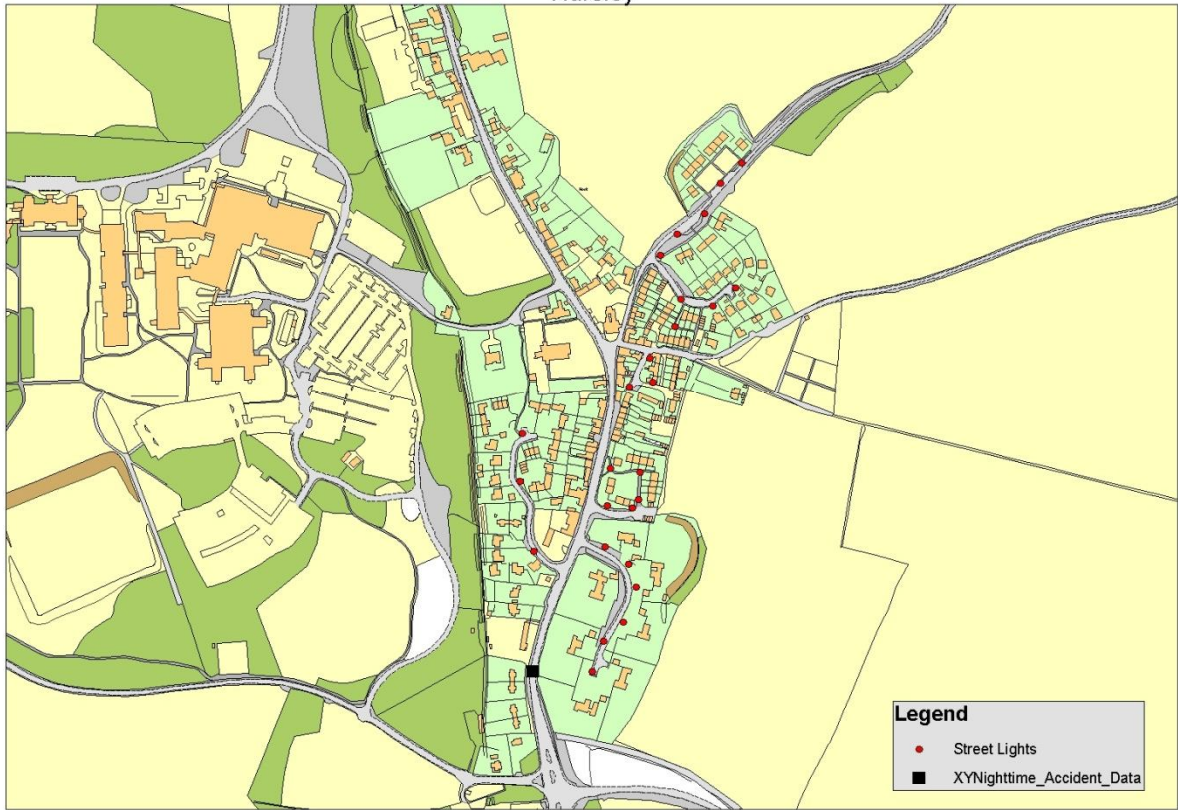
Crandall



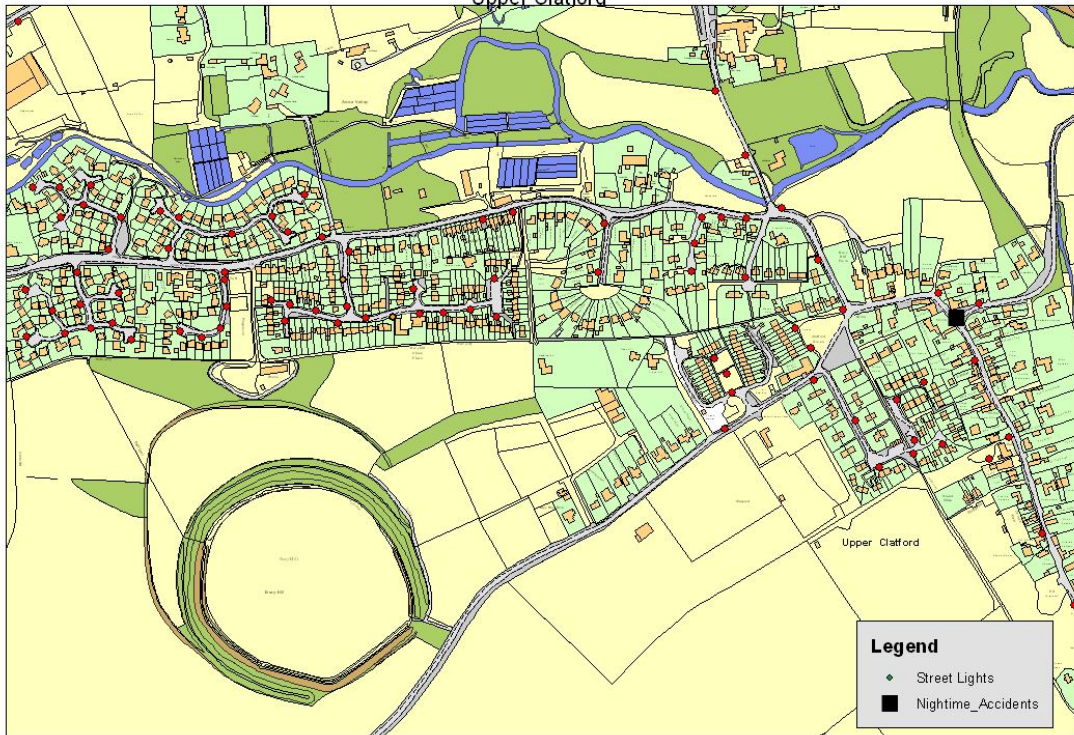
Eversley



Hursley



Upper Clatford



CORPORATE OR LEGAL INFORMATION:

Links to the Corporate Strategy

Hampshire safer and more secure for all:	no
Corporate Improvement plan link number (if appropriate):	
Maximising well-being:	Yes
Corporate Improvement plan link number (if appropriate):	
Enhancing our quality of place:	Yes
Corporate Improvement plan link number (if appropriate):	

Section 100 D - Local Government Act 1972 - background documents

The following documents discuss facts or matters on which this report, or an important part of it, is based and have been relied upon to a material extent in the preparation of this report. (NB: the list excludes published works and any documents which disclose exempt or confidential information as defined in the Act.)

Document

Location

None

IMPACT ASSESSMENTS:

1. Equalities Impact Assessment:

- 1.1 The proposals in this report have been developed with due regard to the requirements of the Equality Act 2010, including the Public Sector Equality Duty and the Council's equality objectives. The website contains a summary [assessment of the impacts](#) on Safe and Well Managed Highways in Hampshire
- 1.2 A generic Equality Impact assessment has been undertaken (Appendix 1) identifying a possible impact on the elderly or disabled residents. Further information will be required through public consultation and a specific Equalities Impact Assessment to establish actual impact and to determine the mitigation.

2 Impact on Crime and Disorder:

- 2.1 There could be an impact on crime and this will be discussed with the police with respect to the areas in question. Crime in the requesting parishes is currently low (57 reported incidents across 1,744 households in the previous 12 months within the lit areas). Impact on crime and disorder will form part of the trial review process.

3 Climate Change:

- 3.1 How does what is being proposed impact on our carbon footprint / energy consumption?

The proposals have a positive impact on energy consumption and carbon footprint. Within the requesting parishes, savings in energy and CO₂ emissions would come to 3,538kW/hs and 1.9mTs respectfully.

- 3.2 How does what is being proposed consider the need to adapt to climate change, and be resilient to its longer term impacts?

There are no impacts with regard to longer term climate change.