

Solent Gateways, East Cowes

Solent Transport Presentation
24 June 2015

East Cowes Regeneration

“The East Cowes project is a major regeneration scheme. It will create a vibrant community with a long-term sustainable future, a revitalised town centre and waterfront, and increased employment opportunities within the marine, retail and leisure sectors.”

Vision Statement. Appendix A Summary of East Cowes Masterplan planning application 2006.

Project overview

- Opportunity to redevelop East Cowes Town Centre
- Synergies with Victoria Marina development
- Separation of traffic for marshalling yard and town
- Relocation and expansion of Red Funnel terminals in East Cowes and Southampton
- Ferry terminal relocation in Southampton enables £450m Royal Pier Waterfront development
- £15m investment from Solent LEP for associated transport and public realm improvements (to be considered July 2015) & £15m investment from Red Funnel



East Cowes Master Plan 2007



East Cowes Master Plan 2007

The master plan has seen the arrival of:

- Supermarket (Waitrose)
- Medical centre
- Energy centre
- 186 new housing starts
- Work has commenced on the outer breakwater

Future works include:

- Victoria Marina and mixed use development to the north of East Cowes
- Kingston Marine Park
- Island Technology Park
- Trinity Wharf / Phoenix Yard
- Town centre transport and public realm improvements

Funding

- A revised business case was delivered in June 2015
- The Solent LEP has indicated that the revised business case will be considered for approval in July 2015

Estimates:

Transport & public realm - £3,819,900

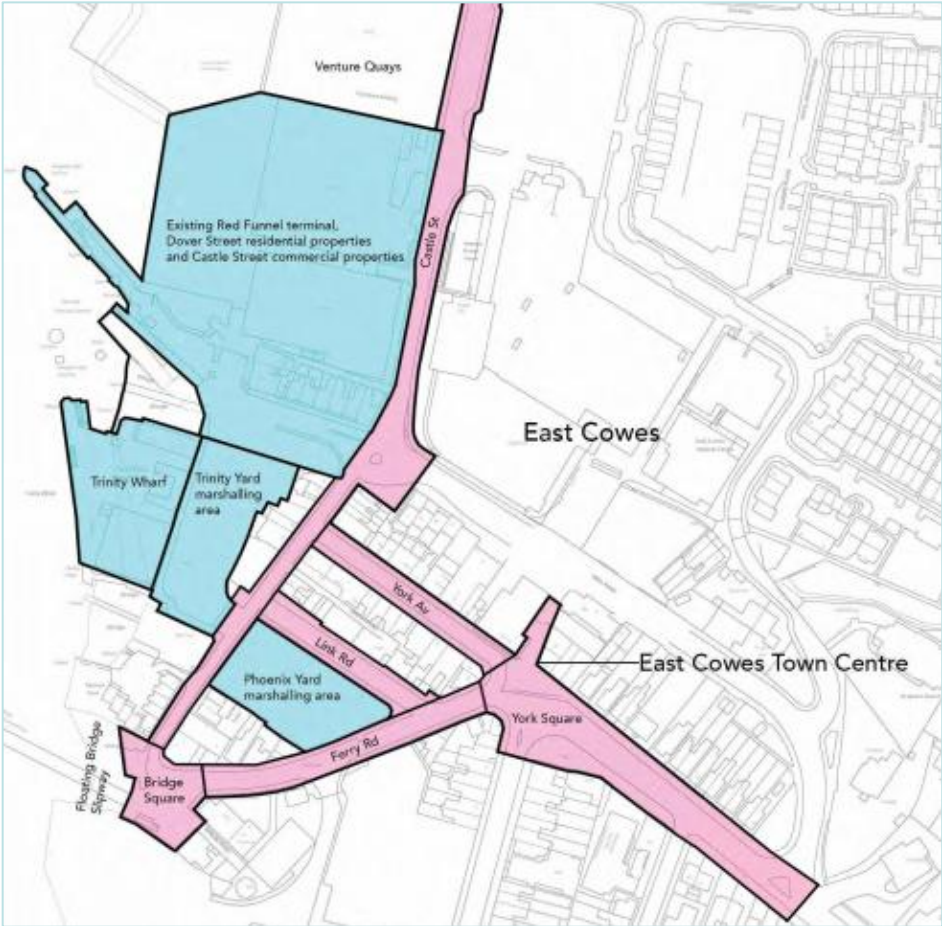
Float bridge replacement - £4,685,300
- (sought from LEP £3.6m approx.)

Public Realm Scheme - Objectives



To complete the Masterplan, the public realm design must:

- Accommodate the Red Funnel marshalling yard
- Provide for good quality transport interchange
- Ensure the integrity/cohesion of the town centre is improved
- Be of high quality in materials and improve the environment
- Enhance the place as a 'gateway to the island'
- Set out a cohesive waterfront
- Accommodate a mixed balance of land uses

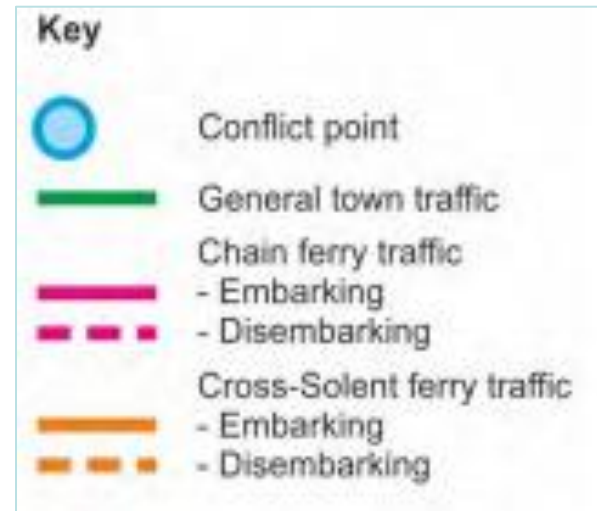
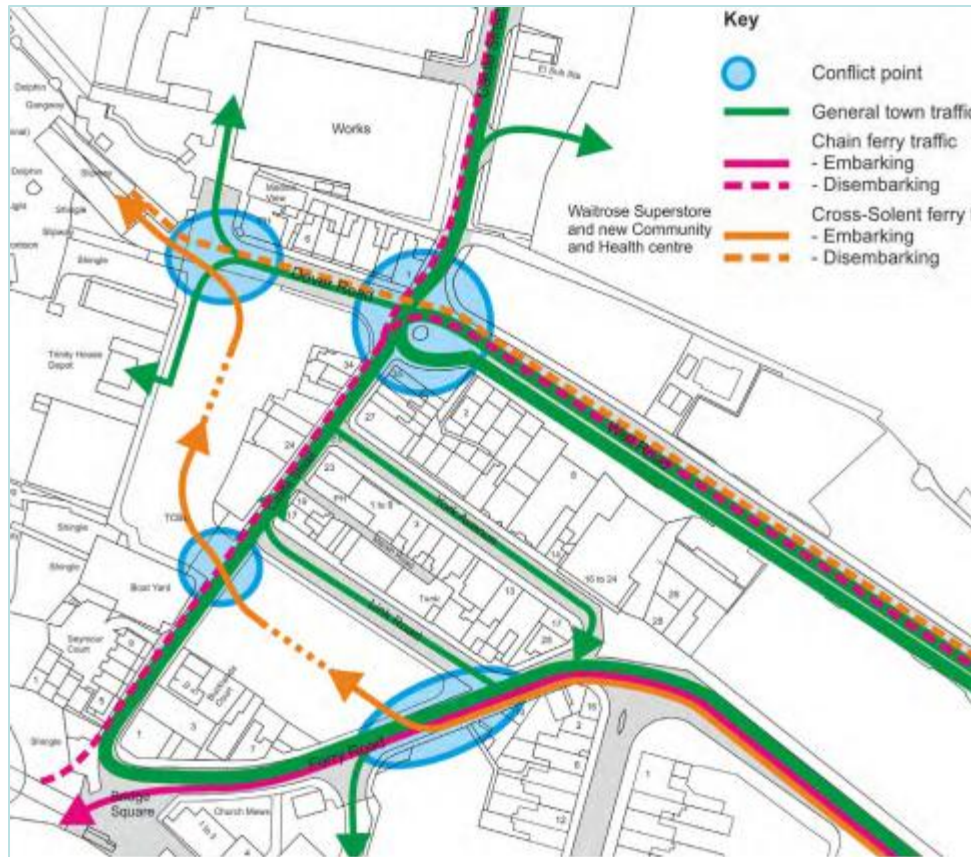
Development areas



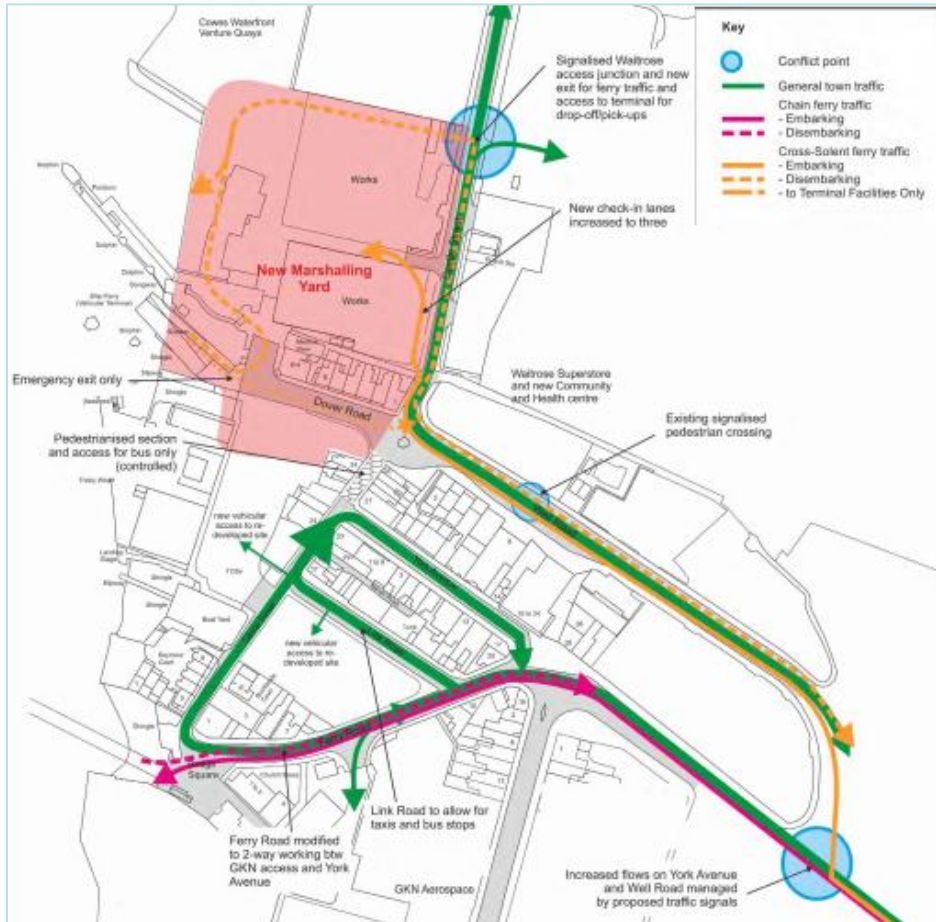
LEGEND

	Areas included in Red Funnel planning application
	Areas included in business case for funding by Solent LEP

Transport issues and opportunities



Proposed traffic movements

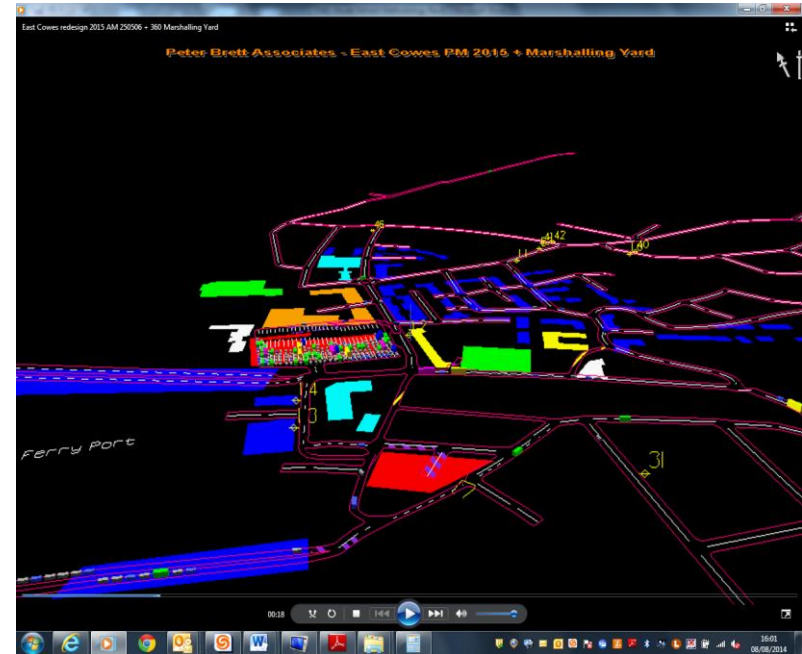


Traffic modelling - Background

- Consultants appointed to refresh the transport model for East Cowes
- The previous transport model was created in 2004/5 and has been updated as applications have been amended and sites have been implemented.
- The latest refresh utilises new traffic data from 2014 with Waitrose, the medical centre and a proportion of the Barratt's development occupied

Summary of Revised Model Assumptions

- Increased size of marshalling yard from 220 CEU to 450 CEU
- Floating bridge capacity increased from 15 CEU to 30 CEU
- Modified Red Funnel marshalling yard layout
- Amended highway and land uses
- Forecast 2026



Traffic modelling (Key outcomes)

Key findings:

- Traffic signals will be required at junction of Well Road and York Avenue and at the exit from the marshalling yard on Castle Street
- Co-ordination will be required between the two signalised junctions to minimise impact of road, ferry and chain link ferry alterations.
- Traffic signal control system will be required at Waitrose/Ferry junction and also likely at York Avenue and Well Road junction.
- Consider ways to minimise clashes between floating bridge and ferry discharge
- Consider traffic management to deter use of Old Road as an alternative route

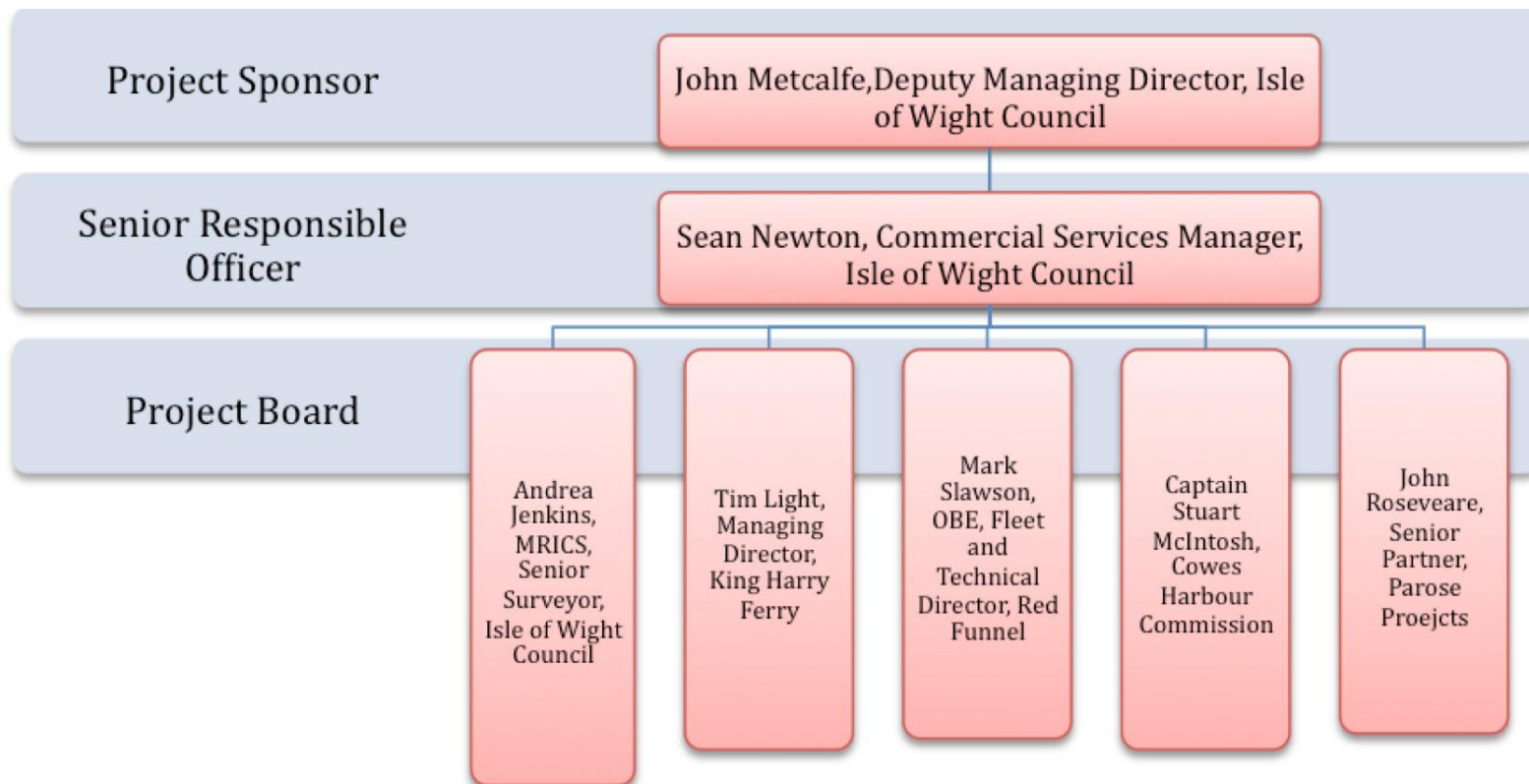
Floating Bridge Replacement

Current status:

- Cost review has been undertaken to support the business case
- Procurement for a naval architect is underway but completion of services is subject to funding approval
- Pre-Qualification Questionnaires (PQQ) for shipbuilders completed
- Invitation To Tender (ITT) for shipbuilder to be distributed in October

Floating Bridge Replacement

GOVERNANCE

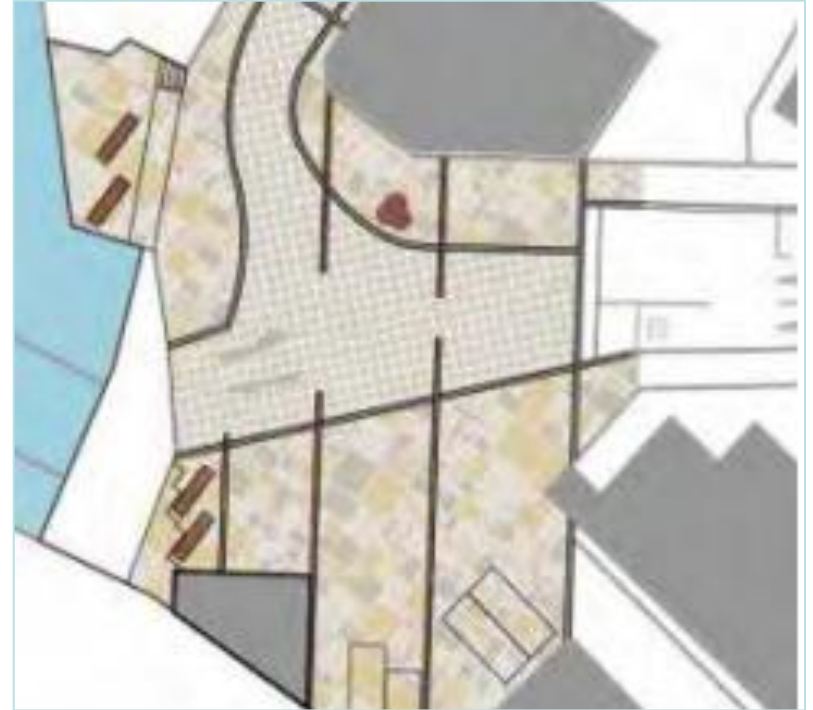


Transport & Public Realm Scheme

Current status:

- A cost review has been undertaken to support the business case
- Land ownership plans have been prepared
- Traffic modelling & options testing has been undertaken to support the revised business case
- Procurement for preliminary design commencing June 2015
- Technical workshop outcomes and feedback from public consultation events will inform amended design once LEP funding is available

Bridge Square



York Square



Next steps

- Selection of preferred supplier for naval architect services (June 2015)
- Consideration of revised business case by Solent LEP (July 2015)
- Red Funnel to submit planning application (August 2015)
- Selection of preferred supplier for preliminary/detailed design for transport and public realm improvements (August 2015)
- Undertake additional surveys including parking surveys to enable amendments to design to reflect consultation to date (August / September 2015)



ISLE *of*
WIGHT
C O U N C I L