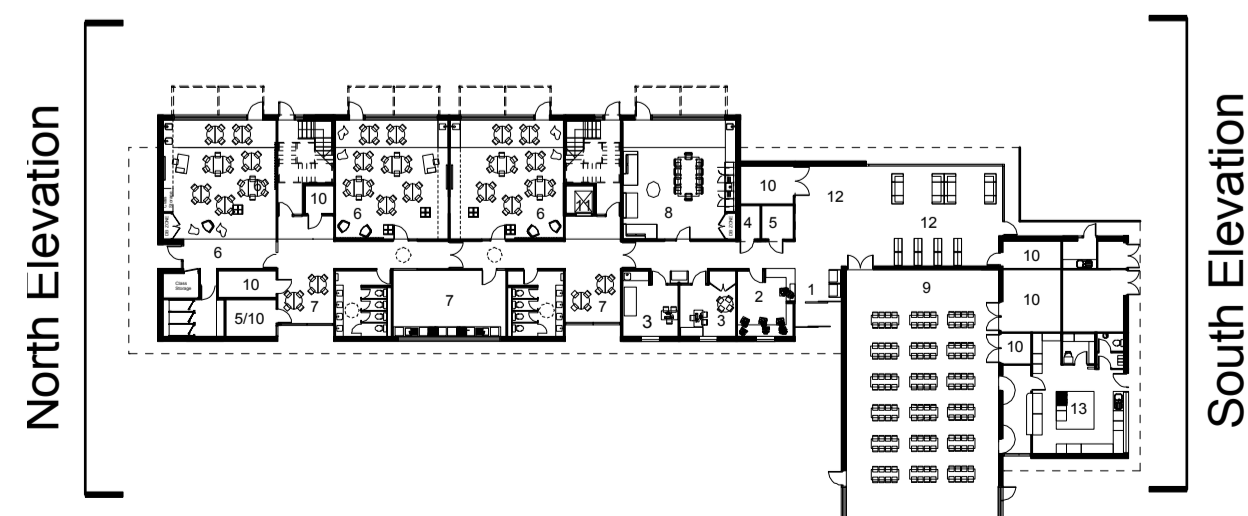








North Elevation



South Elevation



Material Key

-  Timber Cladding
-  Brickwork
-  Slate or slate effect roof
-  Glazing




Notes

- This drawing is © copyright Hampshire County Council 2014. No unauthorised reproduction of any kind is permitted.
- No Dimensions to be scaled from this drawing
- This map is reproduced from Ordnance Survey material with the permission of Ordnance Survey on behalf of the controller of Her Majesty's Stationery Office © Crown copyright. Unauthorised reproduction infringes Crown Copyright and may lead to prosecution or civil proceedings. (100019180), (2014)

rev	description	date	by
P1	Planning Submission	09/04/14	AH
P2	Title block amended to state 'North + South Elevation'	03.06.14	RH

PLANNING



Hampshire County Council
Castle Hill Primary School
(Rookdown Site)

HCC Property Services,
 Three Minsters House,
 76 High Street, Winchester SO23 8UL.
 tel: (01962) 847801

Property Services

PROJECT				SHEET CONTENTS	
Hampshire County Council				Proposed Elevation	
Castle Hill Primary School				North + South	
(Rookdown Site)				DRAWING No. P09155A 301	
SCALE	DATE	DRAWN	CHKD.	FILE REF.	REVISION
1:150 @ A1 1:300 @ A3	26/03/14	AH	RH	P09155 A 300	P2