



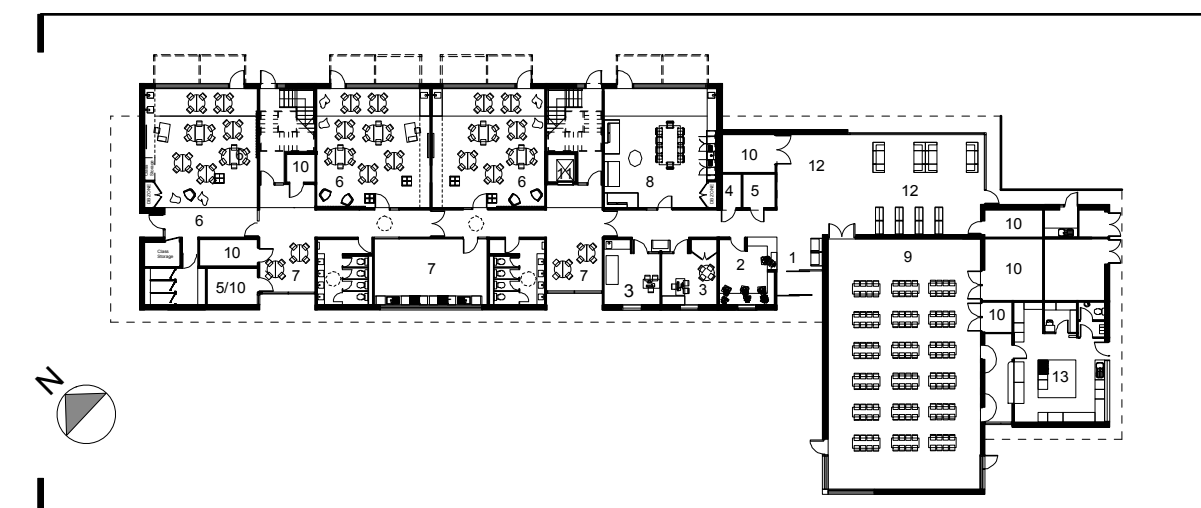
West Elevation



East Elevation

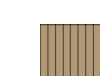





East Elevation



West Elevation

Material Key



-  Timber Cladding
-  Brickwork
-  Slate or slate effect roof
-  Glazing

0m 5 10 15 20m

1: 150 @ A1

Notes	rev	description	date	by
1 This drawing is © copyright Hampshire County Council 2014. No unauthorised reproduction of any kind is permitted.	P1	Planning Submission	09/04/14	AH
2 No Dimensions to be scaled from this drawing				
3 This map is reproduced from Ordnance Survey material with the permission of Ordnance Survey on behalf of the controller of Her Majesty's Stationery Office © Crown copyright. Unauthorised reproduction infringes Crown Copyright and may lead to prosecution or civil proceedings. (100019180), (2014)				

PLANNING

 <p>Hampshire County Council</p>	<p>HCC Property Services, Three Ministers House, 76 High Street, Winchester SO23 8UL, tel: (01962) 847801</p>				
	<p>PROJECT Hampshire County Council Castle Hill Primary School (Rooksdown Site)</p>		<p>SHEET CONTENTS Proposed Elevation East & West</p>		
SCALE 1:150 @ A1 1:300 @ A3	DATE 26/03/14	DRAWN AH	CHKD RH	DRAWING No. P09155A 300	REVISION P1
FILE REF. P09155 A 300					