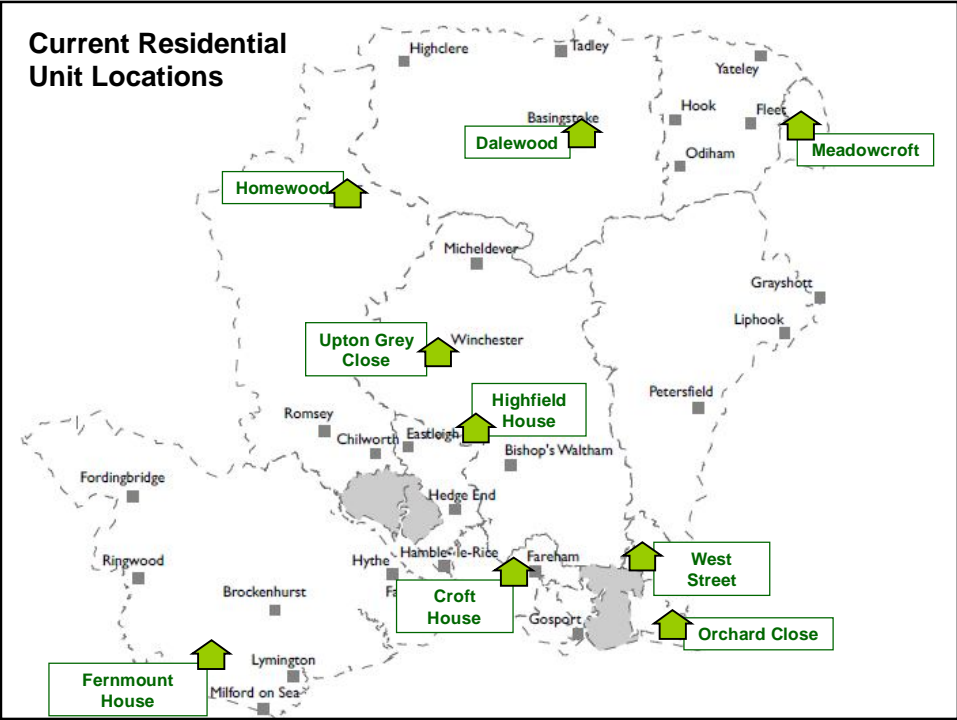
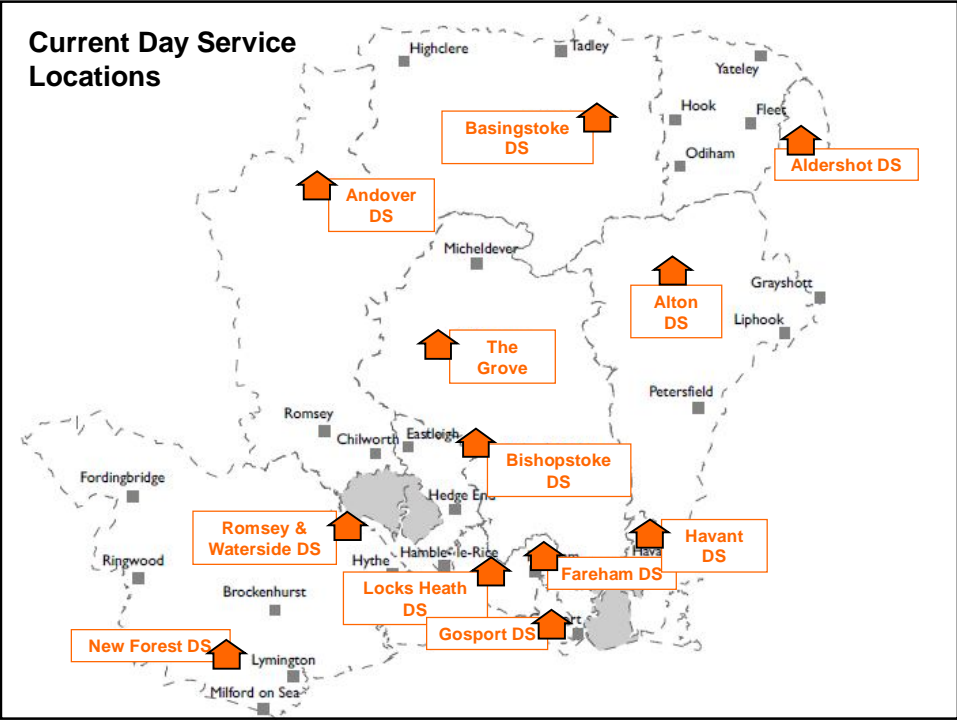


# RESPONSE TO CONSULTATION AND PROPOSALS FOR THE TRANSFORMATION OF LEARNING DISABILITY SERVICES

## Background

The Council owns:

- 9 residential homes with mixed provision of long stay residential care, respite care and crisis care
- 12 main day services



## Aims of Transformation are modernisation and improvement

- Offering more choice for people with learning disabilities
- Offering more day opportunities in the community
- Improving facilities for people with complex needs
- Making services more attractive so that people continue to choose them
- Matching services with current and future demand
- Making services efficient and therefore sustainable
- Maintaining and improving services rather than cutting them

## Engagement with people with learning disabilities and their families

- Pre- consultation engagement and 14 week consultation with 25 events held across the County.
- All current service users and families were invited
- These events enabled individual 1:1s between officers and families
- Advocacy and the Partnership board were fully involved
- Recognition in Community Care magazine for the quality and extent of this consultation

## Engagement with staff

- 27 briefings for staff were held before and during the consultation
- Staff were encouraged to respond to the public consultation
- There were group responses from 7 specific units involving 120 staff

## Full and extensive consultation

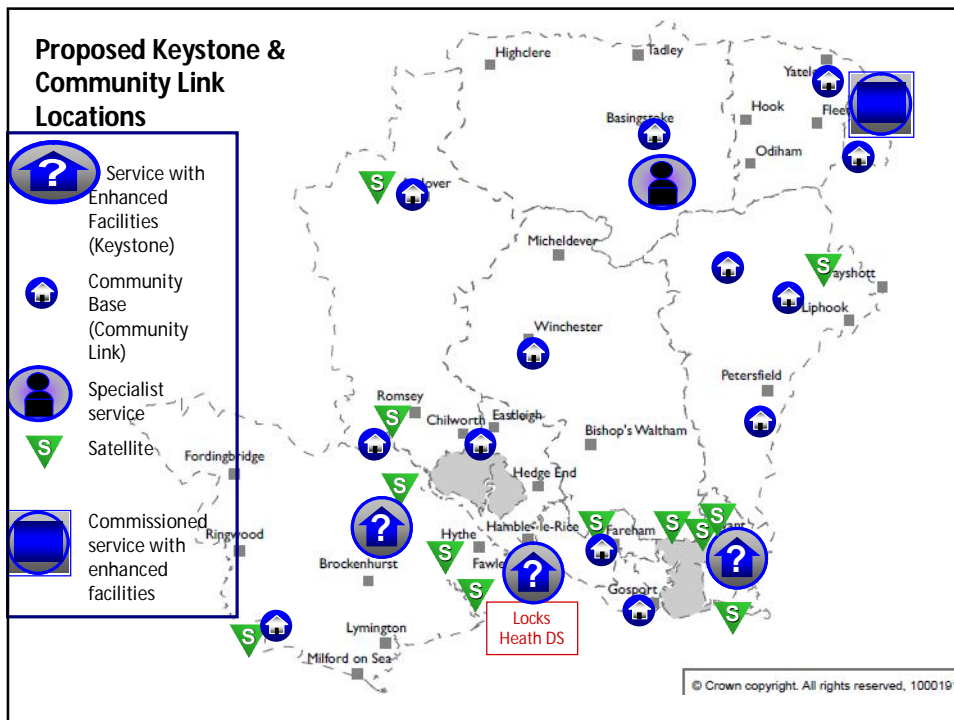
- 442 consultation responses were received
- Feedback was independently analysed
- Some proposals were strongly supported
- Some of the recommendations have changed significantly due to feedback

## Day Service Recommendations

- Enhancing services for people with complex with enhanced facilities (Keystone Services) in Havant with Locks Heath with a newly built service in Totton (please see Sam's and Karen's stories)
- Providing another 13 smaller community bases (Community Link Services) closer to community facilities (please see Lisa's and Cheryl's stories)
- Increasing choice of alternatives to traditional day services (please see Deb's and Stuart's stories)
- Changing Basingstoke and Bishopstoke Day Services first
- Maintaining current satellite services

## Response to Day Service Consultation Feedback

- Most of the day service proposals were very well received by people
- Two services will not be relocated because they are based in newer buildings
- Start-up money is to be invested in friendship networks (£50k) and Telecare (£50k)



## Residential Recommendations

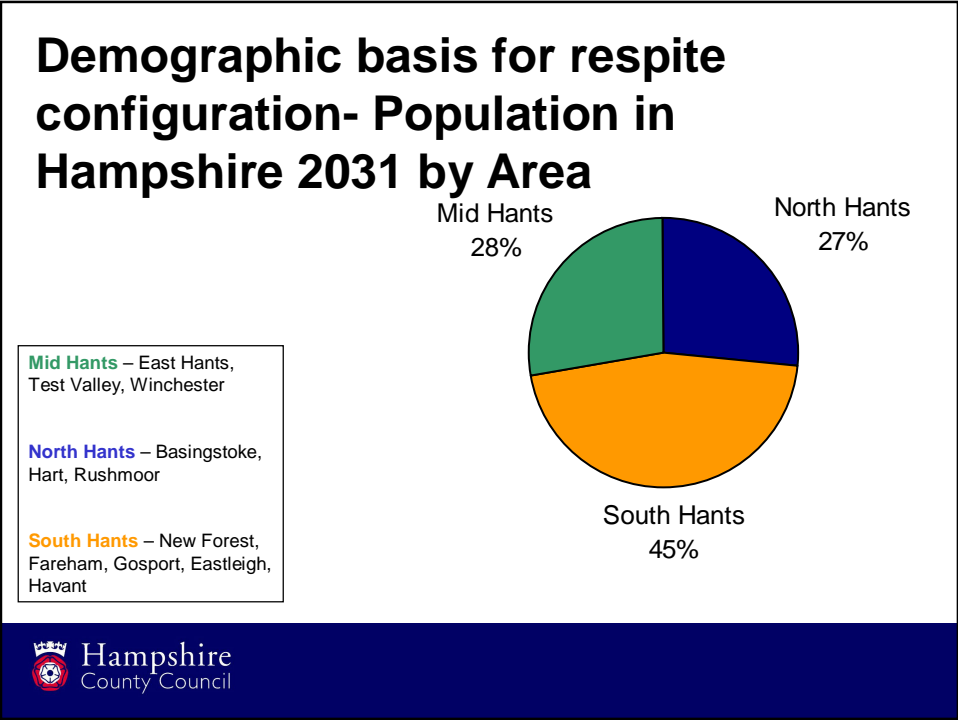
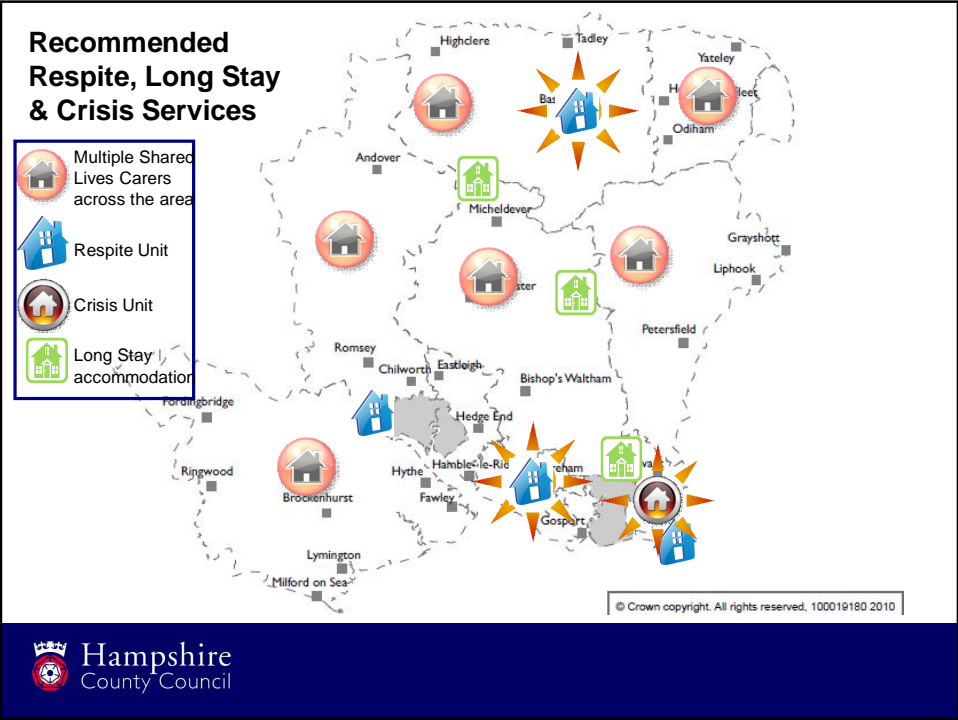
- That enhanced residential respite facilities for people with complex needs be built in Basingstoke and Fareham
- That crisis, long stay care and respite do not happen in the same home
- Matching capacity of respite beds to future demand
- Development of alternatives to residential respite
- Development of a new model of crisis
- Exploring other models of support for those living in residential care (Please see Elizabeth's story)

## Response to Residential Consultation Feedback

- New respite service in Fareham, retaining more respite beds than proposed
- One Upton Grey Close home to remain, retaining more long term beds than proposed
- There has been a full review of proposals for Meadowcroft although retention of this service is not sustainable

## Response to Residential Consultation Feedback

- Responding to the respite needs and expectations of younger people is important for the future
- Personalisation and Self-Directed Support have prompted a move away from traditional services
- Feedback has been that younger people want alternatives to registered respite with a younger peer group. Start- up money (£50k) will be provided to assist in development of such alternatives
- Shared Lives and Supported holidays can be more cost effective than a registered respite service.



## Implementation

- If recommendations are agreed then they would present exciting opportunities for people with learning disabilities
- Changes **will** be made working with people with learning disabilities, family carers, staff and other stakeholders with local member kept fully informed

## Day Services with most change needed - Basingstoke Day Services



## Basingstoke Day Services



## Basingstoke Day Services



## Day Services with most change needed - Bishopstoke Day Services



## Bishopstoke Day Services



## Bishopstoke Day Services



## The model for Keystone Services- Locks Heath Day Services



## Locks Heath Day Services



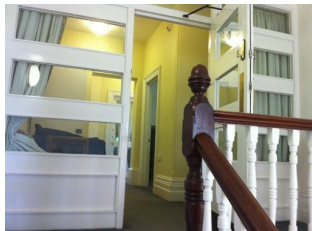
## Respite buildings with most change needed- Meadowcroft



## Respite buildings with most change needed- Croft House



## Respite buildings with most change needed - Croft House



## A model for future respite facilities

