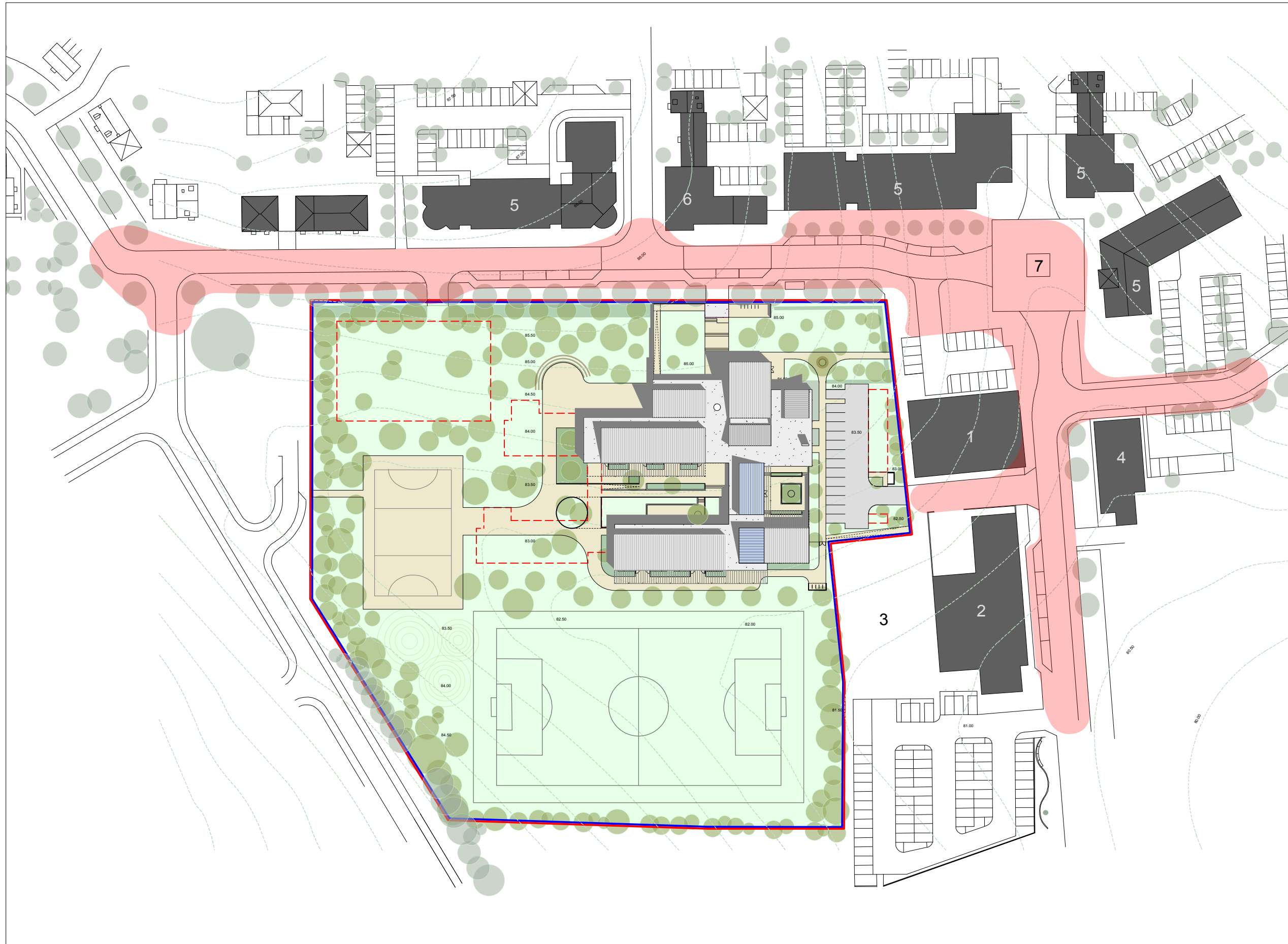


Picket Twenty (CofE) Primary Andover

Proposed Site and Future Context

- 1 Community Centre
- 2 Retail Store
- 3 Multi Games Court (TVBC)
- 4 Day Nursery
- 5 Mixed Use
- 6 Health Centre
- 7 Feature Square

Approximate area of Persimmon Homes Application 10/02993/FULLN - for an All Purpose Vehicle Route (APVR) : Developer to ensure carriageway to be sufficiently complete to permit construction of school - initial access to be from west of school site.



Planning Issue

North



1:1000 @ A3

P7475-A015 rev #

August 2011