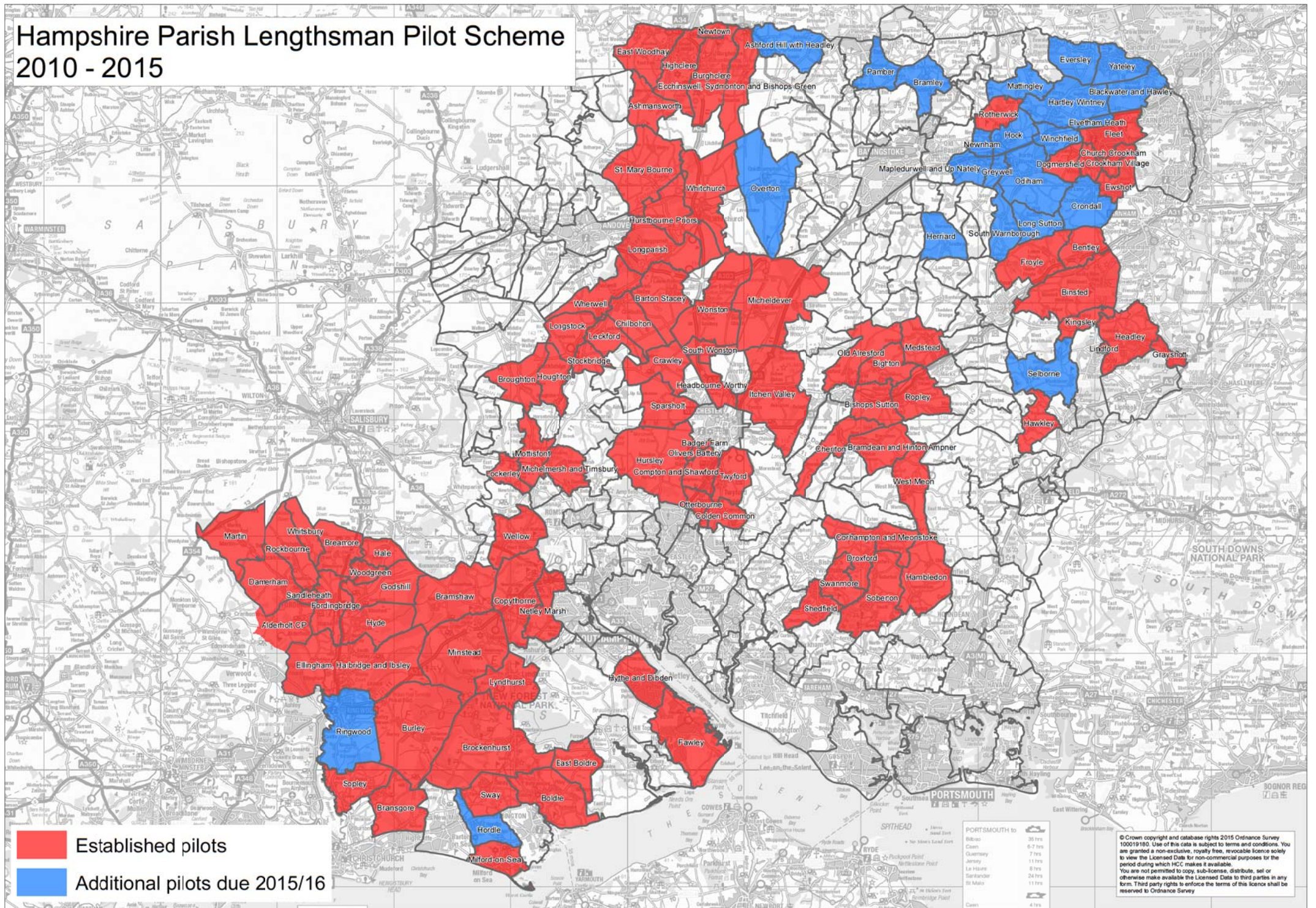


# Hampshire Parish Lengthsman Pilot Scheme 2010 - 2015



© Crown copyright and database rights 2015 Ordnance Survey 100019180. Use of this data is subject to terms and conditions. You are granted a non-exclusive, royalty free, revocable licence solely to view the Licensed Data for non-commercial purposes for the period during which HCC makes it available. You are not permitted to copy, sub-licence, distribute, sell or otherwise make available the Licensed Data to third parties in any form. Third party rights to enforce the terms of this licence shall be reserved to Ordnance Survey.