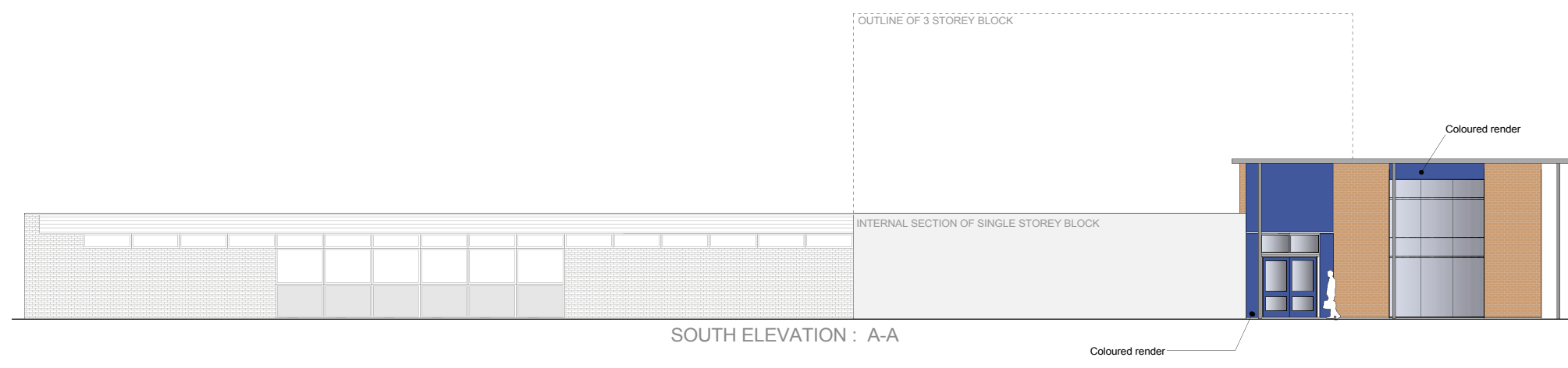
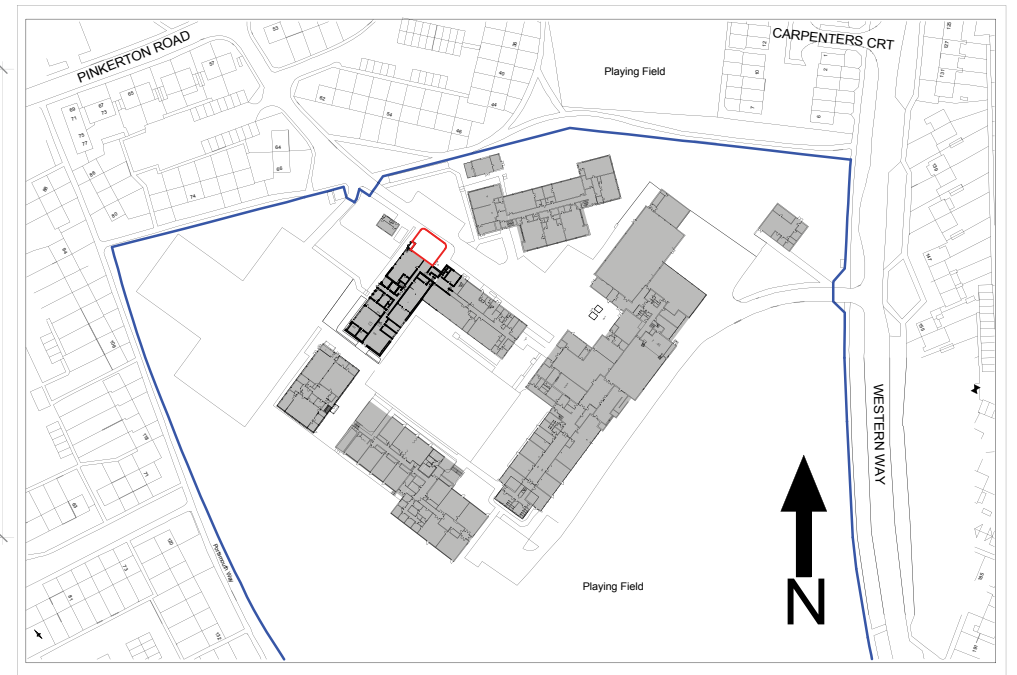


PROPOSED PLAN
DARTMOUTH BLOCK



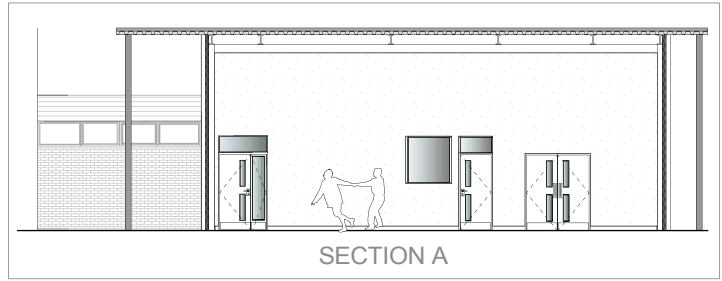
SOUTH ELEVATION : A-A

EAST ELEVATION

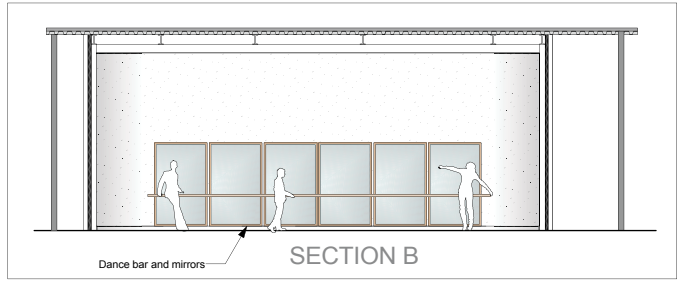


NORTH ELEVATION

WEST ELEVATION



SECTION A



SECTION B

rev	description	date	by

PLANNING ISSUE

<p>Hampshire County Council</p>	Property, Business and Regulatory Services, Three Minsters House, 76 High Street, Winchester SO23 8UL tel: (01962) 847801		
	PROJECT Aldworth Science College Diploma Centre New Performance Studio	SHEET CONTENTS Proposed layout and elevations	
SCALE 1:100 @ A1 - @ A3	DATE March 2010 DH	DRAWN. FILE REF.	DRAWING No. P8894/4156/001
REVISION		REVISION	