

Day Opportunities for Older People

Martha Fowler-Dixon
Head of Prevention and Early
Intervention



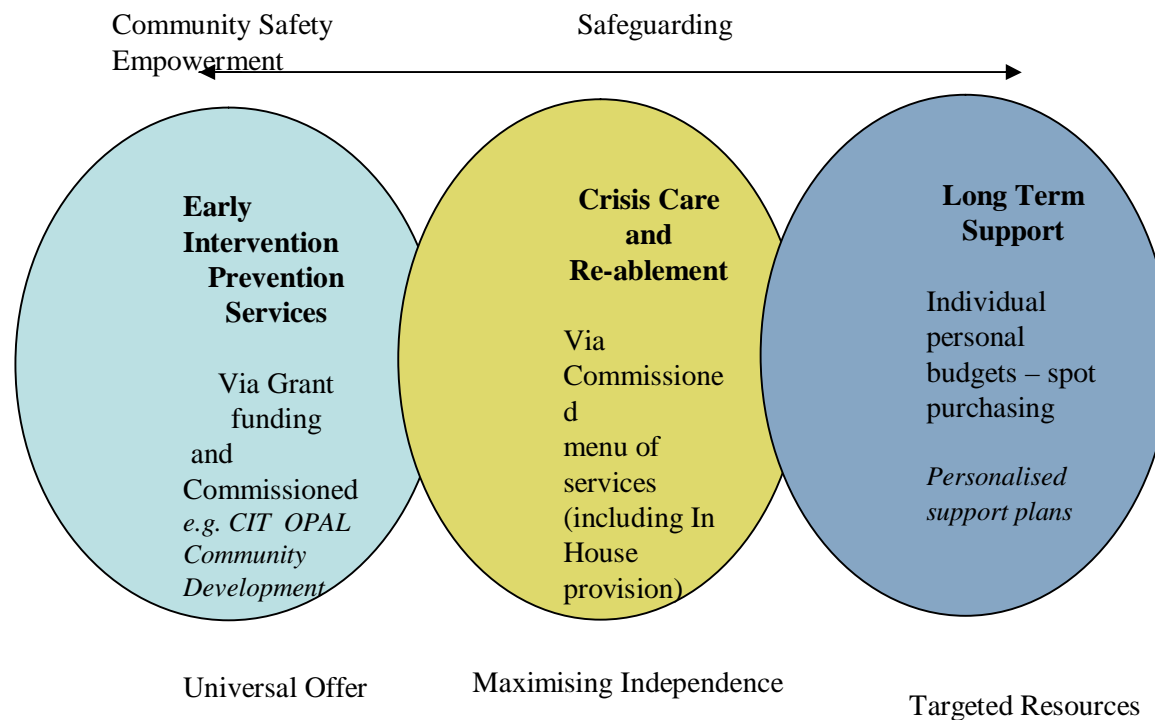
Hampshire
County Council

The Need for Change

- Fit with Strategic Direction
- Changes to Extra-care and Residential Care
- Contracts due to expire
- Demographics and expectations of older people

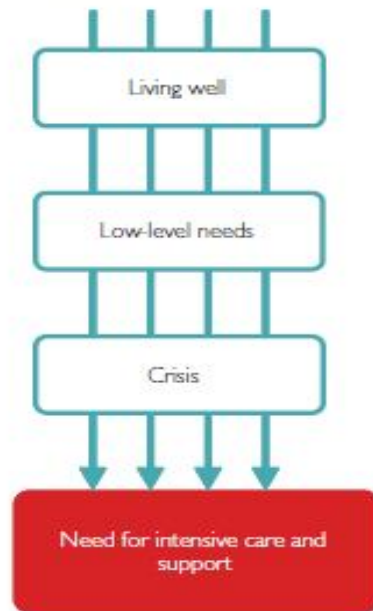
Departmental Vision

Care and Support Model

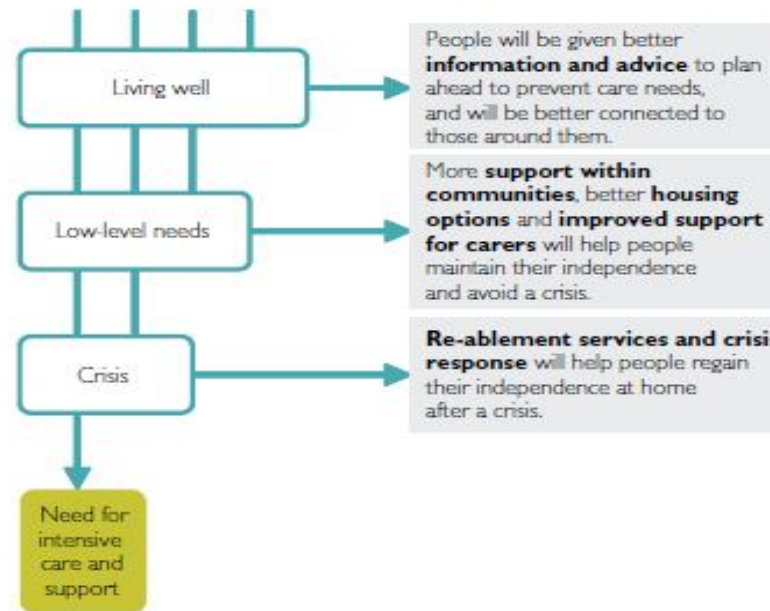


DH: Caring for our Future

The **current system** does not offer enough support until people reach a crisis point



The **new system** will promote wellbeing and independence at all stages to reduce the risk of people reaching a crisis point, and so improve their lives



Where are we going?

The departmental vision is for an emphasis on prevention, early intervention and re-ablement that will enable as many people as possible to remain active, healthy and engaged in their local communities for as long as possible, with care interventions increasingly being targeted and short-term, enabling people to return to normal life as quickly and effectively as possible.

What do People Need?

- Respite for carers (not principle function)
- Reconnect with community and expand social contact
- Maximise input from other agencies
- Link to OPMH strategy
- Help people remain fit and active
- Promote healthy eating
- Promote access to health and social care when needed

Accommodation (present)

- Purpose-built day centres
- Village halls
- Residential care homes
- Sheltered housing
- Old-style extra-care (part 2.5)



Feedback from Providers

- Community focused
- Preventative – pick up early
- An extra day, and keep person independent
- Local
- Flexible
- Active members not passive recipients

Feedback from Staff

- Some form of day care for high support needs essential
- Inter-generational
- Person-centred planning
- Small groups – shared interests
- Links to community groups
- Money to buy own services where possible

Consultation with Service Users

- Include existing and potential SU's
- Voice of older people
- OP Well-being forums
- Face to face, on line, questionnaires...
- “what services do you/will you want...”

Timeline

- Sep 2012 – July 2013
Minimal change to existing services
- July 2013 – July 2016 (1+1+1)
Competitive tender
greater move to re-ablement
- July 2014 onwards – establishment of new model.