

HAMPSHIRE COUNTY COUNCIL

Officer Decision Record

Decision Maker:	Director of Economy, Transport and Environment
Title:	LSTF Farnborough Station Accessibility (E5)

Contact name: Helen Merrills

Tel: 07718 147047

Email: Helen.merrills@hants.gov.uk

1. The decision:

- 1.1 That the Director approves the details of the Farnborough Station Accessibility improvements, as set out in this paper.
- 1.2 That the Director gives approval to procure, spend and enter into necessary contractual arrangements to implement this scheme, at a total estimated cost of £244,800. £95,000 to be funded from the Local Sustainable Transport Fund (LSTF), £94,000 from the Local Transport Plan (LTP) and £55,800 from developer contributions.

2. Reason(s) for the decision:

- 2.1 Funding of £244,800 has been secured from the 2014/15 LSTF, LTP and developer contributions to provide pedestrian and cycle accessibility improvements in Farnborough.
- 2.2 The scheme outlined in this document was derived from earlier work undertaken in the production of the Farnborough Town Access Plan (FTAP) which identified a number of improvements to the walking and cycling network throughout the town.
- 2.3 The scheme provides measures at various locations around Farnborough Town centre and Farnborough Main rail station. The proposals meet the aims of the LSTF and LTP and fulfils the County Council's corporate priorities.
 - (i) "Making Hampshire safer and more secure for all" by providing improved crossing points this will aid the more vulnerable to access local facilities.
 - (ii) "Maximising well being" by improving opportunities and ease with which people can access local facilities and services. Provision of cycle facilities will contribute in providing an alternative choice of travel to the car and promote a healthier life style.

- (iii) "Enhancing our quality of place" by providing improvements and updating facilities within Farnborough. This scheme will contribute to promoting walking and cycling.

2.4 The scheme also contributes towards the County Council's Strategic Plan 2013-2017;

- (i) Aim 2 Economy; providing pedestrian and cycle improvements will contribute in providing a more sustainable environment.
- (ii) Aim 3 Communities; Providing measures to improve facilities will help residents feel safer when walking and cycling particularly those residents who need to access their properties and local facilities along Alexandra Road.

3. Other options considered and rejected:

- 3.1 Provision of an uncontrolled crossing on the western side of Victoria Road roundabout was rejected as the location of the crossing would restrict access to 60/64 Victoria Road, Farnborough and potentially impact on the business located here. A controlled crossing was also considered and rejected as this raised operational and safety concerns.
- 3.2 Provision of a pedestrian island on Union Street was considered at the feasibility stage and rejected due to insufficient carriageway width.
- 3.3 To retain a short section of off road shared pedestrian and cycle facility on the north east side of Alexandra Road was rejected. Residents complained that safety was being compromised when accessing properties and walking along the path. Site observations confirmed cyclists were in conflict with pedestrians and were in near collision with trees and lamp columns along this residential route.
- 3.4 Rushmoor Cycle Forum requested a continuous 2 metre on road cycle route, this was not feasible due to insufficient available road space. A 1.5 metre cycle route is being provided.

4. Conflicts of interest:

- 4.1 Conflicts of interest declared by an Executive Member who is consulted by the officer which relates to the decision: None

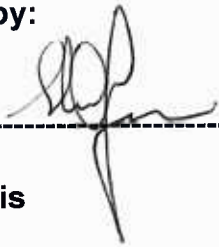
5. Dispensation granted by the Head of Paid Service:

- 5.1 None

6. Supporting Information:

6.1 None

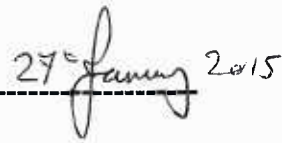
Approved by:



Stuart Jarvis

Director of Economy, Transport and Environment

Date:



HAMPSHIRE COUNTY COUNCIL

Decision Report

Decision Maker:	Director of Economy, Transport and Environment
Title:	LSTF Farnborough Station Accessibility (E5)

Contact name: Helen Merrills

Tel: 07718 147047

Email: helen.merrills@hants.gov.uk

1. Executive Summary

- 1.1 The purpose of this paper is to seek approval to procure, spend and enter into necessary contractual arrangements to implement this scheme, at a total estimated cost of £244,800. £95,000 to be funded from the 2014/15 Local Sustainable Transport Fund (LSTF), £94,000 from the Local Transport Plan (LTP) and £55,800 from developer contributions.
- 1.2 The scheme will provide improvements for pedestrians and cyclists which will consist of uncontrolled crossing points at various locations. Advisory cycle lanes and improved crossing facilities are to be provided along Alexandra Road and the provision of advisory cycle lanes on Kingsmead is proposed.
- 1.3 The improvements will link into existing facilities within the Town, improving accessibility to Farnborough Town and Farnborough Main rail station which will contribute in promoting increased walking and cycling.

2. Background

- 2.1. The Farnborough Town Access Plan (FTAP) was adopted by Hampshire County Council in November 2011 following workshops and public consultations. The measures out-lined in this report are a result of improvements identified in the FTAP to provide for pedestrian and cycle improvements.
- 2.2. The schemes proposed for implementation provide a package of works to provide accessibility measures to improve facilities for pedestrians and cyclists around the Town Centre and to and from the station utilising LSTF, LTP and developer funding.
- 2.3 The proposed walking and cycling improvements will link into and enhance existing facilities and will also provide a link into future transport and accessibility schemes identified in the FTAP as they come forward for implementation.

3. Finance

3.1	<u>Estimates</u>	<u>£'000</u>	<u>% of total</u>	<u>Funds Available</u>	<u>£'000</u>
	Design Fee	9.5	3.9	Developer contributions	55.8
	Client Fee	4.5	1.9		
	Supervision	10.8	4.4	HSTF LSTF fund	95.0
	Construction	220	89.8		
	Land	0	0	LTP	94.0
	Total	244.8		Total	244.8

3.2	<u>Revenue Implications</u>	<u>£'000</u>	<u>% Variation to Committee's budget</u>
	Net increase in maintenance expenditure	0	0.000%
	Capital Charges (Depreciation and notional interest charges)	24	0.015%

4. Programme

	Gateway Stage			
	3 - Project Appraisal	Start on site	End on site	4 - Review
Date	January 2015	February 2015	April 2015	April 2016

5. Scheme Details

5.1 The works include the following;

- (i) Provision of dropped kerbs and tactile paving identified at crossing points on Union Street and the junction of Union Street car park.
- (ii) Provision of dropped kerbs and tactile paving at identified crossing points on Elm Grove Road/Clockhouse Road junction

- (iii) Provision of dropped kerbs and tactile paving at identified locations along Westmead/Northmead and at the junction of Westmead/Northmead Princesmead car park
- (iv) Provision of a 1.5 metre pedestrian refuge with associated dropped kerbs and tactile paving on Victoria Road, east of the Elm Grove Road junction.
- (v) Provision of on road advisory cycle facilities along the length of Alexandra Road with associated works along the route and on the approach to Reading Road roundabout. Where there is sufficient carriageway width the cycle lanes will be marked to a width of 1.5 metres. This route when completed will link into existing cycle facilities.
- (vi) Relocation of the existing bus stop which is outside of the local shops on the south western side of Alexandra Road to a few metres north of its location. The bus stop has been struck several times by buses trying to navigate around parked vehicles.
- (vii) Relocation of a small section of parking due to the relocation of the bus stop.
- (viii) Provision of bollards near the retail area on the southern end of Alexandra Road.
- (ix) Provision of a pedestrian refuge and traffic islands and associated works, replacing the existing facilities near the junction of Cross Street/ Alexandra Road and the junction of Alexandra Road/Cambridge Road West. This will upgrade existing facilities and sufficient carriage way to provide for 1.5 metre cycle lanes
- (x) Replacement of drainage covers and localised resurfacing along the route to aid cyclist and pedestrians.
- (xi) Provision of cycle symbols and cycle signing and lining along the route.
- (xii) On the north east footpath of Alexandra Road shared use cycle signs will be taken down to provide a safer route for pedestrians.
- (xiii) Provision of 1.5 metre on road cycle advisory cycle lanes on Kingsmead. Work is ongoing in Kingsmead to provide a new cinema. Some minor changes to the design may need to be undertaken prior to works commencing due to the development work ongoing in this area. This part of the package of works will be tendered separately to avoid delays. This scheme will be utilising developer funding.

- (xiv) Highgate Lane crossing improvements –advance minor works to provide dropped crossings and enhancement to the traffic island have been undertaken by Rushmoor Borough Council.
- (xv) Safety audits have been undertaken during various stages of the design and amendments have been made to the design as required.

6. Departures from Standards

6.1 None

7. Community Engagement

- 7.1 The schemes outlined in this Project Appraisal have been taken forward as a result of consultations undertaken as part of the Farnborough Town Access Plan(FTAP) to improve accessibility in Farnborough Town. Some of the measures included in this report are also identified in the Rushmoor Borough Transport Statement.
- 7.2 An extensive consultation was undertaken as part of the FTAP in 2011 which included a two day public consultation event held in the local shopping centre during May 2011. An additional on line consultation was undertaken for the period 27 January 2014 to 23 February 2014 for the proposed cycle and accessibility improvements along Alexandra Road, Farnborough.
- 7.3 Plans and a questionnaire were provided on line and were also displayed in the reception area of Rushmoor Borough Council offices.
- 7.4 The Local Member Cllr Wall has been involved in various stages of this project and supports the proposals and is keen to see the works implemented. There is overall support for the proposals.
- 7.5 Rushmoor Borough Council have also consulted with the Rushmoor Cycle Forum regarding the cycle improvements. Comments received as part of the consultation have been taken into account during the detailed design process.
- 7.6 With regard to taking out a short section of shared use pedestrian and cycle facility on the north eastern side of Alexandra Road there has been mixed comments. There have been complaints from residents and cyclists regarding safety when cycling and walking on the section of shared use footpath due to conflict between pedestrians and cyclist. There are various obstacles along the footpath which is lined with trees and lamp columns. There are also a number of bus stops on Alexandra Road which are used on a regular basis by the public to wait for and alight from buses.

Residents state there is an issue with visibility when entering and leaving their driveways and some cyclist have been observed cycling without regard for others safety as there is insufficient footway to accommodate cyclist and pedestrians and provide a safe route. The provision of the on road section will provide a more formal route linking into existing cycle facilities.

- 7.7 As part of the Kingsmead cycle route some minor amendments may be required to the current design to enhance the cycle route due to the building of a cinema development. Councillor Wall is generally supportive of this element of works but would see a benefit in any enhancements to the route.

8. Statutory Procedures

- 8.1 The bus shelter located at the local shops on Alexandra Road was removed by Rushmoor Borough Council due to safety issues. Rushmoor Borough Council will be seeking planning permission for the relocation of the bus shelter.
- 8.2 A Traffic Regulation Order to amend the parking is required. Rushmoor Borough Council are undertaking the Statutory Procedure.

9. Land Requirements

- 9.1 None, all work will be undertaken on highway land.

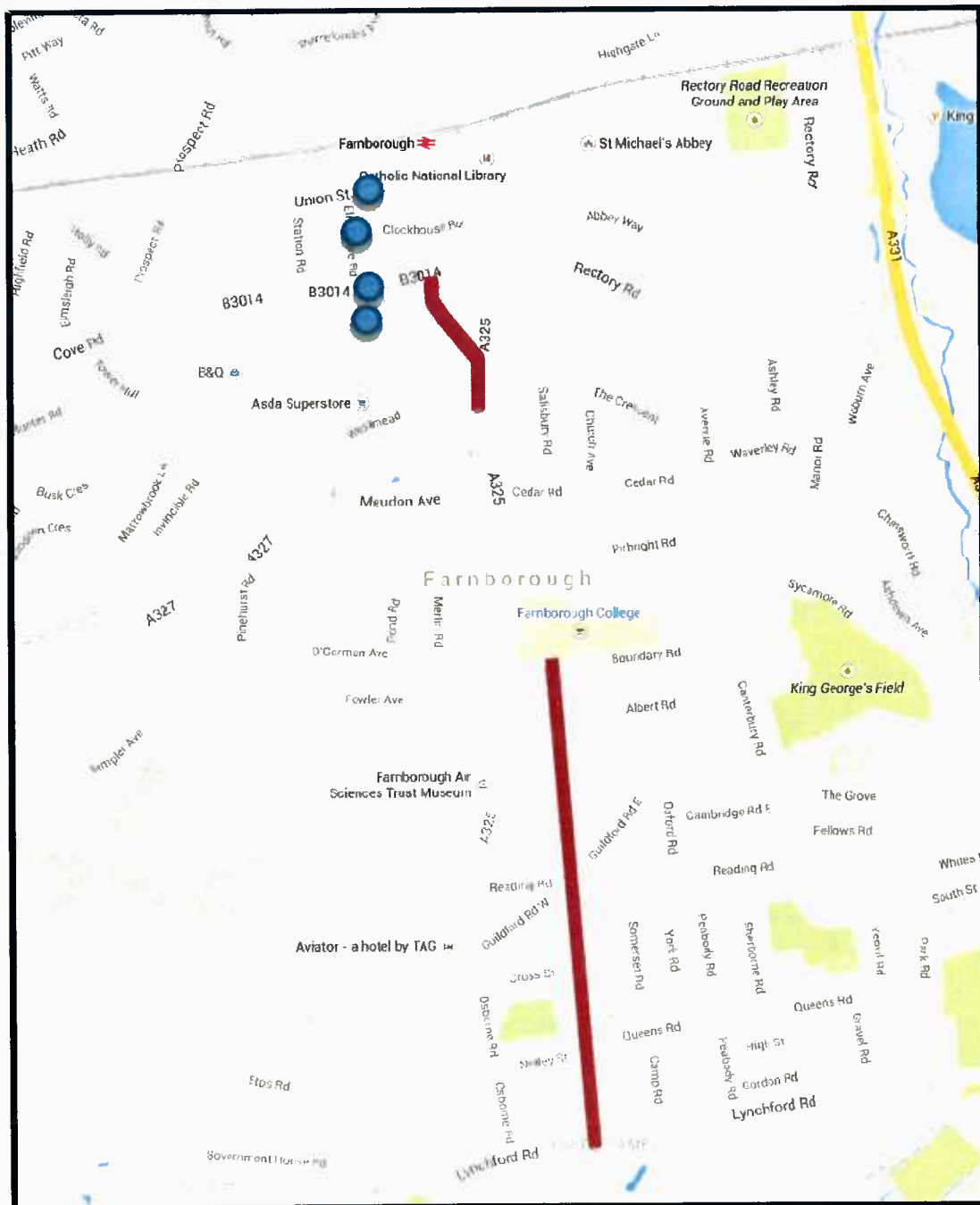
10. Maintenance Implications

- 10.1 It is considered that the measures covered in this report will not have impacts requiring further specific actions by the Council above those already established in its existing policies and working procedures.

11. Recommendation(s)

- 11.1 That the Director approves the details of the Farnborough Station accessibility improvements, as set out in this paper.
- 11.2 That the Director gives approval to procure, spend and enter into necessary contractual arrangements to implement this scheme, at a total estimated cost of £244,800. £95,000 to be funded from the Local Sustainable Transport Fund (LSTF), £94,000 from the Local Transport Plan (LTP) and £55,800 from developer contributions.

Location Plan



TITLE : LSTF Farnborough Station Accessibility (E5)

KEY :

- New crossing point
- New cycle lane



LTP3 Priorities and Policy Objectives

3 Priorities

- To support economic growth by ensuring the safety, soundness and efficiency of the transport network in Hampshire
- Provide a safe, well maintained and more resilient road network in Hampshire
- Manage traffic to maximise the efficiency of existing network capacity, improving journey time reliability and reducing emissions, to support the efficient and sustainable movement of people and goods

14 Policy Objectives

- Improve road safety (through delivery of casualty reduction and speed management)
- Efficient management of parking provision (on and off street, including servicing)
- Support use of new transport technologies (i.e. Smartcards; RTI; electric vehicle charging points)
- Work with operators to grow bus travel and remove barriers to access
- Support community transport provision to maintain 'safety net' of basic access to services
- Improve access to rail stations, and improve parking and station facilities
- Provide a home to school transport service that meets changing curriculum needs
- Improve co-ordination and integration between travel modes through interchange improvements
- Apply 'Manual for Streets' design principles to support a better balance between traffic and community life
- Improve air quality
- Reduce the need to travel, through technology and Smarter Choices measures
- Promote walking and cycling to provide a healthy alternative to the car for short local journeys to work, local services or school

Develop Bus Rapid Transit and high quality public transport in South Hampshire,
to reduce car dependence and improve journey time reliability

Outline and implement a long term transport strategy to enable sustainable
development in major growth areas

Other

Please list any other targets (i.e. National Indicators, non LTP) to which this
scheme will contribute.

CORPORATE OR LEGAL INFORMATION:**Links to the Corporate Strategy**

Hampshire safer and more secure for all:	Yes
Corporate Improvement plan link number (if appropriate):	
Maximising well-being:	Yes
Corporate Improvement plan link number (if appropriate):	
Enhancing our quality of place:	Yes
Corporate Improvement plan link number (if appropriate):	

Other Significant Links

Links to previous Member decisions:		
<u>Title</u>	<u>Reference</u>	<u>Date</u>
Direct links to specific legislation or Government Directives:		
<u>Title</u>	<u>Date</u>	

Section 100 D - Local Government Act 1972 - background documents

The following documents discuss facts or matters on which this report, or an important part of it, is based and have been relied upon to a material extent in the preparation of this report. (NB: the list excludes published works and any documents which disclose exempt or confidential information as defined in the Act.)

DocumentLocation

None

Impact Assessments

1. Equalities Impact Assessment:

1.1. The proposals in this report have been developed with due regard to the requirements of the Equality Act 2010, including the Public Sector Equality Duty and the Council's equality objectives. The website contains a summary [assessment of the impacts](#) on developing Hampshire's highway network and transport systems.

1.2. Statutory considerations:

Impact	
Age	low
Disability	low
Sexual Orientation	none
Race	none
Religion and belief	none
Gender Reassignment	none
Sex	none
Marriage and civil partnership	none
Pregnancy and maternity	none
Other policy considerations	
Poverty	Medium – improvements to none motorised facilities will provide improved access to local facilities
Rurality	none
Other factors	none
Geographical impact	none

Please give a brief explanation of each impact you have listed as low/medium/high.

Providing improved pedestrian crossing areas which include tactile paving, crossing points and dropped kerbs will aid the less able when crossing the road and walking to nearby facilities. The provision of the cycle route will provide an improved facility and alternative choice for those who would like to travel by other modes of transport other than the car. The improvements will benefit those who walk and cycle and promotes an alternative and more healthy option of travel to local facilities.

2. **Impact on Crime and Disorder:** None

3. **Climate Change:**

3.1 How does what is being proposed impact on our carbon footprint / energy consumption?

The current policy of Reduce, Recycle, Reuse will be implemented such that excavated material where possible, will be reused as sustainable materials on future schemes.

3.2 How does what is being proposed consider the need to adapt to climate change, and be resilient to its longer term impacts?

The scheme proposals are expected to have a positive impact on climate change by improving facilities for pedestrians and cyclists, there by offering a healthy alternative travel opportunity contributing to the overall reduction in carbon emissions.