

FIGURE SS.030

URS
 URS Scott Wilson Ltd
 15,000
 AH JS
 15,000
 SOUTHERN EXTENSION:
 ALTERNATIVE HABITAT
 CREATION
 MORTIMER QUARRY
 FINAL
 AMENDED/ADDITIONAL DOCUMENTS
 RECEIVED
 - 7 JUN 2011
 COUNTY PLANNING
 HAMPSHIRE COUNTY COUNCIL
 License number 0100031673
 Reproduced from Ordnance Survey digital map
 data © Crown copyright 2011. All rights reserved.

SS.008

Scale at A3 : 1:5,000

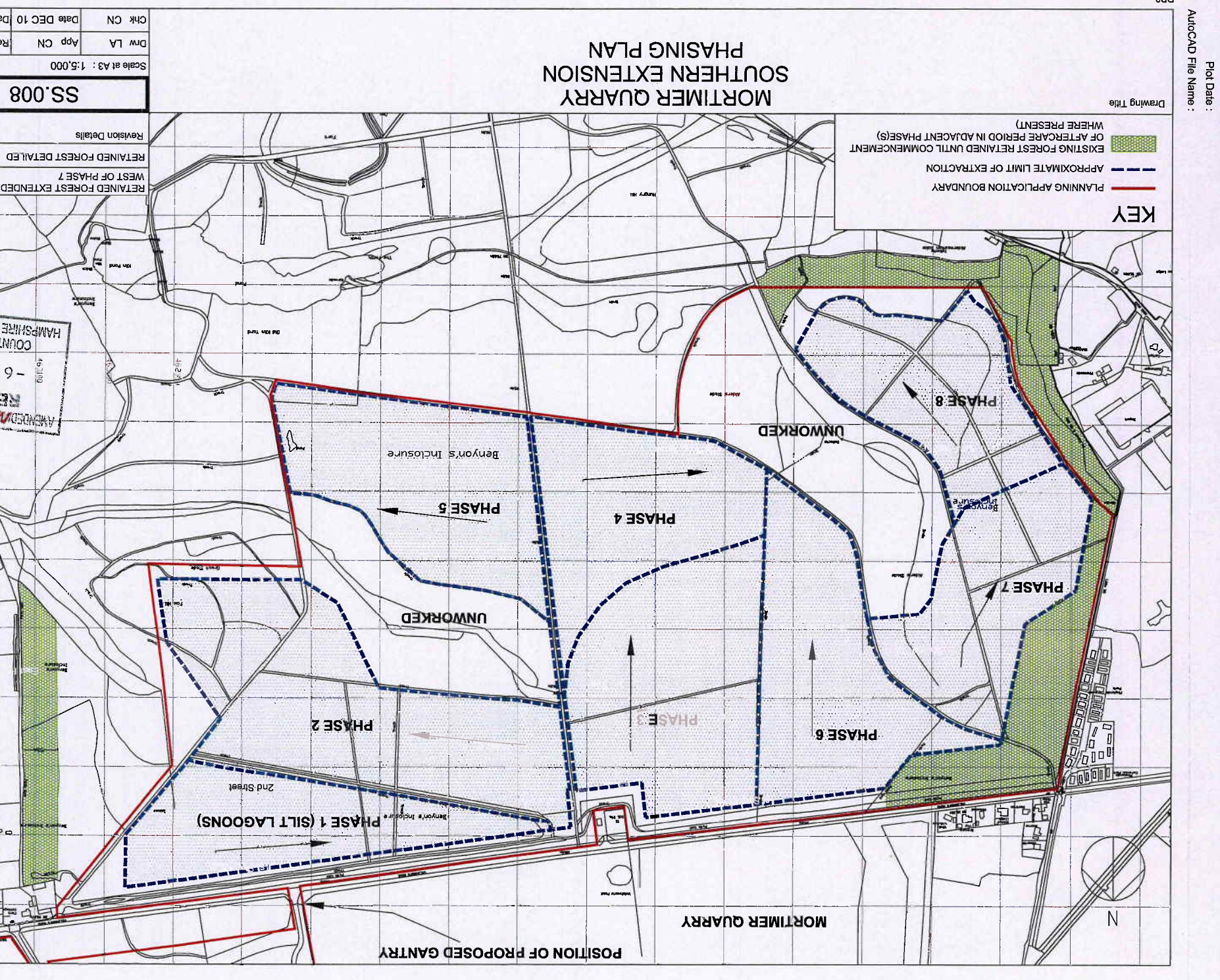
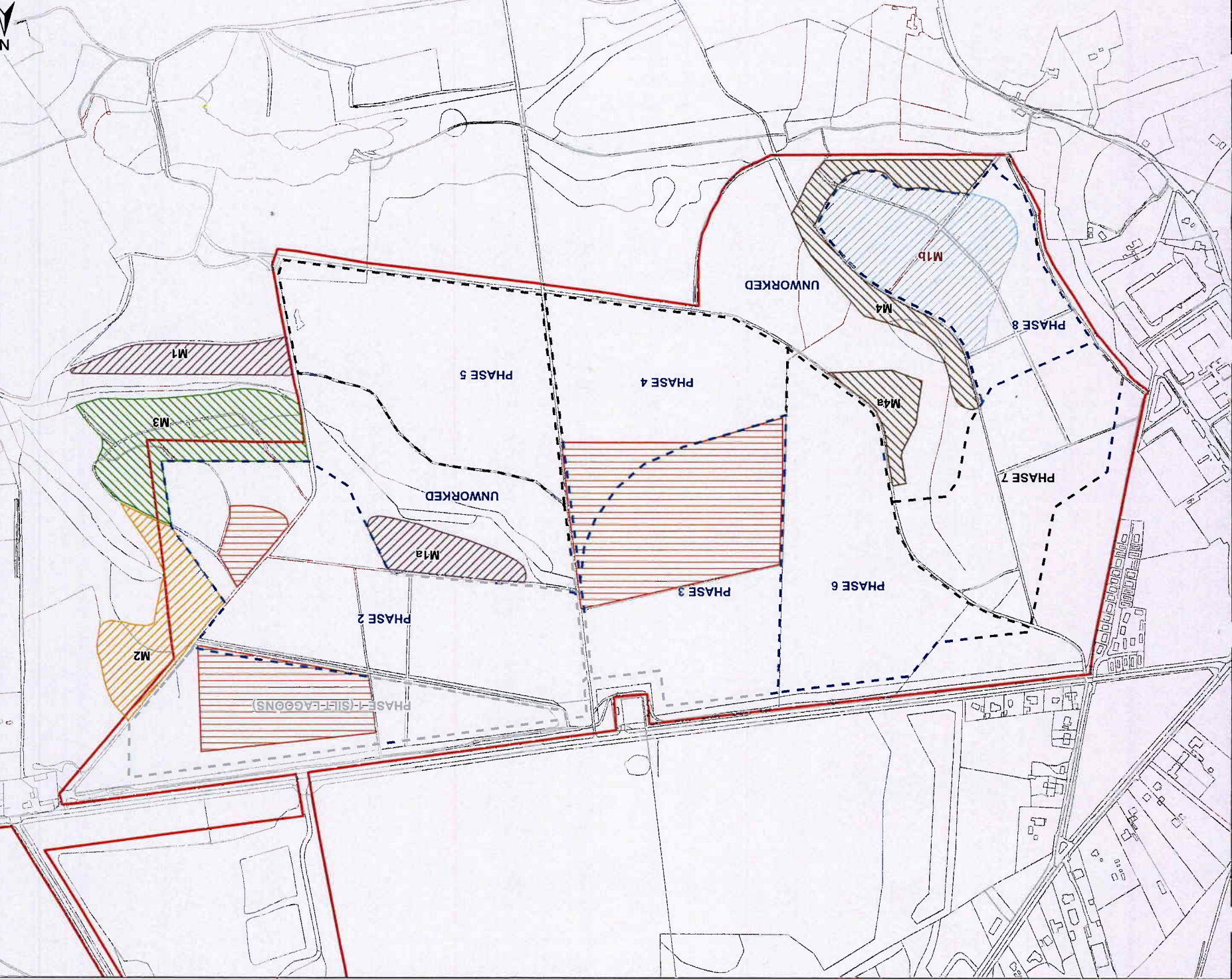
Drw LA App CN Rev B
 Date DEC 10 Date AUG 11
 Hanson
 HERTFORDSHIRE GROUP

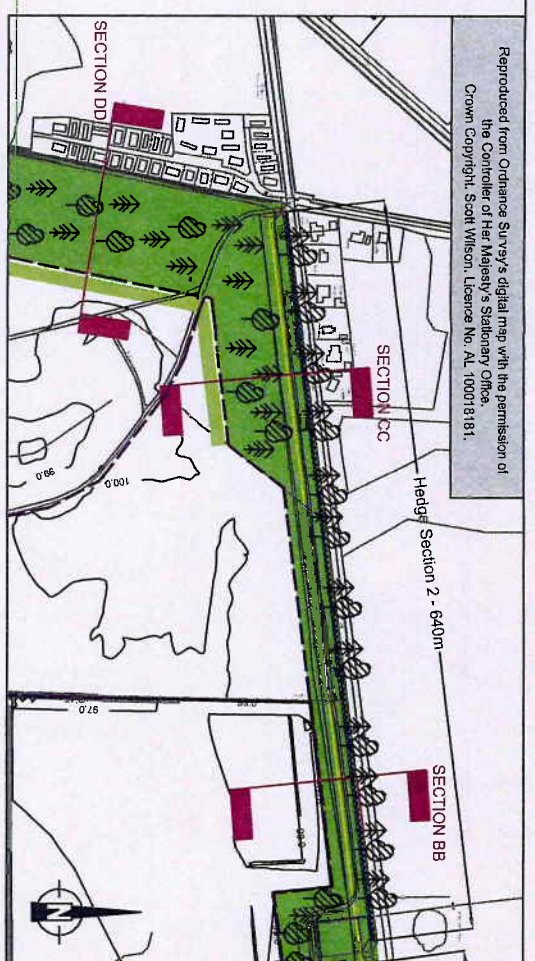
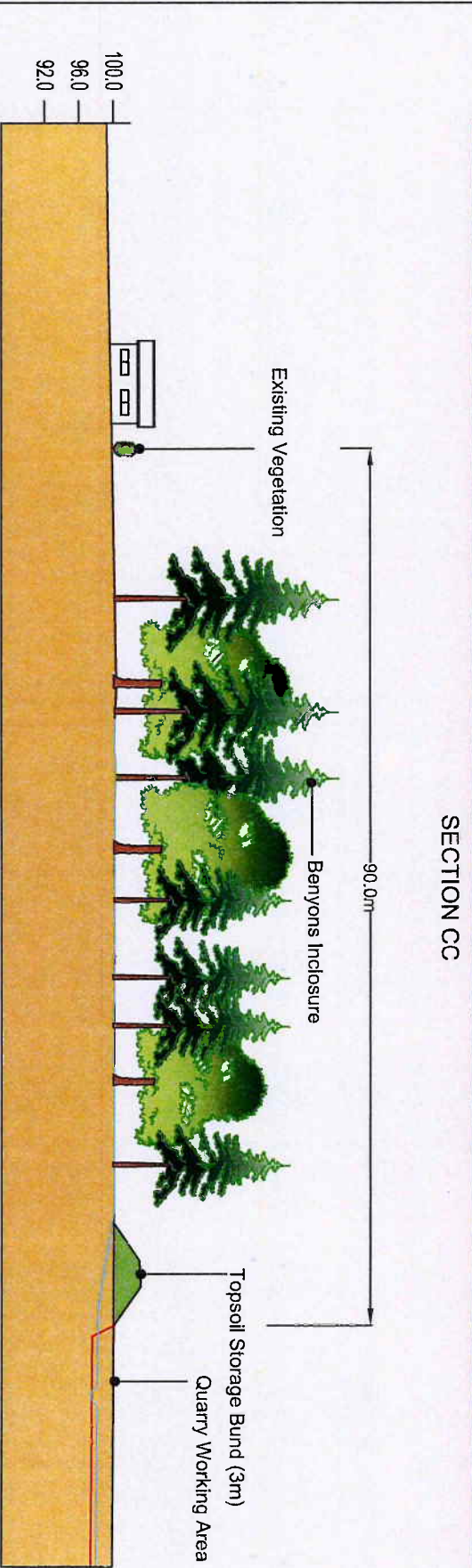
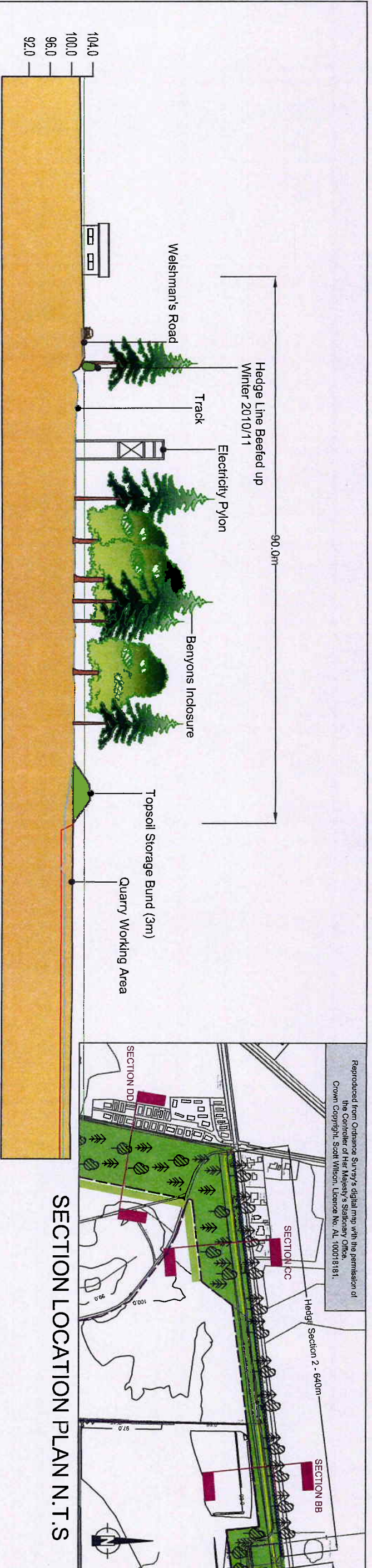
Revision Details

By	Date	Check	Check	Suffix
DM	JUN 11	CN	A	A
DM	AUG 11	CN	B	B

RETAINED FOREST EXTENDED TO THE WEST OF PHASE 7
 RETAINED FOREST DETAILED

AMENDED/ADDITIONAL DOCUMENTS
 RECEIVED
 - 6 SEP 2011
 COUNTY PLANNING
 HAMPSHIRE COUNTY COUNCIL





SECTION LOCATION PLAN N.T.S

SPECIFICATION AS FOLLOWS:
Cultivate and plant into moist, friable soil, free from compaction and that is not waterlogged, frozen or snow covered.

Contractor is to be aware of the location of all services connected to the buildings including gas, water, electricity, drainage, both surface water and foul, telephone lines etc. The utmost care is to be taken to avoid damage to any services whilst undertaking tree work, grubbing out, rotavation or any other work. Any damage to such services caused by lack of forethought or care by the contractor is to be corrected at the contractor's expense including any subsequent damage to structure or materials.

All plants, except *Ilex aquifolium* should be notch planted into a T-shaped opening of sufficient size for the roots to accommodate and heeled in at 4No. per linear meter in a double staggered row. *Ilex aquifolium* to be pit planted in a pit large enough to ensure adequate root spread.

Immediately after planting shrubs, carefully cut back any damaged, dead or diseased branches and remove any weak, thin or malformed growth. Where, and to the extent, appropriate for the species cut back to encourage growth.

Bare-root shrubs to be planted between mid-November and mid-March.

All planting quantities are scaled from landscape plan. Contractor recommended to check quantities by reference to plan or site visit if required.

The contractor is to provide 5 years maintenance on all plants. Any new plants supplied under the contract which fail within this period are to be replaced at the contractor's expense.

Hedge plants are to be protected by a 60cm spiral guard with a 100cm cane driven 4.0cm into the ground with the exception of *Ilex aquifolium* to be protected with 300mm Netlon mesh.

NOTE:
Landscape plans indicative only.
Landscape specification for information purposes only

AMENDED/REMOVED DOCUMENTS
RECEIVED
- 7 JUL 2011

COUNTY PLANNING
HAMPSHIRE COUNTY COUNCIL

SS.022

Scale at A3 : N.T.S

Dwg	LA	App	CN	Rev	A
CHK	NHW	Date	16/12/10	Date	02/06/11



KEY

	Site Survey Ground Level		Restoration Landform
	Quarry Void		Soil Storage
	Proposed Hedge (See Location Plan)		

NATIVE HEDGEROW

Species	Percentage (%)	Height (cm)	Root Condition	Density
<i>Corylus avellana</i>	5	40-60	BR	50 cm Centres
<i>Crataegus monogyna</i>	40	40-60	BR	50 cm Centres
<i>Fagus sylvatica</i>	20	40-60	BR	50 cm Centres
<i>Prunus spinosa</i>	19	40-60	BR	50 cm Centres
<i>Crataegus laevigata</i>	8	40-60	BR	50 cm Centres
<i>Ilex aquifolium</i>	4	40-60	CG	50 cm Centres
<i>Rhamnus cathartica</i>	4	40-60	BR	50 cm Centres

PINELANDS LOCAL
LANDSCAPE DETAIL

Drawing Title



MORTIMER QUARRY
SOUTHERN EXTENSION DEVELOPMENT STAGE 7

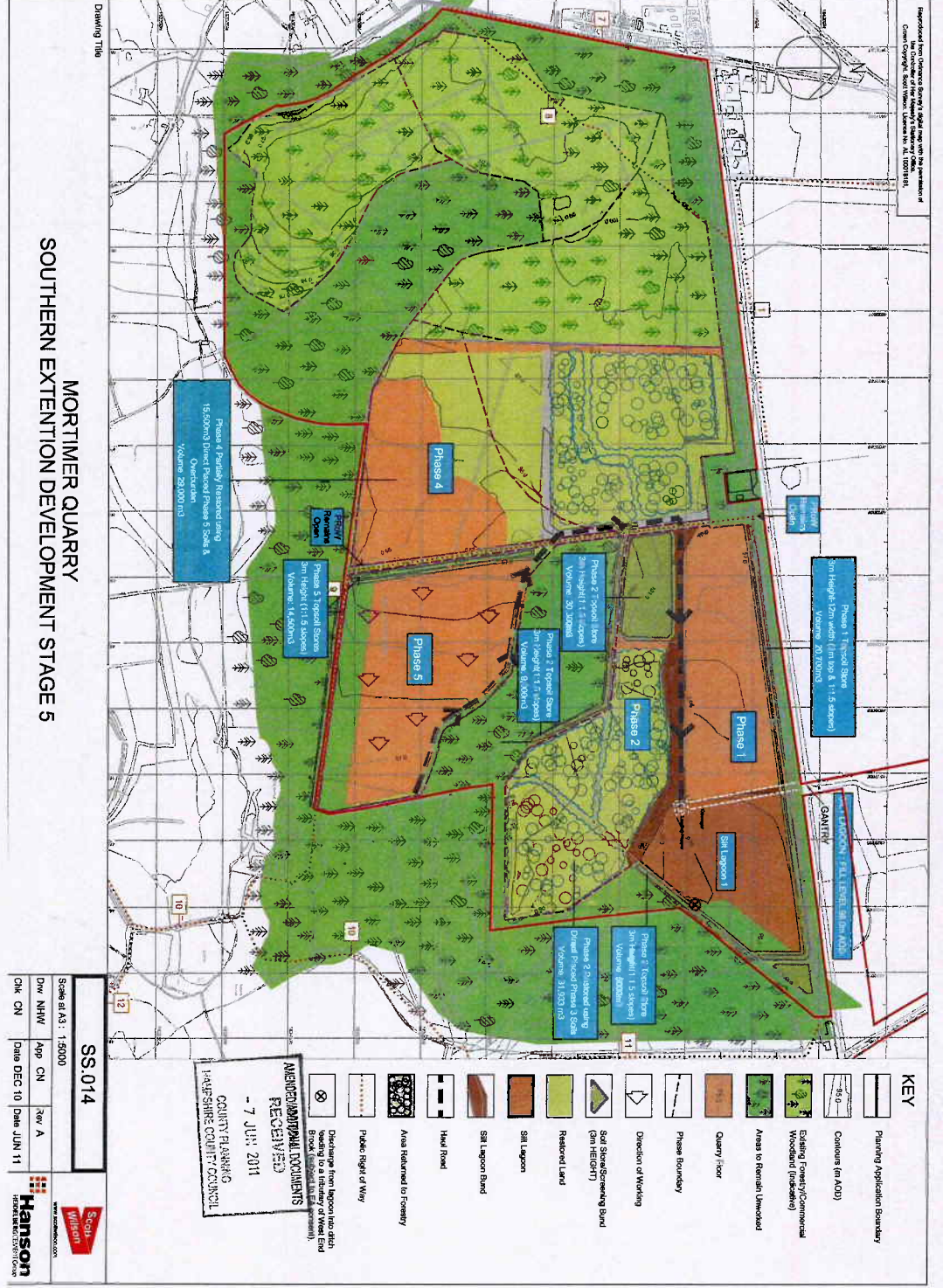
SS.016

Scale at A3: 1:5000

Dwg: NHW App: CN Rev: A

CHK: CN Date: DEC 10 Date: JUN 11

Hanson



MORTIMER QUARRY
SOUTHERN EXTENSION DEVELOPMENT STAGE 5

SS.014

Scale at A3: 1:5000

Dwg: NHW App: CN Rev: A

CHK: CN Date: DEC 10 Date: JUN 11

Hanson



MORTIMER QUARRY
SOUTHERN EXTENSION DEVELOPMENT STAGE 8

SS.017

Scale at A3: 1:5000

Dwg: NHW App: CN Rev: A

CHK: CN Date: DEC 10 Date: JUN 11

Hanson



MORTIMER QUARRY
SOUTHERN EXTENSION DEVELOPMENT STAGE 6

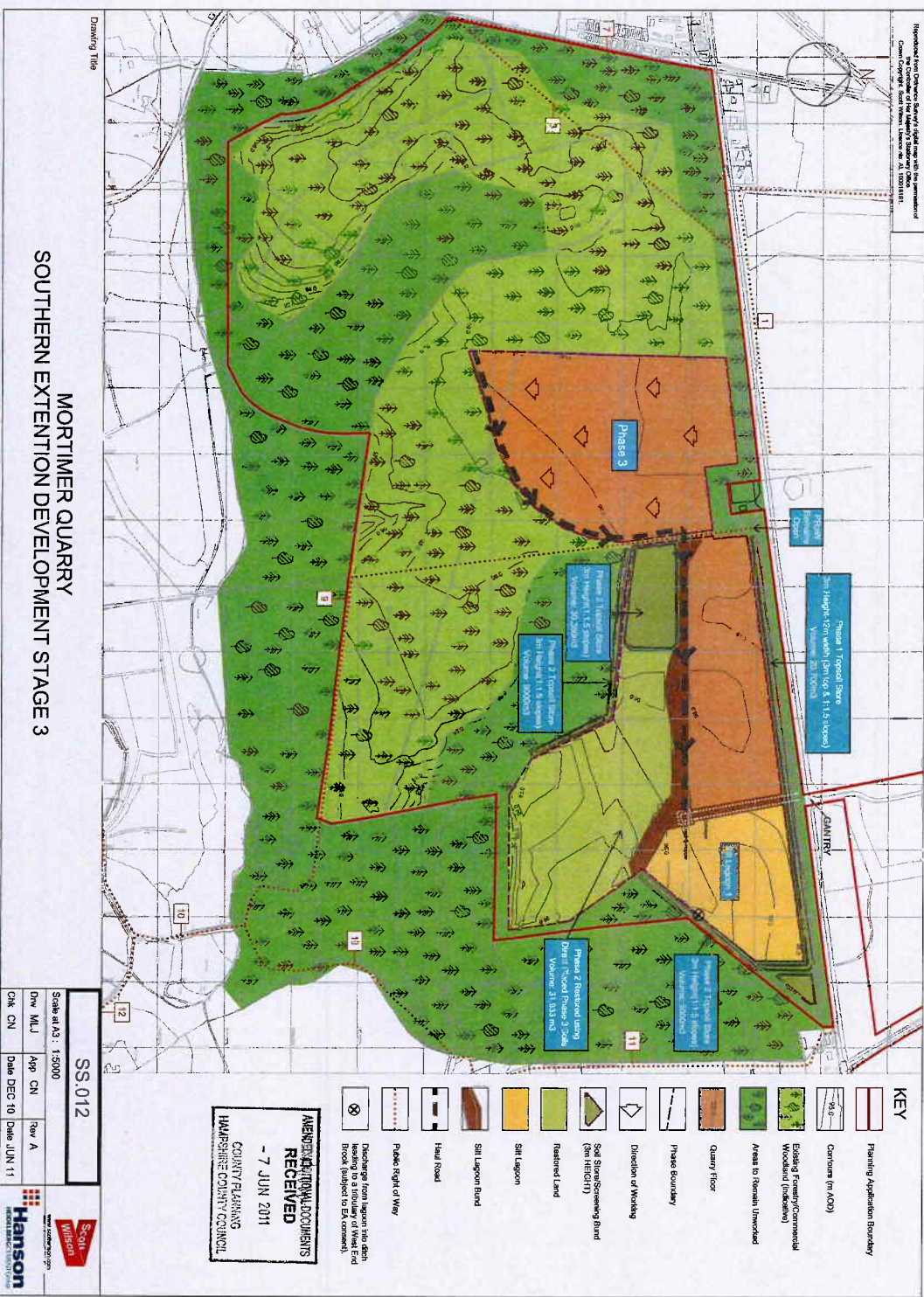
SS.015

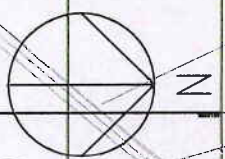
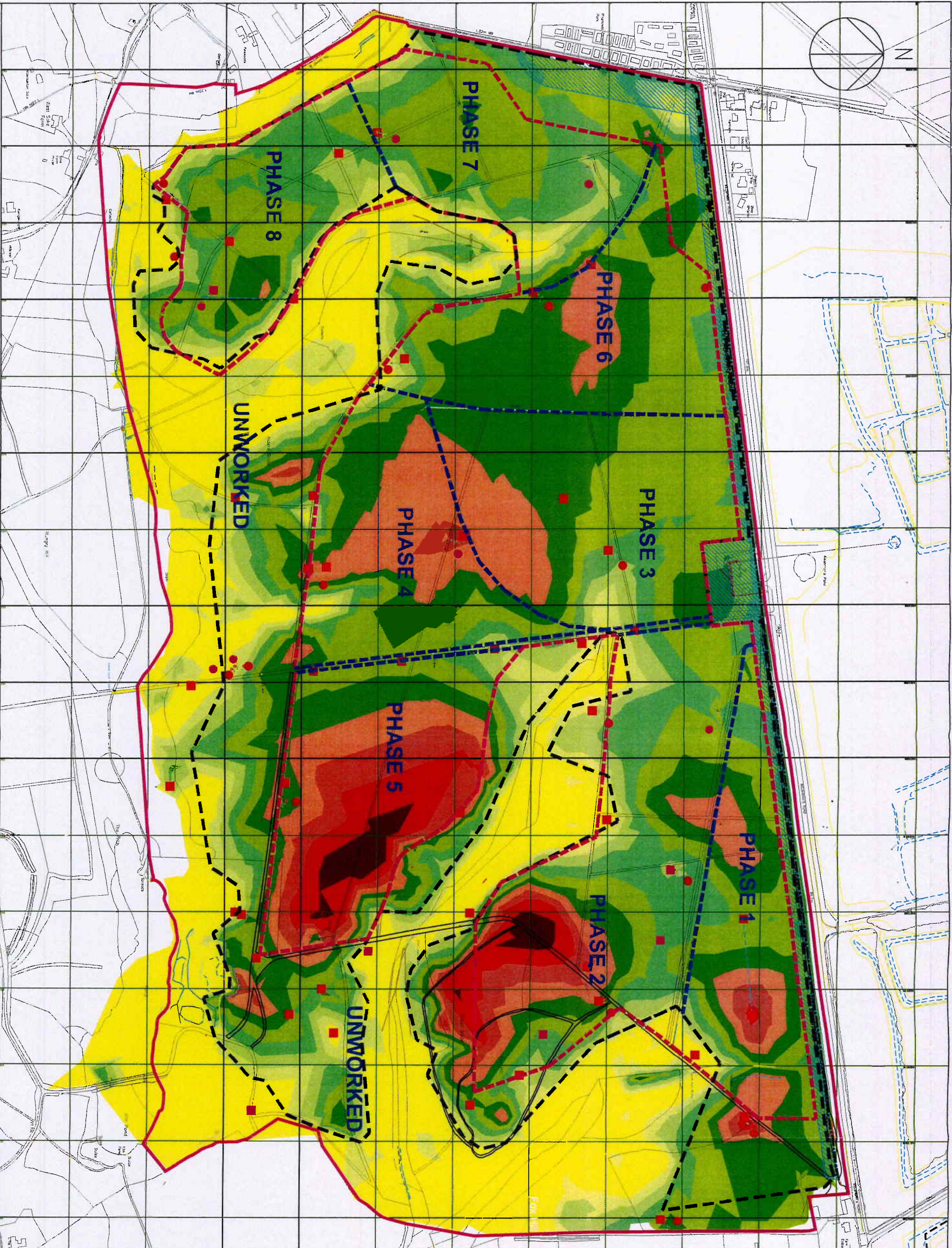
Scale at A3: 1:5000

Dwg: NHW App: CN Rev: A

CHK: CN Date: DEC 10 Date: JUN 11

Hanson



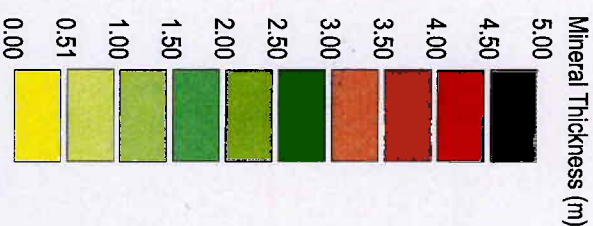


Drawing Title

**MORTIMER QUARRY
SOUTHERN EXTENSION
GEOLOGICAL RESOURCE PLAN**

Key

- Benyon's Inclosure
- Limit of Extractable Mineral
- Proposed Extraction Limit
- Phase Boundaries
- Southernmost H/V Electricity Cable (of 3 cables)
- Standoff from HV cable (16m) and residences (50m) for track and 3m high soil bund
- Trial Pit
- Borehole



**AMENDED/ADDITIONAL DOCUMENTS
RECEIVED
- 7 JUN 2011
COUNTY PLANNING
HAMPSHIRE COUNTY COUNCIL**

SS.026

Scale at A3 : 1:5,000

Drw LA	App CN	Rev A
Chk CN	Date JAN 11	Date JUN 11

