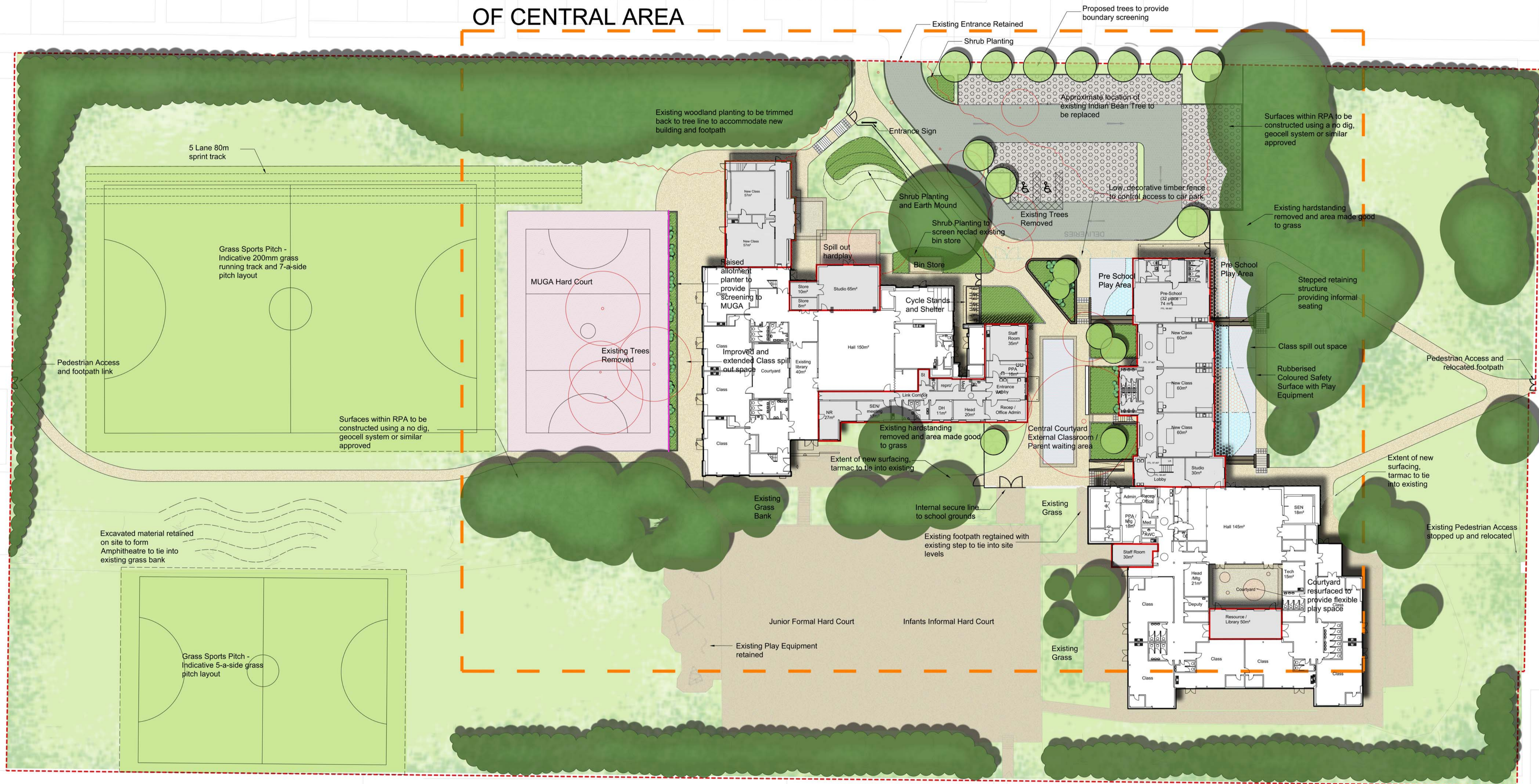


REFER TO DRAWING 702 FOR DETAIL OF CENTRAL AREA



- GENERAL ARRANGEMENT - KEY**
- Site Boundary
 - Tarmac to Pedestrian Areas
 - Coloured Tarmac to Pedestrian Areas
 - Contrasting concrete block paving to define external spaces
 - Rubber Safety Surface to Play Areas
 - Tarmac to Vehicular Areas
 - Gravel to parking bays
 - Tarmac to MUGA Court
 - Concrete Base to Store
 - Existing hard surfaces retained
- FENCING**
- 1800mm High Secure Line fence and matching gates
 - Timber 'Playtime' 1100mm High Fence and matching Gates
 - Ballstop 1800mm High Fence to protect school
- SOFTWORKS**
- Existing Trees Retained
 - Existing Trees Removed
 - Proposed Tree Planting
 - Proposed Specimen Shrub Planting
 - Proposed Planting Bed
 - Proposed Allotment Gardens
 - Proposed Amenity Grass to tie in with existing

PLANNING



HCC Property Services,
Three Minsters House,
76 High Street, Winchester SO23 8UL.
tel: (01962) 847801

Notes

- 1 This drawing is © copyright Hampshire County Council 2012. No unauthorised reproduction permitted. All rights reserved.
- 2 No dimensions are to be scaled from this drawing
- 3 This map is reproduced from Ordnance Survey material with the permission of Ordnance Survey on behalf of the controller of Her Majesty's Stationery Office © Crown Copyright. Unauthorised reproduction infringes Crown Copyright and may lead to prosecution or civil proceedings. (100019180), (2012)

rev	description	date	by
A	PRE-PLANNING	15/11/13	AD
B	PLANNING	03/02/14	AL

PROJECT
**Merton Junior & Infant School
1FE Extension**

SCALE
1:350 @ A1

SHEET CONTENTS
**Proposed Junior & Infant
Extensions
General Arrangement - Site**

DRAWING No. **P09156-700**
FILE REF. *P9156-Development Plan*

Property Services



REVISION
B