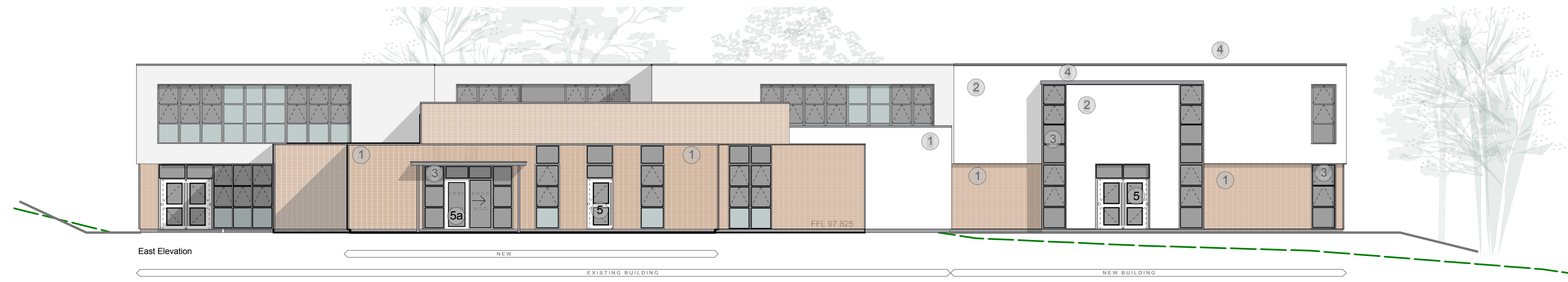


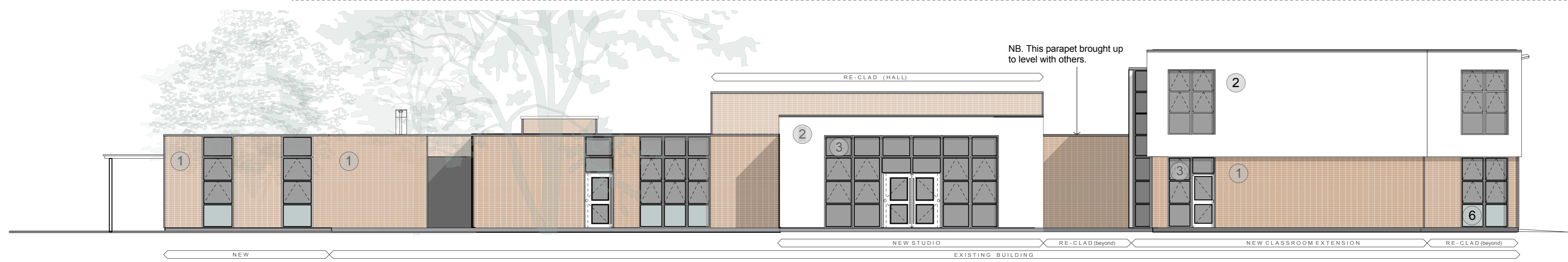


South Elevation

datum 95.000



East Elevation



North Elevation

datum 95.000

External Finishes

- ① Brick slip insulation panel in stack bond (FE71-20 Amari Aubergine). Mortar pointed. Perimeter powder coated aluminum flashing details to match existing (jambes, cills, corners). To match colour and texture
- ② White insulated render finish. To match colour and texture
- ③ Aluminium window system with glazing and panels (to match re-clad)
- ④ Powder coated aluminum parapet capping, on to raised parapet. To match
- ⑤ Powder coated aluminum entrance / exit door with level access.
- ⑤a Powder coated aluminum automatic entrance / exit door with level access.
- ⑥ HPL insulated panel to match existing re-clad.



West Elevation



rev	description	date	by
ER1	Employers Requirements Issue	18.11.13	SGM
P1	Planning	06.02.14	SGM

Notes

- This drawing is © copyright Hampshire County Council 2013. No unauthorised reproduction of any kind is permitted.
- No Dimensions to be scaled from this drawing
- This map is reproduced from Ordnance Survey material with the permission of Ordnance Survey on behalf of the controller of Her Majesty's Stationery Office © Crown copyright. Unauthorised reproduction infringes Crown Copyright and may lead to prosecution or civil proceedings. (100019180), (2013)

<p>Hampshire County Council</p>		<p>HCC Property Services, Three Minsters House, 76 High Street, Winchester SO23 8UL. tel: (01962) 847801</p>	
<p>PROJECT Merton Junior & Infant School 1 FE Extension</p>		<p>SHEET CONTENTS Junior School Proposed Elevations</p>	
<p>SCALE 1:100@A1 @A3</p>	<p>DATE 22/07/13</p>	<p>DRAWN GN</p>	<p>CHKD.</p>
<p>DRAWING No. P09156 - 300</p>		<p>REVISION P1</p>	

PLANNING