

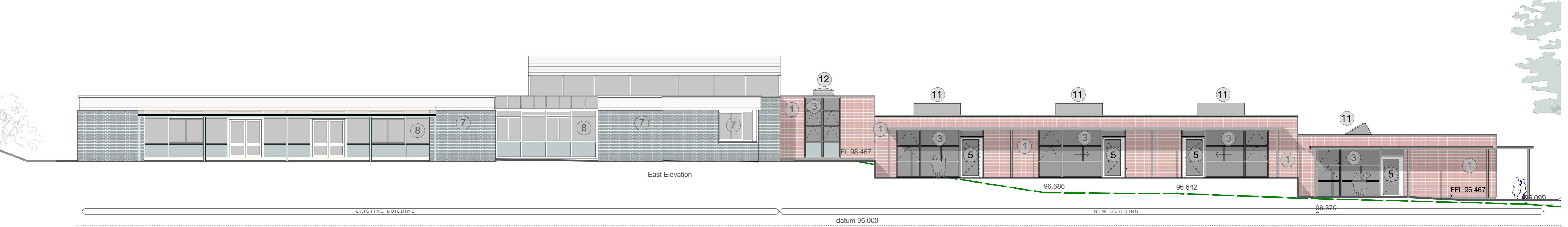


West Elevation

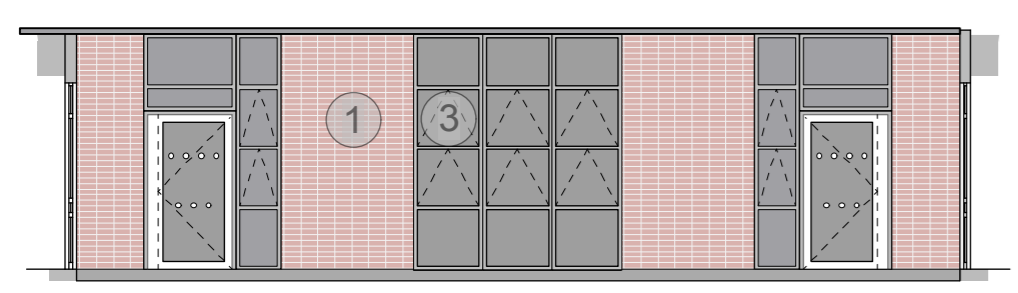
- External Finishes**
- 1 Brick slip insulation panel in stack bond (Colour to be agreed). Mortar pointed. Perimeter powder coated aluminum flashing details to match Jnr re-clad (jamb, cills, corners)
 - 2 White insulated render finish. To match colour and texture
 - 3 Aluminium window system with glazing and panels (to match re-clad)
 - 4 Powder coated aluminum parapet capping, on to raised parapet. To match
 - 5 Powder coated aluminum entrance / exit door with level access.
 - 5a Powder coated aluminum automatic entrance / exit door with level access.
 - 6 HPL insulated panel to match existing re-clad.
 - 7 Existing brickwork.
 - 8 Existing aluminium / steel window system.
 - 9 Existing PVC Window System.
 - 10 Existing PVC Cladding
 - 11 Pitched rooflight.
 - 12 Domed rooflight.



North Elevation



East Elevation



Courtyard - North Elevation



rev	description	date	by
A	Courtyard elevation added	29.10.13	GN
ER1	Employers Requirements Issue	20.11.13	SGM
P1	Planning Issue	06.02.14	SGM

Notes

- This drawing is © copyright Hampshire County Council 2013. No unauthorised reproduction of any kind is permitted.
- No Dimensions to be scaled from this drawing
- This map is reproduced from Ordnance Survey material with the permission of Ordnance Survey on behalf of the controller of Her Majesty's Stationery Office © Crown copyright. Unauthorised reproduction infringes Crown Copyright and may lead to prosecution or civil proceedings. (100019180), (2013)

PLANNING

Hampshire County Council

PROJECT
**Merton Junior & Infant School
1 FE Extension**

SCALE
1:100@A1
@A3

DATE
23/07/13

DRAWN
GN

CHKD.

HCC Property Services,
Three Minsters House,
76 High Street, Winchester SO23 8UL.
tel: (01962) 847801

PROPERTY SERVICES

SHEET CONTENTS
**Infant School
Proposed Elevations**

DRAWING No. **P09156 - 310**

REVISION
P1