

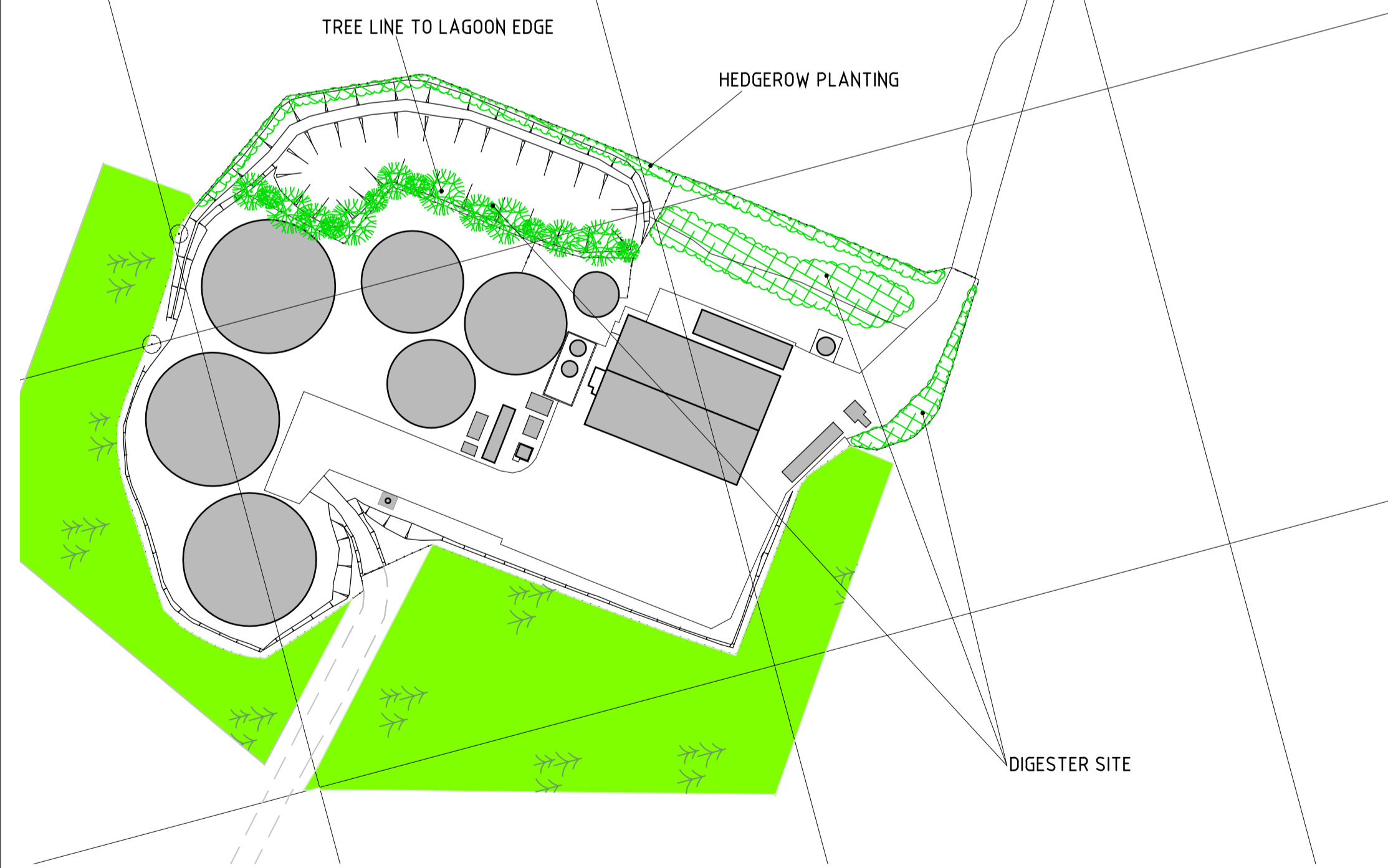
NOTES:

DIMENSIONS TO BE CHECKED ON SITE BEFORE COMMENCING WORK. ANY DISCREPANCIES SHALL BE REPORTED TO CURTIS LEEVES TECHNICAL LTD. IMMEDIATELY.

DO NOT SCALE FROM THESE DRAWINGS EXCEPT FOR PLANNING PURPOSES. USE FIGURED DIMENSIONS ONLY.

WHERE APPLICABLE THIS DRAWING IS TO BE READ IN CONJUNCTION WITH OTHER CONSULTANTS' DRAWINGS.

THIS DRAWING IS THE COPYRIGHT OF CURTIS LEEVES TECHNICAL LTD. AND MAY NOT BE COPIED, ALTERED OR REPRODUCED IN ANY WAY, OR PASSED TO A THIRD PARTY, WITHOUT WRITTEN AUTHORITY.



**PLANTING SCHEME DETAILS**

**PLANTING SEASON**

All planting is to be carried out in the 2015/2016 winter season.

**SULLENGER'S COPSE**

Objective: To enhance Sullenger's Copse through the addition of a new area of native woodland planting, and to increase the woodland's capacity for sustainable management in relation to the AD facility.

Ground Preparation: No ground preparation will be necessary.

Tree Stock: 60-80cm transplants, 1 year (maple, hazel, hawthorn), 2 year others.

**Species Choice and Numbers:**

Tilia cordata (Lime)	330
Fagus sylvatica (Beech)	330
Acer campestre (F. Maple)	220
Corylus avellana (Hazel)	110
Crataegus mono (Hawthorn)	55
Viburnum lantana (Wayfarer)	55

Planting Matrix: 3m spacing, planted in an irregular pattern to achieve at least 1000 trees/ha evenly spread across areas.

Planting Technique: "Notch planting".

Protection and Support: 1.2m standard "Tubex" tree shelters, 1.2m tree stake, 32x32, for lime, beech and maple. 0.6m shelter & stake for others.

**HEDGEROW PLANTING (NW BOUNDARY OF DIGESTER SITE)**

Objective: Screening to the west of the site.

Ground Preparation: Strim grass along proposed area for planting. Apply herbicide along proposed hedge-line 2 weeks prior to planting.

Plant Stock: Hedge plants, 60-80cm, 1 year, bare root.

**Species Choice and Numbers:**

Crataegus mono (Hawthorn)	400
Corylus avellana (Hazel)	125
Prunus spinosa (Blackthorn)	150
Acer campestre (F. Maple)	150

Planting Matrix: 5 hedging plants/m, staggered matrix.

Planting Technique: "Notch planting".

Protection and Support: Hedging plants 0.6m spiral guard with bamboo cane.

**DIGESTER SITE (NW OF RECEPTION, SITE ENTRANCE, WESTERN CORNER, LAGOON EDGE)**

Objective: Screening of digester site.

Ground Preparation: Will need to be carried out for the new planting of the north west and north east periphery of the site. The soil will be partially sub-soil from the excavations that have taken place on site. It is therefore recommended that the soil in the area of the tree roots is mixed with organic matter or compost to ameliorate the sub-soil, thus improving the rooting environment for the planting.

Tree Stock: Standards, 8-10cm girth, 2.5m-3.0m in height. Transplants 90-120cm, 2 year.

**Species Choice and Numbers:**

Tilia cordata (Lime)	24
Acer campestre (Field Maple)	18
Fagus sylvatica (Beech)	18
Crataegus mono (Hawthorn)	4
Alnus glutinosa (Alder)	90 (Tree line to lagoon edge)

Planting Matrix: Planted at 4m spacing, using random pattern to replicate natural woodland growth. Tree line to lagoon edge at 0.9m centres.

Planting Technique:

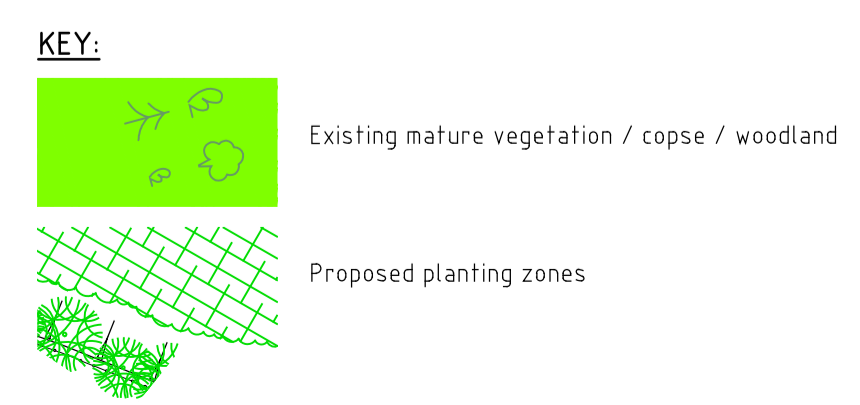
Standards; Tree planting shall take place during the winter months, when using bare root stock.

- Each tree has to be planted in an individual "pit". The addition of rooting compost shall be applied thus encouraging strong and vigorous root development.
- The installation of 1.2m "Netlon" tree guard will deter basal mechanical and mammalian damage.
- The installation of an appropriate tree stake will help ensure strong establishment.
- A layer of well rotted wood mulch can be spread over the surface of each tree pit, in order to retain the soil moisture content and to add valuable nutrients to the rooting environment.
- Formative pruning should take place in order to remove any crown defects. This should be carried out in accordance with industry best practice. Reference can be made to BS3998:2010 Tree Works Recommendations.

Transplants; Tree planting shall take place during the winter months.

- The "notch planting" technique will be employed.
- 0.6m spiral guard with bamboo cane support.
- Ensure plant is firmed in and stable.

**Proposed Planting Scheme**  
Scale 1:1000



P1	Issued for Planning	08-01-16
rev	description	date
status	Planning	



**CURTIS LEEVES TECHNICAL LTD**  
Unit 2A Sindles Farm, Aldsworth  
Emsworth PO10 8QS  
01243 378070  
mail@citechnical.co.uk

client		
Tamar Energy Ltd		
project		
Farleigh AD Plant Manor Farm Farleigh Wallop		
title		
Proposed Planting Scheme		
date	drawn by	scale
Jan 2016	GC	1:1000 @ A1
drawing number	revision	
1518 / P103	P1	