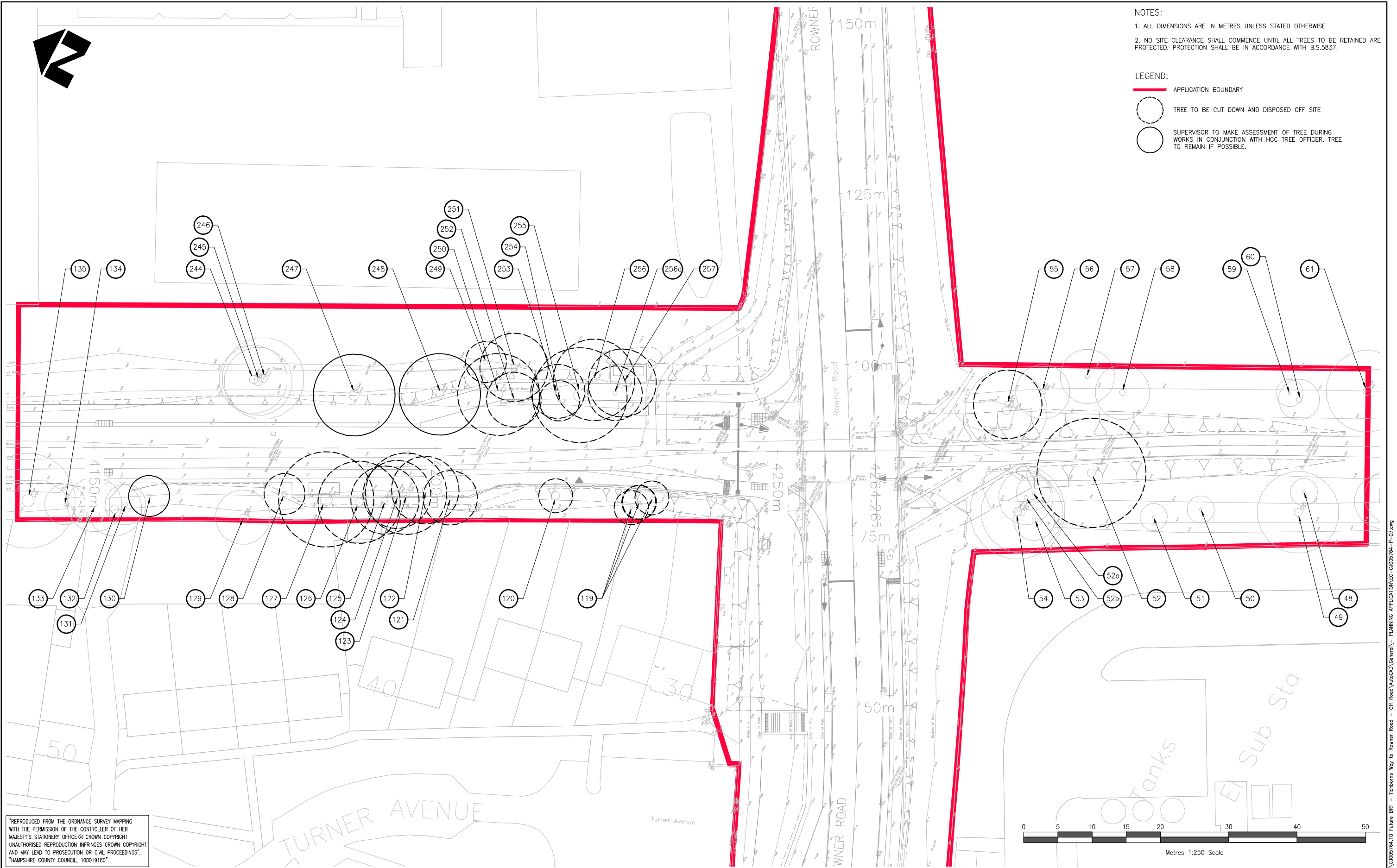




- NOTES:
1. ALL DIMENSIONS ARE IN METRES UNLESS STATED OTHERWISE
 2. NO SITE CLEARANCE SHALL COMMENCE UNTIL ALL TREES TO BE RETAINED ARE PROTECTED. PROTECTION SHALL BE IN ACCORDANCE WITH B.S.5837.

- LEGEND:
- APPLICATION BOUNDARY
 - TREE TO BE CUT DOWN AND DISPOSED OFF SITE
 - SUPERVISOR TO MAKE ASSESSMENT OF TREE DURING WORKS IN CONJUNCTION WITH HCC TREE OFFICER. TREE TO REMAIN IF POSSIBLE.



"REPRODUCED FROM THE ORDNANCE SURVEY MAPPING WITH THE PERMISSION OF THE CONTROLLER OF HER MAJESTY'S STATIONERY OFFICE © CROWN COPYRIGHT UNAUTHORISED REPRODUCTION INFRINGES CROWN COPYRIGHT AND MAY LEAD TO PROSECUTION OR CIVIL PROCEEDINGS". "HAMPSHIRE COUNTY COUNCIL, 100019180".

REV.	AMENDMENT	DATE	DRAWN	CHKD	APPD

CLIENT	CONSULTANT
	STUART JARVIS BSc DipTP FCIHT MRITP: DIRECTOR OF ECONOMY, TRANSPORT & ENVIRONMENT

DRAWN	DPS	SCHEME	ROWNER ROAD, GOSPORT JUNCTION WITH ECLIPSE BUSWAY AND BRIDGE REMOVAL	DRAWING TITLE	TREES TO BE REMOVED/RETAINED
CAD	DPS	CHECKED	AT AT	JOB No. C/J005764.10	HCC Caplist 04.Jul.2013 at 10:17am
APPROVED	MC MC	SCALE	1:250	DATE	Jun. 13
				SHEET No.	1 OF 1
				DRG No.	EC/CJ005764/P/07

0	5	10	15	20	30	40	50
Metres 1:250 Scale							

hcc.dwg: K:\Eng\Roads\Schemes\CJ005764.10 Future BR1 - Titchborne Way to Rowner Road - 01f Road\AutoCAD\General - PLANNING APPLICATION EC - C/J005764-P-07.dwg