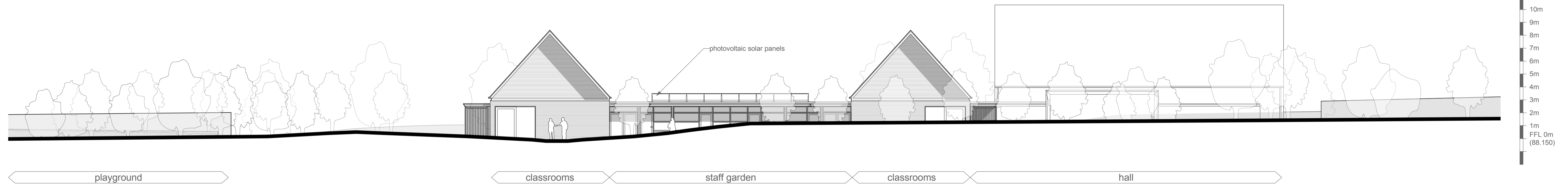
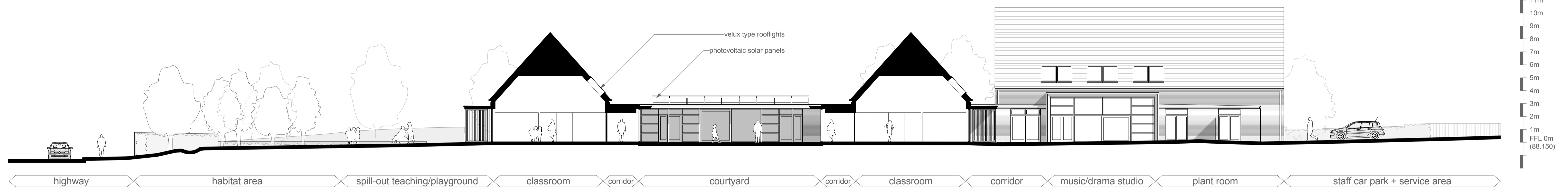


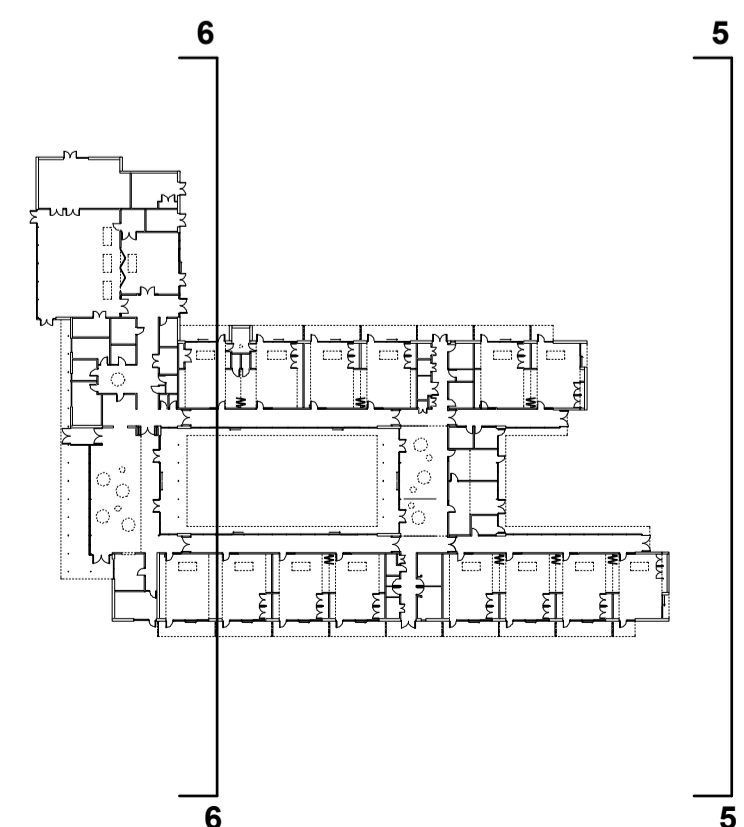
Sectional Elevation 5






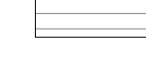

Sectional Elevation 6



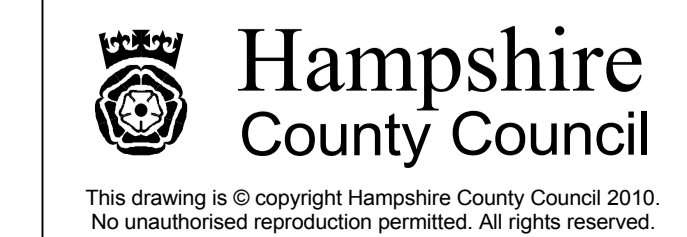
Key Plan



Materials Key

-  Buff brickwork to walls and hall gables
-  Timber cladding to classroom gables and studio walls
-  PPC aluminium / composite windows
-  Slate roofing (blue / grey) at 48° pitch
-  Hardwood timber screens under classroom canopies

Revision A - Roofs, massing, solar panels and fenestration updated. - 14/05/2010



PROJECT
East Anton Primary School

1:150 @ A1 February 2010

SHEET CONTENTS
Sectional Elevations 5 - 6

P7476 A 43 REV. **A**

Planning Issue