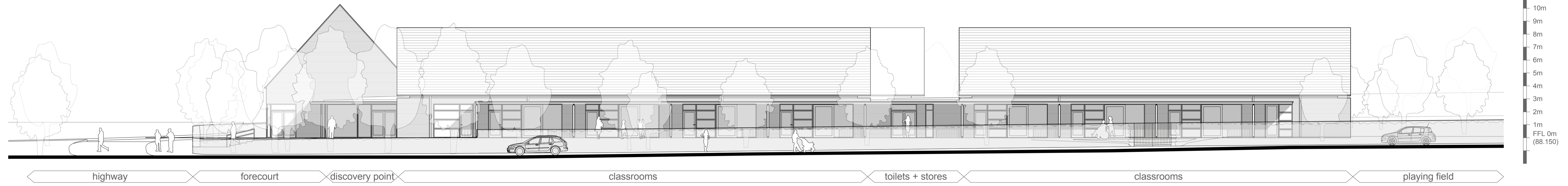
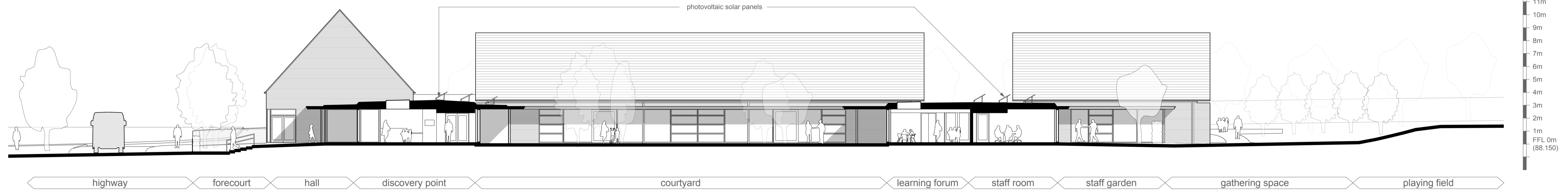


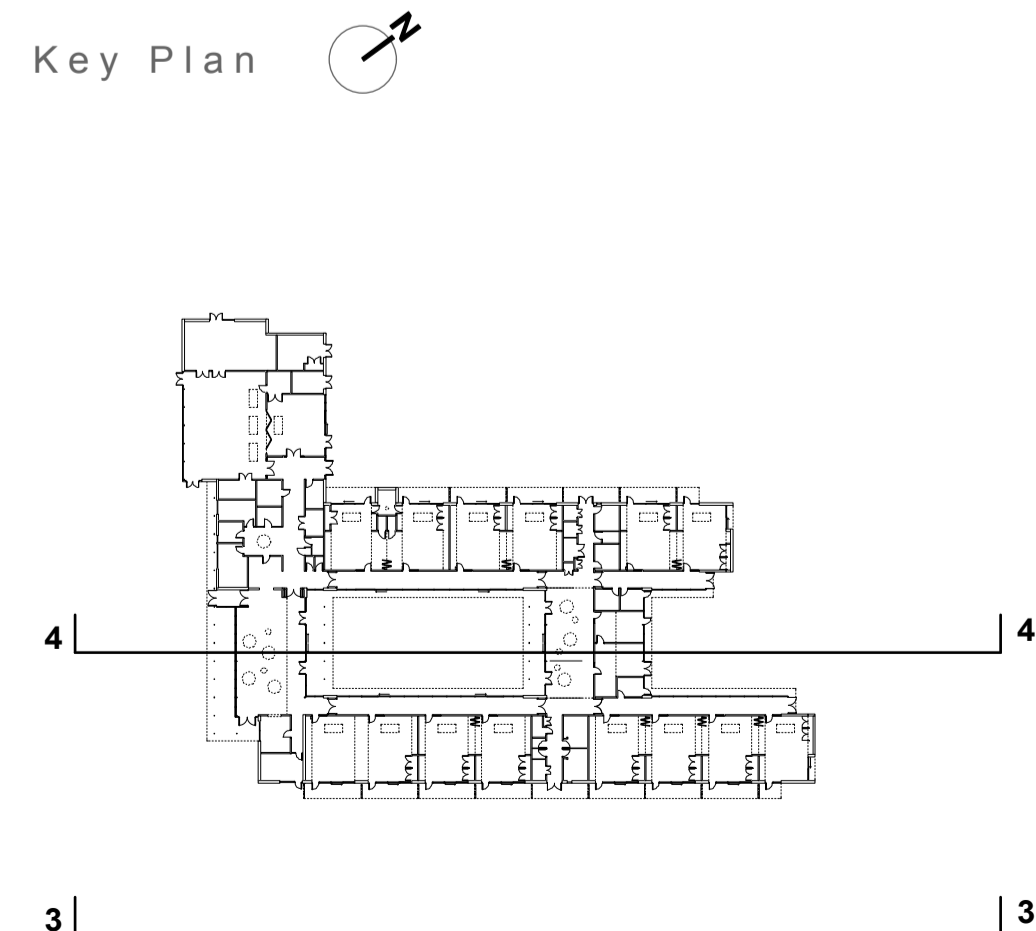
Sectional Elevation 3



Sectional Elevation 4



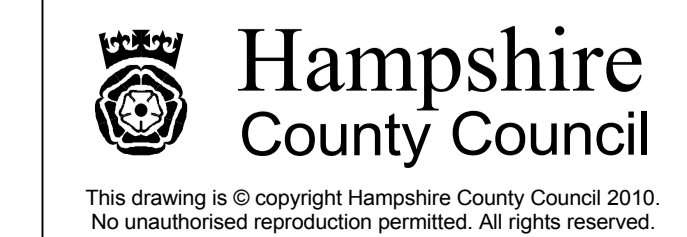
Key Plan



Materials Key

	Buff brickwork to walls and hall gables
	Timber cladding to classroom gables and studio walls
	PPC aluminium / composite windows
	Slate roofing (blue / grey) at 48° pitch
	Hardwood timber screens under classroom canopies

Revision A - Roofs, massing, solar panels and fenestration updated. - 14/05/2010



PROJECT East Anton Primary School	SHEET CONTENTS Sectional Elevations 3 - 4
1:150 @ A1	February 2010
P7476 A 42 REV. A	

Planning Issue