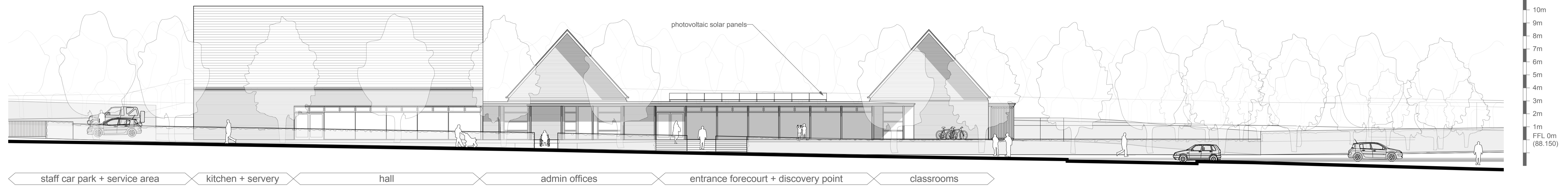
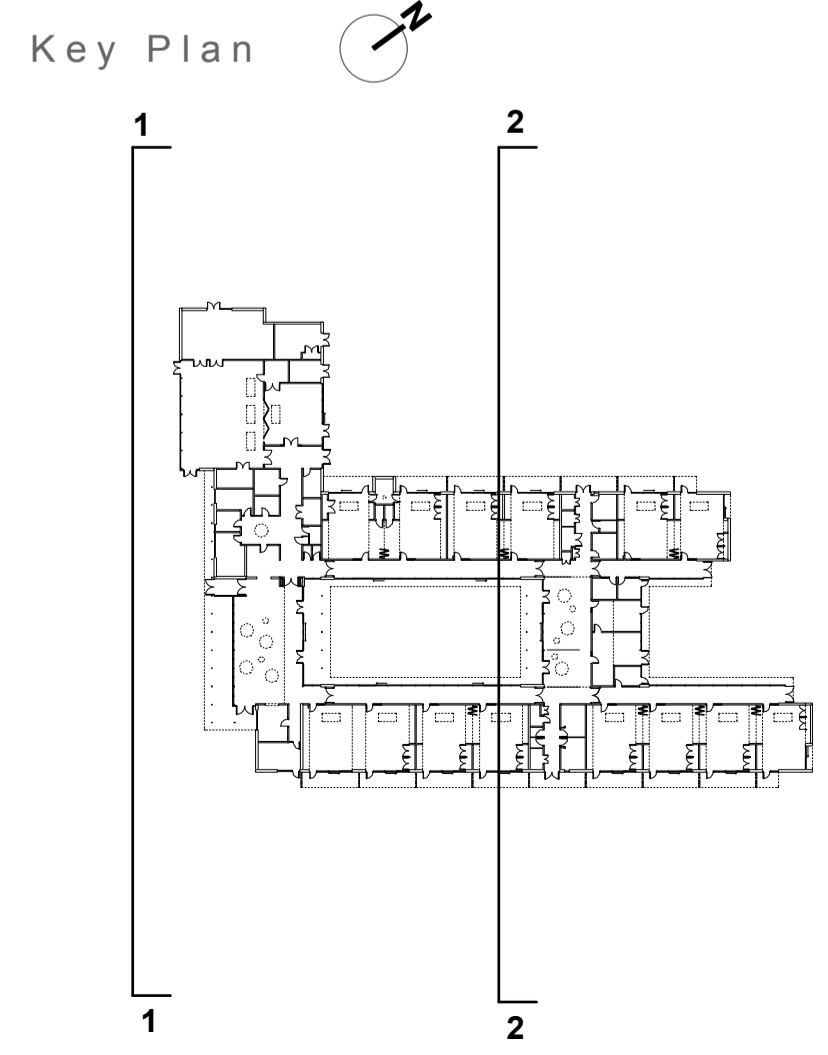
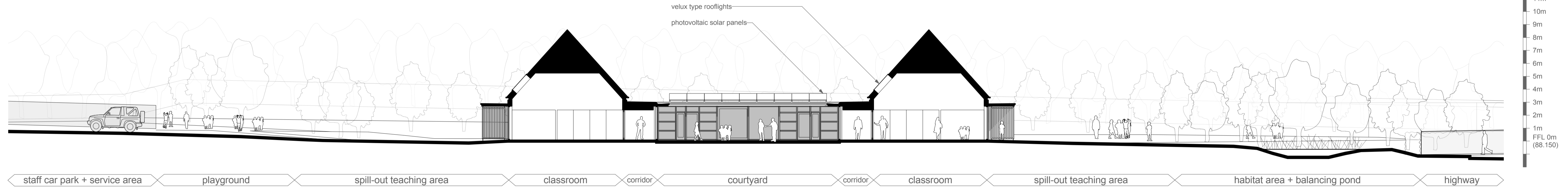


Sectional Elevation 1



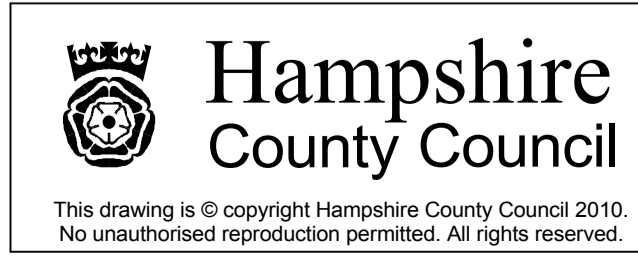
Sectional Elevation 2



Materials Key

	Buff brickwork to walls and hall gables
	Timber cladding to classroom gables and studio walls
	PPC aluminium / composite windows
	Slate roofing (blue / grey) at 48° pitch
	Hardwood timber screens under classroom canopies

Revision A - Roofs, massing, solar panels and fenestration updated. - 14/05/2010



PROJECT
East Anton Primary School

1:150 @ A1 February 2010

Planning Issue

SHEET CONTENTS
Sectional Elevations 1 - 2

P7476 A 41 REV. **A**