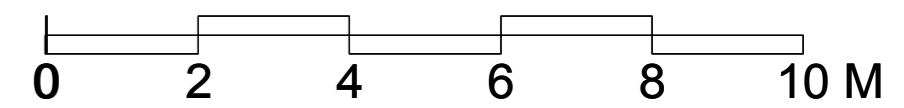
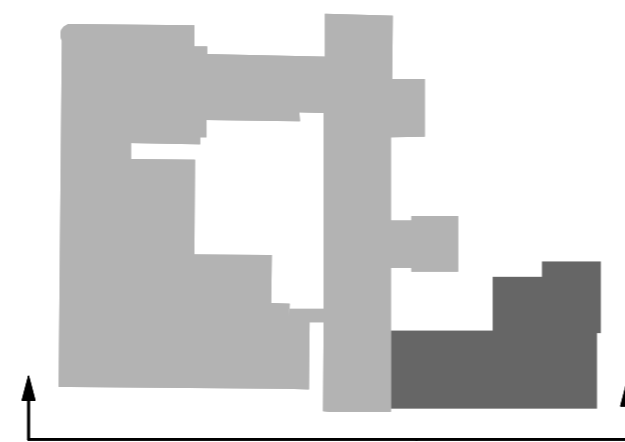




- KEY**
- A Brickwork to Match Existing
  - B Tiles to Match Existing
  - C Aluminium Windows/Doors - Powder Coated White
  - D Coloured Opaque Glazed Panel
  - E Aluminium Fascia - Powder Coated White
  - F Obscured Glazing
  - G Metal Railings - Powder Coated White



## Planning Application

**Notes**

- This drawing is © copyright Hampshire County Council 2012. No unauthorised reproduction of any kind is permitted.
- No Dimensions to be scaled from this drawing
- This map is reproduced from Ordnance Survey material with the permission of Ordnance Survey on behalf of the controller of Her Majesty's Stationery Office © Crown copyright. Unauthorised reproduction infringes Crown Copyright and may lead to prosecution or civil proceedings. (100019180), (2012)

rev	description	date	by
A	EXTERNAL PATHS AND STEPS ALTERED	30/11/12	SM

		HCC Property Services, Three Minsters House, 76 High Street, Winchester SO23 8UL. tel: (01962) 847801			
<b>PROJECT</b> Westholme Nursing Home Winchester Nursing Care Extension			<b>SHEET CONTENTS</b> Proposed Southwest Elevation		
<b>SCALE</b> 1:100 @A1 1:200 @A3	<b>DATE</b> 09/11/12	<b>DRAWN</b> SM	<b>CHKD.</b> RB	<b>DRAWING No.</b> <b>P9666_P_116</b>	<b>REVISION</b> <b>A</b>
<b>FILE REF.</b> P9666				<b>REVISION</b> A	