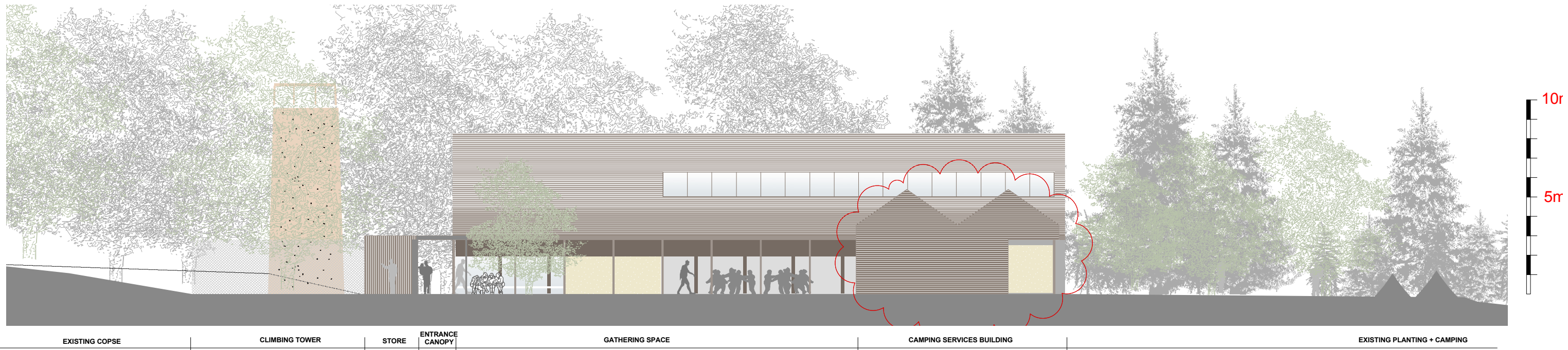


SOUTH EAST ELEVATION C-C



SOUTH WEST ELEVATION D-D

PLANNING



Property, Business and Regulatory Services,
Three Minsters House,
76 High Street, Winchester SO23 8UL.
tel: (01962) 847801

MATERIALS



Notes
1 This drawing is © copyright Hampshire County Council 2009. No unauthorised reproduction of any kind is permitted.
2 No Dimensions to be scaled from this drawing
3 This map is reproduced from Ordnance Survey material with the permission of Ordnance Survey on behalf of the controller of Her Majesty's Stationary Office © Crown copyright. Unauthorised reproduction infringes Crown Copyright and may lead to prosecution or civil proceedings. (100019186), (2009)

rev	description	date	by
-	PLANNING ISSUE	Feb 10	RH
A	PLANNING ISSUE - Revisions as clouded	Mar 10	RH

PROJECT			SHEET CONTENTS	
RUNWAYS END YOUTH ACTIVITY CENTRE ALDERSHOT			Proposed Multi-Use Hall Elevations C and D	
SCALE 1:100 @ A1 1:200 @ A3	DATE Jan 10	DRAWN. arcsbk	DRAWING No. P6218 - P 023	REVISION A
FILE REF.			P6724-P706 Proposed Site Plan	