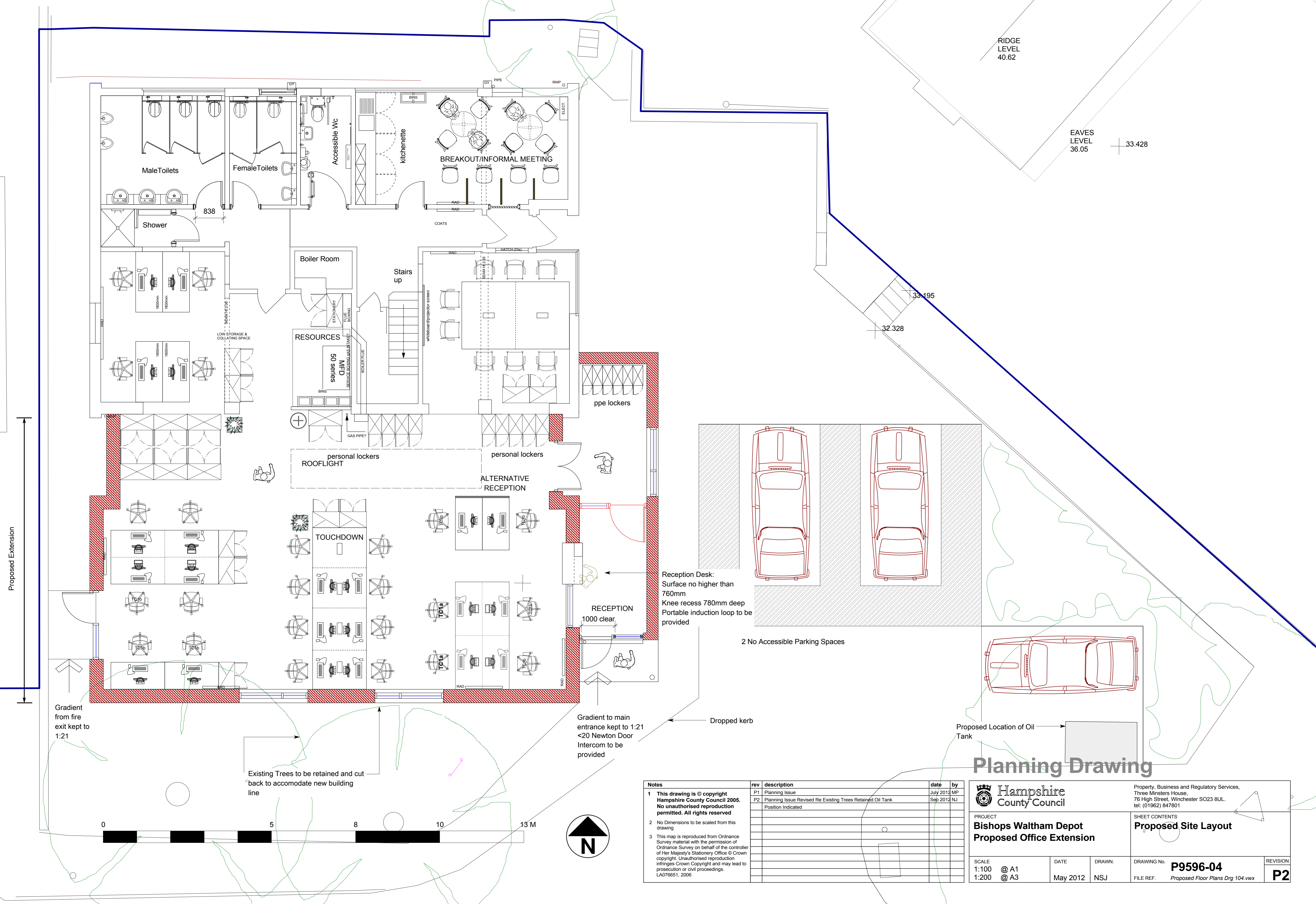


RIDGE LEVEL
40.62

EAVES LEVEL
36.05

33.195

32.328



Notes	rev	description	date	by
1 This drawing is © copyright Hampshire County Council 2005. No unauthorised reproduction permitted. All rights reserved	P1	Planning Issue	July 2012	MP
	P2	Planning Issue Revised Re Existing Trees Retained Oil Tank	Sep 2012	NJ
2 No Dimensions to be scaled from this drawing				
3 This map is reproduced from Ordnance Survey material with the permission of Ordnance Survey on behalf of the controller of Her Majesty's Stationery Office © Crown copyright. Unauthorised reproduction infringes Crown Copyright and may lead to prosecution or civil proceedings. LA076651, 2006				

Planning Drawing

		Property, Business and Regulatory Services, Three Minsters House, 76 High Street, Winchester SO23 8UL. tel: (01962) 847801	
PROJECT Bishops Waltham Depot Proposed Office Extension		SHEET CONTENTS Proposed Site Layout	
SCALE	DATE	DRAWN.	DRAWING No.
1:100 @ A1	May 2012	NSJ	P9596-04
1:200 @ A3			FILE REF. <i>Proposed Floor Plans Drg 104.vwx</i>
			REVISION
			P2