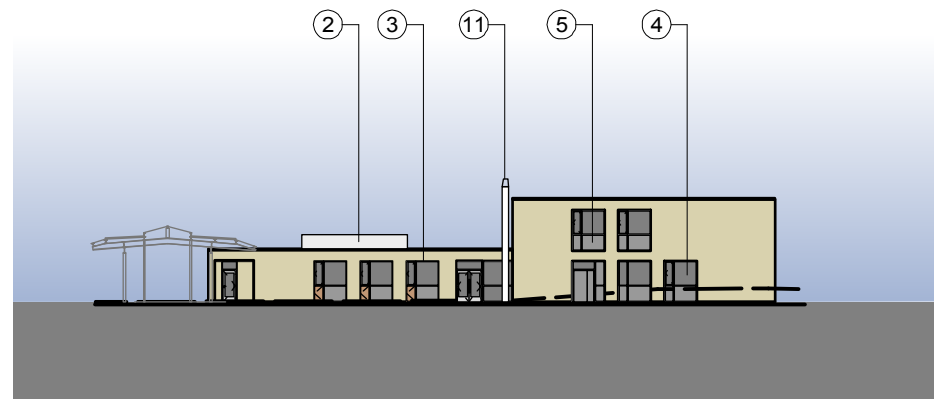
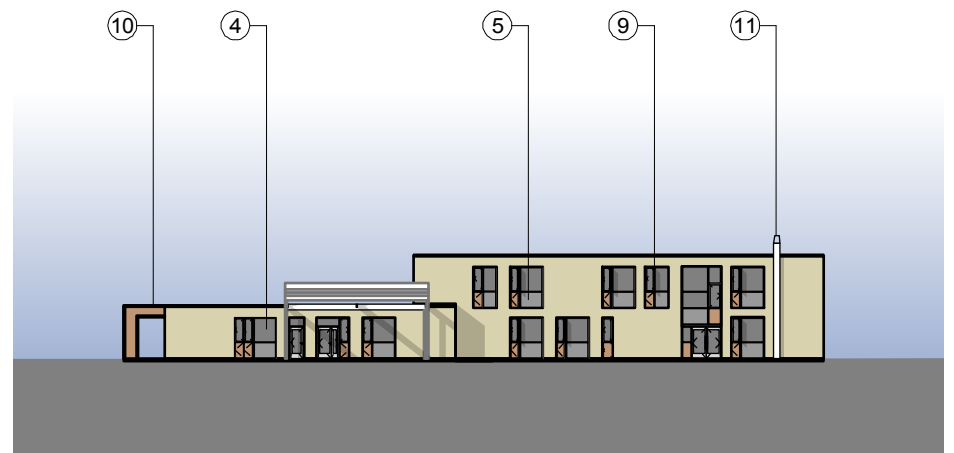


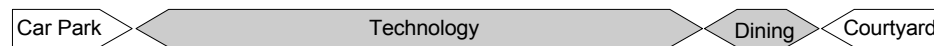
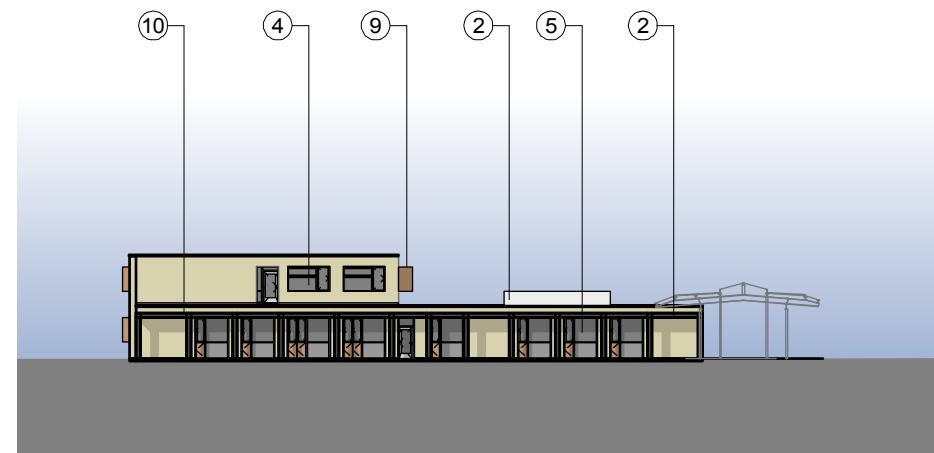
Section/Elevation FF - West Elevation



Section/Elevation GG - North Elevation



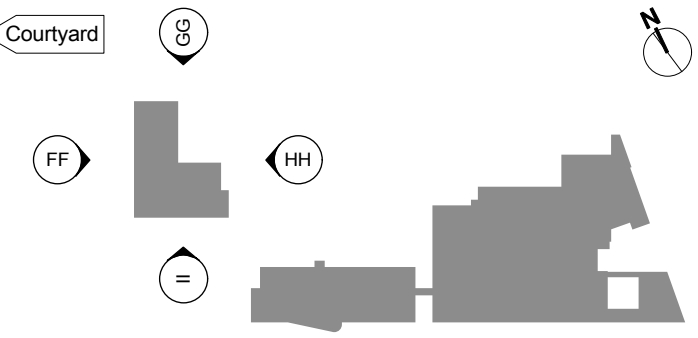
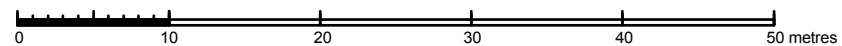
Section/Elevation HH - East Elevation



Section/Elevation II - South Elevation

### KEY

- Brick
- Wood
- ① Existing Elevation
- ② Power Coated Steel
- ③ Powder Coated Aluminum Frames
- ④ Glazing
- ⑤ Spandel Panel
- ⑥ Glazed Stair Core
- ⑦ Ventilation Shaft Terminous
- ⑧ Year 7 'Purposeful' Terrace
- ⑨ Brise Soleil
- ⑩ Canopy
- ⑪ External Flue



DRAWING KEY

# PLANNING



HCC Property Services,  
Three Minsters House,  
76 High Street, Winchester SO23 8UL.  
tel: (01962) 847801

Notes	
1 This drawing is © copyright Hampshire County Council 2009. No unauthorised reproduction permitted. All rights reserved.	3 This map is reproduced from Ordnance Survey material with the permission of Ordnance Survey on behalf of the controller of Her Majesty's Stationery Office © Crown Copyright. Unauthorised reproduction infringes Crown Copyright and may lead to prosecution or civil proceedings. (100019180), (2009)
2 No dimensions are to be scaled from this drawing	

rev	description	date	by
P1	ISSUED FOR PLANNING	FEB 12	

PROJECT				SHEET CONTENTS	
<b>Park Community School Middle Park Way Havant</b>				<b>Proposed North, South, East and West Elevations of 'Scola' Science and Technology Block</b>	
SCALE 1:250 @ A1 1:500 @ A3	DATE Dec 2011	DRAWN. ARCTRU	CHKD. ---	DRAWING No. <b>P9000-307</b>	REVISION <b>P1</b>
				FILE REF. CAD2/CS/PQRS/Park/P9000 Masterplan/300	

