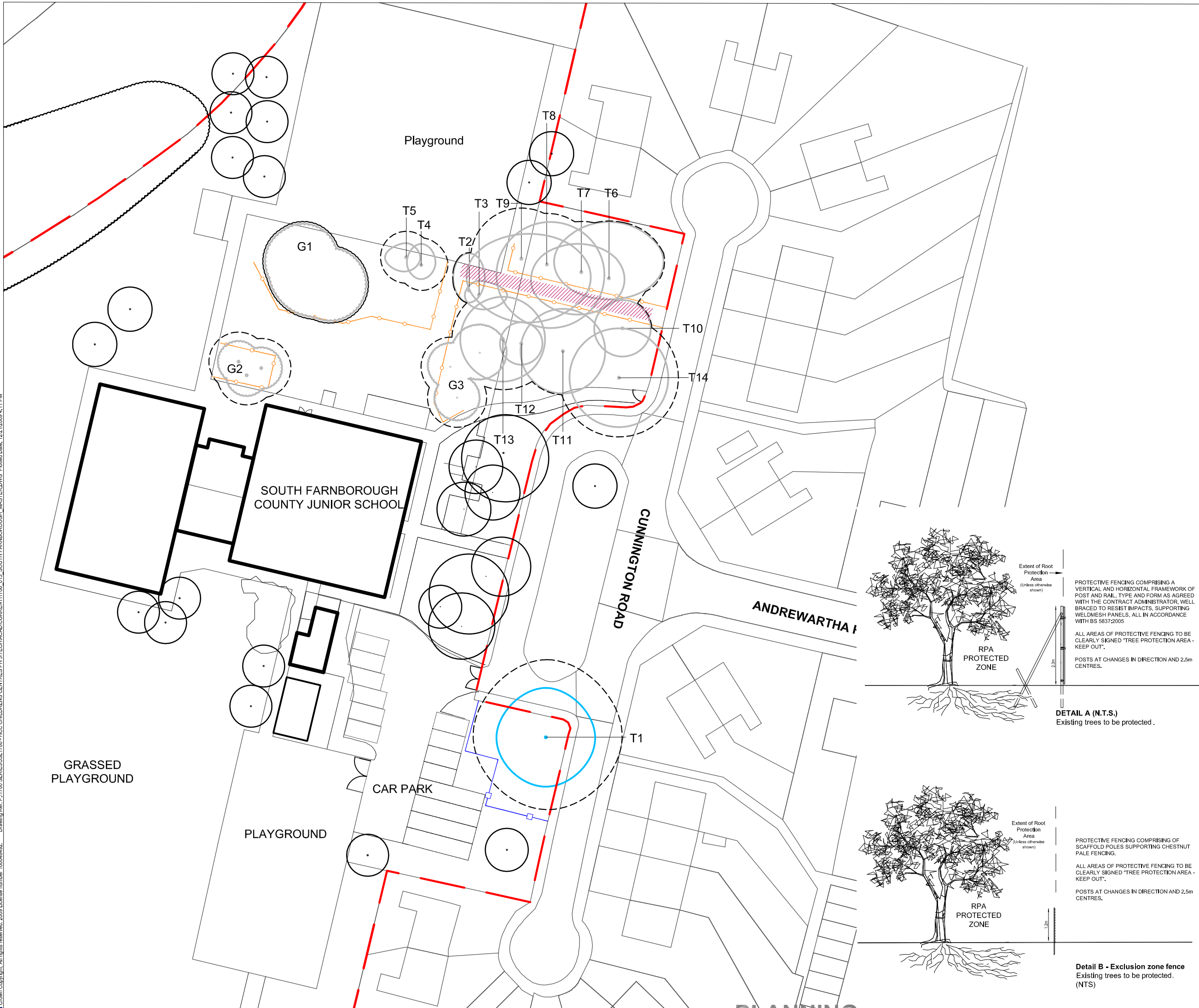


Drawing Ref: P11700 SERIES/SL1706 - HCC CHILDRENS CENTRES PH.3/TECHCAD/CURRENT/1706_013 SOUTH FARNBOROUGH MASTER/DWG Plotted Date: 12/21/2009 4:11 PM
 Crown Copyright. All rights reserved. 2009 License number: 100048492.



Key

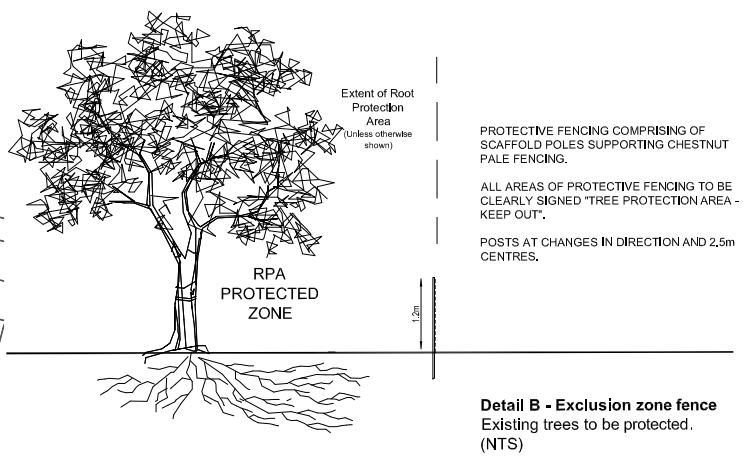
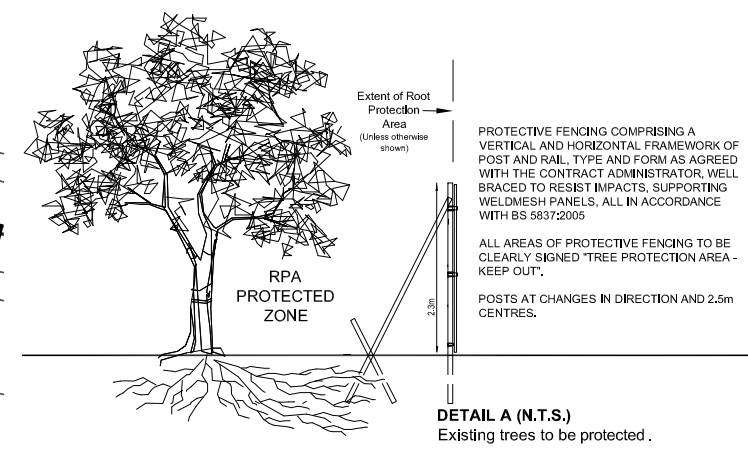
- Site boundary.
- Tree with numbered reference. Canopy spread and BS5837:2005 Colour Category as shown below.
- Vegetation group with numbered reference. Canopy spread and BS5837:2005 Category.
- Hedge with numbered reference. Width and BS5837:2005 Category.

BS 5837:2005 Tree Quality Categories - Table 1

- Category A - High quality
- Category B - Moderate quality
- Category C - Low quality

- Tree outside of survey area, shown for context only.
- Root Protection Area (RPA)
- Temporary protective fencing in accordance with Fig2 - BS 5837:2005. See inset detail.
- Temporary protective exclusion fencing. 1.2m high, scaffold poles and chestnut pale fencing. Refer to inset detail B.
- Above ground construction requirements. Refer to note for "no-dig" design principles.

- ### NOTES:
- Refer to RPS Tree Survey Report & Schedule for further details.
 - Survey based on a visual inspection from the ground and is not intended as a full arboricultural inspection.
 - Plan produced in accordance with recommendations set out in BS 5837:2005 - 'Trees in Relation to Construction'.
 - Due to the legal protection afforded to breeding birds vegetation removal should not take place during the bird nesting period; generally, although not restricted to, March - August inclusive.
 - Survey based upon location plan produced by HCC in 2009.



A	21.12.09	Revised Building Layout	DR	NJ
Rev:	Date:	Amendment:	Name:	Checked:

Drawing Based Upon: P 8424 - 100
 Status: **For Planning**
 Notes: Contractors are not to scale from this drawing. All dimensions to be checked on site and any discrepancies, ambiguities and/or omissions between this drawing and information given elsewhere must be reported to this office. If in doubt, ask.

Lakesbury House Hittingbury Road Chandlers Ford Hampshire SO53 5SS
 T 023 80810440 F 023 80810449 E rpsso@rpsgroup.com W www.rpsgroup.com

Client: Hampshire County Council
Project: Childrens Centres Phase 3
 South Farnborough Junior School
Title: Amenity Survey
 and Tree Protection Plan
 Date: 09/09 Scale: 1: 500 Paper Size: A3
 Drawn: DR Checked: NJ Job Ref: JSL 1706

Drawing Number: 013 **Rev:** A
www.rpsgroup.com