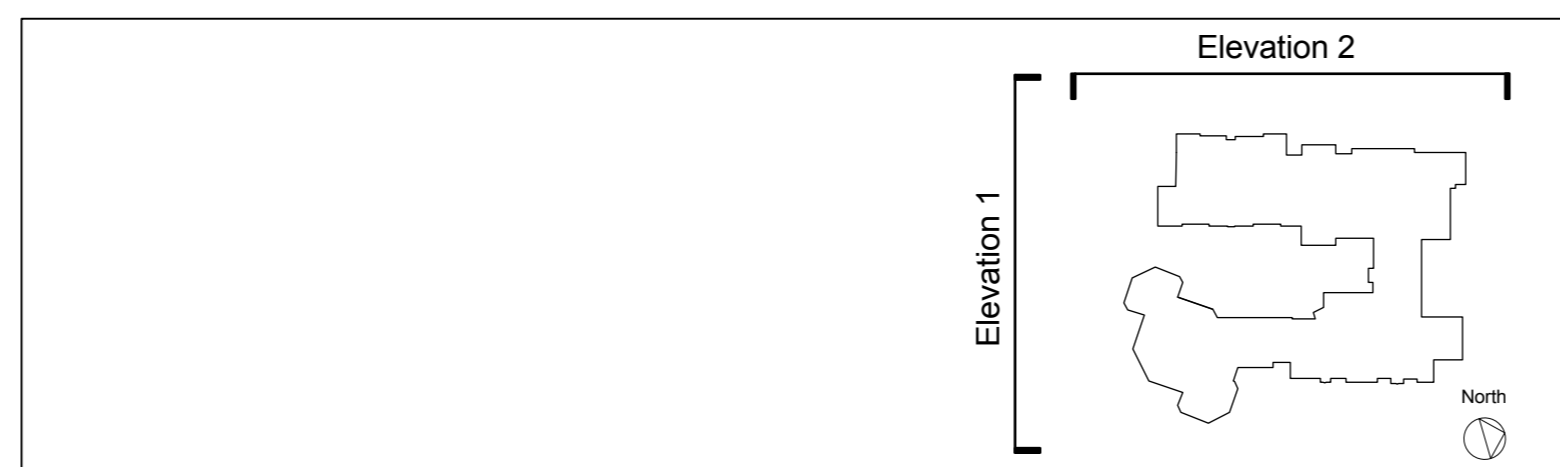


Elevation 1 - Existing condition



Elevation 2 - Existing condition

## Planning Issue



**Notes**

- 1 This drawing is © copyright Hampshire County Council 2012. No unauthorised reproduction of any kind is permitted.
- 2 No Dimensions to be scaled from this drawing
- 3 This map is reproduced from Ordnance Survey material with the permission of Ordnance Survey on behalf of the controller of Her Majesty's Stationery Office © Crown copyright. Unauthorised reproduction infringes Crown Copyright and may lead to prosecution or civil proceedings. (100019180), (2012)

rev	description	date	by

		HCC Property Services, Three Minsters House, 76 High Street, Winchester SO23 8UL. tel: (01962) 847801			
<b>PROJECT</b> Hampshire County Council St Peters 1.5FE Primary School Expansion to 2FE Primary					
<b>SCALE</b> 1:100 @ A1 1:200 @ A3		<b>DATE</b> March 2013	<b>DRAWN</b> ARCNPA	<b>CHKD.</b>	<b>DRAWING No.</b> <b>P09763-A-300</b>
<b>SHEET CONTENTS</b> Existing Elevations				<b>REVISION</b>	
<b>FILE REF.</b>					