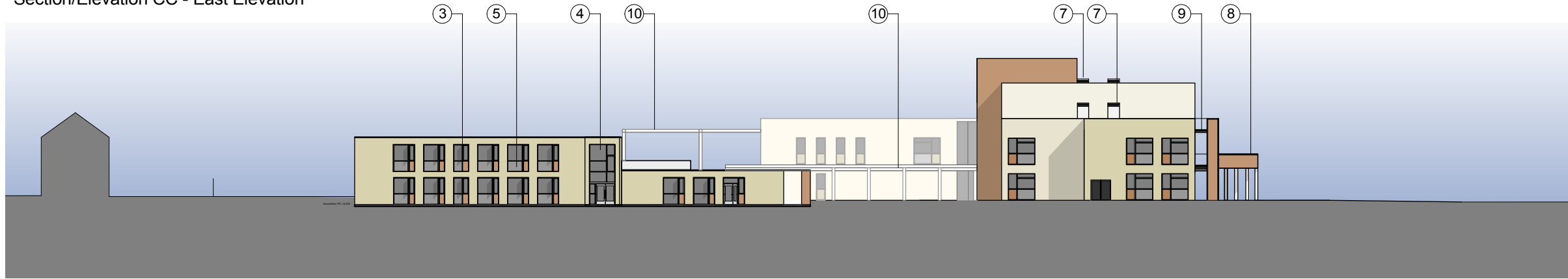


Section/Elevation CC - East Elevation



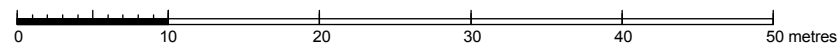
Section/Elevation DD - West Elevation



Section/Elevation EE - West Elevation, Including Dining

KEY

- Brick
- Wood
- ① Existing Elevation
- ② Power Coated Steel
- ③ Powder Coated Aluminum Frames
- ④ Glazing
- ⑤ Spandel Panel
- ⑥ Glazed Stair Core
- ⑦ Ventilation Shaft Terminous
- ⑧ Year 7 'Purposeful' Terrace
- ⑨ Brise Soleil
- ⑩ Canopy



HCC Property Services,
Three Minsters House,
76 High Street, Winchester SO23 8UL.
tel: (01962) 847801

| Notes | |
|---|---|
| 1 This drawing is © copyright Hampshire County Council 2009. No unauthorised reproduction permitted. All rights reserved. | 3 This map is reproduced from Ordnance Survey material with the permission of Ordnance Survey on behalf of the controller of Her Majesty's Stationery Office © Crown Copyright. Unauthorised reproduction infringes Crown Copyright and may lead to prosecution or civil proceedings. (100019180), (2009) |
| 2 No dimensions are to be scaled from this drawing | |

| rev | description | date | by |
|-----|---------------------|--------|----|
| P1 | ISSUED FOR PLANNING | FEB 12 | |

| | | | |
|--|------------------|------------------|--------------|
| PROJECT Park Community School Middle Park Way Havant | | | |
| SCALE 1:250 @ A1 1:500 @ A3 | DATE Dec 2011 | DRAWN. ARCTRU | CHKD. --- |

| | | |
|--|-----------------------|--|
| SHEET CONTENTS Proposed East and West Elevations and Section through glazed link | | |
| DRAWING No. P9000-306 | REVISION P1 | |
| FILE REF. CAD2/CS/PQRS/Park/P9000 Masterplan/300 | | |