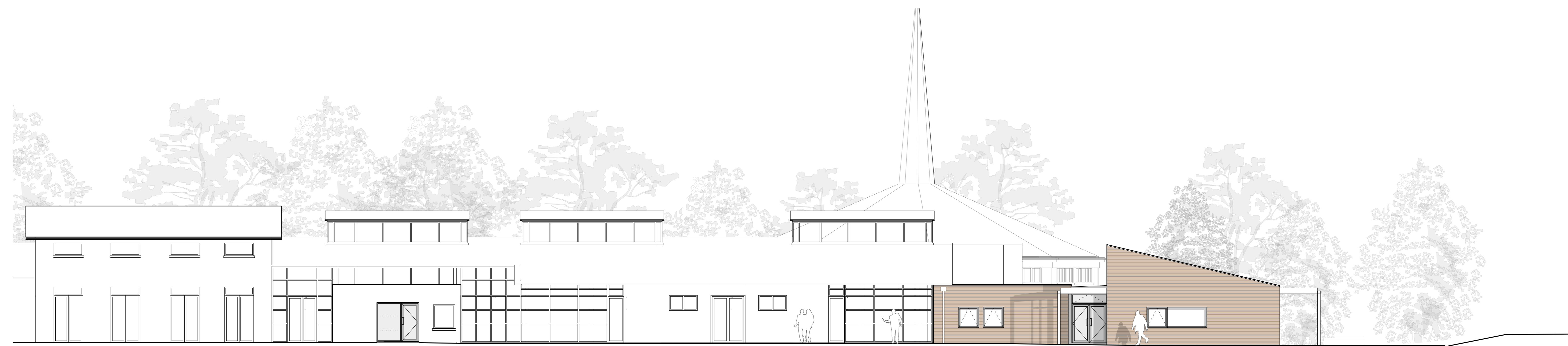




Elevation 1 - Proposed

new classrooms

st. stephens church



Elevation 2 - Proposed

group room and circulation

new classrooms

canopy

Materials Key

- Facing Brick
- PPC aluminum fenestration

Elevations scale 0 5 M

Key Plan

Elevation 1

Elevation 2

North

Notes

- This drawing is © copyright Hampshire County Council 2012. No unauthorised reproduction of any kind is permitted.
- No Dimensions to be scaled from this drawing
- This map is reproduced from Ordnance Survey material with the permission of Ordnance Survey on behalf of the controller of Her Majesty's Stationery Office © Crown copyright. Unauthorised reproduction infringes Crown Copyright and may lead to prosecution or civil proceedings. (100019180), (2012)

rev	description	date	by

Hampshire County Council

HCC Property Services,
Three Minsters House,
76 High Street, Winchester SO23 8UL.
tel: (01962) 847801

PROJECT
Hampshire County Council
St Peters 1.5FE Primary School
Expansion to 2FE Primary

SHEET CONTENTS
Proposed Elevations
Sheet 1 of 2

SCALE	DATE	DRAWN	CHKD.	DRAWING No.	REVISION
1:100 @ A1 1:200 @ A3	Feb 2013	ARC	NPA	P09763-A-302	A

FILE REF. P09763 St Peters Planning Elevs.vwx

Planning Issue