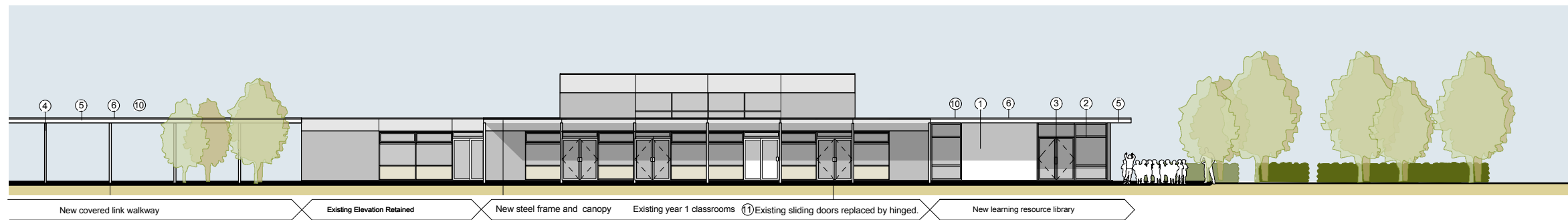
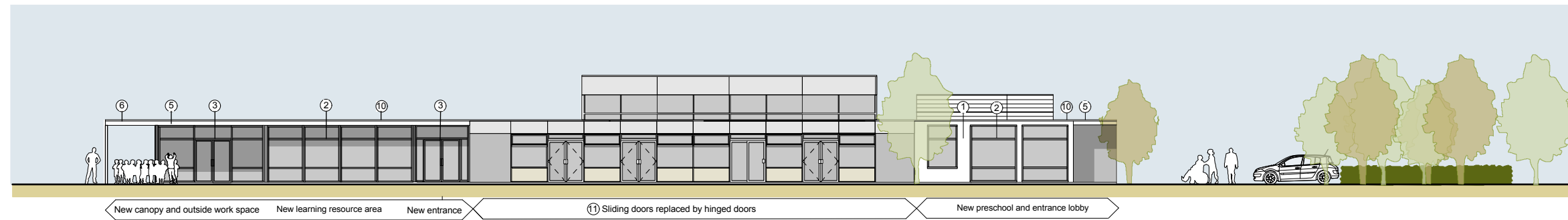


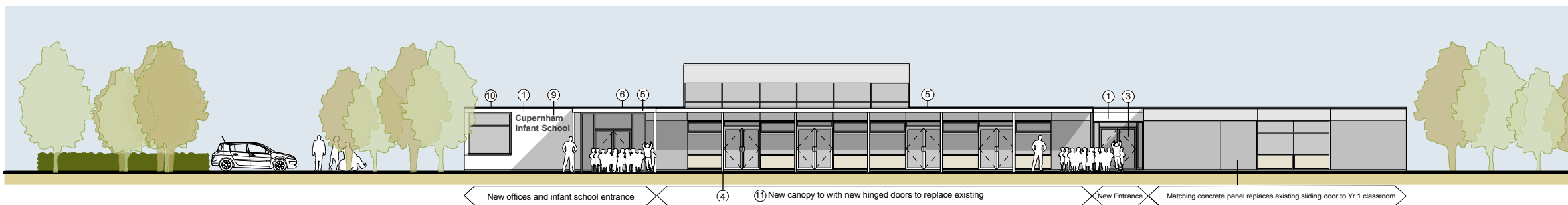
Infant School North Elevation



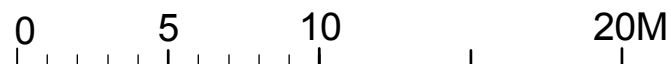
Infant School South Elevation



Infant School East Elevation



Infant School West Elevation



Planning Issue

Materials Key

- ① White painted render on insulated panel
- ② Powder coated blue/grey finish to RAL 7031 on metal windows
- ③ Powder coated blue/grey finish RAL 7031 on metal doors
- ④ White painted finish to steel posts
- ⑤ White finish to composite fascia panels
- ⑥ Mill finish aluminium roof trims
- ⑦ External grade vertical cedar boarding
- ⑧ External grade hardwood decking
- ⑨ Brushed stainless steel cut letters fixed to wall
- ⑩ Proprietary layered felt roof
- ⑪ Existing sliding doors replaced by hinged. Colour to match existing



Property, Business and Regulatory Services,
Three Minsters House,
76 High Street, Winchester SO23 8UL.
tel: (01962) 847801

Notes	
1 This drawing is © copyright Hampshire County Council 2008. No unauthorised reproduction permitted. All rights reserved.	3 This map is reproduced from Ordnance Survey material with the permission of Ordnance Survey on behalf of the controller of Her Majesty's Stationery Office © Crown Copyright. Unauthorised reproduction infringes Crown Copyright and may lead to prosecution or civil proceedings. LA076651, 2008
2 No dimensions are to be scaled from this drawing	

rev	description	date	by

PROJECT Cupernham Infant and Junior Schools Expansion to 3FE		SHEET CONTENTS Infant School Proposed Elevations	
SCALE 1:125 @ A1 1:250 @ A3	DATE 06.02.12	DRAWN. PT	DRAWING No. P9194-41
FILE REF. Cupernham Planning Elevations.vwx			REVISION .