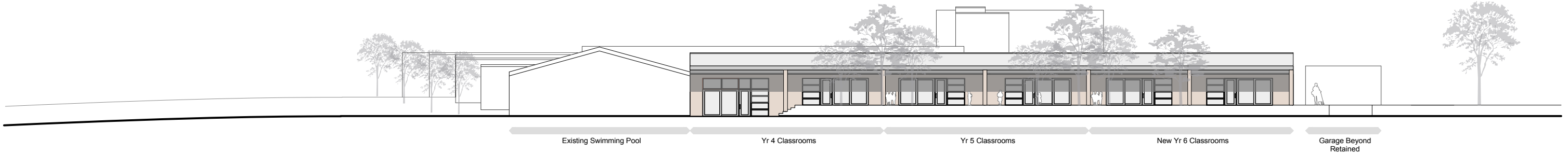
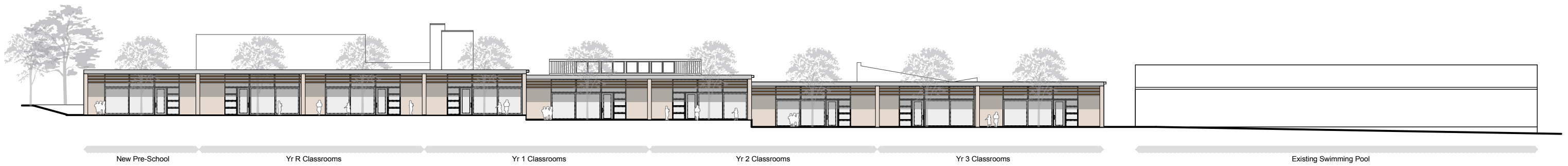


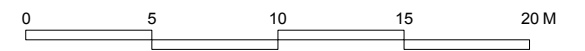
East Elevation



South Elevation



Materials Key	
Mono Pitched Roof	- Profiled aluminium sheet roof to match existing
Flat Roof	- 3 Layer Felt Roof
External Walls	- Buff coloured Brick/Render
Windows/Doors	- Double Glazed Units with Polyester Powder Coated Aluminium
Timber boarding	- Vertical Timber Boarding to high level on hall



PLANNING



**Hampshire
County Council**
Property, Business and Regulatory Services,
Three Minsters House,
76 High Street, Winchester SO23 8UL.
tel: (01962) 847801

Notes	
1 This drawing is © copyright Hampshire County Council 2009. No unauthorised reproduction permitted. All rights reserved.	3 This map is reproduced from Ordnance Survey material with the permission of Ordnance Survey on behalf of the controller of Her Majesty's Stationery Office © Crown Copyright. Unauthorised reproduction infringes Crown Copyright and may lead to prosecution or civil proceedings. LA076651, 2009
2 No dimensions are to be scaled from this drawing	

rev	description	date	by
-	PLANNING ISSUE	12.02.10	TB
A	External Wall Materials Clarified	14.05.10	LT

PROJECT		SHEET CONTENTS	
Barncroft Junior School Alteration & Extension To A Primary School		Proposed Elevations 2 of 2	
SCALE 1:150 @ A1 1:300 @ A3	DATE March 2010	DRAWN. arcwtb	DRAWING No. P7494A-P302 FILE REF.
			REVISION A