



Location Plan 1:2000 @ A1

- Key**
- 3.27Ha Existing Site Boundary
  - 2.04Ha Proposed Site Area
  - New Build (740m<sup>2</sup>)
  - Ⓐ Surplus land for Disposal
  - Ⓑ Junior School building adapted and extended to create a 2FE primary school with a Pre-School
  - Ⓒ Existing Community Swimming Pool Retained
  - Ⓓ New hall, kitchen, reception and staff Administration Block
  - Ⓔ New 2no classrooms & Group room
  - Ⓕ New Pre-School & group rooms
  - Ⓖ New Outdoor classrooms
  - Ⓗ New Pre-School play area
  - Ⓘ New vehicular access.
  - Ⓙ New Pedestrian Access and entrance



Floor Plan 1:250 @ A1



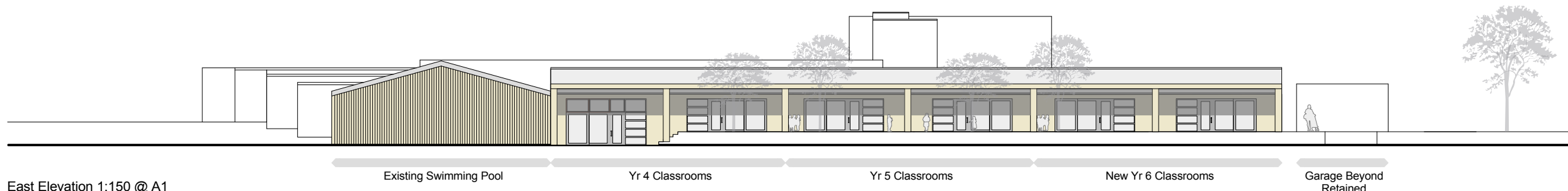
Birds Eye View of Entrance



Eye Level View of Entrance



West Elevation 1:150 @ A1



East Elevation 1:150 @ A1

Bancroft Primary School  
Project Appraisal  
P7494-PA001



Property, Business and Regulatory Services,  
Three Minsters House,  
76 High Street, Winchester SO23 8UL.  
tel: (01962) 847801