

Tweseldown Infant School Relocation and Expansion

Former Queen Elizabeth Barracks,
Fleet

Proposed External Lighting Proposals based on Iguzzini fittings.

Read in conjunction with Iguzzini lighting report
and specification - See Planning Appendices

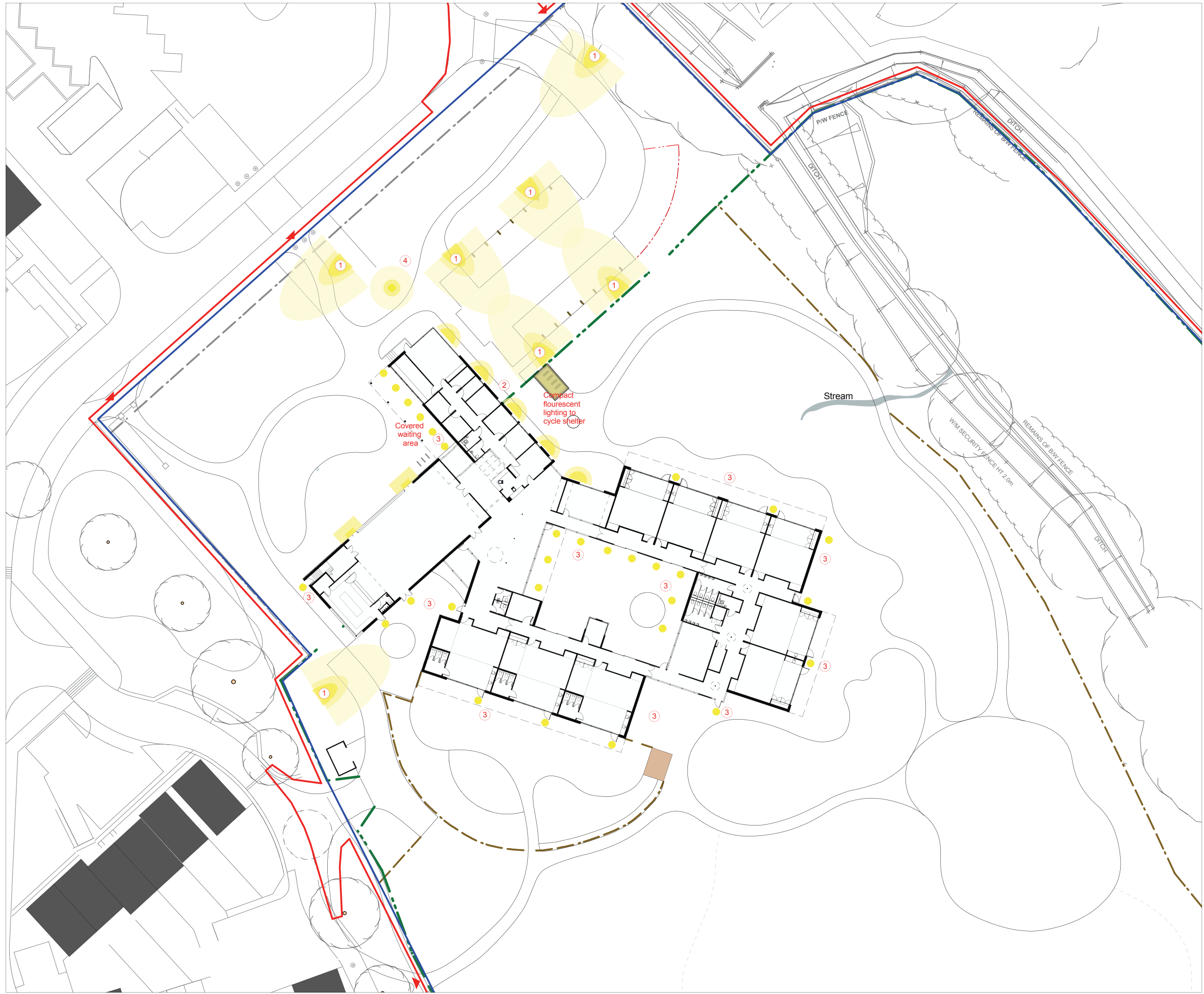
- 1 5m Column : Argo BF02 - street optic
- 2 Recessed wall fitting : Comfort B581
- 3 Compact fluorescent wall light : Full B548
- 4 LED Floor light : Woody BA43
- 5 Uplight : Professional B005

Light levels :

The light levels will be in accordance with
CIBSE guidelines. Car park and cycle storage
- 10 lux maintained average.

Walkways and perimeter zones - 20 lux
maintained average, 1.5m above ground
level.

External lighting to be controlled by photo cell
and time clock.



Planning Issue



North



1:250 @ A1 1:500 @ A3

P09618-A.031

March 2012