



Stoneycroft Rise;

Planting Schedule and Specification

Tree and Shrub Mix

Percentage	Name	Height	Form	Number
5	Acer campestre	60-90cm	b/r	
15	Corylus avellana	60-90	b/r	
25	Crataegus monogyna	60-90	b/r	
5	Cytisus scoparius	45-60	2ltr	
5	Lonicera periclymenum	60-90	b/r	
5	Malus sylvestris	60-90	b/r	
5	Salix caprea	60-90	b/r	
5	Sorbus aucuparia	60-90	b/r	
5	Viburnum opulus	60-90	b/r	
10	Ilex aquifolium	60-90	2ltr	
5	Quercus robur	60-90	b/r	
5	Ulex Europaeus	45-60	2ltr	
5	Castanea sativa	60-90	b/r	

Extra Heavy Standard Trees

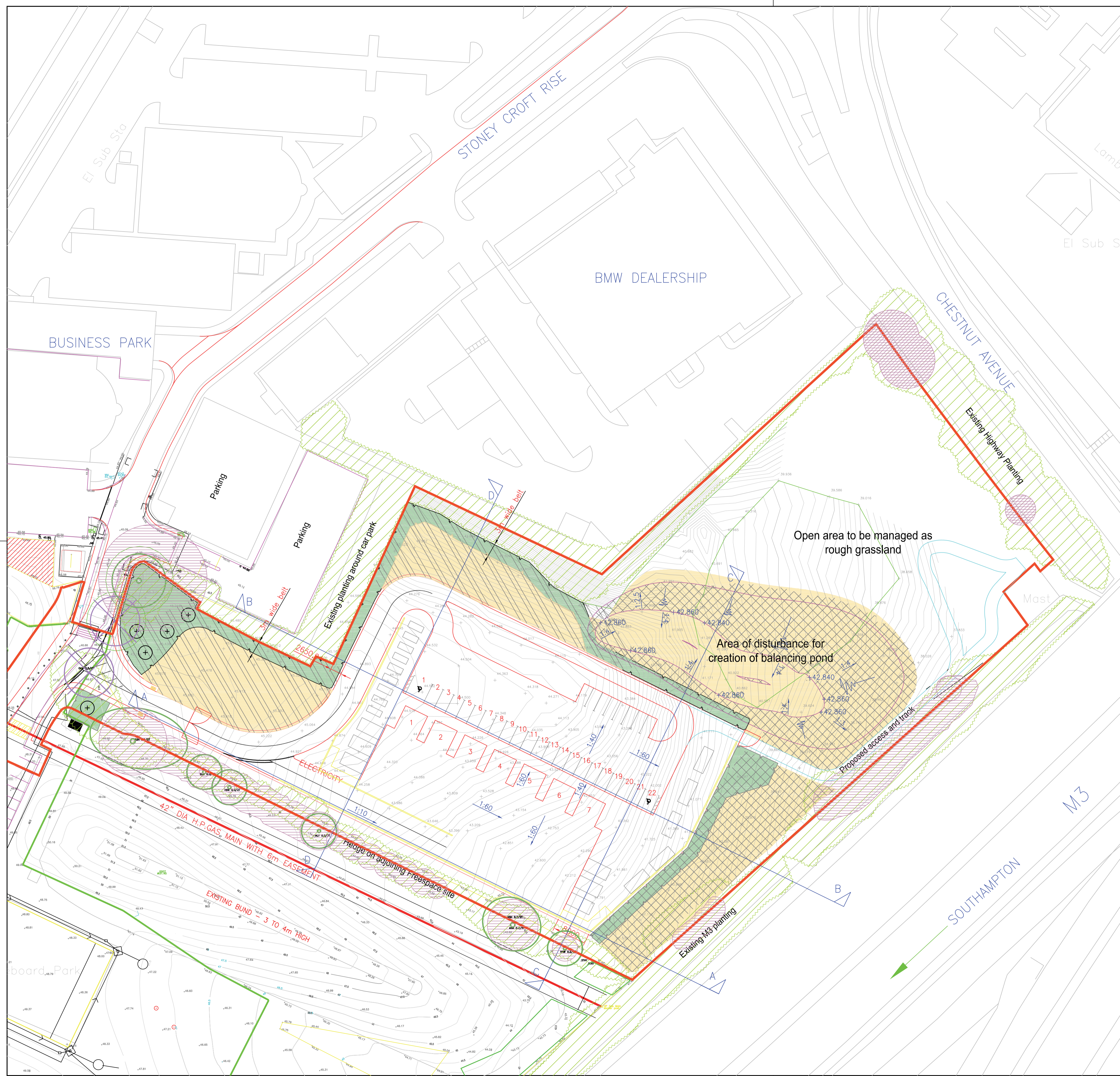
Name	Girth	Form	Number
Quercus robur	18-20 cm	r/b	5

Planting Specification

- All areas of topsoil to be planted are to be weed free, ground to be cleared of any grass or weeds present with a glyphosate based herbicide. Areas for small tree and hedge planting to be provided with a min 600mm depth of clean topsoil from the site.
- All plants to be grown, supplied and planted in accordance with sound horticultural practice and compliant with current British Standards.
- Planting of small trees and shrubs to be carried out at density of 6 plants/ sq m adding bonemeal fertiliser to planting pits at a rate of 30 gm per pit. All planting pits to be backfilled with clean, weed free topsoil from the site.
- Well composted small grade mulch, to be evenly spread following planting across all mass planted areas to a minimum depth of 75 mm.
- EHS trees to be planted in minimum 1m depth of clean good quality topsoil, each pit to be excavated to a capacity of 1m² and backfilled with excavated material following planting, 100gms bone meal to be well mixed with the topsoil. Trees to be supported with double stakes each 2.4 m in length, with 1m protruding above the ground. Trees to be securely tied with suitable rubber straps to both stakes.
- All areas of mass planting to be protected with 1.85m high stock/deer fencing consisting of 1.2m high x 31 x 19 gauge galvanised wire netting dug into the ground 150mm and buried in a shallow trench, with C8/80/15 woven wire above, on 2.7m long x 75 - 100mm round pressure treated stakes driven into the ground at 5m centres. Straining posts 2.7m long x 150mm complete with struts. Fencing to be tied into the HWRC security fence where appropriate and suitable access gates provided where necessary to facilitate maintenance of adjacent areas.
- All planting to be maintained for a period of 3 years under the landscape contract. Annual inspections for replacements to be made in September. Any plants lost or not making healthy growth to be replaced each year of the maintenance period during the dormant season.
- Watering to be carried out as necessary to sustain healthy growth and a top up of mulch carried out prior to handover to the Borough Council at the end of the contract maintenance period.
- Planting to be kept weed free with a glyphosate based herbicide applied a minimum of 3 times per annum. Only herbicide approved by HCC and the Borough Council will be permitted, to be applied only by suitably qualified operatives.
- Stakes, ties, deer and rabbit protection to be maintained throughout, any vandalism to be reported as soon as it is identified and instructions to repair damage agreed prior to remedial works being carried out.
- A formal site inspection and meeting with representatives from the County Council, Borough Council and the Contractor will be required to agree any outstanding remedial works at the end of the maintenance period prior to handing over the planting to the Borough Council.
- Following the maintenance period management and maintenance of the landscape will be carried out in accordance with the Ecological Impact Assessment and Maintenance Strategy.

Key:

- Site Boundary
- Existing established dense vegetation around site
- Proposed hedge/small tree planting
- Existing mature individual trees to be retained
- Existing mature individual trees to be removed
- Proposed EHS trees
- Area of mounding
- Area of possible mounding
- Rough grassland habitat to be established on disturbed ground in accordance with ecological mitigation strategy
- Existing tree root protection area 1 (RPA 1)
- Section line (see drawing CF5-103 Landscape Sections)



This plan contains extracts from the Ordnance Survey map with the permission of The Controller of Her Majesty's Stationary Office © Crown copyright. Unauthorised reproduction infringes Crown copyright and may lead to prosecution or civil proceedings (Licence LA077660).

Rev	Date	Description

FOR INFORMATION

EASTLEIGH BOROUGH COUNCIL

Paul Ramshaw
Head of Regeneration & Planning Policy

Regeneration & Planning Policy
Planning Policy & Design

Civic Offices
Leigh Road, Eastleigh
Hampshire, SO50 9YN
Telephone: (023) 8068 8000
Email: regeneration@eastleigh.gov.uk

Scheme
Proposed HWRC Site
Stoneycroft Rise, Chandler's Ford

Title
Landscape Proposals

Scale	Date	Drawn	Checked
@ A1 1:500	27/09/12	JD/AB	

Project Number	Drawing Number	Revision
S4CF05	S4CF05-102	-