

Hampshire Minerals and Waste Plan



Development Scheme

2011

Prepared in compliance with the Planning & Compulsory Act 2004 as amended

1	Introduction	2
	What is a Minerals & Waste Development Scheme?	2
	Why are we preparing the HMWP?	2
	Resources for plan preparation	3
	The area covered by the HMWP	3
	Why are we preparing joint minerals and waste documents?	3
2	Hampshire Minerals & Waste Development Plan	5
	What is the Minerals & Waste Plan?	5
	How does the Minerals & Waste Plan relate to other plans and strategies?	5
	What documents have been adopted?	6
	What are the key stages in document preparation?	7
	Hampshire Minerals & Waste Plan	8
	What has happened so far	8
	Hampshire Minerals & Waste Plan: Timetable	9
	Other documents being prepared	9
	Proposals Map	10
	Plan assessment and appraisal	10
	Potential risks to the timetables	10
3	Hampshire Minerals & Waste Plan - Evidence Base	11
	Preparing a robust evidence base	11
	Evidence base prepared so far	11
	Evidence base being prepared	11
4	Existing Minerals & Waste Planning Policy	13
	Current policies (Core Strategy)	13
	What are 'saved' policies?	14
	Other planning guidance	15

1 Introduction

What is a Minerals & Waste Development Scheme?

This Hampshire Minerals and Waste Development Scheme provides a timetable for the preparation of the Hampshire Minerals and Waste Plan (HMWP). The Scheme sets out what planning policy documents the Council is preparing with its partners, and the various stages that each will go through, including opportunities for public participation.

Under the Planning & Compulsory Purchase Act 2004 as amended, all local planning authorities must prepare a Local Development Scheme. Similarly, a Minerals and Waste Development Scheme is prepared by a Minerals and Waste Planning Authority (such as Hampshire County Council), and sets out the programme for preparing planning documents (known as Minerals & Waste Development Documents)⁽¹⁾.

This Development Scheme updates a revised Scheme which was submitted and approved by Government Office for the South East (GOSE) in 2009.

This Minerals and Waste Development Scheme (2011) came into effect on 7 September 2011 following approval by the Secretary of State

The Development Scheme will be reviewed and rolled forward on a regular basis to take account of progress and monitoring. The latest updates to it can always be viewed on our website (<http://www3.hants.gov.uk/mineralsandwaste.htm>) or by contacting us at <mailto:planning.policy@hants.gov.uk>.

Why are we preparing the HMWP?

It is important to keep plans up to date and make sure they are working to achieve our vision. As part of this we are preparing the Hampshire Minerals and Waste Plan (HMWP).

This new Plan will replace the adopted Minerals and Waste Core Strategy, and improve, update and strengthen its policies and provide details of strategic sites that we consider necessary to deliver the vision. This is important because an out of date Core Strategy allows us less control over getting the right developments for Hampshire and could lead to more planning applications going to appeal.

Previously, the County Council had intended to revise the Core Strategy adopted in 2007, and prepare separate Minerals Sites and Waste Sites plans. Now there will be one comprehensive document - **The HMWP**. It is important that the project plan for preparation of the HMWP is realistic, 'fit for purpose', and that the timescales are justified based on the County's circumstances (including its available resources). The timetables set out in this document therefore reflect:

- The available resources (see below).
- The need to build upon previous public participation (which started with the Material Resources Strategy project in March 2005).
- The implications of elections for public consultation events.
- The need to produce a robust and up-to-date evidence base.
- The requirement to undertake Sustainability Appraisal and Habitats Regulations Assessment
- New guidance and emerging best practice.
- The need to undergo democratic processes at the various plan preparation stages for each of the five authorities involved (see 'Why are we preparing joint minerals and waste documents?').

Resources for plan preparation

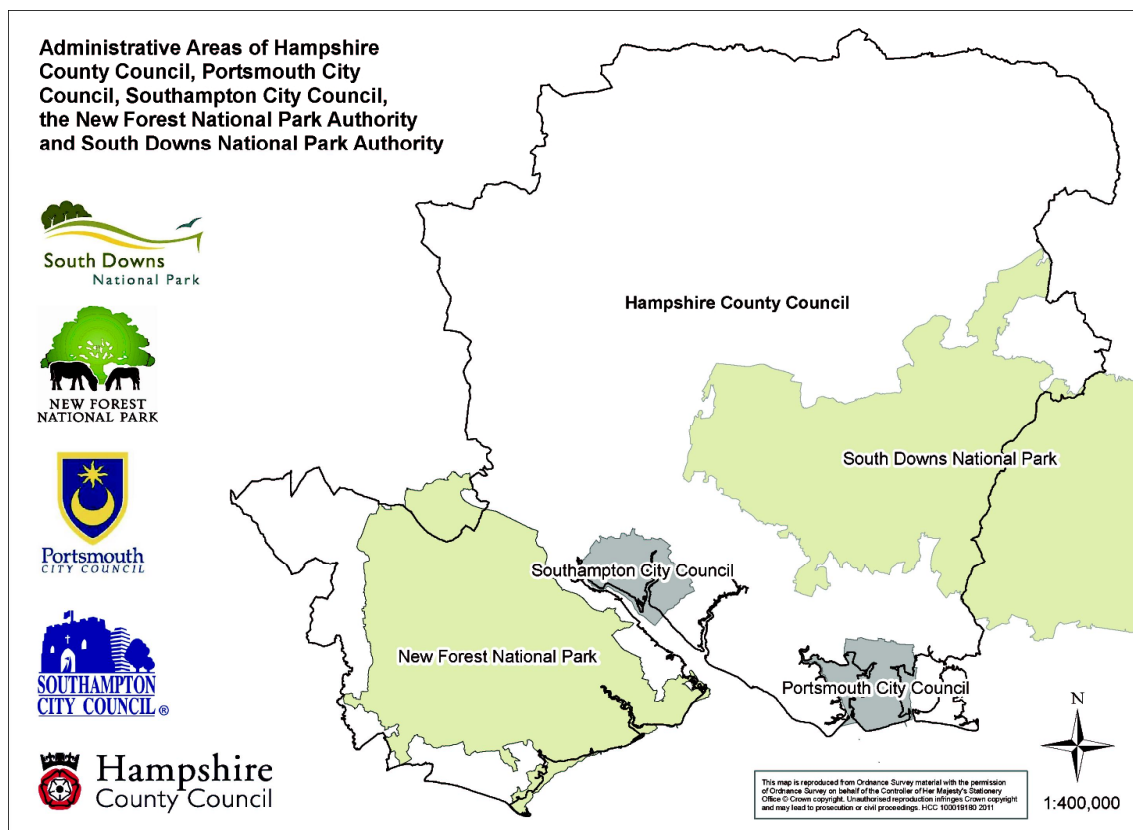
In order to prepare the Plan, Hampshire County Council will contribute planning, specialist and managerial staff resources sufficient to prepare a sound plan. Portsmouth City Council, Southampton City Council, the New Forest National Park Authority, and the South Downs National Park Authority will also provide support and contribute some staff time where required.

External consultants have been engaged where necessary, however the majority of the work is completed in-house.

The County Council has committed significant financial support to the preparation of the HMWP through the provision of professional staff, communications, and public engagement opportunities.

The area covered by the HMWP

Mineral and waste planning issues are most appropriately addressed jointly, so that strategic issues can be satisfactorily resolved. The Plan will cover the administrative areas of Hampshire, Portsmouth, and Southampton, together with the New Forest National Park and the South Downs National Park, all of which are minerals and waste planning authorities. There is a small area of the New Forest National Park which was formerly within the administrative planning area of Wiltshire County Council. This is now included within the Hampshire Mineral & Waste Plan area. The Plan only covers the part of the South Downs National Park that falls within the county boundary of Hampshire. The map below indicates the administrative areas of each partner authority.



Why are we preparing joint minerals and waste documents?

Minerals and waste planning authorities are allowed to work together to prepare minerals and waste development documents⁽²⁾, and the minerals and waste development plan document in this Scheme will be prepared, submitted and adopted by the five authorities as a joint document.

² Under section 28 of the Planning and Compulsory Purchase Act 2004,

Each of the Development Schemes prepared by the County, City Councils and National Park Authorities will include details of the preparation of the joint mineral and waste development document.⁽³⁾ In addition, each mineral and waste planning authority is required to prepare its own Statement of Community Involvement.

In order to facilitate the production of the joint minerals and waste development document the five mineral and waste planning authorities have formed a joint elected Member 'steering panel'. This comprises one representative Member from each authority. This acts as an advisory body on the preparation of the joint minerals and waste development document. It is envisaged that the panel will be entirely advisory and not a 'joint committee'. Each mineral and waste planning authority will 'adopt' the joint minerals and waste development document individually.

3 As required under Section 15 of the Planning and Compulsory Purchase Act 2004

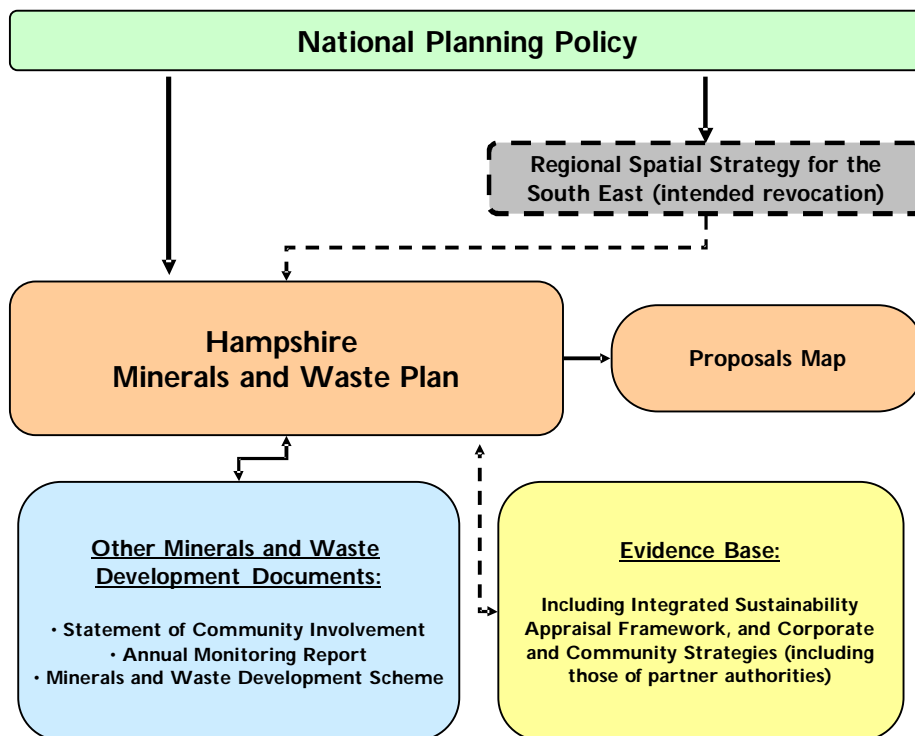
2 Hampshire Minerals & Waste Development Plan

What is the Minerals & Waste Plan?

The HMWP will be a development plan document (DPD), supported by other development documents such as the Statement of Community Involvement. The HMWP covers the period 2011-2030 and will replace the adopted Hampshire Minerals and Waste Core Strategy (2007). This is explained further in Section 4 of this document.

The DPD will undergo an independent examination conducted by a Planning Inspector. Other development documents do not undergo an examination.

The figure below shows the documents that make up the HMWP and the linkages to other strategies



How does the Minerals & Waste Plan relate to other plans and strategies?

National Planning Policy

The HMWP will be in accordance with national policy included Mineral Policy Statements (MPS). The governments intention to create a National Planning Policy Framework (NPPF) to replace current current policy, will be considered throughout the plan making process.

The Regional Plan

The south east region is covered by a spatial strategy called the 'South East Plan'. This is Regional Spatial Strategy (RSS) which was adopted by the Secretary of State on 6 May 2009.

There are relevant elements set out in the South East Plan, such as targets for diversion from landfill, and the sub-regional apportionments of land won sand and gravel which the HMWP addresses.

The Government has announced its intention to abolish the South East Plan through the Localism Bill. In the mean time the HMWP will be in general conformity with the RSS except where local issues justify departure.

What documents have been adopted?

Core Strategy

The Hampshire Minerals and Waste Core Strategy was adopted in 2007 and sets out the general approach to using resources (including minerals and waste) in the most effective and efficient way, and reducing as far as possible the amount of waste requiring final disposal. It replaced many of the policies from the Minerals and Waste Local Plan (1998) and County Structure Plan (1996-2001).

The Core Strategy contains policies and proposals for mineral extraction or processing and waste management up to the year 2020. The Core Strategy sets out a long-term spatial vision for minerals and waste planning in Hampshire and contains the primary policies and proposals to deliver that vision.

The Core Strategy was submitted to Government in May 2006 and underwent a Public Examination between January and March 2007. The Core Strategy was subsequently judged to be a 'sound' plan and each planning authority approved and adopted the Core Strategy on the following dates:

- New Forest National Park Authority - 28 June 2007
- Hampshire County Council - 12 July 2007
- Portsmouth City Council - 17 July 2007
- Southampton City Council - 18 July 2007

Following adoption, Associated British Ports (ABP) successfully applied to the High Court to have part of the Core Strategy 'quashed'. Subsequently in September 2008 an Order was made to quash policies S13, S14 and DC18 – Wharves and Rail Depots – and consequential references have been deleted⁽⁴⁾. An amended version of the adopted Core Strategy is now in place.

The HMWP will replace the adopted Core Strategy following public examination, if found to be sound, and the approval of each planning authority to adopt it.

Statement of Community Involvement

The Statement of Community Involvement (SCI) sets out the approach for involving the community in the preparation, alteration and continuing review of all minerals and waste development documents, and in publicising and dealing with planning applications. The SCI was adopted by the County Council in September 2006 after it was subject to an examination by an Inspector from the Planning Inspectorate.

4 For information on the adopted Core Strategy see <http://www3.hants.gov.uk/planning/mineralsandwaste/planning-policy/documents-2/core-strategy.htm>

Since the SCI was adopted the process for preparing planning policy documents has changed through new planning guidance and regulations. In order to take these changes into account, Hampshire County Council has produced an addendum to its SCI which was approved in 2010.⁽⁵⁾ This will ensure that Hampshire County Council works in accordance with the guidance and that further plan consultation is carried out correctly

The SCI can be viewed on our website: <http://www3.hants.gov.uk/sci-2.htm>

What are the key stages in document preparation?

All Development Plan Documents (DPDs) have to go through prescribed procedures and are subject to wide public consultation and ultimately, to an independent examination before they can be adopted. DPDs are examined to assess their 'soundness' (i.e. whether they are fit for purpose and have been prepared in accordance with national regulations).

Key stages in Development Plan Document preparation are:

- 1. Evidence collection, preparation and pre-publication participation**
 - a. Evidence gathering
 - b. Preparation of policy options
- 2. Publication and representations period**
- 3. Submission of DPD for examination**
- 4. Independent examination**
- 5. Inspectors report and adoption**

Hampshire Minerals & Waste Plan

The adopted Core Strategy (and remaining 'saved' site policies in the 1998 Local Plan) will be replaced by the emerging Hampshire Minerals and Waste Plan. This approach comes in light of policy changes and the intended revocation of the South East Plan. The new approach provides for the preparation of one comprehensive DPD (the Plan). This will incorporate the necessary policy review to strengthen the current core strategy policies in relation to climate change and sustainable development, resolve the outstanding issues following recent legal judgements, and revise policies relating to aggregate supply in particular.

The Hampshire Minerals and Waste Plan will be submitted to the Secretary of State in February 2012.

What has happened so far

Key Milestones passed	Date	Description
Cabinet and Council	October - November 2010	Formal decisions were made by Cabinet and Council on the proposed approach to the HMWP.
Stakeholder Engagement	December 2010	Provided information to key stakeholders to the new approach to the HMWP
Public participation on options and SA Interim report (under Regulation 25 ⁽⁶⁾).	February - March 2011 June - July 2011	This consultation and engagement allowed for comment on the approach to the HMWP. The consultation also discussed the options on geographical location of facilities/development related to minerals and waste

Hampshire Minerals & Waste Plan: Timetable

Minerals & Waste Plan: Key Milestones	Timescale	Description
HMWP drafting	Summer 2011	The results of the consultation will be processed and used to inform the HMWP. Any updates needed to our evidence base will be carried out and the Plan will be revised and written, taking into account the evidence and the results from the engagement.
Cabinet and Council + Partners	September - October 2011	The prepared plan will go to Cabinet and Council for agreement
Publication of the draft Plan for Statutory Consultation (under Regulation 27 ⁽⁷⁾).	November - December 2011	The prepared plan will be published for a 6 week consultation on its 'soundness'
Submission to Secretary of State	February 2012	The plan (and any comments received during the Statutory Consultation) will be submitted to the Secretary of State.
Public Examination	April 2012	Independent consideration of Plan by Planning Inspectorate representative followed by inspectors report.
Adoption by Hampshire County Council and Partners	July 2012	The Hampshire Minerals and Waste Plan adopted and replaces the Core Strategy and Local Plan (1998) as policy

Real time updates can be seen on our website at <http://www3.hants.gov.uk/development-scheme-3.htm>

Other documents being prepared

The County Council is concentrating resources on preparing the Plan. The need for further policy documents (such as Supplementary Planning Documents) may be identified as work progresses. These might include a document setting out more detailed guidance on locating and designing minerals and waste facilities on industrial estates in Hampshire. If these are required in the future, the County Council will identify them on the website and in subsequent versions of the Minerals & Waste Development Scheme.

Proposals Map

A Proposals Map forms part of the Hampshire, Portsmouth and Southampton Minerals and Waste Local Plan 1998. A replacement Proposals Map will be prepared simultaneously with the Plan. The Proposals Map illustrates geographically how the policies of the development plan documents are to be applied.

This new Proposals Map is not a 'static' and unchanging map; it will be amended and up-dated as required whenever new development plan documents with spatial allocation policies are produced.

Moreover, the minerals and waste matters on the Proposals Map should be included on Proposals Maps prepared by the other Hampshire local planning authorities.

Plan assessment and appraisal

The policies and proposals in the mineral and waste plan will be assessed to ensure that they contribute to the aims of sustainable development. The results of this assessment are set out in documents called Sustainability Appraisals (which incorporate assessment as required under the Strategic Environmental Assessment (SEA) Directive). To prepare these appraisals, a sustainability 'Scoping Report' has been adopted by the Council. This report describes the existing key environmental, social and economic issues for Hampshire and includes a set of sustainability objectives which will be used to assess the policies in documents. This report was prepared by independent consultants (Halcrow) in December 2004, and was used to form the basis of the appraisal of the adopted Core Strategy.

An updated sustainability 'Scoping Report' was prepared and consulted on by HCC, and will underpin the Plan. This built on a previous draft Scoping Report prepared for the then emerging Minerals Plan and Waste Plan in 2007.

All mineral and waste development documents are also subject to Habitats Regulations Assessment ⁽⁸⁾ and the HMWP will be assessed accordingly.

Potential risks to the timetables

The plan preparation process had a number of risk elements including:

- Staffing
- Funding, and
- Democratic timetables.

The County Council had a variety of procedures in place to mitigate these risks however, should there be a significant change in the Plan.

8 Under Schedule 1 to the Habitats Regulations (The Conservation (Natural Habitats, & C.) (Amendment) Regulations 2007).

3 Hampshire Minerals & Waste Plan - Evidence Base

Preparing a robust evidence base

Planning authorities are urged to ensure that effective programme management techniques are employed in progressing their DPD's and orchestrating the production of the evidence base. A number of studies should be completed prior to public participation on our minerals and waste planning documents, in order to ensure that all the key issues have been identified at an early stage.

It is also important that the evidence base is complete and robust prior to publication of the plans. This will help demonstrate that the proposed plans are the most appropriate considering all the options and based on the available evidence. The robustness of our evidence base will be reviewed annually and further studies produced or commissioned as appropriate.

Evidence base prepared so far

A number of studies have been published to date which will continue to inform preparation of the plans. These studies can be found on our consultation portal - <http://consult.hants.gov.uk/portal>.

Key studies include:

- Review of Minerals Supply and Demand Report for SEERA (2006) *British Geological Survey (BGS)*.
- A Review of Employment Land and Industrial Estates in Hampshire for the Suitability of Minerals and Waste Management Development (2007) *White Young Green*.
- Hampshire Minerals Plan Traffic Assessment Study Report (2008) *Mott Gifford and Hampshire County Council*.
- Strategic Flood Risk Assessment (2008) *Halcrow Group Ltd*.
- Study into Low Level Radioactive Waste in the South East (2009) *Scott Wilson*.
- Wharves and Depots Needs Assessment - Update (2010) *Land & Mineral Management Limited*
- Assessment of Sites and Areas for Waste Management Facilities in Hampshire (draft report) (2011) *Hampshire County Council*
- Assessment of Need for Waste Management Facilities in Hampshire - Waste Data Summary Report (draft) (2011) *Hampshire County Council*
- Sustainability Appraisal - Interim Report on Sites Policies (2011) *Hampshire County Council*
- The Suitability of Industrial Areas for Waste management Uses in Hampshire (2010) *Hampshire County Council*
- Minerals in Hampshire - Background Study (2011) *Hampshire County Council*
- Hampshire Mineral Proposal Suitability Study (2011) *Hampshire County Council*

Evidence base being prepared

Gathering of evidence is an ongoing process and must be continued throughout the plan preparation process. Some studies, such as Flood Risk Assessment, are 'living documents'. To inform the evidence base, the council makes use of a substantial amount of secondary data and collected data. Examples include data on:

- Municipal waste arisings, transfer, treatment and disposal.
- Other waste streams and movements.
- Capacity of waste operations.
- Site appraisals.
- Site operations (any noise or air quality issues)

- Minerals resources.
- Demand for minerals.
- Public opinion.

As the evidence base is prepared any completed or draft supporting documents will be available to view online at <http://consult.hants.gov.uk/portal/>.

4 Existing Minerals & Waste Planning Policy

Current policies (Core Strategy)

The following policies are included in the adopted Core Strategy (Revised September 2008):

Spatial Strategy Policies

- S1 - Sustainable Design, Construction and Demolition
- S2 - Waste growth and demand for natural resources
- S3 - Net Self-Sufficiency
- S4 - Recycling and Composting
- S5 - Capacity Requirements for Recycling, Composting and Recovery and Treatment
- S6 - Landfill
- S7 - Specialist Facilities
- S8 - Sand and Gravel
- S9 - Recycled and Secondary Aggregates
- S10 - Chalk
- S11 - Brick-making and Other Clay
- S12 - Oil and Gas
- S15 - Sterilisation of Mineral Deposits
- S16 - Location of Waste Management
- S17 - Co-location, Systems and Infrastructure
- S18 - Site Selection

Development Control Policies

- DC1 - Sustainable Minerals and Waste Development
- DC2 - Sites with International and National Designations
- DC3 - Impact on Landscape and Townscape
- DC4 - Historic Heritage
- DC5 - Green Belt
- DC6 - Highways
- DC7 - Biodiversity
- DC8 - Pollution, health, quality of life and amenity
- DC9 - Public Safety
- DC10 - Water Resources
- DC11 - Flooding
- DC12 - Restoration and Aftercare
- DC13 - Waste Management and Recycling (including Aggregate Recycling Facilities)
- DC14 - Landfill
- DC15 - Sand and Gravel
- DC16 - Chalk
- DC17 - Clay
- DC19 - Oil and Gas
- DC20 - Borrow Pits and Spoil Sites
- DC21 - Prior Extraction of Minerals
- DC22 - Additional Plant, Buildings and Minor Development
- DC23 - Local Development Orders

Quashed Policies

S13 - Wharves and Rail Depots

S14 - Safeguarding of Existing Development

DC18 - Wharves and Rail Depots

What are 'saved' policies?

The Hampshire's Minerals and Waste Local Plan (1998) policies were reviewed in 2007, and subsequently a number of policies have not been saved and no longer make up part of the Local Plan. Details of how policies in the adopted Core Strategy (see above) have superseded these unsaved policies can be found in Appendix 1 of the Core Strategy (as amended in September 2008).

The 'saved' Hampshire, Portsmouth and Southampton Minerals and Waste Local Plan 1998 policies (saved in June/ July 2007) are set out in the table below.

Table 4.1

Policy in Hampshire, Portsmouth and Southampton Minerals and Waste Local Plan	Current status
19 (preferred areas for sand and gravel extraction)	Saved, to be replaced by policy and proposals in the Hampshire Minerals and Waste Plan
21 (aggregates wharves and depots)	Saved, to be replaced by policy and proposals in the Hampshire Minerals and Waste Plan
38 (landfilling and landraising)	Saved, to be replaced by policy and proposals in the Hampshire Minerals and Waste Plan
43 (waste processing)	Saved, to be replaced by policy and proposals in the Hampshire Minerals and Waste Plan

The adopted Core Planning Strategy superseded most 'saved' minerals and waste policies which formed part of the *Hampshire County Structure Plan 1996-2011 (Review)*. Relevant superseded policies are:

- MW1-MW3
- MW5-MW9

Other planning guidance

Ringwood Forest Development Brief (2000)

This brief associated with paragraph 5.41 and Policy 19 of the Hampshire, Portsmouth and Southampton Minerals and Waste Local Plan (1998) will remain as supplementary planning guidance. It will be used in determining planning applications in the Ringwood Forest area of Hampshire.

Once Policy 19 is superseded by the Plan, this SPG will no longer be used as planning guidance. The Minerals and Waste Development Scheme will be kept under review and amended if it is decided that a supplementary planning document covering this area is required.

This document can be made available in large print, on audio media, in Braille or in some other languages.

For further information, please contact **Planning Policy** in the County Planning Group:

Telephone: 0845 603 5634 or 01962 845517

Email: planning.policy@hants.gov.uk

Write to:
Planning Policy
County Planning
Economy, Transport & Environment Department
Hampshire County Council
Floor 1, Elizabeth II Court West
Winchester
SO23 8UD

Internet: <http://www3.hants.gov.uk/mineralsandwaste.htm>

