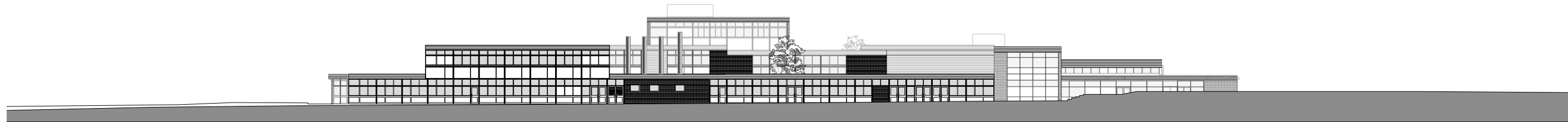
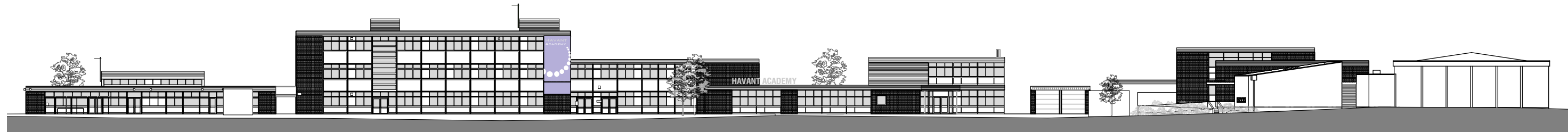




1 North Elevation



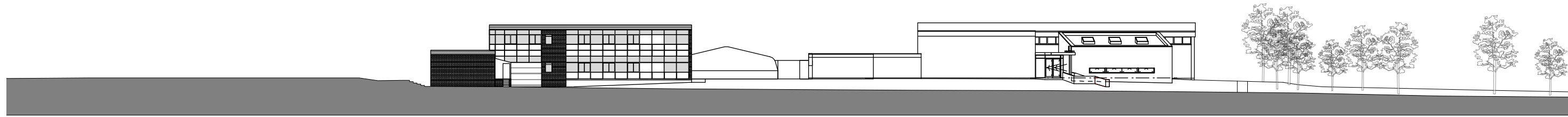
2 East Elevation



3 South Elevation



4 West Elevation



5 West Elevation (Community Block)

PLANNING



Property, Business and Regulatory Services,
Three Minsters House,
76 High Street, Winchester SO23 8UL.
tel: (01962) 847801

Notes	
1 This drawing is © copyright Hampshire County Council 2009. No unauthorised reproduction permitted. All rights reserved.	3 This map is reproduced from Ordnance Survey material with the permission of Ordnance Survey on behalf of the controller of Her Majesty's Stationery Office © Crown Copyright. Unauthorised reproduction infringes Crown Copyright and may lead to prosecution or civil proceedings. (100019180), (2009)
2 No dimensions are to be scaled from this drawing	

rev	description	date	by

PROJECT Havant Academy Wakeford Way, West Leigh			SHEET CONTENTS Site Elevations	
SCALE 1:500 @ A3	DATE Sept 2010	DRAWN. ARCTCH	DRAWING No. P9076-301	REVISION -
			FILE REF. P9076-301	