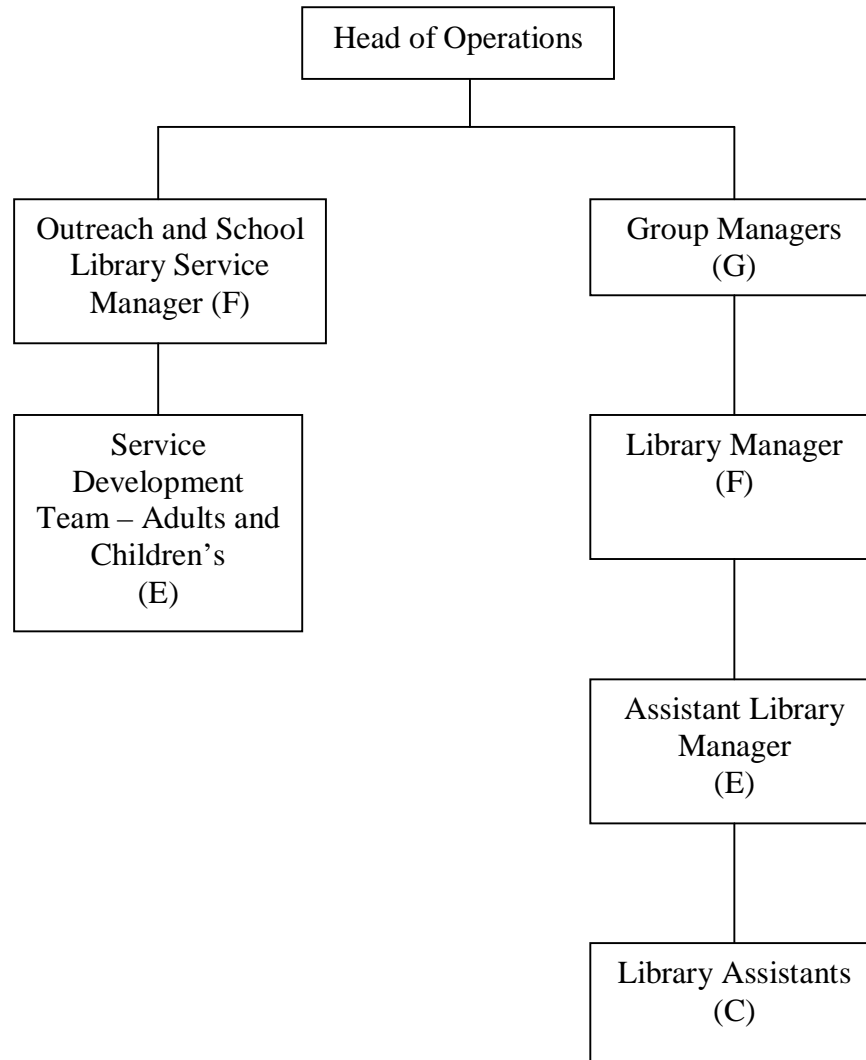


**LIBRARY SERVICE - PROPOSED STRUCTURE 2010** – excluding HQ and Discovery Centres



*16 FTE reduced to 11 FTE,  
inc. 3 Discovery Centre  
Managers*

*New roles, combining Supervisors,  
Assistant Supervisors and Library Officers.  
78 FTE posts reducing to 41.5 FTE posts.*

*Current vacant Library Assistant posts  
will be re-allocated to where they  
are most needed.*