

4. Eastleigh

4.1 About Eastleigh

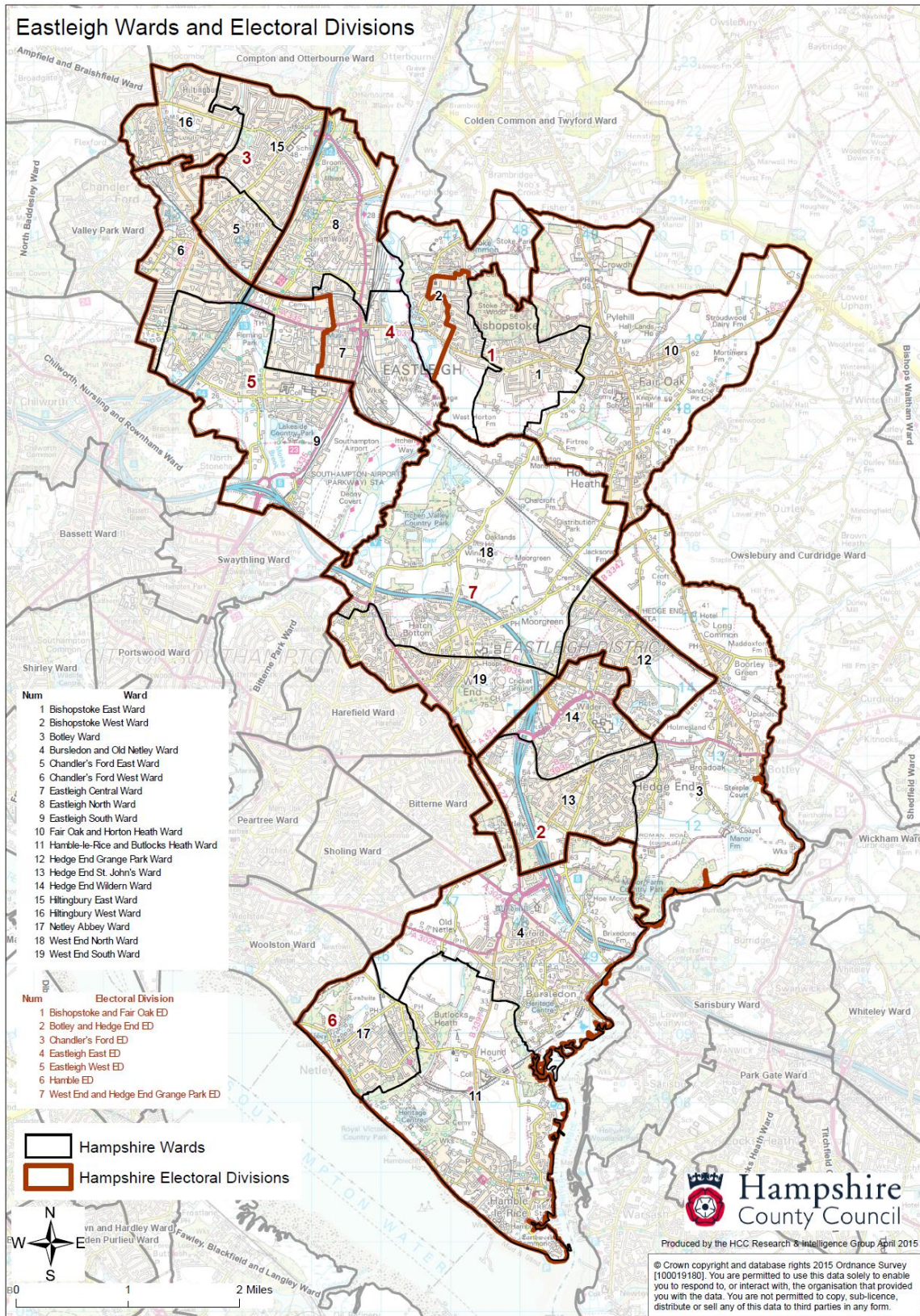
Eastleigh Borough is a primarily urban district curled around the north and east flanks of the city of Southampton, with which it shares many economic, social and cultural links. It has a long eastern boundary with Winchester district and the River Hamble, separating it from Fareham, while in the west Chandler's Ford merges into southern Test Valley. Eastleigh is home to Southampton Airport, the Ageas Bowl (home of Hampshire County Cricket Club), two motorways and some of the most important railway infrastructure in the south of England. Eastleigh also has many significant natural features such as the River Itchen and its associated SSSI, three Country Parks, the Hamble peninsula and numerous green gaps between main settlements.

The population of Eastleigh Borough in 2015 is around 128,000 people. The main settlements are the urban area of Eastleigh town (including Chandler's Ford), Bishopstoke/Fair Oak and Hedge End. Eastleigh has a strong history in transport industries, growing originally on the back of its critical position at the intersection of two railways, and the large railway works that grew up alongside. There are long-standing proposals for a major redevelopment of the railway works area. Parallel to the railway routes run two motorways that are critical to the wider Hampshire economy: the M3, running south from Winchester, and the M27, which runs southeast from west of Southampton towards Fareham and Portsmouth and serves Southampton Airport. The airport site, where the first Spitfire test flights took off, is located south of Eastleigh station and has its own Parkway station with journey times of 70 minutes to London. It serves the whole South Coast region and has connections to around 40 UK and European destinations.

Eastleigh's position between Southampton and Winchester has created strong north-south commuting flows and the town, which has seen considerable new housing development, is home to many people who work in those two cities. However, development around Hedge End and Botley, including a proposal for new significant housing around Boorley Green, is increasing the east-west movements from those areas.

While many residents look to Southampton for retail and leisure services, Eastleigh has a strong retail economy featuring two large centres: the Swan Centre in Eastleigh town and a large retail park near Hedge End. Hamble-le-Rice and Bursledon are well-known sailing centres and historic villages and there is significant leisure development around the Ageas Bowl at West End.

Map of Existing County Council Divisions in Eastleigh



4.2 County Council Divisions in Eastleigh

There are currently seven County Councillors from Eastleigh, each representing one division.

Existing divisions – registered and forecast electorate

Division name	Members	2014 Electorate	2014 Variance	2021 Electorate Forecast	2021 Variance
Bishopstoke & Fair Oak	1	13,468	+3.0%	15,168	+9.5%
Botley & Hedge End	1	14,540	+11.2%	15,614	+12.8%
Chandler's Ford	1	12,097	-7.5%	12,540	-9.4%
Eastleigh East	1	12,605	-3.6%	13,883	+0.3%
Eastleigh West	1	15,177	+16.0%	15,963	+15.3%
Hamble	1	14,475	+10.7%	15,488	+11.9%
West End & Hedge End Grange Park	1	14,521	+11.0%	16,312	+17.8%
Total	7	96,883		104,968	

There is forecast to be considerable development in parts of Eastleigh in the medium term, and the future electorate in five of the divisions is forecast to be above or close to the +10% variance threshold. One division is forecast to be well below the county average. With the average electorate per division in Eastleigh being 8.3% above the county average, there has been little room for manoeuvre in bringing all divisions within or close to the +10% threshold.

Reflecting these numerical pressures, two differing options have been proposed for Eastleigh, a seven-division model (**'Eastleigh 7'**) and an eight-division model (**'Eastleigh 8'**). Of the seven current County Councillors in Eastleigh, four County Councillors prefer the seven-division model and three County Councillors prefer the eight-division model. **Eastleigh 7** is a model for redrawing the boundaries of the existing seven county Council divisions to achieve greater equality within the tight +10% window. **Eastleigh 8** envisages there being eight divisions in Eastleigh and accordingly draws new boundaries, albeit as near as possible to existing arrangements. Both proposals are described below.

Because many of the divisions have the same name under both models, the Eastleigh divisions are described throughout as per this example:

- “Hamble” = current Hamble division
- “Hamble⁷” = Hamble division as proposed under **Eastleigh 7** model

- “Hamble⁸” = Hamble division as proposed under **Eastleigh 8** model

The proposals for both **Eastleigh 7** and **Eastleigh 8** were co-ordinated by Councillor Keith House, the Member for Hamble.

4.3 **Eastleigh 7 Proposal: Seven-division model**

The seven-division model proposes a realignment of division boundaries throughout the borough to achieve greater electoral equality, and several new division names to reflect the proposed boundaries. The Eastleigh 7 proposal preserves natural communities as far as possible, but envisages the splitting of some parishes, which is regrettable but necessary if relative equality is to be achieved.

In the north of the borough the main pressure comes from Chandler’s Ford, which needs to increase to achieve a higher degree of equality. This means that it is necessary to shift the boundaries of the northern Eastleigh divisions to the east. In the south the main pressure emanates from West End and Hedge End Grange Park, where the forecast electorate in 2021 is 17.8% above the County Council average. Name changes to the divisions of Bishopstoke & Fair Oak, Eastleigh East, Eastleigh West and West End & Hedge End Grange Park are proposed.

4.4 **Bishopstoke & Fair Oak**

2021 Electorate Forecast: 15,168 (+9.5% against forecast Hampshire average)

This division covers almost all of the area east of the River Itchen and north of the railway line, bordering Winchester district to the east. It is primarily made up of the villages of Bishopstoke, Fair Oak and Horton Heath, which while adjacent to each other are considered separate communities. The main road through Bishopstoke and Fair Oak is the north-south B3354, which is a busy route that acts as a local alternative to the M3. The division currently includes the following wards:

- Bishopstoke East
- Bishopstoke West
- Fair Oak & Horton Heath

Pressures from elsewhere in the borough particularly Chandler’s Ford, which needs to grow to achieve a higher degree of equality, means that it is necessary to shift the boundaries of the northern Eastleigh divisions to the

east. It is therefore proposed that the majority of Bishopstoke and Fair Oak be retained but that polling districts AB and AD be transferred to the proposed Eastleigh North and Bishopstoke West⁷ division.

Without some expansion to offset this, the Bishopstoke & Fair Oak Division will have a forecast electorate in 2021 that is well below the county average, increasing the pressure on other divisions. As the division is on the eastern edge of Eastleigh, it is not able to expand in this direction; nor can it expand south given that there is only open country between the existing division and the railway. It is therefore proposed to extend this division to encompass HP and HF polling districts from divisions to the southeast. This proposed extension follows the route of the B3354, which forms a natural link, and allows the remaining divisions in the borough to be brought within (or extremely close to) the +10% threshold.

To reflect these changes, it is proposed that this division be renamed Bishopstoke East, Fair Oak & Grange Park East⁷.

Proposal for Bishopstoke East, Fair Oak and Grange Park East⁷

- Move Bishopstoke West AB and AD to Eastleigh North & Bishopstoke West⁷ (-2,520)
- Add Botley HP and Hedge End Grange Park HF (3,110)

Proposed 2021 Electorate: 15,758 (+13.8% against forecast Hampshire average)

4.5 Botley & Hedge End

2021 Electorate Forecast: 15,614 (+12.8% against forecast Hampshire average)

This division covers the lower central part of the borough and encompasses the village of Botley, which is relatively small, and the town of Hedge End, which contains the majority of the division's voters. The division is crossed by several significant travel corridors: the M27 in the west, the east-west A334, the B3354 mentioned above, and the Eastleigh-Fareham railway line. The River Hamble and Winchester district form a hard eastern boundary. The division currently includes the following wards:

- Botley
- Hedge End St. John's
- Hedge End Wildern

This division is forecast to have an electorate slightly over the +10% variance threshold and it would be preferable to reduce it slightly. As described above, this can be achieved through the transfer of polling district Botley HP to another division. Otherwise this division retains a distinct identity and we propose to make no further changes.

Proposal for Botley & Hedge End⁷

- Move Botley HP to Bishopstoke East, Fair Oak & Grange Park East⁷ (-642)

Proposed 2021 Electorate: 14,972 (+8.1% against forecast Hampshire average)

4.6 **Chandler's Ford**

2021 Electorate Forecast: 12,540 (-9.4% against forecast Hampshire average)

This division forms the north-western tip of Eastleigh borough. Chandler's Ford has natural boundaries on all sides: it adjoins two other districts (Test Valley to the west and Winchester, with which it shares a Member of Parliament, to the north); the M3 runs down its eastern flank; and the Eastleigh-Romsey railway forms much of its southern boundary. The Chandler's Ford area is distinct from Eastleigh town, featuring its own shops and services and a different mix of housing. The division currently includes the following wards:

- Chandler's Ford (East)
- Hiltingbury East
- Hiltingbury West

This is the only division in Eastleigh that is forecast to have an electorate in 2021 that is below the county average – indeed it is very close to the -10% threshold. Given the pressure elsewhere in the borough, it is therefore necessary to expand this division. A simple solution is proposed whereby the two westernmost polling districts in the Chandler's Ford West ward are transferred into the Chandler's Ford⁷ division.

Proposal for Chandler's Ford⁷

- Add Chandler's Ford West CD and CE (+2,790)

Proposed 2021 Electorate: 15,330 (+10.7% against forecast Hampshire average)

4.7 **Eastleigh East**

2021 Electorate Forecast: 13,883 (+0.3% against forecast Hampshire average)

This division is really the north-eastern, rather than eastern, section of Eastleigh town. It covers Eastleigh town centre including the railway station and yards, the western edge of Bishopstoke and the northern part of Eastleigh town as far as the M3. It is a mix of residential, retail and commercial/industrial areas whose defining feature is the South West Main Line, which enters from the north and splits after Eastleigh station. The division currently includes the following wards:

- Bishopstoke West
- Eastleigh Central
- Eastleigh North

This division is forecast to have an electorate almost exactly on the 2021 Hampshire average, so no change would be necessary were it not for pressures arising elsewhere, notably in Chandlers Ford. As seen above, it is proposed that two further polling districts from Bishopstoke be transferred into this division, bringing all four Bishopstoke West polling districts into the same division. To offset this it is proposed that Eastleigh DE be transferred out into a new Eastleigh South⁷ division, leaving a more logical north/south split in the town's divisions and relieving pressure on other divisions. It also makes sense to use the Eastleigh-Fareham line as a southern boundary given the fact that there is no easy crossing-point. The revised electorate is close to the +10% variance threshold but as noted above this is to be expected given Eastleigh's high average forecast electorate.

To reflect these changes, it is proposed that this division be renamed Eastleigh North & Bishopstoke West⁷.

Proposal for Eastleigh North & Bishopstoke West⁷

- Add Bishopstoke West AB and AD (+2,520)
- Move Eastleigh DE to Eastleigh South⁷ (-1,198)

Proposed 2021 Electorate: 15,205 (+9.9% against forecast Hampshire average)

4.8 **Eastleigh West**

2021 Electorate Forecast: 15,963 (+15.3% against forecast Hampshire average)

This division is the south-western section of Eastleigh town and includes Southampton Airport, Lakeside Country Park, Fleming Park, the southernmost stretch of the M3 and residential areas to the west bordering Test Valley. The division currently includes the following wards:

- Chandler's Ford (West)
- Eastleigh Central
- Eastleigh South

Eastleigh West is forecast to have an electorate significantly above the 2021 Hampshire average, so it is necessary to reallocate some areas to other divisions. As seen above it is proposed that the two westernmost Chandler's Ford West wards be transferred to the Chandler's Ford⁷ division, which is a more logical community arrangement given that they are both in Chandler's Ford parish, and to offset this by adding Eastleigh DE from the current Eastleigh East Division. It is considered that the net result is a more sensible division covering the entirety of the southern section of Eastleigh's urban area.

To reflect these changes, it is proposed that this division be renamed Eastleigh South⁷.

Proposal for Eastleigh South⁷

- Transfer Chandler's Ford West CD and CE to Chandler's Ford⁷ division (-2,790)
- Add Eastleigh DE (+1,198)

Proposed 2021 Electorate: 14,371 (+3.8% against forecast Hampshire average)

4.9 **Hamble**

2021 Electorate Forecast: 15,488 (+11.9% against forecast Hampshire average)

This division covers the Hamble peninsula and has unbreachable boundaries on three sides: the River Hamble and Fareham district to the east, Southampton Water to the south and the city of Southampton to the west. Hamble division also has the M27 running through its northern

section. The division therefore has a natural geographically determined shape, although its current boundary includes an anomalous sliver (Bursledon BD polling district) extending northwest towards West End, which is actually part of West End parish and was included within Hamble to achieve electoral quality in a previous review. The division currently includes the following wards:

- Bursledon & Old Netley
- Hamble-le-Rice & Butlocks Heath
- Netley Abbey

Hamble is forecast to have an electorate above the 2021 Hampshire average, so it would be preferable to reallocate some areas to other divisions. This can be achieved by transferring the 'West End sliver' to a different division to the north, restoring the natural Hamble community boundary.

Proposal for Hamble⁷

- Transfer Bursledon Kanes Hill No. 4 (BD) to West End & Grange Park West⁷ (-649)

Proposed 2021 Electorate: 14,839 (+7.2% against forecast Hampshire average)

4.10 **West End & Hedge End Grange Park**

2021 Electorate Forecast: 16,312 (+17.8% against forecast Hampshire average)

This division includes a long stretch of the M27 to the north of which is a large area of open country in the centre of Eastleigh borough, including Itchen Valley Country Park, and to the south the settlements of Townhill Farm and West End, which merge into the built-up area of the city of Southampton. It also includes the Ageas Bowl and the part of Hedge End immediately south of the Eastleigh-Fareham railway. The division currently includes the following wards:

- Hedge End Grange Park
- West End North
- West End South

West End & Hedge End Grange Park is forecast to have an electorate very significantly above the 2021 Hampshire average so it is necessary to transfer some 2,500 voters to other divisions. As noted above it is proposed

that Hedge End Grange Park HF polling district be transferred to the new Bishopstoke East, Fair Oak & Grange Park East⁷ division.

As also seen above, it is proposed that a much smaller number of voters in Bursledon BD polling district (the 'West End sliver') be added to this division. While this does not look necessarily logical on a simple map, Bursledon BD is actually part of West End parish and shares the same community links with Bitterne ward in Southampton. This unifies all of West End parish in one division. In addition, the M27 is a hard boundary and it is considered it makes more sense to include these voters in the West End Division, which is on the same side of the motorway, than over the road to the east.

To reflect these changes it is proposed that this division be renamed West End & Grange Park West⁷.

Proposal for West End and Grange Park West⁷

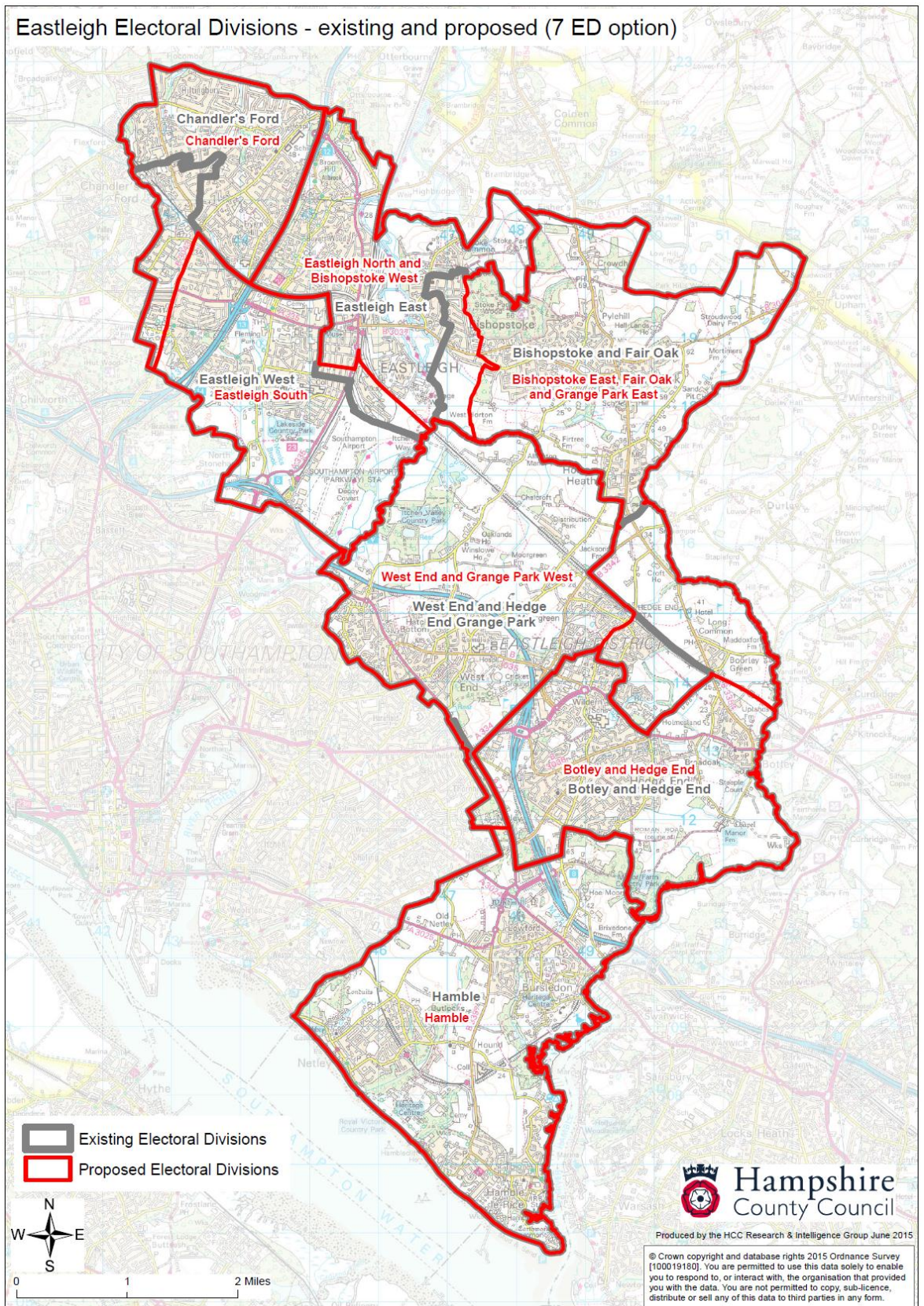
- Transfer Hedge End Grange Park (HF) to Bishopstoke East, Fair Oak & Grange Park East⁷ (-2,468)
- Add Bursledon Kanes Hill No. 4 (BD) (+649)

Proposed 2021 Electorate: 14,493 (+4.7% against forecast Hampshire average)

4.11 Proposals for Eastleigh – Eastleigh 7

Division name	Members	2021 Electorate (Existing Forecast)	2021 Variance (Existing Forecast)	2021 Electorate (Proposed)	2021 Variance (Proposed)
Bishopstoke East, Fair Oak and Grange Park East ⁷	1	15,168	+9.5%	15,758	+13.8 %
Botley and Hedge End ⁷	1	15,614	+12.8%	14,972	+8.1%
Chandler's Ford ⁷	1	12,540	-9.4%	15,330	+10.7%
Eastleigh North and Bishopstoke West ⁷	1	13,883	+0.3%	15,205	+9.9%
Eastleigh South ⁷	1	15,963	+15.3%	14,371	+3.8%
Hamble ⁷	1	15,488	+11.9%	14,839	+7.2%
West End and Grange Park West ⁷	1	16,312	+17.8%	14,493	+4.7%
Total	7	104,968		104,968	

Map of Proposed County Council Divisions in Eastleigh (7-division option)



4.12 **Eastleigh 8 Proposal: Eight-division model**

The Eastleigh 8 model effectively creates a new division in the centre of the borough around the town of Hedge End, where three other divisions currently converge. This recognises the existence of Hedge End as a natural community and its continued growth over the next few years. As a result, there is a shrinking of the boundaries of the three current southern divisions, allowing for West End to be consolidated into one division.

Under the Eastleigh 8 model the north of the borough does not experience the eastward pressure that is a feature of the Eastleigh 7 model. However, the opportunity has still been taken to consolidate Bishopstoke in one division and give Eastleigh town a north-south split.

In terms of forecast electorate size, the expansion to eight divisions means that most of the new divisions would be below the county average of 13,846 voters in 2021, with only Hamble⁸ and Eastleigh South⁸ above average. Under the Eastleigh 8 model, all divisions are within the +/- 10% threshold with the exception of the proposed West End⁸ division (-18.8%), which is explained below.

Because this model proposes eight divisions rather than the current seven, it is difficult to compare existing and proposed new boundaries in a meaningful way. The comparisons below assume that the 'extra' division is the proposed Hedge End⁸ division, which is created from parts of other divisions that extend into the Hedge End community. The other seven proposed divisions use the existing division boundaries as a starting-point. No increase in the total number of County Councillors is assumed and the electorate variance is calculated against the same average as the Eastleigh 7 model i.e. 13,846 voters per Councillor.

4.13 **Bishopstoke & Fair Oak⁸**

2021 Electorate Forecast: 15,168 (+9.5% against forecast Hampshire average)

Under the eight-division model the boundaries of the existing Bishopstoke & Fair Oak Division are shifted slightly to the west by transferring AI and AJ polling districts from Fair Oak to the proposed new Botley, Fair Oak South & Grange Park⁸ division, and adding AA and AC polling districts from the current Eastleigh East Division. This reunites all of Bishopstoke in one

division, reunifying a split borough ward, along with the northern polling district from Fair Oak parish. The resulting division has a forecast electorate in 2021 that is below average but well within the +/- 10% threshold.

No name change is proposed for this division under the eight-division model.

Proposal for Bishopstoke and Fair Oak⁸

- Use existing Bishopstoke & Fair Oak division as a starting-point
- Transfer polling districts Fair Oak & Horton Heath No. 2 (AI) and Fair Oak & Horton Heath No. 3 (AJ) to Botley, Fair Oak South & Grange Park⁸ (-4,526)
- Add Bishopstoke North West No. 1 (AA) and Bishopstoke North West No. 2 (AC) (+2,292)

Proposed 2021 Electorate: 12,934 (-6.6% against forecast Hampshire average)

4.14 **Botley, Fair Oak South & Grange Park⁸**

2021 Electorate Forecast: 15,614 (+12.8% against forecast Hampshire average)

Under the eight-division model this division consists of the AI and AJ polling districts from Bishopstoke & Fair Oak, the HN and HP polling districts from Botley & Hedge End, and the HF and HG polling districts from West End & Grange Park. This creates a division based on the eastern parts of the borough, linked by the B3354 Winchester Road corridor and major new development areas at Boorley Green and Horton Heath. The resulting division has a forecast electorate in 2021 that is below average but well within the +/-10% threshold.

Proposal for Botley, Fair Oak South & Grange Park⁸

- Use existing Botley & Hedge End division as a starting-point
- Add polling districts Fair Oak & Horton Heath No. 2 (AI) and Fair Oak & Horton Heath No. 3 (AJ) (+4,526)
- Add Hedge End Grange Park East (HF) and Hedge End Grange Park West (HG) (+5,722)
- Transfer the following polling districts to the proposed Hedge End⁸ division: HA, HB, HC, HD, HE, HO (-12,827)

Proposed 2021 Electorate: 13,035 (-5.9% against forecast Hampshire average)

4.15 **Chandler's Ford⁸**

2021 Electorate Forecast: 12,540 (-9.4% against forecast Hampshire average)

Under the eight-division model this division remains the same as it is now, which has the benefit of continuity of representation and community identity. The division has a forecast electorate in 2021 that is below average but just within the +/-10% threshold.

Proposal for Chandler's Ford⁸

- Retain whole of current division

Proposed 2021 Electorate: 12,540 (-9.4% against forecast Hampshire average)

4.16 **Eastleigh North⁸**

2021 Electorate Forecast: 13,883 (+0.3% against forecast Hampshire average)

As with the seven-division model, under the eight-division model the divisions for Eastleigh town are arranged more on a north-south than an east-west basis. The proposed Eastleigh North⁸ division consists of the existing Eastleigh East Division save the exclusion of two polling districts in Bishopstoke parish (as seen above) and the addition of DA polling district from the current Eastleigh West Division. This contains all of Eastleigh town in two divisions and repatriates two Bishopstoke parish polling districts to join the remainder of Bishopstoke. The division has a forecast electorate in 2021 that is below average but within the +/-10% threshold.

Proposal for Eastleigh North⁸

- Use existing Eastleigh East division as a starting-point
- Transfer Bishopstoke North West No. 1 (AA) and Bishopstoke North West No. 2 (AC) to Bishopstoke & Fair Oak⁸ (-2,292)
- Add Eastleigh Central No. 1 (DA) (+1,225)

Proposed 2021 Electorate: 12,816 (-7.4% against forecast Hampshire average)

4.17 Eastleigh South⁸

2021 Electorate Forecast: 15,963 (+15.3% against forecast Hampshire average)

Under the eight-division model this division consists of the existing Eastleigh West Division save the transfer of DA polling district to the proposed Eastleigh North⁸ Division. The proposed Eastleigh South⁸ Division has a forecast electorate in 2021 that is above average but within the +/-10% threshold.

Proposal for Eastleigh South⁸

- Use existing Eastleigh West division as a starting-point
- Transfer Eastleigh Central No. 1 (DA) to Eastleigh North⁸ (-1,225)

Proposed 2021 Electorate: 14,738 (+6.4% against forecast Hampshire average)

4.18 Hamble⁸

2021 Electorate Forecast: 15,488 (+11.9% against forecast Hampshire average)

Under the eight-division model this division consists of the existing Hamble Division save for the exclusion of BD polling district (the 'West End sliver' described above) and BA polling district north of the M27. This retains the three southern parishes within one division save for a small portion of Bursledon parish, with the motorway forming an appropriate northern boundary. The proposed Hamble⁸ Division has a forecast electorate in 2021 that is very close to the Hampshire average.

Proposal for Hamble⁸

- Use existing Hamble division as a starting-point
- Transfer Bursledon Kanes Hill No. 4 (BD) to West End⁸ (-649)
- Transfer the part of Bursledon No. 1 (BA) north of the M27 to Hedge End⁸ (-591)

Proposed 2021 Electorate: 14,248 (+2.9% against forecast Hampshire average)

4.19 Hedge End⁸

2021 Electorate Forecast: N/A ('extra' division)

Under the Eastleigh 8 model this division consists of the western half of the existing Botley & Hedge End Division (Hedge End Grange Park Ward) and the part of BA polling district north of the M27 from the current Hamble Division. This allows for the urban area of Hedge End outside of Grange Park to be one division. The addition of part of BA polling district would have the benefit of assisting Eastleigh Borough Council in its review of polling districts, uniting a new development area and allowing more local voting in this area. The proposed Hedge End⁸ Division has a forecast electorate in 2021 that is slightly below the Hampshire average of 13,846 voters per Councillor.

Proposal for Hedge End⁸

- 'Extra' division based around Hedge End community
- Include the following polling districts from the current Botley & Hedge End Division: HA, HB, HC, HD, HE, HO (+12,827)
- Include the part of Bursledon No. 1 (BA) north of the M27 (+591)

Proposed 2021 Electorate: 13,418 (-3.1% against forecast Hampshire average)

4.20 West End⁸

2021 Electorate Forecast: 16,312 (+17.8% against forecast Hampshire average)

Under the Eastleigh 8 model this division consists of the part of the existing West End and Grange Park Division that is West End parish, with the exclusion of Hedge End Grange Park Ward and the addition of BD polling district from Hamble Division. This allows for West End parish to be one complete division. The proposed West End⁸ Division has a forecast electorate in 2021 that is well below the Hampshire average, but it is locally expected that further development not currently reflected in our forecasts will come forward in the medium term.

Proposal for West End⁸

- Use existing West End & Hedge End Grange Park Division as a starting-point

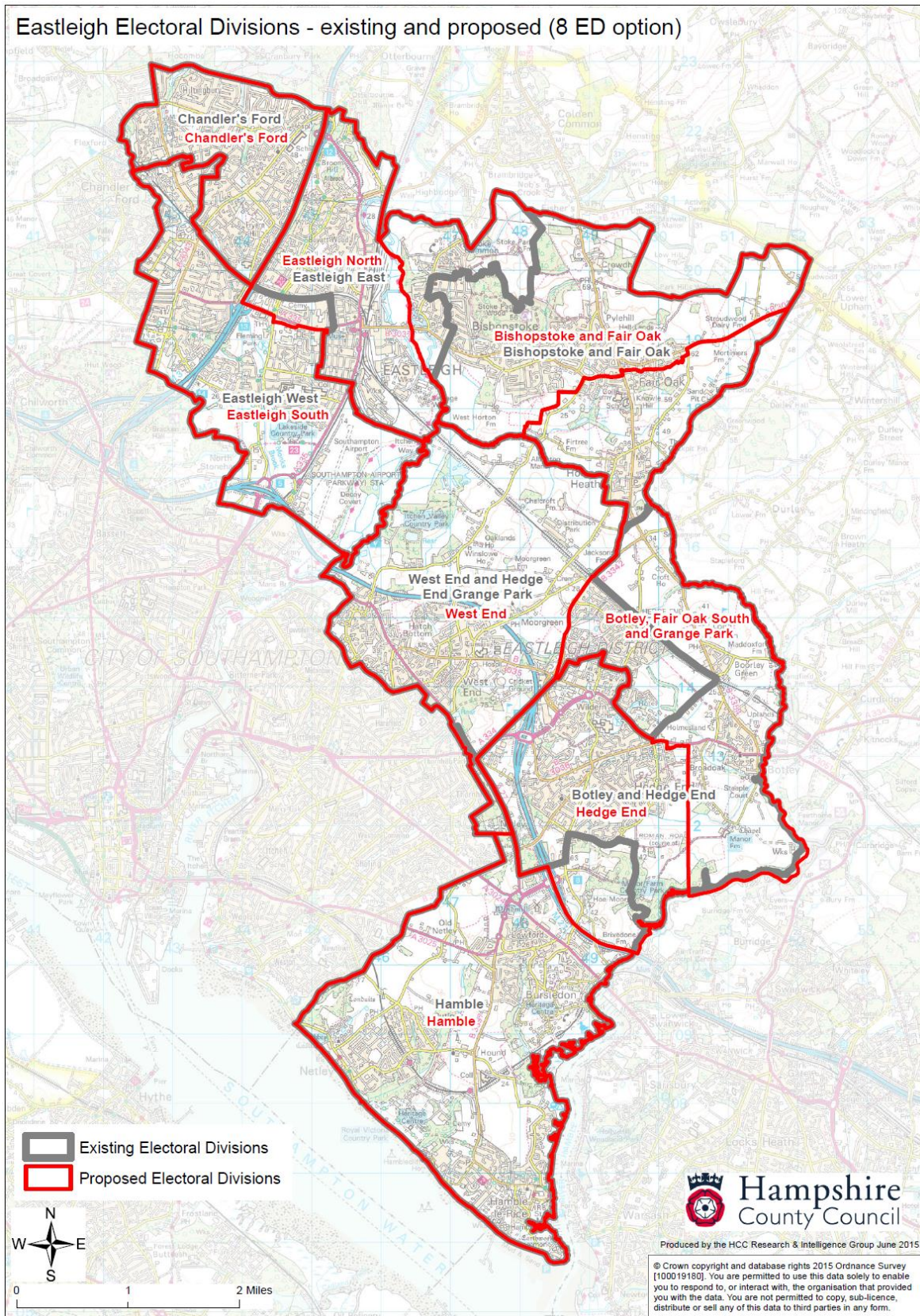
- Transfer Hedge End Grange Park East (HF) and Hedge End Grange Park West (HG) to Botley, Fair Oak South & Grange Park⁸ (-5,722)
- Add Bursledon Kanes Hill No. 4 (BD) (+649)

Proposed 2021 Electorate: 11,239 (-18.8% against forecast Hampshire average)

4.21 **Proposals for Eastleigh – Eastleigh 8**

Division name	Members	2021 Electorate (Existing Forecast)	2021 Variance (Existing Forecast)	2021 Electorate (Proposed)	2021 Variance (Proposed)
Bishopstoke & Fair Oak ⁸	1	15,168	+9.5%	12,934	-6.6%
Botley, Fair Oak South & Grange Park ⁸	1	15,614	+12.8%	13,035	-5.9%
Chandler's Ford ⁸	1	12,540	-9.4%	12,540	-9.4%
Eastleigh North ⁸	1	13,883	+0.3%	12,816	-7.4%
Eastleigh South ⁸	1	15,963	+15.3%	14,738	+6.4%
Hamble ⁸	1	15,488	+11.9%	14,248	+2.9%
Hedge End ⁸	1	N/A	N/A	13,418	-3.1%
West End ⁸	1	16,312	+17.8%	11,239	-18.8%
Total	8	104,968		104,968	

Map of Proposed County Council Divisions in Eastleigh (8-division option)



4.22 **Commentary on Proposals for Eastleigh**

As indicated at Paragraph 4.2 of this submission, there is not a universally favoured option for Eastleigh.

It is understood that the reason for the Eight-division proposal is that if the distribution of County Councillors across Districts were to be proportional to each District's share of registered electors in 2021 in numerical terms, Eastleigh would have 7.6 County Councillors, that is 8 when rounded up rather than the current 7, and that an eight-division model would therefore better satisfy the first of the three strategy criteria the Commission is required to have regard to in exercise of its judgement on Electoral Division Patterns. It is however recognised that any proposal of the County Council should have regard to all three statutory criteria and it is therefore considered, in light of the Commission's guidance, that it would be inappropriate to put forward any submission in respect of individual Electoral Division Patterns on numerical data alone.

The County Council is also mindful of the Commission's 'minded to' recommendation that the County Council should remain at 78 County Councillors, and the County Council has based its submission on proposed Electoral Division Patterns across the Districts of the County Council overall having regard to the three statutory criteria, working within a Council size of 78 Members. Having regard to the three statutory criteria, the view is that a seven-division model in Eastleigh is the best fit in the allocation of County Councillors overall, and is consistent with the Commission's decision on Council Size.